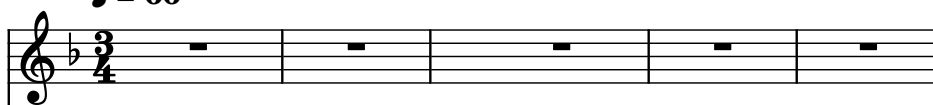


♩ = 66

Oboe, Soprano



Violins, Violin I



Violins, Violin II



Viola, Viola



Violoncello, Cello



Contrabass, Double Bass



Organ, Organ Treble



Organ, Organ Bass



Bassoon, Bassoon



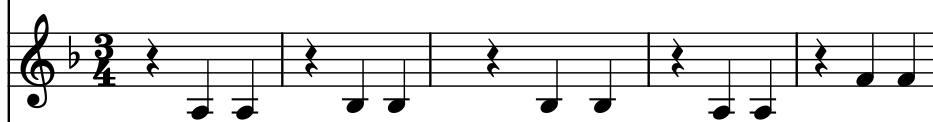
B♭ Bass Clarinet, Basso Continuo



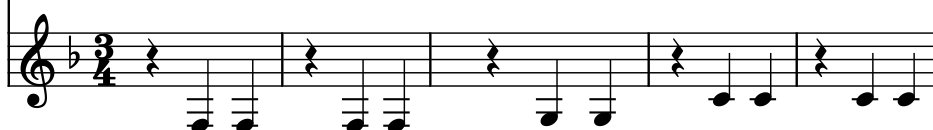
Violin, Violin I



Violin, Violin II



Pardessus de viole, Violin III



6

Ob.

Vlns.

Vlns.

Vla.

Vc.

Cb.

Org.

Org.

Bsn.

B \flat B. Cl.

Vln.

Vln.

Pds. v.

13 $\text{♩} = 68$ $\text{♩} = 70$

Ob.

Vlns.

Vlns.

Vla.

Vc.

Cb.

Org.

Org.

Bsn.

B \flat B. Cl.

Vln.

Vln.

Pds. v.

22

Ob.

Vlns.

Vlns.

Vla.

Vc.

Cb.

Org.

Org.

Bsn.

Bb B. Cl.

Vln.

Vln.

Pds. v.

Detailed description: This page contains measures 22 through 29 of a musical score. The instruments are arranged in the following order from top to bottom: Oboe (Ob.), Violins (Vlns.), Viola (Vla.), Violoncello (Vc.), Contrabass (Cb.), Organ (Org.), Bassoon (Bsn.), B-flat Bass Clarinet (Bb B. Cl.), Violins (Vln.), and Piano/Double Bass (Pds. v.). The key signature has one flat (B-flat). The Oboe part is mostly rests. The Violins and Viola play a rhythmic pattern of eighth and sixteenth notes. The Violoncello and Contrabass play a similar pattern, often in octaves. The Organ has a more complex part with some sustained chords and moving lines. The Bassoon and B-flat Bass Clarinet play a steady eighth-note pattern. The Piano/Double Bass part is not fully visible in the image.

30 $\text{♩} = 72$ $\text{♩} = 68$

Ob.

Vlns.

Vlns.

Vla.

Vc.

Cb.

Org.

Org.

Bsn.

B \flat B. Cl.

Vln.

Vln.

Pds. v.

38 $\text{♩} = 70$ $\text{♩} = 72$

Ob.

Vlns.

Vlns.

Vla.

Vc.

Cb.

Org.

Org.

Bsn.

B \flat B. Cl.

Vln.

Vln.

Pds. v.

47

Ob.

Vlns.

Vlns.

Vla.

Vc.

Cb.

Org.

Org.

Bsn.

Bb B. Cl.

Vln.

Vln.

Pds. v.

Detailed description: This page contains measures 47 through 50 of a musical score. The score is written for a large ensemble. The instruments and their parts are as follows: Oboe (Ob.) in treble clef, measures 47-50; Violins (Vlns.) in treble clef, measures 47-50; Viola (Vla.) in alto clef, measures 47-50; Violoncello (Vc.) in bass clef, measures 47-50; Contrabass (Cb.) in bass clef, measures 47-50; Organ (Org.) in bass clef, measures 47-50; Organ (Org.) in bass clef, measures 47-50; Bassoon (Bsn.) in bass clef, measures 47-50; Bb B. Clarinet (Bb B. Cl.) in treble clef, measures 47-50; Violins (Vln.) in treble clef, measures 47-50; Viola (Vln.) in treble clef, measures 47-50; and Piano/Double Bass (Pds. v.) in treble clef, measures 47-50. The key signature is one flat (Bb). The time signature is not explicitly shown but appears to be 4/4 based on the notation. The score includes various musical notations such as notes, rests, and accidentals.

55

Ob.

Vlns.

Vlns.

Vla.

Vc.

Cb.

Org.

Org.

Bsn.

Bb B. Cl.

Vln.

Vln.

Pds. v.

Detailed description: This is a page of a musical score, page 55. It contains 13 staves of music. The instruments are: Oboe (Ob.), Violins (Vlns.), Viola (Vla.), Violoncello (Vc.), Contrabass (Cb.), Organ (Org.), Bassoon (Bsn.), B-flat Bass Clarinet (Bb B. Cl.), Violin (Vln.), and Piano/Double Bass (Pds. v.). The music is written in a key with one flat (B-flat) and a common time signature. The notation includes various note values, rests, and articulation marks. The organ part is split between two staves. The piano part is written in a grand staff format.

$\text{♩} = 72$
 $\text{♩} = 70$

64

Ob.

Vlns.

Vlns.

Vla.

Vc.

Cb.

Org.

Org.

Bsn.

Bb B. Cl.

Vln.

Vln.

Pds. v.

Detailed description: This page of a musical score contains measures 64 through 72. The key signature has one flat (Bb). The tempo markings at the top indicate a quarter note equals 72 beats per minute for measures 64-68 and 70-72, and 70 beats per minute for measure 69. The instruments and their parts are: Oboe (Ob.) with a melodic line; Violins (Vlns.) with a rhythmic accompaniment of eighth notes; Viola (Vla.) with a similar rhythmic accompaniment; Violoncello (Vc.) and Contrabass (Cb.) with a bass line of eighth notes; Organ (Org.) with block chords in the right hand and eighth notes in the left hand; Bassoon (Bsn.) with a low bass line; Bb B. Clarinet (Bb B. Cl.) with a melodic line; and Piano (Pds. v.) with a complex accompaniment of eighth and sixteenth notes.

73

$\text{♩} = 70$

$\text{♩} = 68$

$\text{♩} = 72$

Ob.

Vlns.

Vlns.

Vla.

Vc.

Cb.

Org.

Org.

Bsn.

B \flat B. Cl.

Vln.

Vln.

Pds. v.

80 $\text{♩} = 70$ $\text{♩} = 72$ $\text{♩} = 55$

Ob.

Vlns.

Vlns.

Vla.

Vc.

Cb.

Org.

Org.

Bsn.

B \flat B. Cl.

Vln.

Vln.

Pds. v.

Detailed description of the musical score: The score is for page 11, measures 80 to 84. The key signature is one flat (B-flat). The tempo markings are 70, 72, and 55. The instruments and their parts are: Oboe (Ob.) with whole rests; Violins (Vlns.) with eighth notes and a triplet of sixteenth notes in measure 84; Viola (Vla.) with eighth notes and a triplet of sixteenth notes in measure 84; Violoncello (Vc.) with eighth notes and a triplet of sixteenth notes in measure 84; Contrabass (Cb.) with eighth notes and a triplet of sixteenth notes in measure 84; Organ (Org.) with whole rests; Bassoon (Bsn.) with eighth notes and a triplet of sixteenth notes in measure 84; B-flat Clarinet (B \flat B. Cl.) with eighth notes and a triplet of sixteenth notes in measure 84; and Piano (Pds. v.) with eighth notes and a triplet of sixteenth notes in measure 84.