

$\text{♩} = 129$

8

16

24

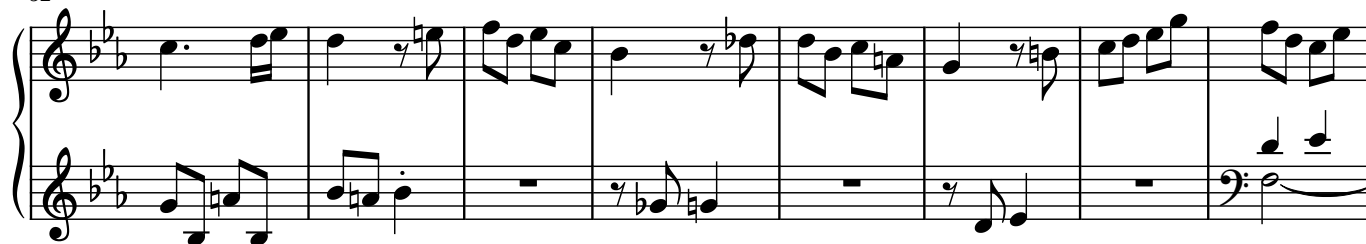
32

39

45



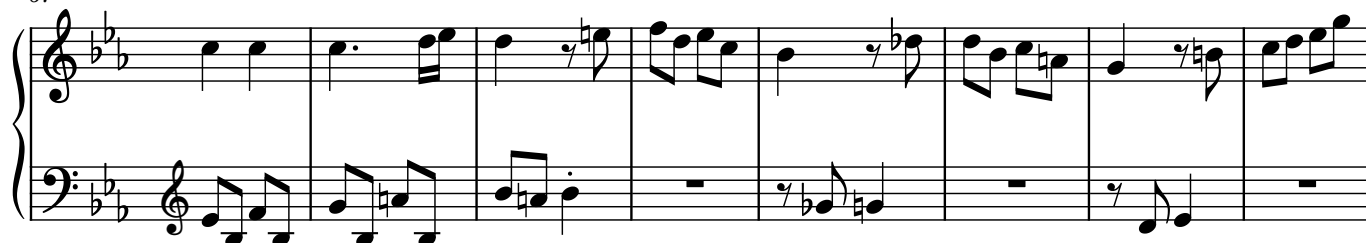
52



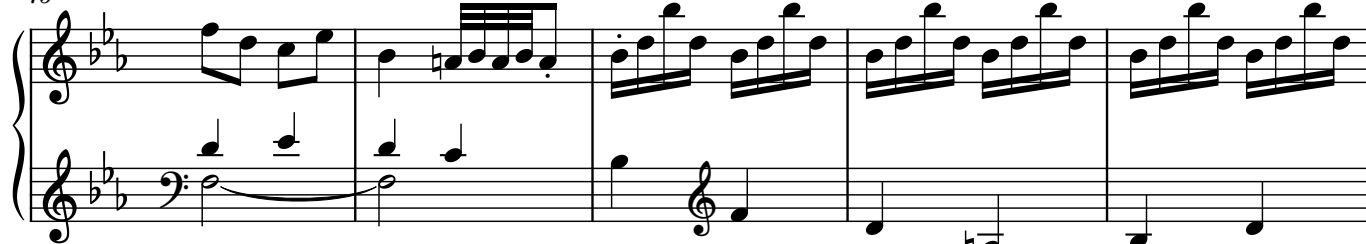
60



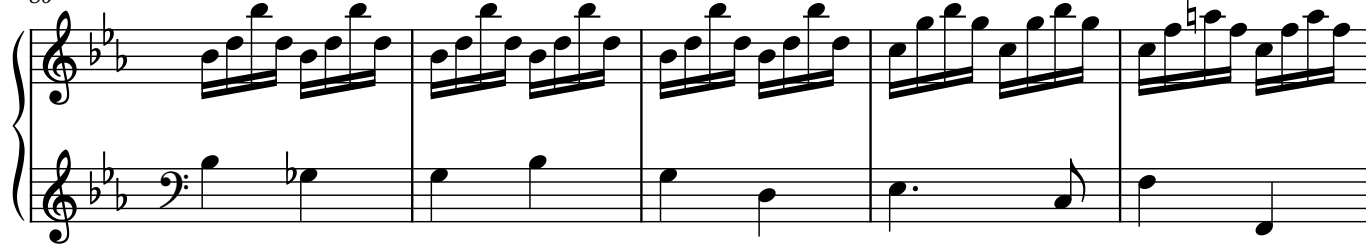
67



75



80



85

System 1 (Measures 85-88): Treble clef features a continuous eighth-note arpeggiated pattern. Bass clef features a simple eighth-note accompaniment.

89

System 2 (Measures 89-93): Treble clef continues the arpeggiated pattern. Bass clef continues the eighth-note accompaniment.

94

System 3 (Measures 94-99): Treble clef has a more complex eighth-note pattern. Bass clef has a more active eighth-note accompaniment.

101

System 4 (Measures 101-108): Treble clef has a pattern of eighth notes and rests. Bass clef has a pattern of eighth notes and rests.

109

System 5 (Measures 109-116): Treble clef has a pattern of eighth notes and rests. Bass clef has a pattern of eighth notes and rests.

117

System 6 (Measures 117-124): Treble clef has a pattern of eighth notes and rests. Bass clef has a pattern of eighth notes and rests.

124

Measures 124-132. Treble clef, bass clef, key signature of two flats. The melody in the treble clef features eighth and quarter notes with some rests. The bass line consists of eighth and quarter notes.

133

Measures 133-139. Treble clef, bass clef, key signature of two flats. The melody in the treble clef includes some beamed sixteenth notes. The bass line continues with eighth and quarter notes.

140

Measures 140-145. Treble clef, bass clef, key signature of two flats. The melody in the treble clef features chords and eighth notes. The bass line has some rests and eighth notes.

146

Measures 146-152. Treble clef, bass clef, key signature of two flats. The melody in the treble clef includes chords and eighth notes. The bass line has some rests and eighth notes.

153

Measures 153-159. Treble clef, bass clef, key signature of two flats. The melody in the treble clef includes chords and eighth notes. The bass line has some rests and eighth notes.

160

Measures 160-167. Treble clef, bass clef, key signature of two flats. The melody in the treble clef includes chords and eighth notes. The bass line has some rests and eighth notes.

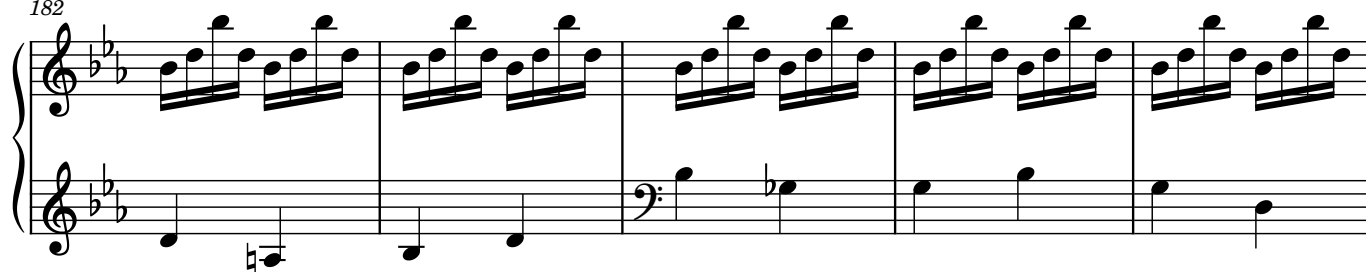
168



175



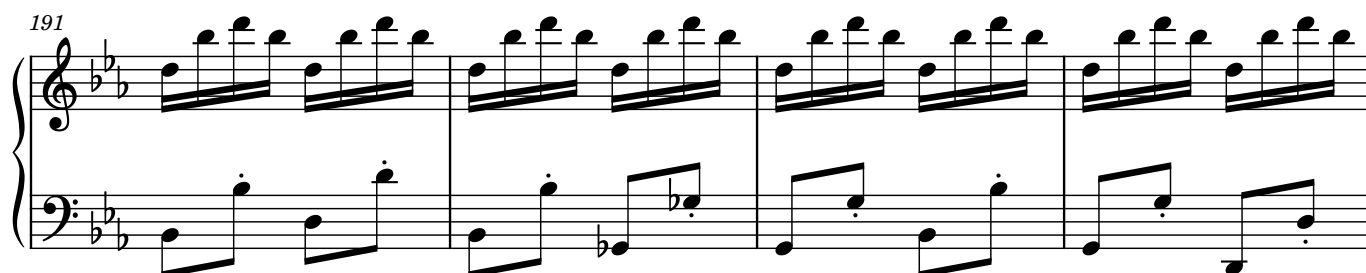
182



187




191



195



201



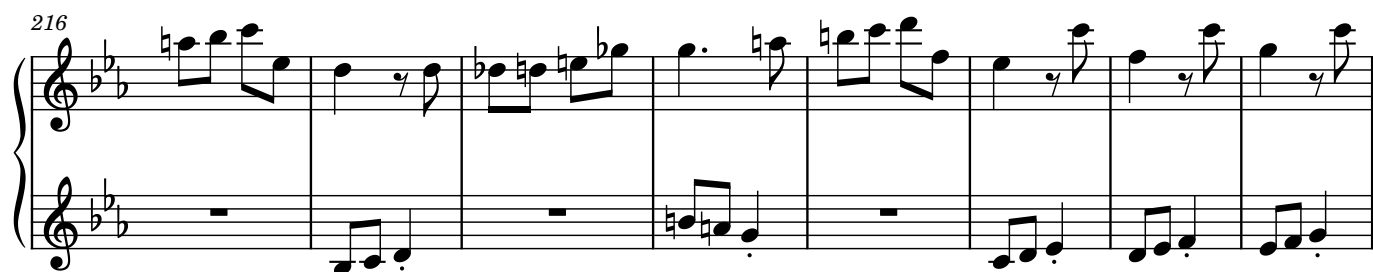
Measures 201-207. The music is in B-flat major (two flats). The right hand features a melodic line with eighth and sixteenth notes, often beamed together. The left hand provides a bass line with eighth and sixteenth notes, sometimes including rests.

208



Measures 208-215. The right hand continues the melodic development with various note values and rests. The left hand has several measures of whole rests, indicating a more active role for the right hand in this section.

216



Measures 216-223. The right hand features more complex melodic patterns with beamed sixteenth notes. The left hand has a steady bass line with eighth notes.

224



Measures 224-229. The right hand has a melodic line with some rests. The left hand has a more active bass line with eighth and sixteenth notes.

230



Measures 230-236. The right hand features a melodic line with a trill in measure 235. The left hand has a steady bass line with eighth notes.

237



Measures 237-244. The right hand has a melodic line with many beamed sixteenth notes, creating a fast, flowing texture. The left hand has a steady bass line with eighth notes.

♪ = 122

♪ = 123

♪ = 124

♪ = 125

♪ = 126

♪ = 127

♪ = 128

♪ = 119

♪ = 120

♪ = 121

246

♪ = 122

♪ = 123

♪ = 124

♪ = 125

♪ = 126

♪ = 127

♪ = 128

♪ = 119

♪ = 120

♪ = 121

8

♪ = 129

♪ = 128

♪ = 127

♪ = 126

♪ = 124

♪ = 123

♪ = 122

♪ = 120

♪ = 119

♪ = 118

♪ = 116

♪ = 115

♪ = 114

♪ = 112

♪ = 111

♪ = 110

♪ = 108

♪ = 107

♪ = 105

♪ = 104

♪ = 103

♪ = 101

♪ = 100

♪ = 99

♪ = 97

♪ = 96

♪ = 95

♪ = 93

♪ = 92

♪ = 91

♪ = 89

♪ = 88

♪ = 87

♪ = 85

♪ = 84

♪ = 82

♪ = 81

♪ = 80

♪ = 78

♪ = 77

♪ = 76

♪ = 74

♪ = 73

♪ = 72

♪ = 70

♪ = 69

♪ = 68

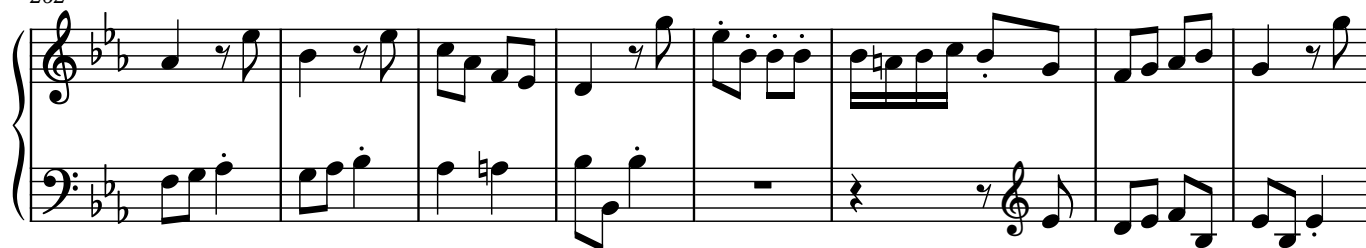
♪ = 66

♪ = 65

254



262



270



278



286



294



302

Measures 302-309 of a musical score in B-flat major (two flats). The right hand features a melodic line with eighth and sixteenth notes, including some triplets. The left hand provides a bass line with eighth and sixteenth notes, including a triplet in measure 308. A fermata is placed over the final notes of measure 309.

310

Measures 310-314 of a musical score in B-flat major. The right hand plays a continuous sixteenth-note arpeggiated pattern. The left hand plays a steady eighth-note bass line.

315

Measures 315-319 of a musical score in B-flat major. The right hand continues the sixteenth-note arpeggiated pattern. The left hand features a more complex bass line with eighth and sixteenth notes, including some triplets.

320

Measures 320-324 of a musical score in B-flat major. The right hand continues the sixteenth-note arpeggiated pattern. The left hand continues with a complex bass line featuring eighth and sixteenth notes.

325

Measures 325-332 of a musical score in B-flat major. The right hand features a melodic line with eighth and sixteenth notes. The left hand continues with a complex bass line featuring eighth and sixteenth notes.

333

Measures 333-339 of a musical score in B-flat major. The right hand features a melodic line with eighth and sixteenth notes. The left hand continues with a complex bass line featuring eighth and sixteenth notes.

342

350

357

364

372

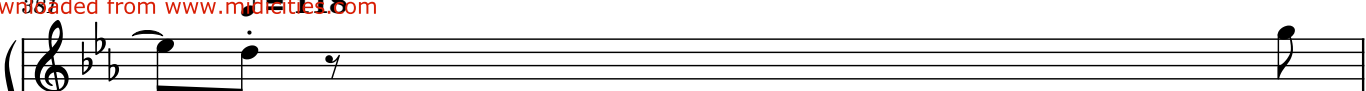
379

♪ = 129
♪ = 128
♪ = 127
♪ = 126
♪ = 124
♪ = 123
♪ = 122
♪ = 120
♪ = 119
♪ = 118
♪ = 116
♪ = 115
♪ = 114
♪ = 112
♪ = 111
♪ = 110
♪ = 108
♪ = 107
♪ = 105
♪ = 104
♪ = 103
♪ = 101
♪ = 100
♪ = 99
♪ = 97
♪ = 96
♪ = 95
♪ = 93
♪ = 92
♪ = 91
♪ = 89
♪ = 88
♪ = 87
♪ = 85
♪ = 84
♪ = 82
♪ = 81
♪ = 80
♪ = 78
♪ = 77
♪ = 76
♪ = 74
♪ = 73
♪ = 72
♪ = 70
♪ = 69
♪ = 68
♪ = 66
♪ = 65

♪ = 118

38

Downloaded from www.midi-ites.com



382



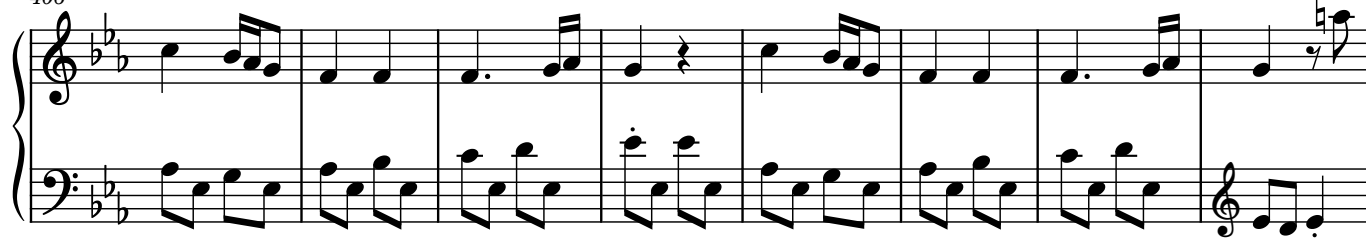
390



398



406



414



422



430

430

438

438

443

443

448

448

453

453

461

♪ = 108⁵

♪ = 109

♪ = 110

♪ = 111

♪ = 112

♪ = 113

♪ = 114

♪ = 115

♪ = 116

♪ = 117

♪ = 118

♪ = 119

♪ = 120

♪ = 121

♪ = 122

♪ = 123

♪ = 124

♪ = 125

♪ = 126

♪ = 127

♪ = 128

461 462 463 464 465