

♩ = 126

Banjo, Default (MIDI)



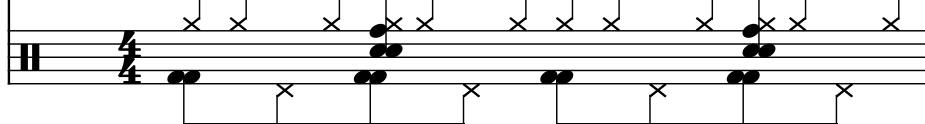
Saw Synthesizer, 3xOsc #2 (MIDI)



Organ, 3xOsc #3 (MIDI)



Drumset, MIDI out



2

Bj.



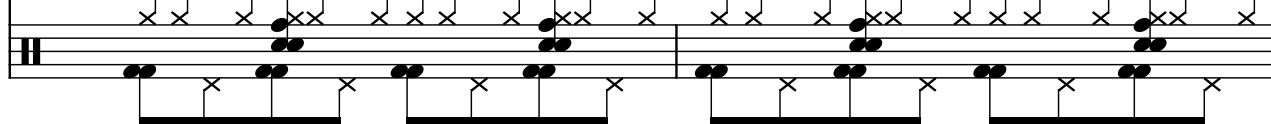
Synth.



Org.



D. Set



4

Bj.



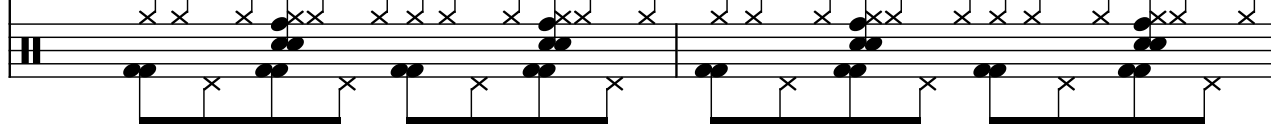
Synth.



Org.



D. Set



6

Bj.

Synth.

Org.

D. Set

This system contains measures 6 and 7 of a musical score. It features four staves: Bj. (Bassoon), Synth. (Synthesizer), Org. (Organ), and D. Set (Drum Set). The key signature has two flats (Bb and Eb), and the time signature is 8/8. Measure 6 shows the Bj. staff with a series of eighth and sixteenth notes, the Synth. staff with a single eighth note followed by a half note, the Org. staff with a series of eighth notes, and the D. Set staff with a complex drum pattern including snare, bass, and cymbal hits. Measure 7 continues the patterns, with the Synth. staff adding a second half note.

8

Bj.

Synth.

Org.

D. Set

This system contains measures 8 and 9 of the musical score. The instrumentation remains the same: Bj., Synth., Org., and D. Set. Measure 8 shows the Bj. staff with a series of eighth and sixteenth notes, the Synth. staff with a single eighth note followed by a half note, the Org. staff with a series of eighth notes, and the D. Set staff with a complex drum pattern. Measure 9 continues the patterns, with the Synth. staff adding a second half note. The system concludes with a double bar line.