

♩ = 120

Piano, S.O.S.

;Benny Andersson / Bjorn Ulvaeus / Stig Anderson



Fretless Electric Bass, S.O.S.

;Benny Andersson / Bjorn Ulvaeus / Stig Anderson



Square Synthesizer, S.O.S.

;Benny Andersson / Bjorn Ulvaeus / Stig Anderson



Voice, S.O.S.

;Benny Andersson / Bjorn Ulvaeus / Stig Anderson



Voice, S.O.S.

;Benny Andersson / Bjorn Ulvaeus / Stig Anderson



Pad Synthesizer, S.O.S.

;Benny Andersson / Bjorn Ulvaeus / Stig Anderson



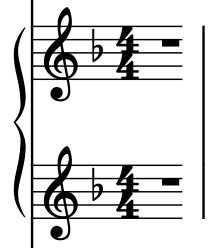
Bass Synthesizer, S.O.S.

;Benny Andersson / Bjorn Ulvaeus / Stig Anderson



Electric Piano, S.O.S.

;Benny Andersson / Bjorn Ulvaeus / Stig Anderson



Drumset, S.O.S.

;Benny Andersson / Bjorn Ulvaeus / Stig Anderson



Electric Guitar, S.O.S.

;Benny Andersson / Bjorn Ulvaeus / Stig Anderson



Tenor Recorder, S.O.S.

;Benny Andersson / Bjorn Ulvaeus / Stig Anderson



Acoustic Guitar, S.O.S.

;Benny Andersson / Bjorn Ulvaeus / Stig Anderson



Tenor, S.O.S.

;Benny Andersson / Bjorn Ulvaeus / Stig Anderson



2

Pno.

Frtl. El. B.

Synth.

Vo.

Vo.

Synth.

Synth.

El. Pno.

D. Set

El. Guit.

T. Rec.

Guit.

T.

6

Pno.

Frtl. El. B.

Synth.

Vo.

Vo.

Synth.

Synth.

El. Pno.

D. Set

El. Guit.

T. Rec.

Guit.

T.

10

Pno.

Frtl. El. B.

Synth.

Vo.

Vo.

Synth.

Synth.

El. Pno.

D. Set

El. Guit.

T. Rec.

Guit.

11

12

Pno.

Frtl. El. B.

Synth.

Vo.

Vo.

Synth.

Synth.

El. Pno.

D. Set

El. Guit.

T. Rec.

Guit.

T.

14

Pno.

Frtl. El. B.

Synth.

Vo.

Vo.

Synth.

Synth.

El. Pno.

D. Set

El. Guit.

T. Rec.

Guit.

T.

15

16

Pno.

Frtl. El. B.

Synth.

Vo.

Vo.

Synth.

Synth.

El. Pno.

D. Set

El. Guit.

T. Rec.

Guit.

T.

19

Pno.

Frtl. El. B.

Synth.

Vo.

Vo.

Synth.

Synth.

El. Pno.

D. Set

El. Guit.

T. Rec.

Guit.

T.

19

20

21

Pno.

Frtl. El. B.

Synth.

Vo.

Vo.

Synth.

Synth.

El. Pno.

D. Set

El. Guit.

T. Rec.

Guit.

T.

Downloaded from www.mididirect.com

23

Pno.

Frtl. El. B.

Synth.

Vo.

Vo.

Synth.

Synth.

El. Pno.

D. Set

El. Guit.

T. Rec.

Guit.

T.

23

24

Pno.

Frtl. El. B.

Synth.

Vo.

Vo.

Synth.

Synth.

El. Pno.

D. Set

El. Guit.

T. Rec.

Guit.

T.

26

Pno.

Frtl. El. B.

Synth.

Vo.

Vo.

Synth.

Synth.

El. Pno.

D. Set

El. Guit.

T. Rec.

Guit.

T.

The musical score for page 26 is written for a multi-instrument ensemble. The instruments and their parts are as follows:

- Pno. (Piano):** Two staves. The right hand plays a series of eighth notes in the treble clef, while the left hand plays chords and single notes in the bass clef.
- Frtl. El. B. (Fretless Electric Bass):** One staff in bass clef, playing a melodic line with eighth notes and a few chords.
- Synth. (Synthesizer):** Three staves, all in bass clef, each containing a single whole rest, indicating they are silent for this measure.
- Vo. (Vocals):** Two staves in treble clef. The first staff has a single eighth note followed by a whole rest. The second staff has a whole note chord followed by a whole rest.
- El. Pno. (Electric Piano):** Two staves in treble clef, both containing single whole rests.
- D. Set (Drum Set):** One staff in treble clef, showing a pattern of eighth notes with 'x' marks above them, indicating cymbal hits.
- El. Guit. (Electric Guitar):** One staff in treble clef, playing a melodic line with eighth notes and a few chords.
- T. Rec. (Trumpet):** One staff in treble clef, containing a single whole rest.
- Guit. (Guitar):** One staff in treble clef, playing a melodic line with eighth notes and a few chords.
- T. (Trumpet):** One staff in treble clef, containing a single whole rest.

27

Pno.

Frtl. El. B.

Synth.

Vo.

Vo.

Synth.

Synth.

El. Pno.

D. Set

El. Guit.

T. Rec.

Guit.

T.

29

Pno.

Frtl. El. B.

Synth.

Vo.

Vo.

Synth.

Synth.

El. Pno.

D. Set

El. Guit.

T. Rec.

Guit.

T.

29

Pno.

Frtl. El. B.

Synth.

Vo.

Vo.

Synth.

Synth.

El. Pno.

D. Set

El. Guit.

T. Rec.

Guit.

T.

30

Pno.

Frtl. El. B.

Synth.

Vo.

Vo.

Synth.

Synth.

El. Pno.

D. Set

El. Guit.

T. Rec.

Guit.

T.

31

Pno.

Frtl. El. B.

Synth.

Vo.

Vo.

Synth.

Synth.

El. Pno.

D. Set

El. Guit.

T. Rec.

Guit.

T.

32

Pno.

Frtl. El. B.

Synth.

Vo.

Vo.

Synth.

Synth.

El. Pno.

D. Set

El. Guit.

T. Rec.

Guit.

T.

32

33

Pno.

Frtl. El. B.

Synth.

Vo.

Vo.

Synth.

Synth.

El. Pno.

D. Set

El. Guit.

T. Rec.

Guit.

T.

34

Pno.

Frtl. El. B.

Synth.

Vo.

Vo.

Synth.

Synth.

El. Pno.

D. Set

El. Guit.

T. Rec.

Guit.

T.

7

35

Pno.

Frtl. El. B.

Synth.

Vo.

Vo.

Synth.

Synth.

El. Pno.

D. Set

El. Guit.

T. Rec.

Guit.

T.

35

36

37

38

36

Pno.

Frtl. El. B.

Synth.

Vo.

Vo.

Synth.

Synth.

El. Pno.

D. Set

El. Guit.

T. Rec.

Guit.

T.

The musical score for page 21, starting at measure 36, is arranged for a large ensemble. The piano (Pno.) part features a complex melody in the right hand, with a steady bass line in the left hand. The electric bass (Frtl. El. B.) line follows a similar pattern. The synth parts provide harmonic support. The vocal parts have a melodic line. The electric piano (El. Pno.) and guitar (Guit.) parts are mostly silent. The drum set (D. Set) part has a complex rhythm. The electric guitar (El. Guit.) part has a few notes. The trumpet (T. Rec.) and guitar (Guit.) parts are also mostly silent. The tenor (T.) part has a few notes.

37

Pno.

Frtl. El. B.

Synth.

Vo.

Vo.

Synth.

Synth.

El. Pno.

D. Set

El. Guit.

T. Rec.

Guit.

T.

22

38

Pno.

Frtl. El. B.

Synth.

Vo.

Vo.

Synth.

Synth.

El. Pno.

D. Set

El. Guit.

T. Rec.

Guit.

39

Pno.

Frtl. El. B.

Synth.

Vo.

Vo.

Synth.

Synth.

El. Pno.

D. Set

El. Guit.

T. Rec.

Guit.

T.

40

Pno.

Frtl. El. B.

Synth.

Vo.

Vo.

Synth.

Synth.

El. Pno.

D. Set

El. Guit.

T. Rec.

Guit.

T.

40

41

Pno.

Frtl. El. B.

Synth.

Vo.

Vo.

Synth.

Synth.

El. Pno.

D. Set

El. Guit.

T. Rec.

Guit.

T.

43

Pno.

Frtl. El. B.

Synth.

Vo.

Vo.

Synth.

Synth.

El. Pno.

D. Set

El. Guit.

T. Rec.

Guit.

T.

43

45

Pno.

Frtl. El. B.

Synth.

Vo.

Vo.

Synth.

Synth.

El. Pno.

D. Set

El. Guit.

T. Rec.

Guit.

T.

47

Pno.

Frtl. El. B.

Synth.

Vo.

Vo.

Synth.

Synth.

El. Pno.

D. Set

El. Guit.

T. Rec.

Guit.

T.

The musical score for page 29, starting at measure 47, is arranged in a multi-staff format. The staves are labeled on the left as follows: Pno., Frtl. El. B., Synth., Vo., Vo., Synth., Synth., El. Pno., D. Set, El. Guit., T. Rec., Guit., and T. The piano part (Pno.) is the most active, featuring a complex melody in the right hand and a more rhythmic bass line in the left hand. The other instruments are mostly silent, with some activity in the vocal part (Vo.) and the T. Rec. part. The score is written in a key with one flat (B-flat) and a common time signature (C).

50

Pno.

Frtl. El. B.

Synth.

Vo.

Vo.

Synth.

Synth.

El. Pno.

D. Set

El. Guit.

T. Rec.

Guit.

T.

51

52

Pno.

Frtl. El. B.

Synth.

Vo.

Vo.

Synth.

Synth.

El. Pno.

D. Set

El. Guit.

T. Rec.

Guit.

T.

8

3

8

54

Pno.

Frtl. El. B.

Synth.

Vo.

Vo.

Synth.

Synth.

El. Pno.

D. Set

El. Guit.

T. Rec.

Guit.

T.

56

Pno.

Frtl. El. B.

Synth.

Vo.

Vo.

Synth.

Synth.

El. Pno.

D. Set

El. Guit.

T. Rec.

Guit.

T.

56

57

Pno.

Frtl. El. B.

Synth.

Vo.

Vo.

Synth.

Synth.

El. Pno.

D. Set

El. Guit.

T. Rec.

Guit.

T.

59

Pno.

Frtl. El. B.

Synth.

Vo.

Vo.

Synth.

Synth.

El. Pno.

D. Set

El. Guit.

T. Rec.

Guit.

T.

59

Pno.

Frtl. El. B.

Synth.

Vo.

Vo.

Synth.

Synth.

El. Pno.

D. Set

El. Guit.

T. Rec.

Guit.

T.

60

Pno.

Frtl. El. B.

Synth.

Vo.

Vo.

Synth.

Synth.

El. Pno.

D. Set

El. Guit.

T. Rec.

Guit.

T.

61

Pno.

Frtl. El. B.

Synth.

Vo.

Vo.

Synth.

Synth.

El. Pno.

D. Set

El. Guit.

T. Rec.

Guit.

T.

The musical score for page 37, starting at measure 61, is arranged for a large ensemble. The piano (Pno.) part consists of a treble staff with a melodic line and a bass staff with a harmonic accompaniment. The electric bass (Frtl. El. B.) part is in the bass staff. The vocal parts (Vo.) are in the treble staff. The electric guitar (Guit.) and electric piano (El. Pno.) parts are in the bass staff. The drums (D. Set) are in the drum staff. The synthesizer (Synth.) is in the bass staff. The tuba (T.) is in the bass staff. The tuba (T.) is in the bass staff. The tuba (T.) is in the bass staff.

62

Pno.

Frtl. El. B.

Synth.

Vo.

Vo.

Synth.

Synth.

El. Pno.

D. Set

El. Guit.

T. Rec.

Guit.

T.

63

Pno.

Frtl. El. B.

Synth.

Vo.

Vo.

Synth.

Synth.

El. Pno.

D. Set

El. Guit.

T. Rec.

Guit.

T.

The musical score for page 39, starting at measure 63, is arranged for a large ensemble. The piano (Pno.) part features a descending melodic line in the right hand and a steady bass line in the left hand. The electric bass (Frtl. El. B.) part follows a similar descending pattern. The vocal parts (Vo.) have a melodic line in the first voice and a sustained note in the second. The electric piano (El. Pno.) and synthesizer (Synth.) parts are mostly silent. The drum set (D. Set) has a complex, rhythmic pattern. The electric guitar (El. Guit.) has a sustained note. The tenor recorder (T. Rec.) and guitar (Guit.) are silent. The tenor part (T.) has a single note.

64

Pno.

Frtl. El. B.

Synth.

Vo.

Vo.

Synth.

Synth.

El. Pno.

D. Set

El. Guit.

T. Rec.

Guit.

T.

7

65

Pno.

Frtl. El. B.

Synth.

Vo.

Vo.

Synth.

Synth.

El. Pno.

D. Set

El. Guit.

T. Rec.

Guit.

T.

The musical score for page 41, starting at measure 65, is arranged for a large ensemble. The piano part features a complex melody in the right hand and a bass line in the left. The fretless electric bass line is active. Two vocal parts have long, sustained notes. The drum set part shows a complex rhythmic pattern. The electric guitar and tenor recorder parts are mostly silent, indicated by whole rests. The tenor part has a simple melody.

66

Pno.

Frtl. El. B.

Synth.

Vo.

Vo.

Synth.

Synth.

El. Pno.

D. Set

El. Guit.

T. Rec.

Guit.

T.

67

Pno.

Frtl. El. B.

Synth.

Vo.

Vo.

Synth.

Synth.

El. Pno.

D. Set

El. Guit.

T. Rec.

Guit.

T.

68

Pno.

Frtl. El. B.

Synth.

Vo.

Vo.

Synth.

Synth.

El. Pno.

D. Set

El. Guit.

T. Rec.

Guit.

68

69

70

71

69

Pno.

Frtl. El. B.

Synth.

Vo.

Vo.

Synth.

Synth.

El. Pno.

D. Set

El. Guit.

T. Rec.

Guit.

T.

71

Pno.

Frtl. El. B.

Synth.

Vo.

Vo.

Synth.

Synth.

El. Pno.

D. Set

El. Guit.

T. Rec.

Guit.

72

73

Pno.

Frtl. El. B.

Synth.

Vo.

Vo.

Synth.

Synth.

El. Pno.

D. Set

El. Guit.

T. Rec.

Guit.

T.

8

3

75

The musical score for measures 75 and 76 features the following parts:

- Pno.:** Piano accompaniment. Measure 75 has a treble staff with a half note G4, a quarter note F#4, and a quarter note E4, and a bass staff with a half note G3 and a quarter note F#3. Measure 76 has a treble staff with a half note G4, a quarter note F#4, and a quarter note E4, and a bass staff with a half note G3 and a quarter note F#3.
- Frtl. El. B.:** First electric bass line. Measure 75 has a half note G3 and a quarter note F#3. Measure 76 has a half note G3 and a quarter note F#3.
- Synth.:** Synthesizer. Measure 75 has a half note G3 and a quarter note F#3. Measure 76 has a half note G3 and a quarter note F#3.
- Vo.:** Vocals. Measure 75 has a half note G4 and a quarter note F#4. Measure 76 has a half note G4 and a quarter note F#4.
- Synth.:** Synthesizer. Measure 75 has a half note G4 and a quarter note F#4. Measure 76 has a half note G4 and a quarter note F#4.
- Synth.:** Synthesizer. Measure 75 has a half note G3 and a quarter note F#3. Measure 76 has a half note G3 and a quarter note F#3.
- El. Pno.:** Electric piano. Measure 75 has a half note G4 and a quarter note F#4. Measure 76 has a half note G4 and a quarter note F#4.
- D. Set:** Drum set. Measure 75 has a half note G3 and a quarter note F#3. Measure 76 has a half note G3 and a quarter note F#3.
- El. Guit.:** Electric guitar. Measure 75 has a half note G3 and a quarter note F#3. Measure 76 has a half note G3 and a quarter note F#3.
- T. Rec.:** Tenor recorder. Measure 75 has a half note G4 and a quarter note F#4. Measure 76 has a half note G4 and a quarter note F#4.
- Guit.:** Guitar. Measure 75 has a half note G3 and a quarter note F#3. Measure 76 has a half note G3 and a quarter note F#3.
- T.:** Trumpet. Measure 75 has a half note G4 and a quarter note F#4. Measure 76 has a half note G4 and a quarter note F#4.

76

Pno.

Frtl. El. B.

Synth.

Vo.

Vo.

Synth.

Synth.

El. Pno.

D. Set

El. Guit.

T. Rec.

Guit.

T.

78

Pno.

Frtl. El. B.

Synth.

Vo.

Vo.

Synth.

Synth.

El. Pno.

D. Set

El. Guit.

T. Rec.

Guit.

T.

78

Pno.

Frtl. El. B.

Synth.

Vo.

Vo.

Synth.

Synth.

El. Pno.

D. Set

El. Guit.

T. Rec.

Guit.

T.

79

Pno.

Frtl. El. B.

Synth.

Vo.

Vo.

Synth.

Synth.

El. Pno.

D. Set

El. Guit.

T. Rec.

Guit.

T.

79

80

Pno.

Frtl. El. B.

Synth.

Vo.

Vo.

Synth.

Synth.

El. Pno.

D. Set

El. Guit.

T. Rec.

Guit.

T.

80

81

82

83

81

Pno.

Frtl. El. B.

Synth.

Vo.

Vo.

Synth.

Synth.

El. Pno.

D. Set

El. Guit.

T. Rec.

Guit.

T.

82

Pno.

Frtl. El. B.

Synth.

Vo.

Vo.

Synth.

Synth.

El. Pno.

D. Set

El. Guit.

T. Rec.

Guit.

T.

83

Pno.

Frtl. El. B.

Synth.

Vo.

Vo.

Synth.

Synth.

El. Pno.

D. Set

El. Guit.

T. Rec.

Guit.

T.

84

Pno.

Frtl. El. B.

Synth.

Vo.

Vo.

Synth.

Synth.

El. Pno.

D. Set

El. Guit.

T. Rec.

Guit.

T.

85

85

Pno.

Frtl. El. B.

Synth.

Vo.

Vo.

Synth.

Synth.

El. Pno.

D. Set

El. Guit.

T. Rec.

Guit.

T.

86

Pno.

Frtl. El. B.

Synth.

Vo.

Vo.

Synth.

Synth.

El. Pno.

D. Set

El. Guit.

T. Rec.

Guit.

T.

86

87

Pno.

Frtl. El. B.

Synth.

Vo.

Vo.

Synth.

Synth.

El. Pno.

D. Set

El. Guit.

T. Rec.

Guit.

T.

88

Pno.

Frtl. El. B.

Synth.

Vo.

Vo.

Synth.

Synth.

El. Pno.

D. Set

El. Guit.

T. Rec.

Guit.

T.

The musical score for page 88 is arranged in a multi-staff format. The instruments and their parts are as follows:

- Pno. (Piano):** The top staff, featuring a treble and bass clef. The melody in the treble clef starts with a half note G4, followed by quarter notes A4, B4, and C5. The bass clef part starts with a half note G3, followed by quarter notes A3, B3, and C4. The piece concludes with a sharp sign (#) on the treble staff.
- Frtl. El. B. (Fretless Electric Bass):** The second staff, featuring a bass clef. The melody starts with a half note G2, followed by quarter notes A2, B2, and C3. The piece concludes with a sharp sign (#) on the bass staff.
- Synth. (Synthesizer):** The third staff, featuring a bass clef. The melody starts with a half note G2, followed by quarter notes A2, B2, and C3. The piece concludes with a sharp sign (#) on the bass staff.
- Vo. (Vocals):** The fourth and fifth staves, featuring a treble clef. The melody starts with a half note G4, followed by quarter notes A4, B4, and C5. The piece concludes with a sharp sign (#) on the treble staff.
- Synth. (Synthesizer):** The sixth and seventh staves, featuring a treble and bass clef. Both staves are empty, indicating no part for the synthesizer in this section.
- El. Pno. (Electric Piano):** The eighth staff, featuring a treble and bass clef. Both staves are empty, indicating no part for the electric piano in this section.
- D. Set (Drum Set):** The ninth staff, featuring a drum clef. The part consists of a series of eighth notes, starting with a half note G2, followed by quarter notes A2, B2, and C3. The piece concludes with a sharp sign (#) on the drum staff.
- El. Guit. (Electric Guitar):** The tenth staff, featuring a treble clef. The part consists of a series of eighth notes, starting with a half note G4, followed by quarter notes A4, B4, and C5. The piece concludes with a sharp sign (#) on the treble staff.
- T. Rec. (Trombone):** The eleventh staff, featuring a treble clef. The part consists of a series of eighth notes, starting with a half note G4, followed by quarter notes A4, B4, and C5. The piece concludes with a sharp sign (#) on the treble staff.
- Guit. (Guitar):** The twelfth staff, featuring a treble clef. The part consists of a series of eighth notes, starting with a half note G4, followed by quarter notes A4, B4, and C5. The piece concludes with a sharp sign (#) on the treble staff.
- T. (Trombone):** The thirteenth staff, featuring a treble clef. The part consists of a series of eighth notes, starting with a half note G4, followed by quarter notes A4, B4, and C5. The piece concludes with a sharp sign (#) on the treble staff.

89

Pno.

Frtl. El. B.

Synth.

Vo.

Vo.

Synth.

Synth.

El. Pno.

D. Set

El. Guit.

T. Rec.

Guit.

T.

90

Pno.

Frtl. El. B.

Synth.

Vo.

Vo.

Synth.

Synth.

El. Pno.

D. Set

El. Guit.

T. Rec.

Guit.

This musical score page, numbered 90, features a multi-stemmed arrangement. The instruments listed on the left are: Pno. (Piano), Frtl. El. B. (Fretless Electric Bass), Synth. (Synthesizer), Vo. (Vocals), Synth. (Synthesizer), Synth. (Synthesizer), El. Pno. (Electric Piano), D. Set (Drum Set), El. Guit. (Electric Guitar), T. Rec. (Trumpet/Recorder), and Guit. (Guitar). The score begins with a treble clef and a key signature of one flat (B-flat). The Piano part features a melodic line in the right hand and a harmonic accompaniment in the left hand. The Fretless Electric Bass part plays a steady, ascending line. The Synthesizer parts include a bass line and a melodic line. The Vocals part has a single note. The Electric Piano part has a single note. The Drum Set part has a complex, syncopated rhythm. The Electric Guitar, Trumpet/Recorder, and Guitar parts have single notes.

91

Pno.

Frtl. El. B.

Synth.

Vo.

Vo.

Synth.

Synth.

El. Pno.

D. Set

El. Guit.

T. Rec.

Guit.

T.

92

Pno.

Frtl. El. B.

Synth.

Vo.

Vo.

Synth.

Synth.

El. Pno.

D. Set

El. Guit.

T. Rec.

Guit.

T.

The musical score for page 92 is arranged in a multi-staff format. The instruments and their parts are as follows:

- Pno. (Piano):** The top staff, consisting of a grand staff with treble and bass clefs. The right hand plays a sequence of eighth notes, while the left hand plays a series of chords.
- Frtl. El. B. (Fretless Electric Bass):** The second staff, featuring a single melodic line with eighth and sixteenth notes.
- Synth. (Synthesizer):** The third staff, showing a melodic line with a few notes and a longer phrase.
- Vo. (Vocals):** The fourth and fifth staves, each containing a vocal line with a mix of eighth and quarter notes.
- Synth. (Synthesizer):** The sixth and seventh staves, both of which are empty, indicating no part for the synthesizer in this section.
- El. Pno. (Electric Piano):** The eighth and ninth staves, also empty.
- D. Set (Drum Set):** The tenth staff, featuring a complex drum pattern with various rhythms and accents.
- El. Guit. (Electric Guitar):** The eleventh staff, showing a single note held for a duration.
- T. Rec. (Trumpet Recorder):** The twelfth staff, which is empty.
- Guit. (Guitar):** The thirteenth staff, which is empty.
- T. (Trumpet):** The bottom staff, showing a few notes at the beginning of the section.

93

93

Pno.

Frtl. El. B.

Synth.

Vo.

Vo.

Synth.

Synth.

El. Pno.

D. Set

El. Guit.

T. Rec.

Guit.

T.

Downloaded from www.midicities.com

94

Pno.

Frtl. El. B.

Synth.

Vo.

Vo.

Synth.

Synth.

El. Pno.

D. Set

El. Guit.

T. Rec.

Guit.

This musical score page, numbered 94, features a multi-stemmed arrangement. The instruments and their parts are as follows:
 - **Pno.**: Piano, with a treble and bass staff. The treble staff has a melodic line with some grace notes, while the bass staff provides a steady accompaniment of eighth notes.
 - **Frtl. El. B.**: Fretless Electric Bass, playing a simple eighth-note line in the bass staff.
 - **Synth.**: Synthesizer, with two staves. The upper staff has a rhythmic pattern of eighth notes with grace notes, and the lower staff has a melodic line with some grace notes.
 - **Vo.**: Two vocal staves, both of which are mostly empty, suggesting a vocal line that is not present or is very sparse.
 - **Synth.**: Two additional synthesizer staves, both of which are empty.
 - **El. Pno.**: Electric Piano, with two staves, both of which are empty.
 - **D. Set**: Drum Set, with a single staff showing a complex rhythmic pattern using various drum symbols.
 - **El. Guit.**: Electric Guitar, with a single staff that is empty.
 - **T. Rec.**: Tenor Recorder, with a single staff that is empty.
 - **Guit.**: Acoustic Guitar, with a single staff that is empty.
 The key signature is one flat (B-flat), and the time signature is not explicitly shown but appears to be 4/4 based on the notation.

95

Pno.

Frtl. El. B.

Synth.

Vo.

Vo.

Synth.

Synth.

El. Pno.

D. Set

El. Guit.

T. Rec.

Guit.

T.

95

96

Pno.

Frtl. El. B.

Synth.

Vo.

Vo.

Synth.

Synth.

El. Pno.

D. Set

El. Guit.

T. Rec.

Guit.

T.

97

97

Pno.

Frtl. El. B.

Synth.

Vo.

Vo.

Synth.

Synth.

El. Pno.

D. Set

El. Guit.

T. Rec.

Guit.

T.

The musical score for page 69, measure 97, is written for a multi-instrument ensemble. The staves are arranged vertically. The piano (Pno.) part is the most complex, featuring a dense texture of beamed sixteenth notes in both hands. The Fretless Electric Bass (Frtl. El. B.) has a simple line of notes. The Synth. parts have sustained notes. The Vocal (Vo.) parts have long, sustained notes. The Electric Piano (El. Pno.) has sustained notes. The Drum Set (D. Set) part is highly active, featuring many sixteenth notes and rests. The Electric Guitar (El. Guit.) has a sustained note. The T. Rec. and Guit. parts have sustained notes. The T. part has a sustained note.

98

Pno.

Frtl. El. B.

Synth.

Vo.

Vo.

Synth.

Synth.

El. Pno.

D. Set

El. Guit.

T. Rec.

Guit.

T.

100

Pno.

Frtl. El. B.

Synth.

Vo.

Vo.

Synth.

Synth.

El. Pno.

D. Set

El. Guit.

T. Rec.

Guit.

T.

The musical score for page 71, measures 100-103, is presented below. The key signature is one flat (B-flat). The Piano (Pno.) part is the only instrument with notation in these measures, featuring a complex, arpeggiated chordal texture. The other instruments, including the Fretless Electric Bass, Synthesizers, Vocals, Electric Piano, Drum Set, Electric Guitar, Tambourine, Guitar, and Trumpet, are all silent (indicated by whole rests) throughout measures 100-103.

Measure 100: The Piano part begins with a complex chordal structure, featuring a mix of eighth and sixteenth notes, and a bass line with a prominent eighth-note pattern. The other instruments are silent.

Measure 101: The Piano part continues with a similar arpeggiated texture, maintaining the complex harmonic structure. The other instruments remain silent.

Measure 102: The Piano part continues with the same arpeggiated texture, showing a slight variation in the harmonic structure. The other instruments remain silent.

Measure 103: The Piano part concludes the sequence with a final arpeggiated chord. The other instruments remain silent.