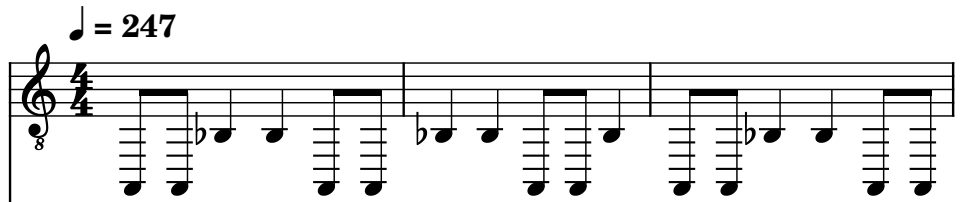


♩ = 247

Electric Guitar, Guitar 1-Head



Divine

Voice, Vocals-Jonathan



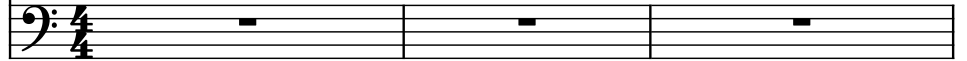
Drumset, Drums-David



Electric Guitar, Guitar 2-Munky

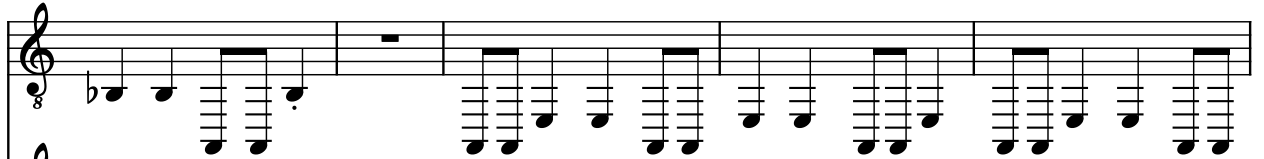


Bass Guitar, Bass-Fieldy



4

El. Guit.



Vo.



D. Set



El. Guit.



B. Guit.



9

El. Guit.

Vo.

D. Set

El. Guit.

B. Guit.

14

El. Guit.

Vo.

D. Set

El. Guit.

B. Guit.

19

El. Guit.

Vo.

D. Set

El. Guit.

B. Guit.

23

El. Guit.

Vo.

D. Set

El. Guit.

B. Guit.

27

El. Guit.

Vo.

D. Set

El. Guit.

B. Guit.

8

31

El. Guit.

Vo.

D. Set

El. Guit.

B. Guit.

8

35

El. Guit.

Vo.

D. Set

El. Guit.

B. Guit.

40

El. Guit.

Vo.

D. Set

El. Guit.

B. Guit.

45

El. Guit.

Vo.

D. Set

El. Guit.

B. Guit.

50

El. Guit.

Vo.

D. Set

El. Guit.

B. Guit.

54

El. Guit.

Vo.

D. Set

El. Guit.

B. Guit.

58

El. Guit.

Vo.

D. Set

El. Guit.

B. Guit.

62

El. Guit.

Vo.

D. Set

El. Guit.

B. Guit.

66

El. Guit.

Vo.

D. Set

El. Guit.

B. Guit.

70

El. Guit.

Vo.

D. Set

El. Guit.

B. Guit.

8

74

El. Guit.

Vo.

D. Set

El. Guit.

B. Guit.

8

79

El. Guit.

Vo.

D. Set

El. Guit.

B. Guit.

84

El. Guit.

Vo.

D. Set

El. Guit.

B. Guit.

89 $\text{♩} = 222$

El. Guit.

Vo.

D. Set

El. Guit.

B. Guit.

93

El. Guit.

Vo.

D. Set

El. Guit.

B. Guit.

95

El. Guit.

Vo.

D. Set

El. Guit.

B. Guit.

97

El. Guit.

Vo.

D. Set

El. Guit.

B. Guit.

99

El. Guit.

Vo.

D. Set

El. Guit.

B. Guit.

8

8

8

8

8

103

El. Guit.

Vo.

D. Set

El. Guit.

B. Guit.

8

8

8

8

8

108

El. Guit.

Vo.

D. Set

El. Guit.

B. Guit.

112

El. Guit.

Vo.

D. Set

El. Guit.

B. Guit.

116

El. Guit.

Vo.

D. Set

El. Guit.

B. Guit.

120

El. Guit.

Vo.

D. Set

El. Guit.

B. Guit.

123

El. Guit.

Vo.

D. Set

El. Guit.

B. Guit.

126

El. Guit.

Vo.

D. Set

El. Guit.

B. Guit.

130

El. Guit.

Vo.

D. Set

El. Guit.

B. Guit.

8

134

El. Guit.

Vo.

D. Set

El. Guit.

B. Guit.

8

138

El. Guit.

Vo.

D. Set

El. Guit.

B. Guit.

144 ♩ = 247

El. Guit.

Vo.

D. Set

El. Guit.

B. Guit.

149

El. Guit.

Vo.

D. Set

El. Guit.

B. Guit.

154

El. Guit.

Vo.

D. Set

El. Guit.

B. Guit.

159

El. Guit.

Vo.

D. Set

El. Guit.

B. Guit.

163

El. Guit.

Vo.

D. Set

El. Guit.

B. Guit.

167

El. Guit.

Vo.

D. Set

El. Guit.

B. Guit.

The musical score for measures 167-170 is arranged in two systems. The first system contains three staves: Electric Guitar (El. Guit.), Voice (Vo.), and Drums (D. Set). The second system contains two staves: Electric Guitar (El. Guit.) and Bass Guitar (B. Guit.). The key signature has one flat (B-flat), and the time signature is 8/8. Measure 167 begins with a treble clef, a key signature change to one flat, and a common time signature change to 8/8. The Electric Guitar part in the first system features a melodic line with a half note B-flat, a quarter note G, and a half note F, followed by a whole note chord of B-flat and G. The Voice part has a whole note chord of B-flat and G. The Drums part has a whole note chord of B-flat and G. The Electric Guitar part in the second system features a melodic line with a half note B-flat, a quarter note G, and a half note F, followed by a whole note chord of B-flat and G. The Bass Guitar part has a whole note chord of B-flat and G. The score ends with a double bar line at the end of measure 170.