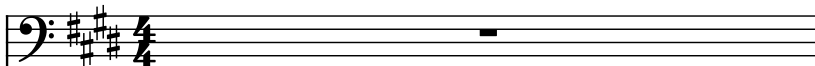
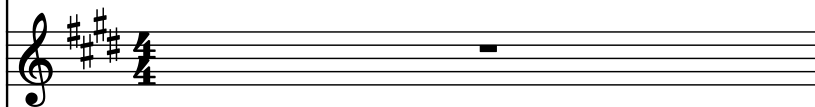


♩ = 127

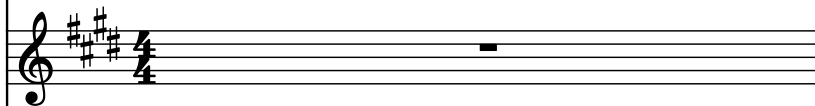
Honky Tonk Piano, Lead



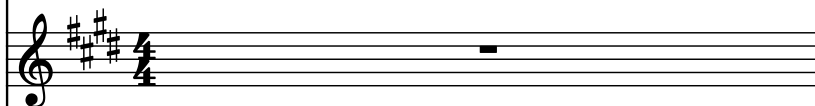
Tenor Recorder, Backup I (recorder)



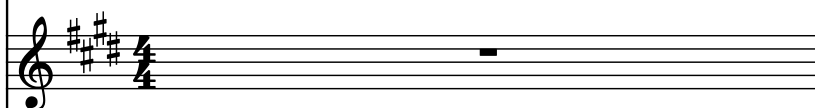
Electric Piano, Backup II (chor. piano)



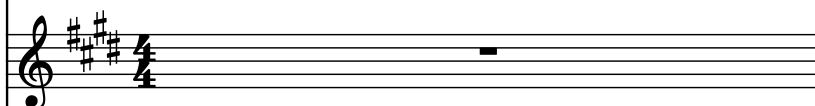
String Synthesizer, Syn strings



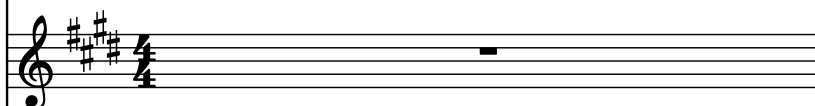
Violin, Violin - L



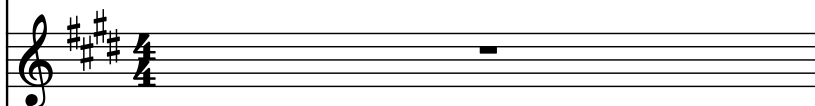
Violin, Violin - R



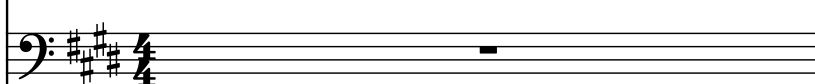
Piano, Piano



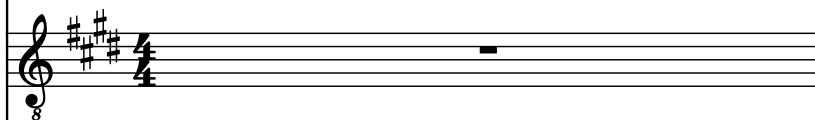
Accordion, Accordion



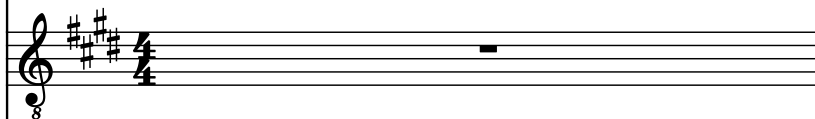
Electric Bass, Fingered bass



Electric Guitar, Muted/Driven guitar - L



Electric Guitar, Muted/Distorted guitar - R



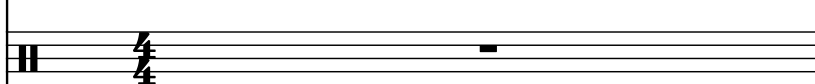
Acoustic Guitar, Steel guitar



Electric Guitar, Clean guitar



Drumset, Drums



Hi-hat, Hi-hats



Thundersheet, Crash



Score for 14 instruments across 3 measures. The key signature is three sharps (F#, C#, G#).

Instrument List:

- Hnk. Pno.
- T. Rec.
- El. Pno.
- Synth.
- Vln.
- Vln.
- Pno.
- Acc.
- El. B.
- El. Guit.
- El. Guit.
- Guit.
- El. Guit.
- D. Set
- Hi-Hat

Measure 1: Most instruments are silent. The Synth. and Vln. (first) have whole rests.

Measure 2:

- Synth.:** Plays a descending sequence of chords: D#m7b9, E7b9, F#m7b9, G#m7b9.
- Vln. (first):** Plays a melodic line starting on D5, moving down to G4, then a series of eighth notes: F#4, E4, D4, C#4, B3, A3, G3, F#3.
- Acc.:** Plays a steady eighth-note pattern: D4, E4, F#4, G#4, A4, B4, C#5, D5.
- El. B.:** Plays a descending eighth-note line: D4, C#4, B3, A3, G3, F#3, E3, D3.
- El. Guit. (1st):** Plays a descending eighth-note line: D4, C#4, B3, A3, G3, F#3, E3, D3.
- Guit.:** Plays a descending eighth-note line: D4, C#4, B3, A3, G3, F#3, E3, D3.
- El. Guit. (2nd):** Plays a descending eighth-note line: D4, C#4, B3, A3, G3, F#3, E3, D3.

Measure 3:

- Acc.:** Continues the eighth-note pattern.
- El. B.:** Continues the descending eighth-note line.
- El. Guit. (1st):** Continues the descending eighth-note line.
- Guit.:** Continues the descending eighth-note line.
- El. Guit. (2nd):** Continues the descending eighth-note line.

Hi-Hat: Plays a steady eighth-note pattern: D4, E4, F#4, G#4, A4, B4, C#5, D5.

5

Score for a 14-piece ensemble, measures 5-7. The key signature is three sharps (F#, C#, G#).

Instrument parts and their notation:

- Hnk. Pno.**: Bass clef, whole rests in measures 5-7.
- T. Rec.**: Treble clef, whole rests in measures 5-7.
- El. Pno.**: Treble clef, whole rests in measures 5-7.
- Synth.**: Treble clef, playing a melodic line with eighth and sixteenth notes, including ties.
- Vln.**: Treble clef, playing a melodic line with a long slur across measures 5-6 and eighth notes in measure 7.
- Vln.**: Treble clef, whole rests in measures 5-7.
- Pno.**: Treble clef, whole rests in measures 5-7.
- Acc.**: Treble clef, playing a steady eighth-note accompaniment.
- El. B.**: Bass clef, playing a melodic line with eighth and sixteenth notes.
- El. Guit.**: Treble clef, playing a melodic line with eighth and sixteenth notes, including ties.
- El. Guit.**: Treble clef, whole rests in measures 5-7.
- Guit.**: Treble clef, playing a melodic line with eighth and sixteenth notes, including ties.
- El. Guit.**: Treble clef, whole rests in measures 5-7.
- D. Set**: Percussion, playing a steady eighth-note pattern.
- Hi-hat**: Percussion, playing a steady eighth-note pattern.
- Thu.**: Percussion, playing a steady eighth-note pattern.

Pdf downloaded from www.midicities.com

11

11

Hnk. Pno.

T. Rec.

El. Pno.

Synth.

Vln.

Vln.

Pno.

Acc.

El. B.

El. Guit.

El. Guit.

Guit.

El. Guit.

D. Set

Hi. bat

Thu.

11

14

Hnk. Pno.

T. Rec.

El. Pno.

Synth.

Vln.

Vln.

Pno.

Acc.

El. B.

El. Guit.

El. Guit.

Guit.

El. Guit.

D. Set

Hihat

Thu

14

15

16

Hnk. Pno.

T. Rec.

El. Pno.

Synth.

Vln.

Vln.

Pno.

Acc.

El. B.

El. Guit.

El. Guit.

Guit.

El. Guit.

D. Set

Hi-hat

Thu.

16

Hi-hat 

22

22

Hnk. Pno.

T. Rec.

El. Pno.

Synth.

Vln.

Vln.

Pno.

Acc.

El. B.

El. Guit.

El. Guit.

Guit.

El. Guit.

D. Set

Hihat

Thu

The musical score for page 22 is written for a multi-instrument ensemble. The key signature is D major (two sharps) and the time signature is 4/4. The instruments listed on the left are: Hnk. Pno. (Horn and Piano), T. Rec. (Trumpet and Recorder), El. Pno. (Electric Piano), Synth. (Synthesizer), Vln. (Violin), Pno. (Piano), Acc. (Accordion), El. B. (Electric Bass), El. Guit. (Electric Guitar), Guit. (Guitar), D. Set (Drum Set), Hihat (Hi-hat), and Thu (Tom-tom). The Hnk. Pno. part begins with a half note D4, followed by a quarter note E4, and then a quarter rest. The El. B. part begins with a half note D2, followed by a quarter note E2, and then a quarter rest. The Synth. part begins with a half note D4, followed by a quarter note E4, and then a quarter rest. The Vln. and Pno. parts are silent. The Acc. part is silent. The El. Guit. and Guit. parts are active, with the El. Guit. playing a series of eighth notes and the Guit. playing a series of eighth notes. The D. Set, Hihat, and Thu parts are active, with the D. Set playing a series of eighth notes, the Hihat playing a series of eighth notes, and the Thu playing a series of eighth notes.

Sheet music for a 12-piece band, measures 24-26. The instruments and their parts are:

- Hnk. Pno.** (Horn & Piano): Bass clef, treble clef, key signature of three sharps (F#, C#, G#). Measures 24-26 show a melodic line.
- T. Rec.** (Trumpet & Recorder): Treble clef, key signature of three sharps. Measures 24-26 show rests.
- El. Pno.** (Electric Piano): Treble clef, key signature of three sharps. Measures 24-26 show rests.
- Synth.** (Synthesizer): Treble clef, key signature of three sharps. Measures 24-26 show a complex, multi-voiced texture.
- Vln.** (Violin): Treble clef, key signature of three sharps. Measures 24-26 show rests.
- Vln.** (Violin): Treble clef, key signature of three sharps. Measures 24-26 show rests.
- Pno.** (Piano): Treble clef, key signature of three sharps. Measures 24-26 show rests.
- Acc.** (Accordion): Treble clef, key signature of three sharps. Measures 24-26 show rests.
- El. B.** (Electric Bass): Bass clef, key signature of three sharps. Measures 24-26 show a rhythmic line.
- El. Guit.** (Electric Guitar): Treble clef, key signature of three sharps. Measures 24-26 show a melodic line.
- El. Guit.** (Electric Guitar): Treble clef, key signature of three sharps. Measures 24-26 show a rhythmic line.
- Guit.** (Guitar): Treble clef, key signature of three sharps. Measures 24-26 show a complex, multi-voiced texture.
- El. Guit.** (Electric Guitar): Treble clef, key signature of three sharps. Measures 24-26 show rests.
- D. Set** (Drum Set): Percussion clef. Measures 24-26 show a rhythmic pattern.
- Hi-hat**: Percussion clef. Measures 24-26 show a rhythmic pattern.
- Thu.** (Tom): Percussion clef. Measures 24-26 show rests.

27

Hnk. Pno.

T. Rec.

El. Pno.

Synth.

Vln.

Vln.

Pno.

Acc.

El. B.

El. Guit.

El. Guit.

Guit.

El. Guit.

D. Set

Hi-hat

Thu.

PDF downloaded from www.midcities.com

30

Hnk. Pno.

T. Rec.

El. Pno.

Synth.

Vln.

Vln.

Pno.

Acc.

El. B.

El. Guit.

El. Guit.

Guit.

El. Guit.

D. Set

Hi-hat

Thu.

32

32

Hnk. Pno.

T. Rec.

El. Pno.

Synth.

Vln.

Vln.

Pno.

Acc.

El. B.

El. Guit.

El. Guit.

Guit.

El. Guit.

D. Set

Thu

Downloaded from www.midcities.com

35

Hnk. Pno.

T. Rec.

El. Pno.

Synth.

Vln.

Vln.

Pno.

Acc.

El. B.

El. Guit.

El. Guit.

Guit.

El. Guit.

D. Set

Hi-hat

Thu

38

38

Hnk. Pno.

T. Rec.

El. Pno.

Synth.

Vln.

Vln.

Pno.

Acc.

El. B.

El. Guit.

El. Guit.

Guit.

El. Guit.

D. Set

Hihat

Thu

38

41

Hnk. Pno.

T. Rec.

El. Pno.

Synth.

Vln.

Vln.

Pno.

Acc.

El. B.

El. Guit.

El. Guit.

Guit.

El. Guit.

D. Set

Hi-hat

Thu.

8

8

8

43

43

Hnk. Pno.

T. Rec.

El. Pno.

Synth.

Vln.

Vln.

Pno.

Acc.

El. B.

El. Guit.

El. Guit.

Guit.

El. Guit.

D. Set

Hi. bat

Thu.

Hi hat Pdf downloaded from www.midicities.com

Pdf downloaded from www.midicities.com

Pdf downloaded from www.midcities.com

52

Hnk. Pno.

T. Rec.

El. Pno.

Synth.

Vln.

Vln.

Pno.

Acc.

El. B.

El. Guit.

El. Guit.

Guit.

El. Guit.

D. Set

Hihat

Thu

54

54

Hnk. Pno.

T. Rec.

El. Pno.

Synth.

Vln.

Vln.

Pno.

Acc.

El. B.

El. Guit.

El. Guit.

Guit.

El. Guit.

D. Set

Hihat

Thu

57

57

Hnk. Pno.

T. Rec.

El. Pno.

Synth.

Vln.

Vln.

Pno.

Acc.

El. B.

El. Guit.

El. Guit.

Guit.

El. Guit.

D. Set

H nat

www.midicities.com

60

Hnk. Pno.

T. Rec.

El. Pno.

Synth.

Vln.

Vln.

Pno.

Acc.

El. B.

El. Guit.

El. Guit.

Guit.

El. Guit.

D. Set

Hihat

Thu

62

62

Hnk. Pno.

T. Rec.

El. Pno.

Synth.

Vln.

Vln.

Pno.

Acc.

El. B.

El. Guit.

El. Guit.

Guit.

El. Guit.

D. Set

Hihat

Thu

25

Pdf downloaded from www.midicities.com

68

68

Hnk. Pno.

T. Rec.

El. Pno.

Synth.

Vln.

Vln.

Pno.

Acc.

El. B.

El. Guit.

El. Guit.

Guit.

El. Guit.

D. Set

Fl. nat

Downloaded from www.midcities.com

71

Hnk. Pno.

T. Rec.

El. Pno.

Synth.

Vln.

Vln.

Pno.

Acc.

El. B.

El. Guit.

El. Guit.

Guit.

El. Guit.

D. Set

Hi-hat

Thu.

8

8

8

8

73

73

Hnk. Pno.

T. Rec.

El. Pno.

Synth.

Vln.

Vln.

Pno.

Acc.

El. B.

El. Guit.

El. Guit.

Guit.

El. Guit.

D. Set

Hi-hat

8

8

8

8

Hi hat Pdf downloaded from www.midicities.com

77

77

Hnk. Pno.

T. Rec.

El. Pno.

Synth.

Vln.

Vln.

Pno.

Acc.

El. B.

El. Guit.

El. Guit.

Guit.

El. Guit.

D. Set

Hihat

Thu

79

79

Hnk. Pno.

T. Rec.

El. Pno.

Synth.

Vln.

Vln.

Pno.

Acc.

El. B.

El. Guit.

El. Guit.

Guit.

El. Guit.

D. Set

Hi hat

Thu

81

81

Hnk. Pno.

T. Rec.

El. Pno.

Synth.

Vln.

Vln.

Pno.

Acc.

El. B.

El. Guit.

El. Guit.

Guit.

El. Guit.

D. Set

Hihat

Thu

Hi-hat 

87

Hnk. Pno.

T. Rec.

El. Pno.

Synth.

Vln.

Vln.

Pno.

Acc.

El. B.

El. Guit.

El. Guit.

Guit.

El. Guit.

D. Set

Hi-hat

Thu.

Pdf downloaded from www.midicities.com

93

93

Hnk. Pno.

T. Rec.

El. Pno.

Synth.

Vln.

Vln.

Pno.

Acc.

El. B.

El. Guit.

El. Guit.

Guit.

El. Guit.

D. Set

Hi. bat

Thu.

Red watermark: Pdf downloaded from www.midicities.com

95

Hnk. Pno.

T. Rec.

El. Pno.

Synth.

Vln.

Vln.

Pno.

Acc.

El. B.

El. Guit.

El. Guit.

Guit.

El. Guit.

D. Set

Hihat

Thu

95

96

97

98

Hnk. Pno.

T. Rec.

El. Pno.

Synth.

Vln.

Vln.

Pno.

Acc.

El. B.

El. Guit.

El. Guit.

Guit.

El. Guit.

D. Set

Hi-hat

8

8

8

8

101

101

Hnk. Pno.

T. Rec.

El. Pno.

Synth.

Vln.

Vln.

Pno.

Acc.

El. B.

El. Guit.

El. Guit.

Guit.

El. Guit.

D. Set

Hi. bat

Thu.

101

103

Hnk. Pno.

T. Rec.

El. Pno.

Synth.

Vln.

Vln.

Pno.

Acc.

El. B.

El. Guit.

El. Guit.

Guit.

El. Guit.

D. Set

Hihat

Thu

Red watermark: Pdf downloaded from www.midicities.com

106

Hnk. Pno.

T. Rec.

El. Pno.

Synth.

Vln.

Vln.

Pno.

Acc.

El. B.

El. Guit.

El. Guit.

Guit.

El. Guit.

D. Set

Hihat

Thu

106

107

108

109

Hnk. Pno.

T. Rec.

El. Pno.

Synth.

Vln.

Vln.

Pno.

Acc.

El. B.

El. Guit.

El. Guit.

Guit.

El. Guit.

D. Set

Hi. bat

Thu.

112

Hnk. Pno.

T. Rec.

El. Pno.

Synth.

Vln.

Vln.

Pno.

Acc.

El. B.

El. Guit.

El. Guit.

Guit.

El. Guit.

D. Set

Hihat

Thu

PDF downloaded from www.midicities.com

115

Hnk. Pno.

T. Rec.

El. Pno.

Synth.

Vln.

Vln.

Pno.

Acc.

El. B.

El. Guit.

El. Guit.

Guit.

El. Guit.

D. Set

Hi-hat

Thu.

PDF download from www.midcities.com

119

Hnk. Pno.

T. Rec.

El. Pno.

Synth.

Vln.

Vln.

Pno.

Acc.

El. B.

El. Guit.

El. Guit.

Guit.

El. Guit.

D. Set

Hihat

Thu.

119

120

121

$\text{♪} = 110$
 $\text{♪} = 111$
 $\text{♪} = 112$
 $\text{♪} = 113$
 $\text{♪} = 114$
 $\text{♪} = 115$
 $\text{♪} = 116$
 $\text{♪} = 117$
 $\text{♪} = 118$
 $\text{♪} = 119$
 $\text{♪} = 120$
 $\text{♪} = 121$
 $\text{♪} = 122$
 $\text{♪} = 123$
 $\text{♪} = 124$
 $\text{♪} = 125$
 $\text{♪} = 126$
 $\text{♪} = 127$
 $\text{♪} = 128$

122

Hnk. Pno.

T. Rec.

El. Pno.

Synth.

Vln.

Vln.

Pno.

Acc.

El. B.

El. Guit.

124

Hnk. Pno.

T. Rec.

El. Pno.

Synth.

Vln.

Vln.

Pno.

Acc.

El. B.

El. Guit.

El. Guit.

Guit.

El. Guit.

D. Set

H. Harp

Thy.

www.midicities.com