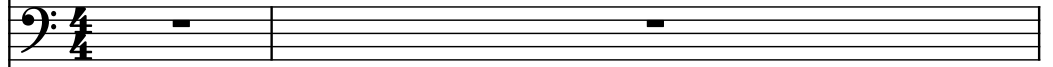


♩ = 93

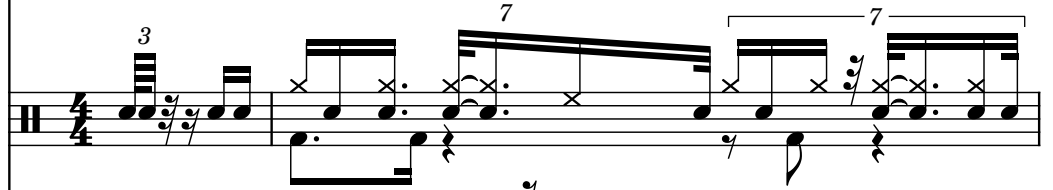
Electric Bass, bass



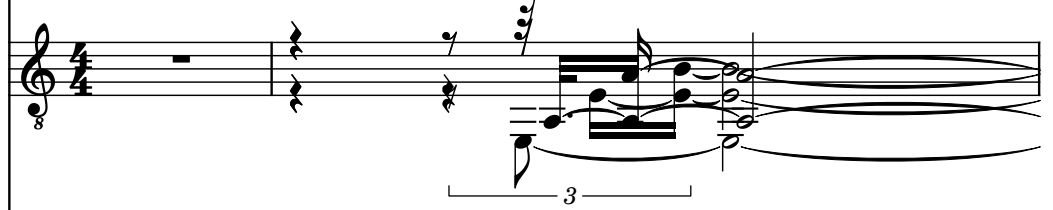
Electric Bass



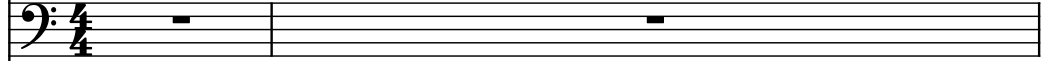
Drumset, drums



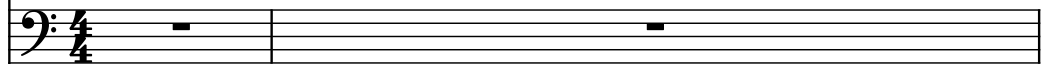
Electric Guitar, guitar 1



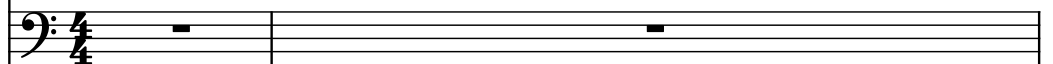
Tuba, voice



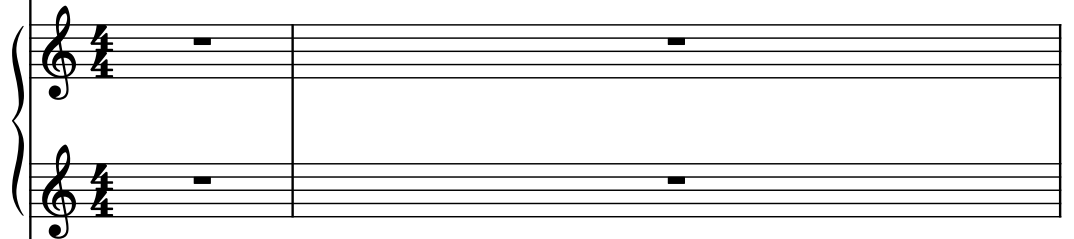
Tuba



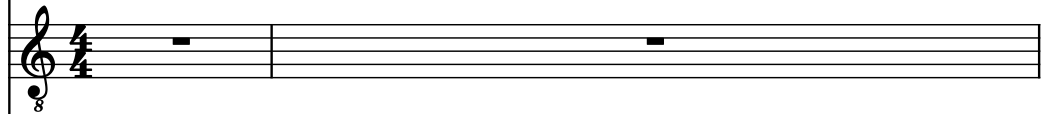
Effect Synthesizer



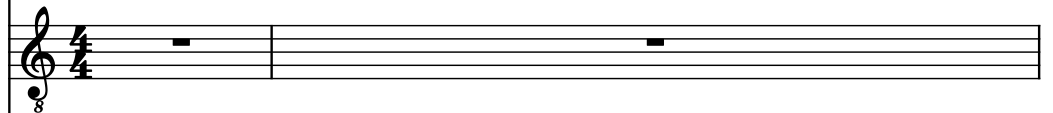
Pad Synthesizer, pad



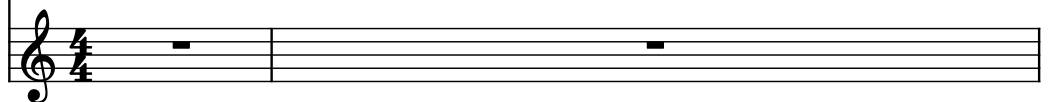
Electric Guitar, guitar 2



Electric Guitar



Violins, strings



El. B.

El. B.

D. Set

El. Guit.

Tba.

Tba.

Synth.

Synth.

El. Guit.

El. Guit.

Vlns.

The musical score for page 2 features the following instruments and notation:

- El. B. (Electric Bass):** Two staves. The first staff contains a melodic line with eighth and quarter notes, including a half-note tie. The second staff contains a whole rest.
- D. Set (Drum Set):** Two staves. The top staff uses a standard drum notation with 'x' marks for cymbals and various note values for drums. The bottom staff contains a whole rest.
- El. Guit. (Electric Guitar):** One staff. It features a complex melodic line with eighth and sixteenth notes, including a triplet of eighth notes and a half-note tie.
- Tba. (Tuba):** Two staves. Both staves contain whole rests.
- Synth. (Synthesizer):** One staff. It contains a whole rest.
- Synth. (Synthesizer):** Two staves. Both staves contain whole rests.
- El. Guit. (Electric Guitar):** One staff. It contains a whole rest.
- El. Guit. (Electric Guitar):** One staff. It contains a whole rest.
- Vlns. (Violins):** One staff. It contains a whole rest.

3

El. B.

El. B.

D. Set

El. Guit.

Tba.

Tba.

Synth.

Synth.

El. Guit.

El. Guit.

Vlns.

4

El. B.

El. B.

D. Set

El. Guit.

Tba.

Tba.

Synth.

Synth.

El. Guit.

El. Guit.

Vlns.

5

El. B.

El. B.

D. Set

El. Guit.

Tba.

Tba.

Synth.

Synth.

El. Guit.

El. Guit.

Vlns.

The musical score for page 5 features the following instruments and notation:

- El. B. (Electric Bass):** The first staff shows a melodic line with eighth and quarter notes, including a slur over a pair of eighth notes.
- El. B. (Electric Bass):** The second staff contains a whole rest.
- D. Set (Drums):** The third staff shows a complex drum pattern with various note values, rests, and accidentals.
- El. Guit. (Electric Guitar):** The fourth staff features a melodic line with eighth and quarter notes, including a slur over a pair of eighth notes.
- Tba. (Trombone):** The fifth staff contains a whole rest.
- Tba. (Trombone):** The sixth staff contains a whole rest.
- Synth. (Synthesizer):** The seventh staff contains a whole rest.
- Synth. (Synthesizer):** The eighth staff, consisting of two staves, contains whole rests.
- El. Guit. (Electric Guitar):** The ninth staff contains a whole rest.
- El. Guit. (Electric Guitar):** The tenth staff contains a whole rest.
- Vlns. (Violins):** The eleventh staff contains a whole rest.

El. B.

El. B.

D. Set

El. Guit.

Tba.

Tba.

Synth.

Synth.

El. Guit.

El. Guit.

Vlns.

The musical score for page 6 features the following instruments and notation:

- El. B. (Electric Bass):** Two staves. The first staff contains a melodic line with eighth and quarter notes, including a half-note tie. The second staff is empty.
- D. Set (Drum Set):** Two staves. The top staff uses a treble clef and contains a complex rhythmic pattern with eighth and sixteenth notes, some marked with 'x'. The bottom staff contains a bass line with eighth and quarter notes.
- El. Guit. (Electric Guitar):** One staff with a treble clef. It features a melodic line with eighth and quarter notes, including a half-note tie and a triplet of eighth notes.
- Tba. (Tuba):** Two staves. Both staves are empty.
- Synth. (Synthesizer):** One staff with a bass clef. It is empty.
- Synth. (Synthesizer):** Two staves with treble clefs, grouped by a brace. Both staves are empty.
- El. Guit. (Electric Guitar):** One staff with a treble clef. It is empty.
- El. Guit. (Electric Guitar):** One staff with a treble clef. It is empty.
- Vlns. (Violins):** One staff with a treble clef. It is empty.

El. B.

El. B.

D. Set

El. Guit.

Tba.

Tba.

Synth.

Synth.

El. Guit.

El. Guit.

Vlns.

The musical score for page 7 features the following instruments and notation:

- El. B. (Electric Bass):** Two staves. The first staff has a single eighth note in the first measure. The second staff has a whole rest in the first measure.
- D. Set (Drum Set):** A single staff with a complex rhythmic pattern involving eighth and sixteenth notes, some marked with 'x' for cymbals. It includes two measures with a '7' above the staff, indicating a 7/8 time signature.
- El. Guit. (Electric Guitar):** A single staff with a complex melodic line, including eighth and sixteenth notes, and a triplet of eighth notes in the second measure.
- Tba. (Tuba):** Two staves. Both have whole rests in the first measure.
- Synth. (Synthesizer):** A single staff with a whole rest in the first measure.
- Synth. (Synthesizer):** A grand staff (two staves) with whole rests in the first measure.
- El. Guit. (Electric Guitar):** A single staff with a whole rest in the first measure.
- El. Guit. (Electric Guitar):** A single staff with a whole rest in the first measure.
- Vlns. (Violins):** A single staff with a whole rest in the first measure.

8

El. B.

El. B.

D. Set

El. Guit.

Tba.

Tba.

Synth.

Synth.

El. Guit.

El. Guit.

Vlns.

Detailed description: This musical score page, numbered 8, contains ten staves. The first two staves are for Electric Bass (El. B.). The third staff is for Drums (D. Set), showing a complex rhythmic pattern with eighth and sixteenth notes, some marked with 'x' for cymbals, and including 7-measure rests. The fourth staff is for Electric Guitar (El. Guit.), featuring a melodic line with a 3-measure rest and a 7-measure rest. The fifth staff is for Trombone (Tba.), with a few notes and a 7-measure rest. The sixth staff is another Trombone (Tba.) staff, mostly empty. The seventh staff is for Synthesizer (Synth.), mostly empty. The eighth and ninth staves are for another Synthesizer (Synth.), also mostly empty. The tenth staff is for Electric Guitar (El. Guit.), mostly empty. The eleventh staff is for another Electric Guitar (El. Guit.), mostly empty. The twelfth staff is for Violins (Vlns.), mostly empty. The score includes various musical notations such as notes, rests, and articulation marks.

El. B.

El. B.

D. Set

El. Guit.

Tba.

Tba.

Synth.

Synth.

El. Guit.

El. Guit.

Vlns.

The musical score for page 9 features the following instruments and notation:

- El. B. (Electric Bass):** The first staff shows a melodic line with eighth and quarter notes, including a slur over a half note.
- El. B. (Electric Bass):** The second staff contains a whole rest.
- D. Set (Drums):** The third staff shows a complex drum pattern with various note values and rests.
- El. Guit. (Electric Guitar):** The fourth staff features a melodic line with eighth and quarter notes, including a slur over a half note.
- Tba. (Trombone):** The fifth staff shows a melodic line with eighth and quarter notes, including a slur over a half note.
- Tba. (Trombone):** The sixth staff contains a whole rest.
- Synth. (Synthesizer):** The seventh staff contains a whole rest.
- Synth. (Synthesizer):** The eighth staff contains a whole rest.
- El. Guit. (Electric Guitar):** The ninth staff contains a whole rest.
- El. Guit. (Electric Guitar):** The tenth staff contains a whole rest.
- Vlns. (Violins):** The eleventh staff contains a whole rest.

El. B.

El. B.

D. Set

El. Guit.

Tba.

Tba.

Synth.

Synth.

El. Guit.

El. Guit.

Vlns.

The musical score for page 10 features ten staves. The first staff (El. B.) contains a melodic line in bass clef with a slur over a quarter note and an eighth note. The second staff (El. B.) is empty. The third staff (D. Set) contains a complex rhythmic pattern with eighth and sixteenth notes, including a triplet of eighth notes. The fourth staff (El. Guit.) contains a melodic line in treble clef with a slur over a quarter note and an eighth note. The fifth staff (Tba.) contains a melodic line in bass clef with a slur over a quarter note and an eighth note. The sixth staff (Tba.) is empty. The seventh staff (Synth.) is empty. The eighth staff (Synth.) is empty. The ninth staff (El. Guit.) is empty. The tenth staff (El. Guit.) is empty. The eleventh staff (Vlns.) is empty.

11

El. B.

El. B.

D. Set

El. Guit.

Tba.

Tba.

Synth.

Synth.

El. Guit.

El. Guit.

Vlns.

The musical score for page 11 features the following instruments and parts:

- El. B. (Electric Bass):** Two staves. The first staff has a few notes in the first measure, while the second staff is mostly silent.
- D. Set (Drums):** A single staff with a complex rhythmic pattern, including eighth and sixteenth notes, and rests.
- El. Guit. (Electric Guitar):** A single staff with a melodic line, including a triplet in the first measure and a long sustain in the second measure.
- Tba. (Trombone):** Two staves. The first staff has a few notes, while the second staff is mostly silent.
- Synth. (Synthesizer):** A single staff with a few notes in the first measure, while the second staff is mostly silent.
- Synth. (Synthesizer):** A single staff with a few notes in the first measure, while the second staff is mostly silent.
- El. Guit. (Electric Guitar):** A single staff with a few notes in the first measure, while the second staff is mostly silent.
- El. Guit. (Electric Guitar):** A single staff with a few notes in the first measure, while the second staff is mostly silent.
- Vlns. (Violins):** A single staff with a few notes in the first measure, while the second staff is mostly silent.

El. B.

El. B.

D. Set

El. Guit.

Tba.

Tba.

Synth.

Synth.

El. Guit.

El. Guit.

Vlns.

The musical score for page 12 features the following instruments and notation:

- El. B. (Electric Bass):** Two staves. The first staff has a bass clef and contains a few notes and rests. The second staff is empty.
- D. Set (Drums):** A single staff with a double bar line at the beginning, indicating a drum part.
- El. Guit. (Electric Guitar):** A single staff with a treble clef and an 8va marking. It contains a complex melodic line with many notes and rests.
- Tba. (Trombone):** Two staves. The first staff has a bass clef and contains a few notes and rests. The second staff is empty.
- Synth. (Synthesizer):** A single staff with a bass clef, containing a few notes and rests.
- Synth. (Synthesizer):** A pair of staves with a brace on the left, both with treble clefs, containing a few notes and rests.
- El. Guit. (Electric Guitar):** A single staff with a treble clef and an 8va marking, containing a few notes and rests.
- El. Guit. (Electric Guitar):** A single staff with a treble clef and an 8va marking, containing a few notes and rests.
- Vlns. (Violins):** A single staff with a treble clef, containing a few notes and rests.

Additional notation includes a 7-measure rest in the D. Set staff, a 3-measure rest in the El. Guit. staff, and a 7-measure rest in the Tba. staff.

13

El. B.

El. B.

D. Set

El. Guit.

Tba.

Tba.

Synth.

Synth.

El. Guit.

El. Guit.

Vlins.

The musical score for page 13 consists of ten staves. The first staff (El. B.) contains a bass line with eighth and quarter notes, including a slur over a pair of eighth notes. The second staff (El. B.) is mostly empty with a few rests. The third staff (D. Set) shows a drum pattern with various note values and rests. The fourth staff (El. Guit.) features a complex guitar part with a triplet of eighth notes, a slur, and a long sustain line. The fifth staff (Tba.) has a bass line with a triplet of eighth notes. The sixth staff (Tba.) is mostly empty. The seventh staff (Synth.) is mostly empty. The eighth staff (Synth.) is a grand staff with two empty staves. The ninth staff (El. Guit.) is mostly empty. The tenth staff (El. Guit.) is mostly empty. The eleventh staff (Vlins.) is mostly empty.

El. B.

El. B.

D. Set

El. Guit.

Tba.

Tba.

Synth.

Synth.

El. Guit.

El. Guit.

Vlns.

The musical score for page 14 features ten staves. The first staff (El. B.) contains a melodic line with eighth and quarter notes. The second staff (El. B.) is mostly empty. The third staff (D. Set) features a complex rhythmic pattern with eighth and sixteenth notes, including triplet markings. The fourth staff (El. Guit.) contains a melodic line with eighth and quarter notes, including a triplet marking. The fifth staff (Tba.) contains a melodic line with eighth and quarter notes, including a triplet marking. The sixth staff (Tba.) is mostly empty. The seventh staff (Synth.) is mostly empty. The eighth staff (Synth.) is mostly empty. The ninth staff (El. Guit.) is mostly empty. The tenth staff (El. Guit.) is mostly empty. The eleventh staff (Vlns.) is mostly empty.

15

El. B.

El. B.

D. Set

El. Guit.

Tba.

Tba.

Synth.

Synth.

El. Guit.

El. Guit.

Vlns.

The musical score for page 15 features ten staves. The first two staves are for Electric Bass (El. B.). The third staff is for Drums (D. Set), showing a complex rhythmic pattern with eighth and sixteenth notes, and rests. The fourth staff is for Electric Guitar (El. Guit.), featuring a melodic line with eighth notes and a triplet of eighth notes. The fifth staff is for Trombone (Tba.), showing a melodic line with eighth notes. The sixth staff is for Trombone (Tba.), showing a melodic line with eighth notes. The seventh staff is for Synthesizer (Synth.), showing a melodic line with eighth notes. The eighth staff is for Synthesizer (Synth.), showing a melodic line with eighth notes. The ninth staff is for Electric Guitar (El. Guit.), showing a melodic line with eighth notes. The tenth staff is for Electric Guitar (El. Guit.), showing a melodic line with eighth notes. The eleventh staff is for Violins (Vlns.), showing a melodic line with eighth notes.

El. B.

El. B.

D. Set

El. Guit.

Tba.

Tba.

Synth.

Synth.

El. Guit.

El. Guit.

Vlns.

The musical score for page 16 features ten staves. The first two staves are for Electric Bass (El. B.). The third staff is for Drums (D. Set), showing a complex rhythmic pattern with eighth and sixteenth notes, and rests. The fourth staff is for Electric Guitar (El. Guit.), featuring a melodic line with eighth notes and a triplet of eighth notes. The fifth staff is for Trombone (Tba.), showing a single note followed by a rest. The sixth staff is also for Trombone (Tba.), showing a single note followed by a rest. The seventh staff is for Synthesizer (Synth.), showing a single note followed by a rest. The eighth and ninth staves are for Synthesizer (Synth.), showing a single note followed by a rest. The tenth staff is for Electric Guitar (El. Guit.), showing a single note followed by a rest. The eleventh staff is for Electric Guitar (El. Guit.), showing a single note followed by a rest. The twelfth staff is for Violins (Vlns.), showing a single note followed by a rest.

17

El. B.

El. B.

D. Set

El. Guit.

Tba.

Tba.

Synth.

Synth.

El. Guit.

El. Guit.

Vlns.

The musical score for page 17 features ten staves. The first two staves are for Electric Bass (El. B.), the third for Double Bass (D. Set), the fourth for Electric Guitar (El. Guit.), the fifth for Trombone (Tba.), the sixth for another Trombone (Tba.), the seventh for Synthesizer (Synth.), the eighth and ninth for two Synthesizer parts (Synth.), the tenth for another Electric Guitar (El. Guit.), the eleventh for another Electric Guitar (El. Guit.), and the twelfth for Violins (Vlns.). The D. Set part includes complex rhythmic patterns with triplets and sixteenth notes, marked with '7' and 'x'. The Synth. part features a long, sustained note with a tremolo effect. The other parts are mostly silent, with some rests and a few notes in the El. B. and Tba. parts.

El. B.

El. B.

D. Set

El. Guit.

Tba.

Tba.

Synth.

Synth.

El. Guit.

El. Guit.

Vlns.

The musical score for page 18 features the following instruments and notation:

- El. B. (Electric Bass):** Two staves. The first staff has a bass clef and contains a dotted quarter note, a half note tied to the next, and a quarter note. The second staff is empty.
- D. Set (Drum Set):** A single staff with a double bar line at the beginning. It contains a series of eighth and sixteenth notes with 'x' marks, indicating cymbal hits, and some notes with slash marks.
- El. Guit. (Electric Guitar):** One staff with a treble clef and an 8va marking. It contains a whole rest.
- Tba. (Tuba):** Two staves. The first staff has a bass clef and contains a half note, a quarter rest, a quarter note, and a half note. The second staff is empty.
- Synth. (Synthesizer):** One staff with a bass clef and a whole note.
- Synth. (Synthesizer):** Two staves with treble clefs, grouped by a brace. Both contain whole rests.
- El. Guit. (Electric Guitar):** Two staves with treble clefs and 8va markings. Both contain whole rests.
- Vlns. (Violins):** One staff with a treble clef and a whole rest.

19

El. B.

El. B.

D. Set

El. Guit.

Tba.

Tba.

Synth.

Synth.

El. Guit.

El. Guit.

Vlns.

The musical score for page 19 features ten staves. The first two staves are for Electric Bass (El. B.), the third for Drums (D. Set), and the fourth for Electric Guitar (El. Guit.). The fifth and sixth staves are for Trombone (Tba.), the seventh for Synthesizer (Synth.), and the eighth and ninth staves are for another set of Synthesizer (Synth.). The tenth and eleventh staves are for Electric Guitar (El. Guit.), and the twelfth staff is for Violins (Vlns.). The score includes various musical notations such as eighth notes, quarter notes, and rests, with some measures marked with a '7' indicating a specific rhythmic pattern. The Synthesizer part on the seventh staff features a long, sustained note with a crescendo and decrescendo marking.

El. B.

El. B.

D. Set

El. Guit.

Tba.

Tba.

Synth.

Synth.

El. Guit.

El. Guit.

Vlns.

The musical score for page 20 features ten staves. The first two staves are for Electric Bass (El. B.). The third staff is for Drums (D. Set), showing a complex rhythmic pattern with eighth and sixteenth notes, and rests. The fourth staff is for Electric Guitar (El. Guit.). The fifth and sixth staves are for Trombone (Tba.). The seventh staff is for Synthesizer (Synth.). The eighth and ninth staves are for another Synthesizer (Synth.). The tenth and eleventh staves are for Electric Guitar (El. Guit.). The twelfth staff is for Violins (Vlns.). The score includes various musical notations such as eighth notes, sixteenth notes, and rests, with some measures containing a '7' indicating a specific technique or measure.

21

El. B.

El. B.

D. Set

El. Guit.

Tba.

Tba.

Synth.

Synth.

El. Guit.

El. Guit.

Vlns.

The musical score for page 21 features the following instruments and notation:

- El. B. (Electric Bass):** Two staves. The first staff has a half note G2, a half note F2 tied to the next, and a quarter rest. The second staff has a whole rest.
- D. Set (Drum Set):** Two staves. The top staff shows a sequence of eighth notes with 'x' marks, some beamed in groups of seven. The bottom staff shows a sequence of eighth notes, some with 'x' marks.
- El. Guit. (Electric Guitar):** One staff with a whole rest and an 8va marking.
- Tba. (Tuba):** Two staves. The first staff has a quarter rest, a half note G2, a half note F2 tied to the next, and a quarter note E2. The second staff has a whole rest.
- Synth. (Synthesizer):** One staff with a whole note G2 and a long, thin, curved line above it.
- Synth. (Synthesizer):** Two staves, both with whole rests.
- El. Guit. (Electric Guitar):** Two staves, both with whole rests and an 8va marking.
- Vlns. (Violins):** One staff with a whole rest.

El. B.

El. B.

D. Set

El. Guit.

Tba.

Tba.

Synth.

Synth.

El. Guit.

El. Guit.

Vlns.

The musical score for page 22 features ten staves. The first two staves are for Electric Bass (El. B.), the third for Drums (D. Set), and the fourth for Electric Guitar (El. Guit.). The fifth staff is for Trombone (Tba.), followed by another Trombone (Tba.) and a Synth. staff. The seventh and eighth staves are for Synth. (Stereo), the ninth for Electric Guitar (El. Guit.), and the tenth for Violins (Vlns.). The Drums staff shows a complex rhythmic pattern with eighth and sixteenth notes, including a triplet of eighth notes. The Electric Bass staves have a few notes, including a triplet of eighth notes. The Trombone staff has a few notes, including a triplet of eighth notes. The Synth. staff has a few notes, including a triplet of eighth notes. The Synth. (Stereo) staves have a few notes, including a triplet of eighth notes. The Electric Guitar staves have a few notes, including a triplet of eighth notes. The Violins staff has a few notes, including a triplet of eighth notes.

23

El. B.

El. B.

D. Set

El. Guit.

Tba.

Tba.

Synth.

Synth.

El. Guit.

El. Guit.

Vlns.

Detailed description: This musical score page, numbered 23, contains ten staves. The first two staves are for Electric Bass (El. B.), both in bass clef. The third staff is for Drums (D. Set) in a standard drum notation. The fourth staff is for Electric Guitar (El. Guit.) in treble clef, marked with an '8'. The fifth and sixth staves are for Trombone (Tba.), both in bass clef. The seventh staff is for Synthesizer (Synth.) in bass clef, featuring a long, tapering line. The eighth and ninth staves are also for Synthesizer (Synth.), both in treble clef, grouped by a brace and marked with an '8'. The tenth staff is for Violins (Vlns.) in treble clef, marked with an '8'. The score includes various musical notations such as eighth notes, sixteenth notes, and rests, with some measures containing 'x' marks.

El. B.

El. B.

D. Set

El. Guit.

Tba.

Tba.

Synth.

Synth.

El. Guit.

El. Guit.

Vlns.

The musical score for page 24 features ten staves. The first two staves are for Electric Bass (El. B.). The third staff is for Drums (D. Set), showing a complex rhythmic pattern with eighth and sixteenth notes, and rests. The fourth staff is for Electric Guitar (El. Guit.), marked with an 8. The fifth and sixth staves are for Trombone (Tba.). The seventh staff is for Synthesizer (Synth.), showing a single note. The eighth and ninth staves are for another Synthesizer (Synth.), with the eighth staff showing a melodic line with a sharp sign. The tenth and eleventh staves are for Electric Guitar (El. Guit.), marked with an 8. The twelfth staff is for Violins (Vlns.), marked with an 8. The score is written in a single system, with measures 24 and 25 indicated by the page number and the staff layout.

25

El. B.

El. B.

D. Set

El. Guit.

Tba.

Tba.

Synth.

Synth.

El. Guit.

El. Guit.

Vlns.

7

7

3

8

8

8

8

El. B.

El. B.

D. Set

El. Guit.

Tba.

Tba.

Synth.

Synth.

El. Guit.

El. Guit.

Vlns.

The musical score for page 26 features ten staves. The first two staves are for Electric Bass (El. B.). The third staff is for Drums (D. Set), showing a complex rhythmic pattern with various note values and rests. The fourth staff is for Electric Guitar (El. Guit.), featuring a melodic line with a triplet of eighth notes and a long sustain. The fifth and sixth staves are for Trombone (Tba.). The seventh staff is for Synthesizer (Synth.). The eighth and ninth staves are for another Synthesizer (Synth.), with the top staff showing a melodic line and the bottom staff showing a sustained note. The tenth staff is for Violins (Vlns.).

27

El. B.

El. B.

D. Set

El. Guit.

Tba.

Tba.

Synth.

Synth.

El. Guit.

El. Guit.

Vlns.

The musical score for page 27 is arranged in a multi-staff format. The instruments and their parts are as follows:

- El. B. (Electric Bass):** The first staff shows a single note in the first measure, followed by rests in the subsequent measures.
- El. B. (Electric Bass):** The second staff shows a single note in the first measure, followed by rests in the subsequent measures.
- D. Set (Double Bass Set):** The third staff shows a complex rhythmic pattern with eighth and sixteenth notes, including a triplet of eighth notes in the first measure.
- El. Guit. (Electric Guitar):** The fourth staff shows a complex rhythmic pattern with eighth and sixteenth notes, including a triplet of eighth notes in the first measure.
- Tba. (Trombone):** The fifth staff shows a single note in the first measure, followed by rests in the subsequent measures.
- Tba. (Trombone):** The sixth staff shows a single note in the first measure, followed by rests in the subsequent measures.
- Synth. (Synthesizer):** The seventh staff shows a single note in the first measure, followed by rests in the subsequent measures.
- Synth. (Synthesizer):** The eighth staff shows a single note in the first measure, followed by rests in the subsequent measures.
- El. Guit. (Electric Guitar):** The ninth staff shows a single note in the first measure, followed by rests in the subsequent measures.
- El. Guit. (Electric Guitar):** The tenth staff shows a single note in the first measure, followed by rests in the subsequent measures.
- Vlns. (Violins):** The eleventh staff shows a single note in the first measure, followed by rests in the subsequent measures.

El. B.

El. B.

D. Set

El. Guit.

Tba.

Tba.

Synth.

Synth.

El. Guit.

El. Guit.

Vlns.

The musical score for page 28 features ten staves. The first two staves are for Electric Bass (El. B.). The third staff is for Drums (D. Set), showing a complex rhythmic pattern with eighth and sixteenth notes, and rests. The fourth staff is for Electric Guitar (El. Guit.), featuring a melodic line with eighth notes and a triplet of eighth notes. The fifth and sixth staves are for Trombone (Tba.). The seventh staff is for Synthesizer (Synth.). The eighth and ninth staves are for another Synthesizer (Synth.), with the eighth staff showing a melodic line with a sharp sign. The tenth staff is for Violins (Vlns.).

29

El. B.

El. B.

D. Set

El. Guit.

Tba.

Tba.

Synth.

Synth.

El. Guit.

El. Guit.

Vlns.

The musical score for page 29 features the following instruments and notation:

- El. B. (Electric Bass):** The first staff shows a melodic line with eighth and quarter notes, including a half-note rest.
- El. B. (Electric Bass):** The second staff contains a whole-note rest.
- D. Set (Drum Set):** The third staff shows a complex rhythmic pattern with various note values, including eighth and sixteenth notes, and rests.
- El. Guit. (Electric Guitar):** The fourth staff features a melodic line with eighth and quarter notes, including a half-note rest.
- Tba. (Trombone):** The fifth staff contains a whole-note rest.
- Tba. (Trombone):** The sixth staff contains a whole-note rest.
- Synth. (Synthesizer):** The seventh staff contains a whole-note rest.
- Synth. (Synthesizer):** The eighth staff contains a whole-note rest.
- El. Guit. (Electric Guitar):** The ninth staff contains a whole-note rest.
- El. Guit. (Electric Guitar):** The tenth staff contains a whole-note rest.
- Vlns. (Violins):** The eleventh staff contains a whole-note rest.

El. B.

El. B.

D. Set

El. Guit.

Tba.

Tba.

Synth.

Synth.

El. Guit.

El. Guit.

Vlns.

The musical score for page 30 features the following instruments and notation:

- El. B. (Electric Bass):** Two staves. The first staff contains a melodic line with eighth and quarter notes, including a triplet. The second staff contains a single quarter rest.
- D. Set (Drum Set):** Two staves. The top staff uses a standard drum notation with 'x' marks for cymbals and numbers 7 and 7 indicating specific patterns. The bottom staff contains a single quarter rest.
- El. Guit. (Electric Guitar):** One staff. It features a complex melodic line with eighth and quarter notes, including a triplet and a long, sweeping line that spans across the staff.
- Tba. (Tuba):** Two staves. Both staves contain a single quarter rest.
- Synth. (Synthesizer):** Two staves. The top staff contains a single quarter rest. The bottom staff contains a single quarter rest.
- El. Guit. (Electric Guitar):** Two staves. Both staves contain a single quarter rest.
- Vlns. (Violins):** One staff. It contains a single quarter rest.

31

El. B.

El. B.

D. Set

El. Guit.

Tba.

Tba.

Synth.

Synth.

El. Guit.

El. Guit.

Vlns.

The musical score for page 31 features the following instruments and notation:

- El. B. (Electric Bass):** Two staves. The first staff has a few notes in the first measure, while the second staff is mostly silent with a few notes in the first measure.
- D. Set (Drum Set):** A single staff with a complex rhythmic pattern, including eighth and sixteenth notes, and rests.
- El. Guit. (Electric Guitar):** A single staff with a complex melodic line, including eighth and sixteenth notes, and rests.
- Tba. (Tuba):** Two staves. Both staves are mostly silent with a few notes in the first measure.
- Synth. (Synthesizer):** A single staff with a few notes in the first measure.
- Synth. (Synthesizer):** A pair of staves (treble and bass clef) with a few notes in the first measure.
- El. Guit. (Electric Guitar):** A single staff with a few notes in the first measure.
- El. Guit. (Electric Guitar):** A single staff with a few notes in the first measure.
- Vlns. (Violins):** A single staff with a few notes in the first measure.

32

El. B.

El. B.

D. Set

El. Guit.

Tba.

Tba.

Synth.

Synth.

El. Guit.

El. Guit.

Vlns.

Detailed description: This musical score page, numbered 32, contains ten staves. The first two staves are for Electric Bass (El. B.) in bass clef. The third staff is for Drums (D. Set) in a standard drum notation. The fourth staff is for Electric Guitar (El. Guit.) in treble clef, featuring a complex melodic line with a triplet of eighth notes. The fifth staff is for Trombone (Tba.) in bass clef, showing a triplet of eighth notes. The sixth staff is another Trombone (Tba.) in bass clef. The seventh staff is for Synthesizer (Synth.) in bass clef. The eighth and ninth staves are for Synthesizer (Synth.) in treble clef, grouped by a brace. The tenth staff is for Violins (Vlns.) in treble clef. The score includes various musical notations such as eighth notes, quarter notes, and rests, with some measures containing a '7' indicating a seven-measure rest.

33

El. B.

El. B.

D. Set

El. Guit.

Tba.

Tba.

Synth.

Synth.

El. Guit.

El. Guit.

Vlns.

The musical score for page 33 consists of eleven staves. The first two staves are for Electric Bass (El. B.). The third staff is for Drums (D. Set), featuring a complex rhythmic pattern with eighth and sixteenth notes, and rests. The fourth staff is for Electric Guitar (El. Guit.), showing a melodic line with a triplet of eighth notes and a long sustain. The fifth staff is for Trombone (Tba.), with a few notes and rests. The sixth staff is for Trombone (Tba.), which is empty. The seventh staff is for Synthesizer (Synth.), which is empty. The eighth and ninth staves are for Synthesizer (Synth.), which are empty. The tenth staff is for Electric Guitar (El. Guit.), which is empty. The eleventh staff is for Violins (Vlns.), which is empty.

El. B.

El. B.

D. Set

El. Guit.

Tba.

Tba.

Synth.

Synth.

El. Guit.

El. Guit.

Vlns.

The musical score for page 34 features ten staves. The first staff (El. B.) contains a melodic line in bass clef with eighth and quarter notes, some beamed together. The second staff (El. B.) is empty. The third staff (D. Set) shows a complex rhythmic pattern with eighth and sixteenth notes, some marked with 'x' and '7'. The fourth staff (El. Guit.) features a melodic line in treble clef with eighth and quarter notes, some beamed together, and a triplet of eighth notes. The fifth staff (Tba.) contains a melodic line in bass clef with eighth and quarter notes, some beamed together. The sixth staff (Tba.) is empty. The seventh staff (Synth.) is empty. The eighth staff (Synth.) is empty. The ninth staff (El. Guit.) is empty. The tenth staff (El. Guit.) is empty. The eleventh staff (Vlns.) is empty.

35

El. B.

El. B.

D. Set

El. Guit.

Tba.

Tba.

Synth.

Synth.

El. Guit.

El. Guit.

Vlns.

The musical score for page 35 consists of ten staves. The first two staves are for Electric Bass (El. B.). The third staff is for Double Bass (D. Set). The fourth staff is for Electric Guitar (El. Guit.), featuring a complex melodic line with a triplet of eighth notes and a long sustain. The fifth staff is for Trombone (Tba.), featuring a triplet of eighth notes. The sixth staff is for Trombone (Tba.). The seventh staff is for Synthesizer (Synth.). The eighth staff is for Synthesizer (Synth.), consisting of two staves. The ninth staff is for Electric Guitar (El. Guit.). The tenth staff is for Electric Guitar (El. Guit.). The eleventh staff is for Violins (Vlns.).

El. B.

El. B.

D. Set

El. Guit.

Tba.

Tba.

Synth.

Synth.

El. Guit.

El. Guit.

Vlns.

The musical score for page 36 features the following instruments and notation:

- El. B. (Electric Bass):** Two staves. The first staff has a few notes in the first measure, while the second staff is mostly empty.
- D. Set (Drum Set):** A single staff with a complex rhythmic pattern, including eighth and sixteenth notes, and rests.
- El. Guit. (Electric Guitar):** A single staff with a melodic line, including a triplet of eighth notes in the first measure.
- Tba. (Tuba):** Two staves. The first staff has a few notes, while the second staff is mostly empty.
- Synth. (Synthesizer):** A single staff with a few notes, including a triplet of eighth notes in the first measure.
- Synth. (Synthesizer):** A pair of staves (stereo) with a few notes, including a triplet of eighth notes in the first measure.
- El. Guit. (Electric Guitar):** A single staff with a few notes, including a triplet of eighth notes in the first measure.
- El. Guit. (Electric Guitar):** A single staff with a few notes, including a triplet of eighth notes in the first measure.
- Vlns. (Violins):** A single staff with a few notes, including a triplet of eighth notes in the first measure.

37

El. B.

El. B.

D. Set

El. Guit.

Tba.

Tba.

Synth.

Synth.

El. Guit.

El. Guit.

Vlns.

The musical score for page 37 features the following instruments and notation:

- El. B. (Electric Bass):** Two staves. The first staff contains a melodic line with eighth and quarter notes, including a triplet. The second staff is mostly empty with a few rests.
- D. Set (Drum Set):** Two staves. The top staff shows a complex drum pattern with various note values and rests. The bottom staff shows a simpler pattern.
- El. Guit. (Electric Guitar):** One staff. It features a melodic line with eighth and quarter notes, including a triplet.
- Tba. (Tuba):** Two staves. The first staff contains a melodic line with eighth and quarter notes, including a triplet. The second staff is mostly empty with a few rests.
- Synth. (Synthesizer):** Two staves. Both staves are mostly empty with a few rests.
- El. Guit. (Electric Guitar):** Two staves. Both staves are mostly empty with a few rests.
- Vlns. (Violins):** One staff. It is mostly empty with a few rests.

El. B.

El. B.

D. Set

El. Guit.

Tba.

Tba.

Synth.

Synth.

El. Guit.

El. Guit.

Vlns.

The musical score for page 38 features ten staves. The first staff (El. B.) contains a melodic line with eighth and quarter notes. The second staff (El. B.) is mostly empty with a few rests. The third staff (D. Set) features a complex rhythmic pattern with eighth and sixteenth notes, including triplet markings. The fourth staff (El. Guit.) shows a melodic line with eighth notes and a triplet. The fifth staff (Tba.) contains a melodic line with eighth notes and a triplet. The sixth staff (Tba.) is mostly empty with a few rests. The seventh staff (Synth.) is mostly empty with a few rests. The eighth staff (Synth.) consists of two staves, both mostly empty with a few rests. The ninth staff (El. Guit.) is mostly empty with a few rests. The tenth staff (El. Guit.) is mostly empty with a few rests. The eleventh staff (Vlns.) is mostly empty with a few rests.

El. B.

El. B.

D. Set

El. Guit.

Tba.

Tba.

Synth.

Synth.

El. Guit.

El. Guit.

Vlns.

The musical score for page 39 consists of ten staves. The first two staves are for Electric Bass (El. B.) in bass clef. The third staff is for Drums (D. Set) in bass clef, featuring a complex rhythmic pattern with eighth and sixteenth notes, and rests. The fourth staff is for Electric Guitar (El. Guit.) in treble clef, featuring a melodic line with eighth and sixteenth notes, and a triplet of eighth notes. The fifth staff is for Trombone (Tba.) in bass clef, featuring a melodic line with eighth and sixteenth notes, and a triplet of eighth notes. The sixth staff is for Trombone (Tba.) in bass clef, featuring a melodic line with eighth and sixteenth notes, and a triplet of eighth notes. The seventh staff is for Synthesizer (Synth.) in bass clef, featuring a melodic line with eighth and sixteenth notes, and a triplet of eighth notes. The eighth staff is for Synthesizer (Synth.) in treble clef, featuring a melodic line with eighth and sixteenth notes, and a triplet of eighth notes. The ninth staff is for Electric Guitar (El. Guit.) in treble clef, featuring a melodic line with eighth and sixteenth notes, and a triplet of eighth notes. The tenth staff is for Electric Guitar (El. Guit.) in treble clef, featuring a melodic line with eighth and sixteenth notes, and a triplet of eighth notes. The eleventh staff is for Violins (Vlns.) in treble clef, featuring a melodic line with eighth and sixteenth notes, and a triplet of eighth notes.

El. B.

El. B.

D. Set

El. Guit.

Tba.

Tba.

Synth.

Synth.

El. Guit.

El. Guit.

Vlns.

The musical score for page 40 features the following instruments and notation:

- El. B. (Electric Bass):** Two staves. The first staff has a quarter note, a quarter rest, and a half note. The second staff has a whole rest.
- D. Set (Drums):** A single staff with a complex rhythmic pattern including eighth notes, quarter notes, and rests, with some notes marked with 'x'.
- El. Guit. (Electric Guitar):** A single staff with a melodic line featuring eighth notes, quarter notes, and a triplet of eighth notes.
- Tba. (Trombone):** Two staves. The first staff has a quarter note, a quarter rest, and a half note. The second staff has a whole rest.
- Synth. (Synthesizer):** A single staff with a whole rest.
- Synth. (Synthesizer):** A grand staff (two staves) with whole rests on both staves.
- El. Guit. (Electric Guitar):** A single staff with a whole rest.
- El. Guit. (Electric Guitar):** A single staff with a whole rest.
- Vlns. (Violins):** A single staff with a whole rest.

41

El. B.

El. B.

D. Set

El. Guit.

Tba.

Tba.

Synth.

Synth.

El. Guit.

El. Guit.

Vlns.

The musical score for page 41 features ten staves. The first two staves are for Electric Bass (El. B.), the third for Double Bass (D. Set), the fourth for Electric Guitar (El. Guit.), the fifth and sixth for Trombone (Tba.), the seventh for Synthesizer (Synth.), the eighth and ninth for two Electric Guitars (El. Guit.), and the tenth for Violins (Vlns.). The D. Set staff contains a complex rhythmic pattern with eighth and sixteenth notes, some marked with 'x' and 'z'. The El. B. staves have a few notes, including a slur over two notes in the first staff. The Tba. staves have a few notes, including a slur over two notes in the fifth staff. The Synth. staff has a long, sustained note. The El. Guit. staves have a few notes, including a slur over two notes in the eighth staff. The Vlns. staff has a few notes, including a slur over two notes in the tenth staff.

El. B.

El. B.

D. Set

El. Guit.

Tba.

Tba.

Synth.

Synth.

El. Guit.

El. Guit.

Vlns.

The musical score for page 42 features ten staves. The first two staves are for Electric Bass (El. B.). The third staff is for Drums (D. Set), showing a complex rhythmic pattern with eighth and sixteenth notes, and rests. The fourth staff is for Electric Guitar (El. Guit.), marked with an 8. The fifth staff is for Trombone (Tba.), showing a melodic line. The sixth staff is for Trombone (Tba.), marked with an 8. The seventh staff is for Synthesizer (Synth.), marked with an 8. The eighth staff is for Synthesizer (Synth.), marked with an 8. The ninth staff is for Electric Guitar (El. Guit.), marked with an 8. The tenth staff is for Electric Guitar (El. Guit.), marked with an 8. The eleventh staff is for Violins (Vlns.), marked with an 8.

43

El. B.

El. B.

D. Set

El. Guit.

Tba.

Tba.

Synth.

Synth.

El. Guit.

El. Guit.

Vlns.

The musical score for page 43 features the following instruments and parts:

- El. B. (Electric Bass):** The first staff shows a melodic line starting with a quarter note, followed by a half note tied to the next measure, and ending with a quarter rest. The second staff is empty.
- D. Set (Drum Set):** The top staff shows a complex rhythmic pattern with eighth and sixteenth notes, including some notes with 'x' marks. The bottom staff shows a simpler pattern with quarter and eighth notes.
- El. Guit. (Electric Guitar):** The first staff is empty. The second staff shows a single eighth note.
- Tba. (Tuba):** Both staves are empty.
- Synth. (Synthesizer):** The first staff shows a sustained note with a crescendo hairpin. The second staff is empty.
- Synth. (Synthesizer):** Both staves are empty.
- El. Guit. (Electric Guitar):** Both staves are empty.
- Vlns. (Violins):** The staff is empty.

El. B.

El. B.

D. Set

El. Guit.

Tba.

Tba.

Synth.

Synth.

El. Guit.

El. Guit.

Vlns.

Detailed description: This musical score page, numbered 44, contains measures 44 and 45. The score is arranged in a system of 11 staves. The first staff (El. B.) features a melodic line in measure 44, consisting of a dotted quarter note, followed by a half note, and then a quarter note. The second staff (El. B.) is empty. The third staff (D. Set) shows a complex rhythmic pattern with eighth and sixteenth notes, including some notes with 'x' marks. The fourth staff (El. Guit.) has a whole rest. The fifth staff (Tba.) has a whole rest. The sixth staff (Tba.) has a whole rest. The seventh staff (Synth.) has a whole rest. The eighth and ninth staves (Synth.) are grouped with a brace and have whole rests. The tenth staff (El. Guit.) has a whole rest. The eleventh staff (El. Guit.) has a whole rest. The twelfth staff (Vlns.) has a whole rest. The page number '44' is printed at the top left and above the first staff.

45

El. B.

El. B.

D. Set

El. Guit.

Tba.

Tba.

Synth.

Synth.

El. Guit.

El. Guit.

Vlns.

Detailed description: This musical score page, numbered 45, contains ten staves. The first staff (El. B.) has a bass clef and contains a dotted quarter note, a half note tied to the next, and a quarter rest. The second staff (El. B.) has a bass clef and contains a whole rest. The third staff (D. Set) has a double bar line at the start and contains a series of eighth and sixteenth notes with various articulations and slurs, including two measures marked with a '7'. The fourth staff (El. Guit.) has a treble clef and contains a whole rest with an '8' below it. The fifth staff (Tba.) has a bass clef and contains a quarter rest, a quarter note, a half note tied to the next, and a quarter note. The sixth staff (Tba.) has a bass clef and contains a whole rest. The seventh staff (Synth.) has a bass clef and contains a whole note with a long, curved line above it. The eighth staff (Synth.) consists of two treble clef staves grouped by a brace, both containing whole rests. The ninth staff (El. Guit.) has a treble clef and contains a whole rest with an '8' below it. The tenth staff (El. Guit.) has a treble clef and contains a whole rest with an '8' below it. The eleventh staff (Vlns.) has a treble clef and contains a whole rest.

El. B.

El. B.

D. Set

El. Guit.

Tba.

Tba.

Synth.

Synth.

El. Guit.

El. Guit.

Vlns.

The musical score for page 46 consists of eleven staves. The first two staves are for Electric Bass (El. B.). The third staff is for Drums (D. Set), showing a complex rhythmic pattern with eighth and sixteenth notes, and rests. The fourth staff is for Electric Guitar (El. Guit.), marked with an 8. The fifth staff is for Trombone (Tba.), showing a melodic line with eighth and sixteenth notes. The sixth staff is another Trombone (Tba.) part, mostly resting. The seventh staff is for Synthesizer (Synth.), showing a sustained note. The eighth and ninth staves are for another Synthesizer (Synth.), marked with an 8. The tenth staff is for Electric Guitar (El. Guit.), marked with an 8. The eleventh staff is for Violins (Vlns.), marked with an 8. The score is written in a single system, with measures 46 and 47 visible.

47

El. B.

El. B.

D. Set

El. Guit.

Tba.

Tba.

Synth.

Synth.

El. Guit.

El. Guit.

Vlns.

The musical score for page 47 consists of ten staves. The first two staves are for Electric Bass (El. B.). The third staff is for Drums (D. Set), featuring a complex rhythmic pattern with triplets and sixteenth notes. The fourth staff is for Electric Guitar (El. Guit.), which is mostly silent. The fifth staff is for Trombone (Tba.), with a few notes in the first measure. The sixth staff is another Trombone (Tba.) part, also mostly silent. The seventh staff is for Synthesizer (Synth.), with a few notes in the first measure. The eighth staff is for another Synthesizer (Synth.), with a few notes in the first measure. The ninth staff is for Electric Guitar (El. Guit.), with a few notes in the first measure. The tenth staff is for Violins (Vlns.), with a few notes in the first measure.

El. B.

El. B.

D. Set

El. Guit.

Tba.

Tba.

Synth.

Synth.

El. Guit.

El. Guit.

Vlins.

The musical score for page 49 is arranged in a multi-staff format. The instruments and their parts are as follows:

- El. B. (Electric Bass):** The first staff shows a melodic line in the bass clef, starting with a dotted quarter note, followed by eighth notes, and ending with a half note. The second staff is empty.
- D. Set (Drums):** The third staff shows a drum part with a snare drum (indicated by an 'x') and a bass drum (indicated by a vertical line). The part is divided into two measures, each containing a series of eighth notes.
- El. Guit. (Electric Guitar):** The fourth staff is empty.
- Tba. (Trombone):** The fifth and sixth staves are empty.
- Synth. (Synthesizer):** The seventh and eighth staves are empty.
- El. Guit. (Electric Guitar):** The ninth staff shows a melodic line in the treble clef, starting with a dotted quarter note, followed by eighth notes, and ending with a half note. The tenth staff is empty.
- Vlins. (Violins):** The eleventh staff shows a melodic line in the treble clef, starting with a dotted quarter note, followed by eighth notes, and ending with a half note.

51

El. B.

El. B.

D. Set

El. Guit.

Tba.

Tba.

Synth.

Synth.

El. Guit.

El. Guit.

Vlins.

The musical score for page 51 consists of ten staves. The first staff (El. B.) features a melodic line in the bass clef. The second staff (El. B.) is empty. The third staff (D. Set) shows a drum pattern with eighth notes and rests, with a '5' indicating a five-measure rest. The fourth staff (El. Guit.) is empty. The fifth staff (Tba.) is empty. The sixth staff (Tba.) is empty. The seventh staff (Synth.) is empty. The eighth staff (Synth.) is empty. The ninth staff (El. Guit.) features a melodic line in the treble clef. The tenth staff (El. Guit.) is empty. The eleventh staff (Vlins.) features a melodic line in the treble clef.

53

El. B.

El. B.

D. Set

El. Guit.

Tba.

Tba.

Synth.

Synth.

El. Guit.

El. Guit.

Vlins.

55

El. B.

El. B.

D. Set

El. Guit.

Tba.

Tba.

Synth.

Synth.

El. Guit.

El. Guit.

Vlins.

The musical score for page 55 consists of ten staves. The first staff (El. B.) features a melodic line in the bass clef. The second staff (El. B.) is empty. The third staff (D. Set) shows a drum pattern with eighth notes and rests, including a 5-measure phrase and a 7-measure phrase. The fourth staff (El. Guit.) is empty. The fifth staff (Tba.) is empty. The sixth staff (Tba.) is empty. The seventh staff (Synth.) is empty. The eighth staff (Synth.) is empty. The ninth staff (El. Guit.) features a melodic line in the treble clef. The tenth staff (El. Guit.) is empty. The eleventh staff (Vlins.) features a melodic line in the treble clef.

El. B.

El. B.

D. Set

El. Guit.

Tba.

Tba.

Synth.

Synth.

El. Guit.

El. Guit.

Vlins.

The musical score for page 57 consists of ten staves. The first two staves are for Electric Bass (El. B.), each with a whole rest in both measures. The third staff is for Drums (D. Set), featuring a complex rhythmic pattern with eighth and sixteenth notes, including triplets and rests. The fourth staff is for Electric Guitar (El. Guit.), with a whole rest. The fifth and sixth staves are for Trombone (Tba.), each with a whole rest. The seventh staff is for Synthesizer (Synth.), with a whole rest. The eighth staff is for Synthesizer (Synth.), with a rapid sixteenth-note arpeggiated pattern in the first measure and a whole rest in the second. The ninth staff is for Electric Guitar (El. Guit.), with a whole rest. The tenth staff is for Violins (Vlins.), featuring a melodic line with slurs and ties across measures.

59

El. B.

El. B.

D. Set

El. Guit.

Tba.

Tba.

Synth.

Synth.

El. Guit.

El. Guit.

Vlns.

The musical score for page 59 consists of ten staves. The first two staves are for El. B. (Electric Bass), both in bass clef. The third staff is for D. Set (Drum Set) in treble clef, featuring a complex rhythmic pattern with eighth and sixteenth notes, including triplets and rests. The fourth staff is for El. Guit. (Electric Guitar) in treble clef, showing a single eighth note. The fifth and sixth staves are for Tba. (Tuba) in bass clef, both showing rests. The seventh staff is for Synth. (Synthesizer) in bass clef, showing a rest. The eighth and ninth staves are for Synth. (Synthesizer) in treble clef, with the eighth staff showing a rapid sixteenth-note run and the ninth staff showing a rest. The tenth staff is for El. Guit. (Electric Guitar) in treble clef, showing a chord. The eleventh staff is for Vlns. (Violins) in treble clef, showing a melodic line with slurs and ties.

El. B.

El. B.

D. Set

El. Guit.

Tba.

Tba.

Synth.

Synth.

El. Guit.

El. Guit.

Vlins.

The musical score for page 61 consists of ten staves. The first two staves are for El. B. (Electric Bass), both in bass clef. The third staff is for D. Set (Drum Set) in treble clef, featuring a complex rhythmic pattern with eighth and sixteenth notes, including triplets and rests. The fourth staff is for El. Guit. (Electric Guitar) in treble clef, showing a single eighth note. The fifth and sixth staves are for Tba. (Tuba) in bass clef, both showing a single eighth note. The seventh staff is for Synth. (Synthesizer) in bass clef, showing a single eighth note. The eighth staff is for Synth. (Synthesizer) in treble clef, showing a rapid sixteenth-note arpeggiated pattern. The ninth staff is for El. Guit. (Electric Guitar) in treble clef, showing a single eighth note. The tenth staff is for Vlins. (Violins) in treble clef, showing a melodic line with eighth notes and rests.

63

El. B.

El. B.

D. Set

El. Guit.

Tba.

Tba.

Synth.

Synth.

El. Guit.

El. Guit.

Vlins.

Detailed description: This musical score page contains measures 63 and 64. The instruments and their parts are as follows:
- **El. B. (Electric Bass):** Measure 63 has a whole note G2. Measure 64 has a quarter note G2, an eighth note F2, a quarter note E2, and a quarter note D2.
- **El. B. (Electric Bass):** Both measures 63 and 64 have whole rests.
- **D. Set (Drum Set):** Measure 63 has a snare drum on G4, a hi-hat on A4, and a kick drum on G2. Measure 64 has a snare drum on G4, a hi-hat on A4, and a kick drum on G2.
- **El. Guit. (Electric Guitar):** Measure 63 has a whole rest. Measure 64 has a whole rest.
- **Tba. (Tuba):** Both measures 63 and 64 have whole rests.
- **Tba. (Tuba):** Both measures 63 and 64 have whole rests.
- **Synth. (Synthesizer):** Both measures 63 and 64 have whole rests.
- **Synth. (Synthesizer):** Measure 63 has a continuous eighth-note pattern on G4, A4, B4, and C5. Measure 64 has a whole rest.
- **El. Guit. (Electric Guitar):** Measure 63 has a whole rest. Measure 64 has a whole rest.
- **El. Guit. (Electric Guitar):** Measure 63 has a whole rest. Measure 64 has a whole rest.
- **Vlins. (Violins):** Measure 63 has a whole note G4. Measure 64 has a whole note G4.

65

El. B.

El. B.

D. Set

El. Guit.

Tba.

Tba.

Synth.

Synth.

El. Guit.

El. Guit.

Vlns.

66

El. B.

El. B.

D. Set

El. Guit.

Tba.

Tba.

Synth.

Synth.

El. Guit.

El. Guit.

Vlns.

The musical score for system 66 on page 57 features the following instruments and notation:

- El. B. (Electric Bass):** The first staff shows a melodic line with eighth and quarter notes, including a triplet of eighth notes.
- El. B. (Electric Bass):** The second staff is mostly empty, with a few notes in the first measure.
- D. Set (Drum Set):** The third staff shows a complex rhythmic pattern with various drum sounds and articulation marks.
- El. Guit. (Electric Guitar):** The fourth staff shows a melodic line with eighth and quarter notes, including a triplet of eighth notes.
- Tba. (Tuba):** The fifth staff is mostly empty, with a few notes in the first measure.
- Tba. (Tuba):** The sixth staff is mostly empty, with a few notes in the first measure.
- Synth. (Synthesizer):** The seventh staff is mostly empty, with a few notes in the first measure.
- Synth. (Synthesizer):** The eighth staff shows a melodic line with eighth and quarter notes, including a triplet of eighth notes.
- El. Guit. (Electric Guitar):** The ninth staff is mostly empty, with a few notes in the first measure.
- El. Guit. (Electric Guitar):** The tenth staff is mostly empty, with a few notes in the first measure.
- Vlns. (Violins):** The eleventh staff shows a melodic line with eighth and quarter notes, including a triplet of eighth notes.

El. B.

El. B.

D. Set

El. Guit.

Tba.

Tba.

Synth.

Synth.

El. Guit.

El. Guit.

Vlns.

68

El. B.

El. B.

D. Set

El. Guit.

Tba.

Tba.

Synth.

Synth.

El. Guit.

El. Guit.

Vlns.

69

El. B.

El. B.

D. Set

El. Guit.

Tba.

Tba.

Synth.

Synth.

El. Guit.

El. Guit.

Vlns.

The musical score for page 69 consists of ten staves. The first staff (El. B.) contains a bass line with eighth and quarter notes. The second staff (El. B.) is empty. The third staff (D. Set) shows a drum pattern with eighth and quarter notes. The fourth staff (El. Guit.) features a complex guitar part with eighth and quarter notes. The fifth staff (Tba.) has a triplet of eighth notes. The sixth staff (Tba.) is empty. The seventh staff (Synth.) is empty. The eighth staff (Synth.) is empty. The ninth staff (El. Guit.) is empty. The tenth staff (El. Guit.) is empty. The eleventh staff (Vlns.) is empty.

70

El. B.

El. B.

D. Set

El. Guit.

Tba.

Tba.

Synth.

Synth.

El. Guit.

El. Guit.

Vlns.

The musical score for page 61, measure 70, is presented. The score includes staves for El. B., D. Set, El. Guit., Tba., Synth., and Vlns. The El. Guit. staff features a complex melodic line with a triplet and a long sustain. The D. Set staff features a complex rhythmic pattern with a 7-measure rest. The El. B. staff features a complex melodic line with a 7-measure rest. The Tba. staff features a complex melodic line with a 3-measure rest. The Synth. staff features a complex melodic line with a long sustain. The Vlns. staff features a complex melodic line with a long sustain.

71

El. B.

El. B.

D. Set

El. Guit.

Tba.

Tba.

Synth.

Synth.

El. Guit.

El. Guit.

Vlns.

72

This musical score page contains measures 72 and 73 for a multi-instrument ensemble. The instruments and their parts are as follows:

- El. B. (Electric Bass):** Two staves. The first staff has a single eighth note in measure 72 and a quarter note in measure 73. The second staff is silent.
- D. Set (Drum Set):** A single staff showing a complex rhythmic pattern with various note values and rests across both measures.
- El. Guit. (Electric Guitar):** A single staff. Measure 72 features a complex chordal structure with a '7' (seventh) fret marking. Measure 73 continues this with a triplet of eighth notes marked with a '3'.
- Tba. (Tuba):** Two staves. The first staff has a whole rest in measure 72 and a half note in measure 73. The second staff is silent.
- Synth. (Synthesizer):** A single staff with a whole rest in measure 72 and a half note in measure 73.
- Synth. (Synthesizer):** A pair of staves (treble and bass clef) with whole rests in both measures.
- El. Guit. (Electric Guitar):** A single staff with a whole rest in measure 72 and a half note in measure 73.
- El. Guit. (Electric Guitar):** A single staff with a whole rest in measure 72 and a half note in measure 73.
- Vlns. (Violins):** A single staff with a whole rest in measure 72 and a half note in measure 73.

73

El. B.

El. B.

D. Set

El. Guit.

Tba.

Tba.

Synth.

Synth.

El. Guit.

El. Guit.

Vlns.

The musical score for page 64, measure 73, features the following instruments and parts:

- El. B. (Electric Bass):** Two staves. The top staff has a melodic line starting with a quarter note, followed by a half note, and then a quarter note. The bottom staff is mostly empty.
- D. Set (Drum Set):** Two staves. The top staff shows a complex rhythmic pattern with various note values and rests. The bottom staff is mostly empty.
- El. Guit. (Electric Guitar):** Two staves. The top staff has a melodic line with a triplet of eighth notes and a long sustain. The bottom staff is mostly empty.
- Tba. (Tuba):** Two staves. The top staff has a melodic line starting with a quarter note, followed by a half note, and then a quarter note. The bottom staff is mostly empty.
- Synth. (Synthesizer):** Two staves. The top staff has a melodic line starting with a quarter note, followed by a half note, and then a quarter note. The bottom staff is mostly empty.
- Vlns. (Violins):** One staff. The staff is mostly empty.

74

El. B.

El. B.

D. Set

El. Guit.

Tba.

Tba.

Synth.

Synth.

El. Guit.

El. Guit.

Vlns.

Detailed description: This musical score page contains measures 74 and 75. Measure 74 features a bass line in the first Electric Bass (El. B.) part with eighth notes and rests. The Drum Set (D. Set) plays a complex pattern with eighth and sixteenth notes, including triplets and a 7-measure rest. The Electric Guitar (El. Guit.) has a melodic line with eighth notes and a triplet. The Trombone (Tba.) part has a few notes and rests. Measure 75 shows the continuation of these parts, with the El. B. part having a 7-measure rest, the D. Set continuing its pattern, the El. Guit. playing sustained chords, and the Tba. part having a 3-measure rest. The Synth. parts and the second El. Guit. and Vlns. parts are mostly silent in these measures.

El. B.

El. B.

D. Set

El. Guit.

Tba.

Tba.

Synth.

Synth.

El. Guit.

El. Guit.

Vlns.

The musical score for page 75 features ten staves. The first two staves are for Electric Bass (El. B.). The third staff is for Drums (D. Set), showing a complex rhythmic pattern with eighth and sixteenth notes, and rests. The fourth staff is for Electric Guitar (El. Guit.), featuring a melodic line with eighth notes and a triplet of eighth notes. The fifth staff is for Trombone (Tba.), showing a melodic line with eighth notes and a triplet of eighth notes. The sixth staff is for Trombone (Tba.), which is empty. The seventh staff is for Synthesizer (Synth.), which is empty. The eighth staff is for Synthesizer (Synth.), showing a melodic line with eighth notes and a triplet of eighth notes. The ninth staff is for Electric Guitar (El. Guit.), which is empty. The tenth staff is for Electric Guitar (El. Guit.), which is empty. The eleventh staff is for Violins (Vlns.), which is empty.

76

El. B.

El. B.

D. Set

El. Guit.

Tba.

Tba.

Synth.

Synth.

El. Guit.

El. Guit.

Vlns.

77

El. B.

El. B.

D. Set

El. Guit.

Tba.

Tba.

Synth.

Synth.

El. Guit.

El. Guit.

Vlns.

78

El. B.

El. B.

D. Set

El. Guit.

Tba.

Tba.

Synth.

Synth.

El. Guit.

El. Guit.

Vlns.

Detailed description: This page contains musical notation for measures 78 and 79. The score is arranged in a system with ten staves. The first staff (El. B.) has a bass clef and contains a melodic line with eighth and quarter notes. The second staff (El. B.) is empty. The third staff (D. Set) has a double bar line and contains a complex rhythmic pattern with eighth and sixteenth notes, including triplets. The fourth staff (El. Guit.) has a treble clef and contains a melodic line with eighth and quarter notes, including a triplet. The fifth staff (Tba.) has a bass clef and contains a melodic line with eighth and quarter notes, including a triplet. The sixth staff (Tba.) is empty. The seventh staff (Synth.) is empty. The eighth staff (Synth.) has a treble clef and contains a melodic line with eighth and quarter notes, including a triplet. The ninth staff (El. Guit.) is empty. The tenth staff (El. Guit.) is empty. The eleventh staff (Vlns.) is empty.

El. B.

El. B.

D. Set

El. Guit.

Tba.

Tba.

Synth.

Synth.

El. Guit.

El. Guit.

Vlns.

The musical score for page 79 features ten staves. The first two staves are for Electric Bass (El. B.). The third staff is for Drums (D. Set), showing a complex rhythmic pattern with eighth and sixteenth notes, and rests. The fourth staff is for Electric Guitar (El. Guit.), featuring a melodic line with eighth notes and a triplet of eighth notes. The fifth staff is for Trombone (Tba.), showing a melodic line with eighth notes. The sixth staff is for Trombone (Tba.), showing a melodic line with eighth notes. The seventh staff is for Synthesizer (Synth.), showing a melodic line with eighth notes. The eighth staff is for Synthesizer (Synth.), showing a melodic line with eighth notes. The ninth staff is for Electric Guitar (El. Guit.), showing a melodic line with eighth notes. The tenth staff is for Electric Guitar (El. Guit.), showing a melodic line with eighth notes. The eleventh staff is for Violins (Vlns.), showing a melodic line with eighth notes.

80

El. B.

El. B.

D. Set

El. Guit.

Tba.

Tba.

Synth.

Synth.

El. Guit.

El. Guit.

Vlns.

The musical score for page 80 features the following instruments and parts:

- El. B. (Electric Bass):** Two staves. The first staff has a single note in the first measure, a rest in the second, and a half note in the third. The second staff has a whole rest in the first measure and a whole note in the second.
- D. Set (Drums):** A single staff with a complex rhythmic pattern including eighth and sixteenth notes, rests, and a triplet of eighth notes in the second measure.
- El. Guit. (Electric Guitar):** A single staff with a melodic line featuring eighth and sixteenth notes, a triplet of eighth notes in the second measure, and a half note in the third.
- Tba. (Trombone):** Two staves. The first staff has a whole note in the first measure and a whole rest in the second. The second staff has a whole rest in the first measure and a whole note in the second.
- Synth. (Synthesizer):** Two staves. The first staff has a whole note in the first measure and a whole rest in the second. The second staff has a whole rest in the first measure and a whole note in the second.
- El. Guit. (Electric Guitar):** Two staves. Both staves have a whole rest in the first measure and a whole note in the second.
- Vlns. (Violins):** A single staff with a whole rest in the first measure and a whole note in the second.

El. B.

El. B.

D. Set

El. Guit.

Tba.

Tba.

Synth.

Synth.

El. Guit.

El. Guit.

Vlns.

Detailed description: This musical score page, numbered 81, contains ten staves. The first staff (El. B.) has a bass clef and contains a dotted quarter note, a half note tied to the next, and a quarter rest. The second staff (El. B.) has a bass clef and contains a whole rest. The third staff (D. Set) has a double bar line at the start, followed by a series of eighth and sixteenth notes with 'x' marks above them, and a whole rest. The fourth staff (El. Guit.) has a treble clef and contains a whole rest. The fifth staff (Tba.) has a bass clef and contains a quarter rest, followed by a half note, a quarter note, and a half note tied to the next. The sixth staff (Tba.) has a bass clef and contains a whole rest. The seventh staff (Synth.) has a bass clef and contains a whole note with a long horizontal line above it. The eighth staff (Synth.) has a treble clef and contains a whole rest. The ninth staff (El. Guit.) has a treble clef and contains a whole rest. The tenth staff (El. Guit.) has a treble clef and contains a whole rest. The eleventh staff (Vlns.) has a treble clef and contains a whole rest.

82

El. B.

El. B.

D. Set

El. Guit.

Tba.

Tba.

Synth.

Synth.

El. Guit.

El. Guit.

Vlns.

Detailed description: This musical score page contains measures 82 and 83. Measure 82 features a double bass (El. B.) with a half note G2, a half note F2 tied to the next measure, and a quarter note E2. The double bass (Tba.) has a half note G2, a quarter rest, a half note F2, and a quarter note E2. The drum set (D. Set) has a bass drum on G2, a snare on F2, and a hi-hat on E2. The electric guitar (El. Guit.) has a half note G2, a half note F2, and a quarter note E2. The electric guitar (Tba.) has a half note G2, a quarter rest, a half note F2, and a quarter note E2. The electric guitar (Synth.) has a half note G2, a half note F2, and a quarter note E2. The electric guitar (El. Guit.) has a half note G2, a half note F2, and a quarter note E2. The electric guitar (Vlns.) has a half note G2, a half note F2, and a quarter note E2. Measure 83 features a double bass (El. B.) with a half note G2, a half note F2, and a quarter note E2. The double bass (Tba.) has a half note G2, a quarter rest, a half note F2, and a quarter note E2. The drum set (D. Set) has a bass drum on G2, a snare on F2, and a hi-hat on E2. The electric guitar (El. Guit.) has a half note G2, a half note F2, and a quarter note E2. The electric guitar (Tba.) has a half note G2, a quarter rest, a half note F2, and a quarter note E2. The electric guitar (Synth.) has a half note G2, a half note F2, and a quarter note E2. The electric guitar (El. Guit.) has a half note G2, a half note F2, and a quarter note E2. The electric guitar (Vlns.) has a half note G2, a half note F2, and a quarter note E2.

83

El. B.

El. B.

D. Set

El. Guit.

Tba.

Tba.

Synth.

Synth.

El. Guit.

El. Guit.

Vlns.

84

El. B.

El. B.

D. Set

El. Guit.

Tba.

Tba.

Synth.

Synth.

El. Guit.

El. Guit.

Vlns.

Detailed description: This musical score page contains measures 84 and 85. Measure 84 features a bass line in the first two staves (El. B.) and a complex drum set pattern in the third staff (D. Set). The drum set includes a kick drum, snare, and various cymbals, with some notes marked with 'x' for cymbals. Measure 85 shows a continuation of the bass line in the first two staves, while the drum set and other instruments (El. Guit., Tba., Synth., Vlns.) have rests. The score is written for a variety of instruments, including electric bass, drums, electric guitar, tuba, synthesizer, and violins.

El. B.

El. B.

D. Set

El. Guit.

Tba.

Tba.

Synth.

Synth.

El. Guit.

El. Guit.

Vlns.

Detailed description: This musical score page, numbered 85, features ten staves. The first two staves are for Electric Bass (El. B.), the third for Drums (D. Set), the fourth for Electric Guitar (El. Guit.), the fifth for Trombone (Tba.), the sixth for another Trombone (Tba.), the seventh for a Synthesizer (Synth.), the eighth and ninth for a pair of Synthesizers (Synth.), the tenth for another Electric Guitar (El. Guit.), the eleventh for another Electric Guitar (El. Guit.), and the twelfth for Violins (Vlns.). The Drums staff shows a complex rhythmic pattern with various note values and rests. The Electric Bass staves have a few notes and rests. The Electric Guitar staves have a few notes and rests. The Trombone staves have a few notes and rests. The Synthesizer staves have a few notes and rests. The Violins staff has a few notes and rests.

86

El. B.

El. B.

D. Set

El. Guit.

Tba.

Tba.

Synth.

Synth.

El. Guit.

El. Guit.

Vlns.

Detailed description: This musical score page, numbered 86, features ten staves. The first two staves are for Electric Bass (El. B.) in bass clef. The third staff is for Drums (D. Set) in a standard drum notation. The fourth staff is for Electric Guitar (El. Guit.) in treble clef, marked with an '8'. The fifth staff is for Trombone (Tba.) in bass clef. The sixth staff is another Trombone (Tba.) in bass clef. The seventh staff is for Synthesizer (Synth.) in bass clef, showing a sustained note. The eighth and ninth staves are for Synthesizer (Synth.) in treble clef, grouped by a brace. The tenth staff is for Electric Guitar (El. Guit.) in treble clef, marked with an '8'. The eleventh staff is for Violins (Vlns.) in treble clef, marked with an '8'. The score includes various musical notations such as eighth notes, quarter notes, and rests, with some measures containing 'x' marks.

El. B.

El. B.

D. Set

El. Guit.

Tba.

Tba.

Synth.

Synth.

El. Guit.

El. Guit.

Vlns.

The musical score for page 87 consists of ten staves. The first two staves are for Electric Bass (El. B.). The third staff is for Drums (D. Set), featuring a complex rhythmic pattern with eighth and sixteenth notes, including triplets and sixteenth-note runs. The fourth staff is for Electric Guitar (El. Guit.), which is mostly silent with a few notes in the second measure. The fifth staff is for Trombone (Tba.), with a few notes in the first measure. The sixth staff is for another Trombone (Tba.), which is silent. The seventh staff is for Synthesizer (Synth.), with a few notes in the first measure. The eighth staff is for another Synthesizer (Synth.), which is silent. The ninth staff is for Electric Guitar (El. Guit.), with a few notes in the second measure. The tenth staff is for Violins (Vlns.), with a few notes in the second measure.

89

El. B.

El. B.

D. Set

El. Guit.

Tba.

Tba.

Synth.

Synth.

El. Guit.

El. Guit.

Vlins.

The musical score for page 89 consists of ten staves. The first staff (El. B.) features a melodic line in the bass clef. The second staff (El. B.) is empty. The third staff (D. Set) shows a drum pattern with eighth notes and rests, with a '5' indicating a five-measure phrase. The fourth staff (El. Guit.) is empty. The fifth staff (Tba.) is empty. The sixth staff (Tba.) is empty. The seventh staff (Synth.) is empty. The eighth staff (Synth.) is empty. The ninth staff (El. Guit.) features a melodic line in the treble clef. The tenth staff (El. Guit.) is empty. The eleventh staff (Vlins.) features a melodic line in the treble clef.

El. B.

El. B.

D. Set

El. Guit.

Tba.

Tba.

Synth.

Synth.

El. Guit.

El. Guit.

Vlins.

The musical score for page 91 consists of ten staves. The first staff (El. B.) features a melodic line in the bass clef. The second staff (El. B.) is empty. The third staff (D. Set) shows a drum pattern with eighth notes and rests, with a '5' indicating a five-measure rest. The fourth staff (El. Guit.) is empty. The fifth staff (Tba.) is empty. The sixth staff (Tba.) is empty. The seventh staff (Synth.) is empty. The eighth staff (Synth.) is empty. The ninth staff (El. Guit.) features a melodic line in the treble clef. The tenth staff (El. Guit.) is empty. The eleventh staff (Vlins.) features a melodic line in the treble clef.

93

El. B.

El. B.

D. Set

El. Guit.

Tba.

Tba.

Synth.

Synth.

El. Guit.

El. Guit.

Vlins.

5

5

8

8

8

8

8

8

8

8

95

El. B.

El. B.

D. Set

El. Guit.

Tba.

Tba.

Synth.

Synth.

El. Guit.

El. Guit.

Vlins.

5

5

7

97

El. B.

El. B.

D. Set

El. Guit.

Tba.

Tba.

Synth.

Synth.

El. Guit.

El. Guit.

Vlins.

The musical score for page 97 consists of ten staves. The first two staves are for Electric Bass (El. B.), each with a whole rest in both measures. The third staff is for Drums (D. Set), featuring a complex rhythmic pattern with eighth and sixteenth notes, including triplets and a final triplet of eighth notes. The fourth staff is for Electric Guitar (El. Guit.), with a whole rest. The fifth and sixth staves are for Trombone (Tba.), each with a whole rest. The seventh staff is for Synthesizer (Synth.), with a whole rest. The eighth staff is for Synthesizer (Synth.), with a rapid sixteenth-note arpeggiated pattern in the first measure and a whole rest in the second. The ninth staff is for Electric Guitar (El. Guit.), with a whole rest. The tenth staff is for Violins (Vlins.), featuring a melodic line with a long slur spanning both measures, ending with a quarter note in the second measure.

El. B.

El. B.

D. Set

El. Guit.

Tba.

Tba.

Synth.

Synth.

El. Guit.

El. Guit.

Vlns.

The musical score for page 99 consists of ten staves. The first two staves are for El. B. (Electric Bass), both showing whole notes in the first measure and rests in the second. The third staff is for D. Set (Drum Set), featuring a complex rhythmic pattern with eighth and sixteenth notes, including triplets and a final triplet of eighth notes. The fourth staff is for El. Guit. (Electric Guitar), showing a whole note chord in the first measure and a whole rest in the second. The fifth and sixth staves are for Tba. (Tuba), both showing whole rests in both measures. The seventh staff is for Synth. (Synthesizer), showing a continuous eighth-note pattern in the first measure and a whole rest in the second. The eighth staff is for Synth. (Synthesizer), showing a whole rest in both measures. The ninth staff is for El. Guit. (Electric Guitar), showing a whole note chord in the first measure and a whole rest in the second. The tenth staff is for Vlns. (Violins), showing a melodic line with eighth notes and a final eighth-note triplet.

101

El. B.

El. B.

D. Set

El. Guit.

Tba.

Tba.

Synth.

Synth.

El. Guit.

El. Guit.

Vlins.

The musical score for page 101 consists of ten staves. The first two staves are for El. B. (Electric Bass), both in bass clef. The third staff is for D. Set (Drum Set) in treble clef, featuring a complex rhythmic pattern with eighth and sixteenth notes, including triplets and rests. The fourth staff is for El. Guit. (Electric Guitar) in treble clef, showing a single eighth note. The fifth and sixth staves are for Tba. (Tuba) in bass clef, both showing rests. The seventh staff is for Synth. (Synthesizer) in bass clef, showing a rest. The eighth and ninth staves are for Synth. (Synthesizer) in treble clef, with the eighth staff showing a rapid sixteenth-note run and the ninth staff showing a rest. The tenth staff is for Vlins. (Violins) in treble clef, featuring a melodic line with slurs and ties. The score is divided into two measures by a double bar line.

El. B.

El. B.

D. Set

El. Guit.

Tba.

Tba.

Synth.

Synth.

El. Guit.

El. Guit.

Vlins.

Detailed description: This musical score page contains ten staves for measures 103 and 104. The instruments are: El. B. (Electric Bass), D. Set (Drum Set), El. Guit. (Electric Guitar), Tba. (Tuba), Synth. (Synthesizer), El. Guit. (Electric Guitar), and Vlins. (Violins). Measure 103 features a bass line with eighth notes and rests, a drum set with a complex pattern including triplets and sixteenth notes, and a synthesizer with a rapid sixteenth-note run. Measure 104 continues the bass and guitar lines, while the drum set and synthesizer have rests. The violin part consists of sustained notes with some movement.

105

El. B.

El. B.

D. Set

El. Guit.

Tba.

Tba.

Synth.

Synth.

El. Guit.

El. Guit.

Vlins.

El. B.

El. B.

D. Set

El. Guit.

Tba.

Tba.

Synth.

Synth.

El. Guit.

El. Guit.

Vlins.

The musical score for page 107 consists of ten staves. The first staff (El. B.) features a melodic line in the bass clef. The second staff (El. B.) is empty. The third staff (D. Set) shows a complex rhythmic pattern with eighth and sixteenth notes, including a five-measure rest. The fourth staff (El. Guit.) is empty. The fifth staff (Tba.) is empty. The sixth staff (Tba.) is empty. The seventh staff (Synth.) is empty. The eighth staff (Synth.) is empty. The ninth staff (El. Guit.) features a melodic line in the treble clef. The tenth staff (El. Guit.) is empty. The eleventh staff (Vlins.) features a melodic line in the treble clef.

109

El. B.

El. B.

D. Set

El. Guit.

Tba.

Tba.

Synth.

Synth.

El. Guit.

El. Guit.

Vlins.

The musical score for page 109 consists of ten staves. The first staff (El. B.) features a melodic line in the bass clef. The second staff (El. B.) is a whole rest. The third staff (D. Set) shows a drum pattern with eighth notes and rests, including a five-measure rest. The fourth staff (El. Guit.) is a whole rest. The fifth staff (Tba.) is a whole rest. The sixth staff (Tba.) is a whole rest. The seventh staff (Synth.) is a whole rest. The eighth staff (Synth.) shows a melodic line in the treble clef. The ninth staff (El. Guit.) features a melodic line in the treble clef. The tenth staff (El. Guit.) is a whole rest. The eleventh staff (Vlins.) features a melodic line in the treble clef.

El. B.

El. B.

D. Set

El. Guit.

Tba.

Tba.

Synth.

Synth.

El. Guit.

El. Guit.

Vlins.

113

El. B.

El. B.

D. Set

El. Guit.

Tba.

Tba.

Synth.

Synth.

El. Guit.

El. Guit.

Vlins.

El. B.

El. B.

D. Set

El. Guit.

Tba.

Tba.

Synth.

Synth.

El. Guit.

El. Guit.

Vlins.