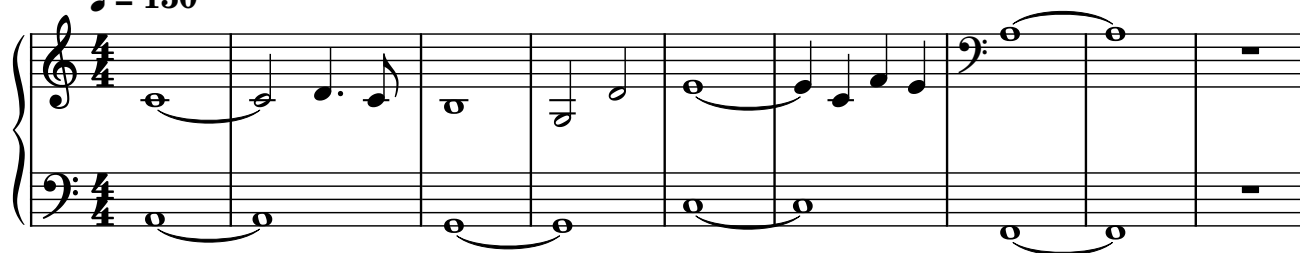
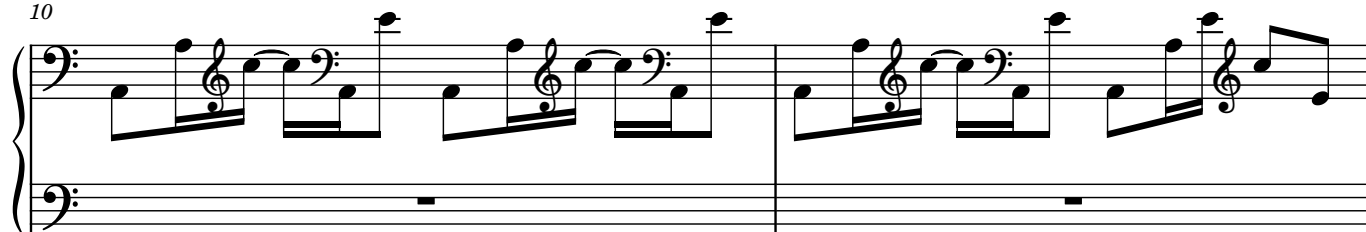


♩ = 150



10



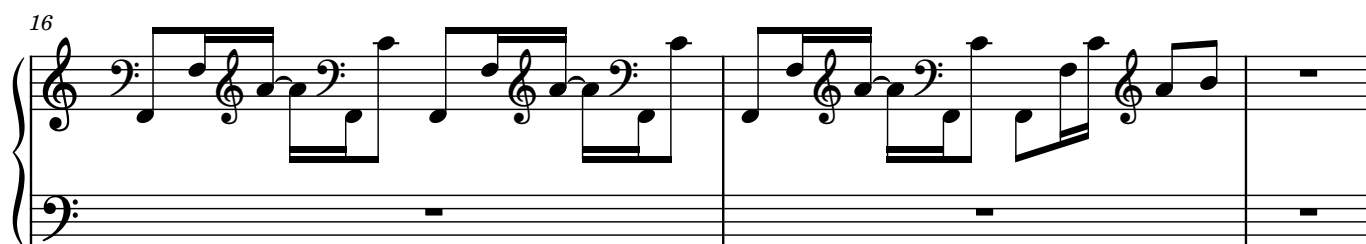
12



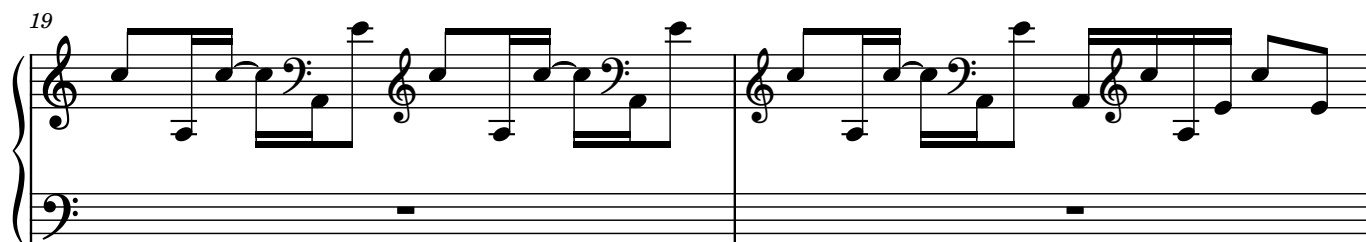
14



16



19



21

Measures 21-22. The right hand plays a sequence of eighth and sixteenth notes, while the left hand has whole rests.

23

Measures 23-24. The right hand continues the melodic line with eighth and sixteenth notes, and the left hand remains at rest.

25

Measures 25-27. Measure 25 continues the pattern, measure 26 introduces a new melodic phrase, and measure 27 ends with a whole rest in the right hand.

28

Measures 28-30. The right hand plays a continuous melodic line, and the left hand has whole rests.

30

Measures 30-31. The right hand continues the melodic development, and the left hand remains at rest.

32

Measures 32-33. The right hand plays a more complex melodic figure with slurs, and the left hand has whole rests.

