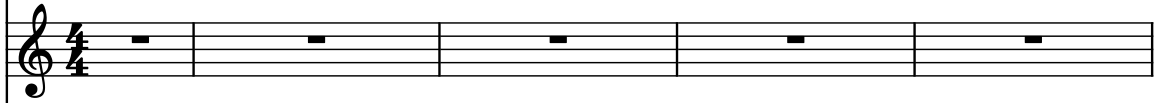


♩ = 126

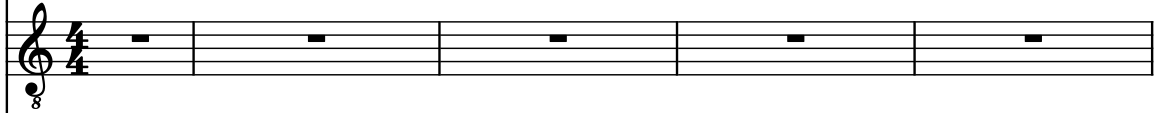
Electric Guitar



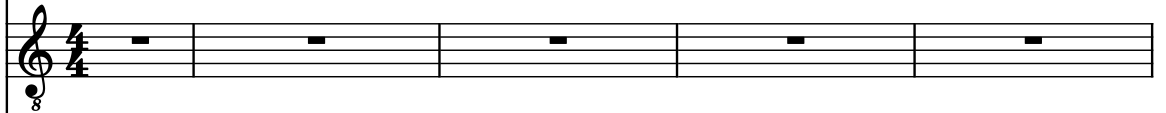
Alto Saxophone



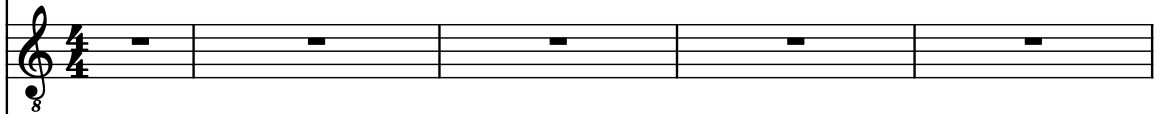
Electric Guitar



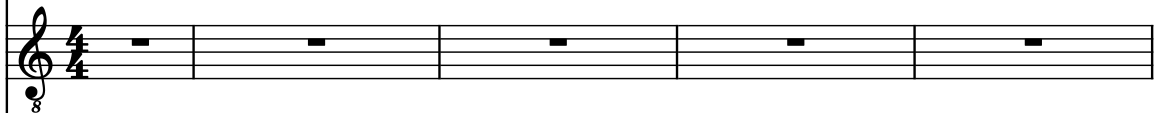
Electric Guitar



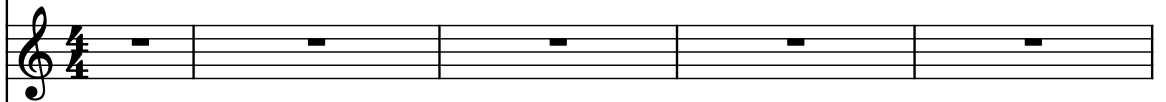
Electric Guitar



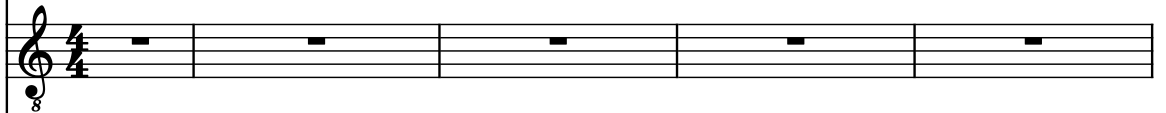
Electric Guitar



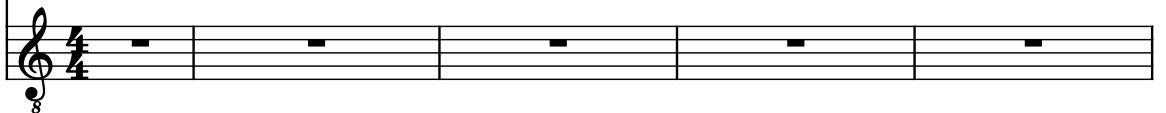
Piano



Classical Guitar



Electric Guitar



6

El. Guit.

A. Sax.

El. Guit.

El. Guit.

El. Guit.

El. Guit.

Pno.

Guit.

El. Guit.

10

El. Guit.

A. Sax.

El. Guit.

El. Guit.

El. Guit.

El. Guit.

Pno.

Guit.

El. Guit.

8

8

8

8

8

8

8

8

8

14

El. Guit.

A. Sax.

El. Guit.

El. Guit.

El. Guit.

El. Guit.

Pno.

Guit.

El. Guit.

The musical score for page 4, measures 14-17, is as follows:

- Measure 14:** The first staff (El. Guit.) contains a complex chordal texture with many beamed notes. The second staff (A. Sax.) contains a few notes, including a sharp sign.
- Measure 15:** Similar to measure 14, the first staff has complex notation, and the second staff has a few notes.
- Measure 16:** The first staff has a sustained note with a long horizontal line. The second staff has a sustained note with a long horizontal line. The third staff has a sustained note with a long horizontal line. The fourth staff has a sustained note with a long horizontal line. The fifth staff has a sustained note with a long horizontal line. The sixth staff has a sustained note with a long horizontal line. The seventh staff (Pno.) has a sustained note with a long horizontal line. The eighth staff (Guit.) has a sustained note with a long horizontal line. The ninth staff (El. Guit.) has a sustained note with a long horizontal line.
- Measure 17:** Similar to measure 16, the first two staves have sustained notes with long horizontal lines, and the other staves have rests.

18

El. Guit.

A. Sax.

El. Guit.

El. Guit.

El. Guit.

El. Guit.

Pno.

Guit.

El. Guit.

23

El. Guit.

A. Sax.

El. Guit.

El. Guit.

El. Guit.

El. Guit.

Pno.

Guit.

El. Guit.

26

El. Guit.

A. Sax.

El. Guit.

El. Guit.

El. Guit.

El. Guit.

Pno.

Guit.

El. Guit.

Detailed description: This musical score page contains measures 26, 27, and 28. The staves are arranged vertically. The first staff (El. Guit.) has whole rests in all three measures. The second staff (A. Sax.) has a half note G4 in measure 26, a half note A4 in measure 27, and a quarter note G#4 in measure 28, with a fermata over it. The third staff (El. Guit.) has whole rests. The fourth staff (El. Guit.) has a continuous eighth-note melody: G4-A4-B4 in measure 26, A4-G4-F#4 in measure 27, and E4-D4-C4 in measure 28. The fifth staff (El. Guit.) has a complex texture with many beamed notes and ties, including some with accidentals. The sixth staff (El. Guit.) has whole rests. The seventh staff (Pno.) has whole rests. The eighth staff (Guit.) has whole rests. The ninth staff (El. Guit.) has whole rests. All staves are in treble clef with a key signature of one flat (Bb).

29

El. Guit.

A. Sax.

El. Guit.

El. Guit.

El. Guit.

El. Guit.

Pno.

Guit.

El. Guit.

This musical score page, numbered 29, contains nine staves. The instruments are arranged as follows: El. Guit. (top), A. Sax., El. Guit., El. Guit., El. Guit., El. Guit., Pno., Guit., and El. Guit. (bottom). The first staff (El. Guit.) and the fifth staff (El. Guit.) contain whole rests. The second staff (A. Sax.) features a melodic line with eighth and quarter notes, including a key signature change to one sharp (F#) in the third measure. The third staff (El. Guit.) contains whole rests. The fourth staff (El. Guit.) has a melodic line with eighth notes and quarter notes, some beamed together. The sixth staff (El. Guit.) contains a series of chords, mostly dyads and triads, with some beaming. The seventh staff (Pno.) contains whole rests. The eighth staff (Guit.) contains whole rests. The ninth staff (El. Guit.) contains whole rests. All staves are in treble clef and 8/8 time, as indicated by the '8' below the first staff.

32

El. Guit.

A. Sax.

El. Guit.

El. Guit.

El. Guit.

El. Guit.

Pno.

Guit.

El. Guit.

35

El. Guit.

A. Sax.

El. Guit.

El. Guit.

El. Guit.

El. Guit.

Pno.

Guit.

El. Guit.

40

El. Guit.

A. Sax.

El. Guit.

El. Guit.

El. Guit.

El. Guit.

Pno.

Guit.

El. Guit.

46

El. Guit.

A. Sax.

El. Guit.

El. Guit.

El. Guit.

El. Guit.

Pno.

Guit.

El. Guit.

Detailed description: This page contains musical notation for measures 46 through 50. The score is arranged in nine staves. The first staff is labeled 'El. Guit.' and contains five measures of whole rests. The second staff is labeled 'A. Sax.' and contains five measures of music: measure 46 has a half note G#4, a quarter note A4, and a quarter note B4; measure 47 has a quarter note C5, a quarter note B4, and a quarter note A4; measure 48 has a quarter note G#4, a quarter note F#4, and a quarter note E4; measure 49 has a quarter rest, a quarter note D#4, and a quarter note C#4; measure 50 has a quarter note B4, a quarter note A4, and a quarter note G#4. The third staff is labeled 'El. Guit.' and contains five measures of whole rests. The fourth staff is labeled 'El. Guit.' and contains five measures of whole rests. The fifth staff is labeled 'El. Guit.' and contains five measures of music: measure 46 has a half note G#4, a half note A4, and a half note B4; measure 47 has a half note C5, a half note B4, and a half note A4; measure 48 has a half note G#4, a half note F#4, and a half note E4; measure 49 has a half note D#4, a half note C#4, and a half note B4; measure 50 has a half note A4, a half note G#4, and a half note F#4. The sixth staff is labeled 'El. Guit.' and contains five measures of music: measure 46 has a half note G#4, a half note A4, and a half note B4; measure 47 has a half note C5, a half note B4, and a half note A4; measure 48 has a half note G#4, a half note F#4, and a half note E4; measure 49 has a half note D#4, a half note C#4, and a half note B4; measure 50 has a half note A4, a half note G#4, and a half note F#4. The seventh staff is labeled 'Pno.' and contains five measures of whole rests. The eighth staff is labeled 'Guit.' and contains five measures of whole rests. The ninth staff is labeled 'El. Guit.' and contains five measures of whole rests.

51

El. Guit.

A. Sax.

El. Guit.

El. Guit.

El. Guit.

El. Guit.

Pno.

Guit.

El. Guit.

56

El. Guit.

A. Sax.

El. Guit.

El. Guit.

El. Guit.

El. Guit.

Pno.

Guit.

El. Guit.

Detailed description: This page of a musical score contains measures 56 through 60. The score is arranged in nine staves. The first staff is labeled 'El. Guit.' and contains five measures of whole rests. The second staff is labeled 'A. Sax.' and contains five measures of music: measure 56 has a whole rest; measure 57 has a quarter rest followed by an eighth note G#4, an eighth note A4, and a quarter note Bb4; measure 58 has eighth notes A4, G#4, F#4, and E4; measure 59 has eighth notes D4, C#4, B3, and A3; measure 60 has a whole rest. The third, fourth, and fifth staves are labeled 'El. Guit.' and contain five measures of whole rests. The sixth staff is labeled 'El. Guit.' and contains five measures of music: measure 56 has a whole rest; measure 57 has a half note chord of G#4 and A4; measure 58 has a half note chord of F#4 and E4; measure 59 has a half note chord of D4 and C#4; measure 60 has a whole rest. The seventh staff is labeled 'El. Guit.' and contains five measures of music: measure 56 has eighth notes G#4, A4, Bb4, and A4; measure 57 has eighth notes G#4, F#4, E4, and D4; measure 58 has a half note chord of G#4 and A4; measure 59 has a half note chord of F#4 and E4; measure 60 has eighth notes G#4, A4, Bb4, and A4. The eighth staff is labeled 'Pno.' and contains five measures of whole rests. The ninth staff is labeled 'Guit.' and contains five measures of whole rests. The tenth staff is labeled 'El. Guit.' and contains five measures of whole rests. A rehearsal mark '56' is placed above the first staff.

61

El. Guit.

A. Sax.

El. Guit.

El. Guit.

El. Guit.

El. Guit.

Pno.

Guit.

El. Guit.

Detailed description: This musical score page contains measures 61, 62, and 63. The instruments are arranged in nine staves. The first staff (El. Guit.) has whole rests in all three measures. The second staff (A. Sax.) has a melodic line in measure 61, a whole rest in measure 62, and another melodic line in measure 63. The third staff (El. Guit.) has whole rests in all three measures. The fourth staff (El. Guit.) has a complex melodic line with eighth and sixteenth notes across all three measures. The fifth staff (El. Guit.) features a dense, multi-measure chordal texture with many beamed notes. The sixth staff (El. Guit.) has a melodic line in measure 61, followed by whole rests in measures 62 and 63. The seventh staff (Pno.) has whole rests in all three measures. The eighth staff (Guit.) has whole rests in all three measures. The ninth staff (El. Guit.) has whole rests in all three measures. All staves are in treble clef with a key signature of one sharp (F#).

64

El. Guit.

A. Sax.

El. Guit.

El. Guit.

El. Guit.

El. Guit.

Pno.

Guit.

El. Guit.

68

El. Guit.

A. Sax.

El. Guit.

El. Guit.

El. Guit.

El. Guit.

Pno.

Guit.

El. Guit.

[illegible]

73

El. Guit.

A. Sax.

El. Guit.

El. Guit.

El. Guit.

El. Guit.

Pno.

Guit.

El. Guit.

75

El. Guit.

A. Sax.

El. Guit.

El. Guit.

El. Guit.

El. Guit.

Pno.

Guit.

El. Guit.

79

El. Guit.

A. Sax.

El. Guit.

El. Guit.

El. Guit.

El. Guit.

Pno.

Guit.

El. Guit.

8

8

8

8

8

8

8

8

8

8

85

El. Guit.

A. Sax.

El. Guit.

El. Guit.

El. Guit.

El. Guit.

Pno.

Guit.

El. Guit.

Detailed description of the musical score: The score is for measures 85 through 90. The first five staves are for Electric Guitar (El. Guit.), the sixth for Alto Saxophone (A. Sax.), the seventh for Piano (Pno.), the eighth for Guitar (Guit.), and the ninth for another Electric Guitar. Measures 85-89: The five El. Guit. staves have whole rests. The A. Sax. staff has whole rests. The Pno. staff has a melody: measure 85 (half rest), measure 86 (quarter notes G#4, A4, B4), measure 87 (quarter notes A4, G#4, F#4), measure 88 (quarter notes E4, D4, C#4), measure 89 (half note B3). The Guit. staff has: measure 85 (half note G#3), measure 86 (triplet of eighth notes G#3, A3, B3), measure 87 (half note G#3), measure 88 (half note G#3), measure 89 (half note G#3). The bottom El. Guit. staff has: measure 85 (half rest), measure 86 (half note G#3), measure 87 (half note G#3), measure 88 (half note G#3), measure 89 (quarter notes G#3, A3, B3). Measure 90: The five El. Guit. staves have whole rests. The A. Sax. staff has whole rests. The Pno. staff has a quarter note G#4. The Guit. staff has a triplet of eighth notes G#3, A3, B3. The bottom El. Guit. staff has a half rest.

91

El. Guit.

A. Sax.

El. Guit.

El. Guit.

El. Guit.

El. Guit.

Pno.

Guit.

El. Guit.

95

El. Guit.

A. Sax.

El. Guit.

El. Guit.

El. Guit.

El. Guit.

Pno.

Guit.

El. Guit.

99

El. Guit.

A. Sax.

El. Guit.

El. Guit.

El. Guit.

El. Guit.

Pno.

Guit.

El. Guit.

Detailed description: This musical score page, numbered 99, contains ten staves. The first staff is for 'El. Guit.' and contains three measures of whole rests. The second staff is for 'A. Sax.' and contains three measures: the first has a whole rest, the second has an eighth rest followed by eighth notes G4, A4, B4 (sharped), and C5, and the third has an eighth rest followed by eighth notes G4, A4, B4 (sharped), and C5. The third staff is for 'El. Guit.' and contains three measures of whole rests. The fourth staff is for 'El. Guit.' and contains three measures of eighth-note patterns: the first has eighth notes G4, A4, B4, C5, and eighth rests; the second has eighth notes G4, A4, B4, C5, and eighth rests; the third has eighth notes G4, A4, B4, C5, and eighth rests. The fifth staff is for 'El. Guit.' and contains three measures of chords: the first has a whole rest, the second has a chord of G4, A4, B4, and C5, and the third has a chord of G4, A4, B4, and C5. The sixth staff is for 'El. Guit.' and contains three measures of whole rests. The seventh staff is for 'Pno.' and contains three measures of whole rests. The eighth staff is for 'Guit.' and contains three measures of whole rests. The ninth staff is for 'El. Guit.' and contains three measures of whole rests. The tenth staff is for 'El. Guit.' and contains three measures of whole rests.

102

The musical score for page 102 consists of eight staves. The first staff is labeled 'El. Guit.' and contains three measures of whole rests. The second staff is labeled 'A. Sax.' and contains three measures of eighth-note and quarter-note patterns, including some beamed eighth notes and a final quarter note with a sharp. The third staff is labeled 'El. Guit.' and contains three measures of whole rests. The fourth staff is labeled 'El. Guit.' and contains three measures of eighth-note patterns, including some beamed eighth notes. The fifth staff is labeled 'El. Guit.' and contains three measures of chords, including some beamed eighth notes. The sixth staff is labeled 'El. Guit.' and contains three measures of whole rests. The seventh staff is labeled 'Pno.' and contains three measures of whole rests. The eighth staff is labeled 'Guit.' and contains three measures of whole rests. The ninth staff is labeled 'El. Guit.' and contains three measures of whole rests.

El. Guit.

A. Sax.

El. Guit.

El. Guit.

El. Guit.

El. Guit.

Pno.

Guit.

El. Guit.

105

El. Guit.

A. Sax.

El. Guit.

El. Guit.

El. Guit.

El. Guit.

Pno.

Guit.

El. Guit.

108

El. Guit.

A. Sax.

El. Guit.

El. Guit.

El. Guit.

Pno.

Guit.

El. Guit.

111

El. Guit.

A. Sax.

El. Guit.

El. Guit.

El. Guit.

El. Guit.

Pno.

Guit.

El. Guit.

115

El. Guit.

A. Sax.

El. Guit.

El. Guit.

El. Guit.

El. Guit.

Pno.

Guit.

El. Guit.

120

El. Guit.

A. Sax.

El. Guit.

El. Guit.

El. Guit.

El. Guit.

Pno.

Guit.

El. Guit.

124

El. Guit.

A. Sax.

El. Guit.

El. Guit.

El. Guit.

El. Guit.

Pno.

Guit.

El. Guit.

128

El. Guit.

A. Sax.

El. Guit.

El. Guit.

El. Guit.

El. Guit.

Pno.

Guit.

El. Guit.

132

El. Guit.

A. Sax.

El. Guit.

El. Guit.

El. Guit.

El. Guit.

Pno.

Guit.

El. Guit.

The musical score for page 34, measures 132-134, is presented below. The notation is in treble clef with a key signature of one sharp (F#). The first staff, labeled 'El. Guit.', plays a series of chords in measure 132, indicated by a '7' below the staff. The second staff, labeled 'A. Sax.', plays a melodic line starting in measure 133. The third staff, labeled 'El. Guit.', and the fourth staff, labeled 'El. Guit.', both play a single note in measure 132, indicated by a '7' below the staff. The fifth staff, labeled 'El. Guit.', and the sixth staff, labeled 'El. Guit.', both play a single note in measure 132, indicated by a '7' below the staff. The seventh staff, labeled 'Pno.', plays a melodic line starting in measure 132. The eighth staff, labeled 'Guit.', and the ninth staff, labeled 'El. Guit.', both play a single note in measure 132, indicated by a '7' below the staff. Measures 133 and 134 show rests for all instruments.