

$\text{♩} = 124$

System 1 (Measures 1-5): Treble clef, key of A major (three sharps), 3/4 time. The melody in the treble clef consists of eighth and quarter notes. The bass clef accompaniment features a steady eighth-note pattern.

6

System 2 (Measures 6-10): Continuation of the musical piece. The treble clef melody continues with eighth and quarter notes, while the bass clef accompaniment maintains its eighth-note pattern.

12

System 3 (Measures 12-16): Continuation of the musical piece. The treble clef melody continues with eighth and quarter notes, while the bass clef accompaniment maintains its eighth-note pattern.

17

System 4 (Measures 17-20): Continuation of the musical piece. The treble clef melody continues with eighth and quarter notes, while the bass clef accompaniment maintains its eighth-note pattern.

21

System 5 (Measures 21-26): Continuation of the musical piece. The treble clef melody continues with eighth and quarter notes, while the bass clef accompaniment maintains its eighth-note pattern.

27

System 6 (Measures 27-31): Continuation of the musical piece. The treble clef melody continues with eighth and quarter notes, while the bass clef accompaniment maintains its eighth-note pattern.

32

System 1 (Measures 32-36): Treble and bass staves. Treble staff: 32 (F#4, G#4, A5, G#4, F#4), 33 (E5, D#5, C#5, B4), 34 (A4, G#4, F#4, E4), 35 (D4, C#4, B3, A3), 36 (G#3, F#3, E3, D3). Bass staff: 32 (rest, F#3, G#3, A3), 33 (rest, B3, C#4, D4), 34 (rest, E4, F#4, G#4), 35 (rest, A4, B4, C#5), 36 (rest, D5, E5, F#5).

37

System 2 (Measures 37-42): Treble and bass staves. Treble staff: 37 (F#4, G#4, A5, G#4, F#4), 38 (E5, D#5, C#5, B4), 39 (A4, G#4, F#4, E4), 40 (D4, C#4, B3, A3), 41 (G#3, F#3, E3, D3), 42 (F#3, E3, D3, C3). Bass staff: 37 (rest, F#3, G#3, A3), 38 (rest, B3, C#4, D4), 39 (rest, E4, F#4, G#4), 40 (rest, A4, B4, C#5), 41 (rest, D5, E5, F#5), 42 (rest, G#5, A5, B5).

43

System 3 (Measures 43-46): Treble and bass staves. Treble staff: 43 (F#4, G#4, A5, G#4, F#4), 44 (E5, D#5, C#5, B4), 45 (A4, G#4, F#4, E4), 46 (D4, C#4, B3, A3). Bass staff: 43 (rest, F#3, G#3, A3), 44 (rest, B3, C#4, D4), 45 (rest, E4, F#4, G#4), 46 (rest, A4, B4, C#5).

47

System 4 (Measures 47-50): Treble and bass staves. Treble staff: 47 (F#4, G#4, A5, G#4, F#4), 48 (E5, D#5, C#5, B4), 49 (A4, G#4, F#4, E4), 50 (D4, C#4, B3, A3). Bass staff: 47 (rest, F#3, G#3, A3), 48 (rest, B3, C#4, D4), 49 (rest, E4, F#4, G#4), 50 (rest, A4, B4, C#5).

51

System 5 (Measures 51-53): Treble and bass staves. Treble staff: 51 (F#4, G#4, A5, G#4, F#4), 52 (E5, D#5, C#5, B4), 53 (A4, G#4, F#4, E4). Bass staff: 51 (rest, F#3, G#3, A3), 52 (rest, B3, C#4, D4), 53 (rest, E4, F#4, G#4).

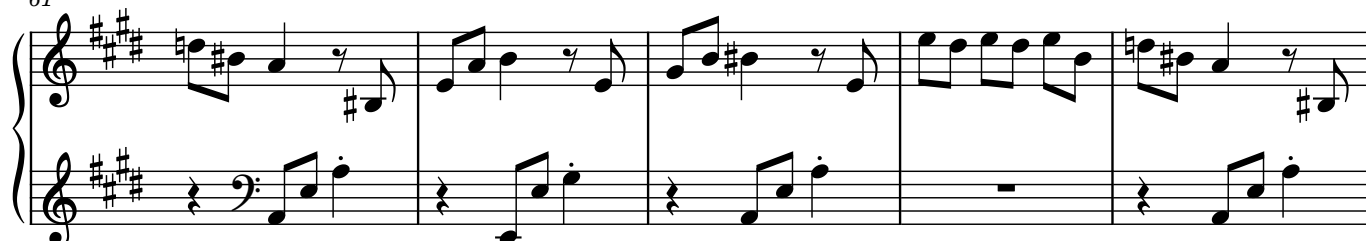
54

System 6 (Measures 54-56): Treble and bass staves. Treble staff: 54 (F#4, G#4, A5, G#4, F#4), 55 (E5, D#5, C#5, B4), 56 (A4, G#4, F#4, E4). Bass staff: 54 (rest, F#3, G#3, A3), 55 (rest, B3, C#4, D4), 56 (rest, E4, F#4, G#4).

56



61



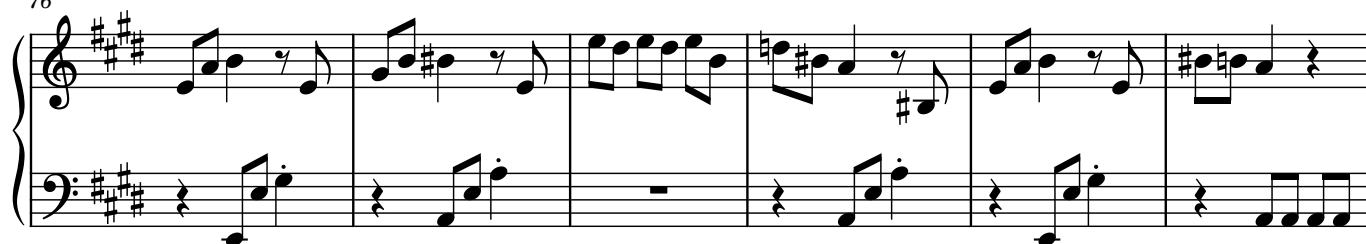
66



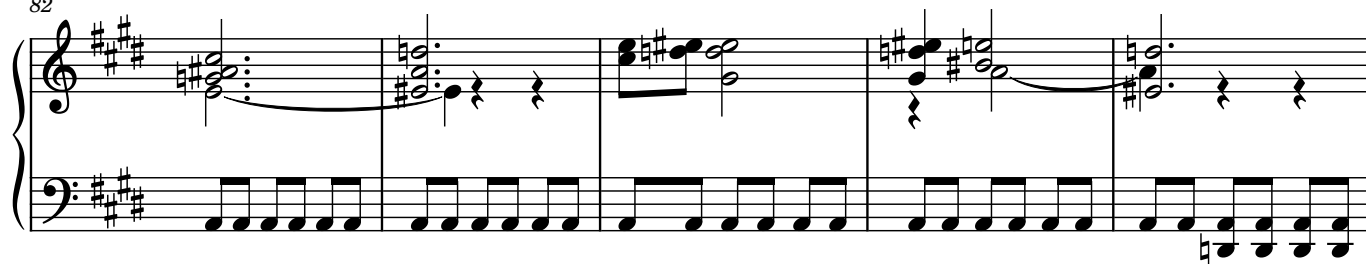
71



76



82



87

Measures 87-91. Treble clef: Measure 87 has a chord of F#4, A#4, C#5. Measure 88 has a chord of G#4, B4, D#5. Measure 89 has a chord of A4, C#5, E5. Measure 90 has a chord of B4, D#5, F#5. Measure 91 has a chord of C#5, E5, G5. Bass clef: Continuous eighth-note accompaniment starting on F#3, moving up stepwise.

92

Measures 92-96. Treble clef: Measure 92 has a chord of D#5, F#5, A5. Measure 93 has a chord of E5, G5, B5. Measure 94 has a chord of F#5, A5, C#6. Measure 95 has a chord of G5, B5, D#6. Measure 96 has a chord of A5, C#6, E6. Bass clef: Continuous eighth-note accompaniment starting on F#3, moving up stepwise.

97

Measures 97-100. Treble clef: Measure 97 has a chord of B4, D#5, F#5. Measure 98 has a chord of C#5, E5, G5. Measure 99 has a chord of D#5, F#5, A5. Measure 100 has a chord of E5, G5, B5. Bass clef: Continuous eighth-note accompaniment starting on F#3, moving up stepwise.

101

Measures 101-102. Treble clef: Measure 101 has a chord of F#5, A5, C#6. Measure 102 has a chord of G5, B5, D#6. Bass clef: Continuous eighth-note accompaniment starting on F#3, moving up stepwise.

103

Measures 103-106. Treble clef: Measure 103 has a chord of A5, C#6, E6. Measure 104 has a chord of B5, D#6, F#6. Measure 105 has a chord of C#6, E6, G6. Measure 106 has a chord of D#6, F#6, A6. Bass clef: Continuous eighth-note accompaniment starting on F#3, moving up stepwise.

107

Measures 107-110. Treble clef: Measure 107 has a chord of E6, G6, B6. Measure 108 has a chord of F#6, A6, C#7. Measure 109 has a chord of G6, B6, D#7. Measure 110 has a chord of A6, C#7, E7. Bass clef: Continuous eighth-note accompaniment starting on F#3, moving up stepwise.

112



116



122

