

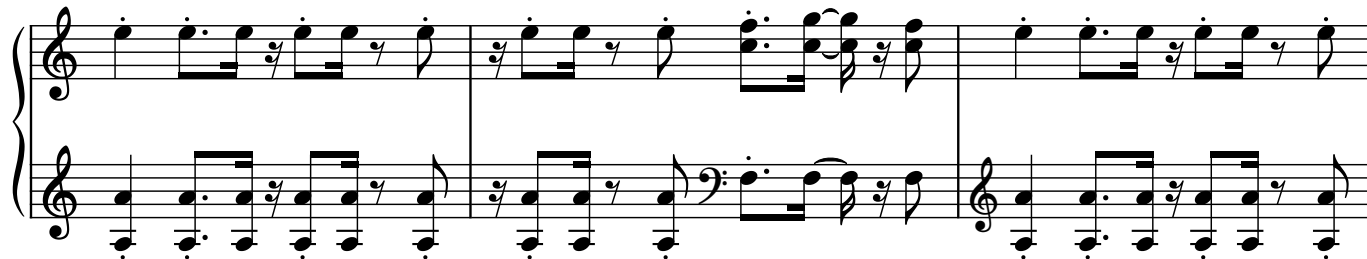
♩ = 130



5



9



12



15



18



21



24



27



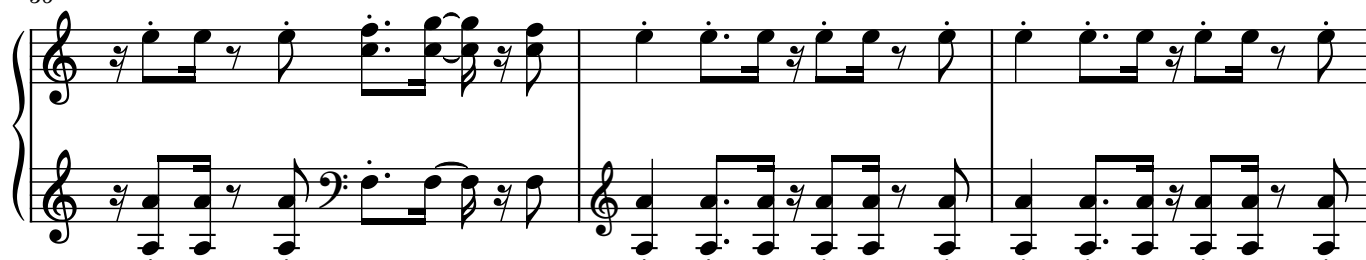
30



33



36



39



43



46



49



52



55



58

61

64

67

70

73

Detailed description: This image shows a page of musical notation for a piano piece, spanning measures 58 to 75. The notation is arranged in six systems, each with a system number (58, 61, 64, 67, 70, 73) at the beginning. Each system consists of two staves: a treble staff and a bass staff. The music features a variety of note values, including eighth and sixteenth notes, as well as rests. There are several instances of beamed sixteenth notes and eighth notes, suggesting a lively tempo. The key signature is not explicitly shown, but the notation uses natural signs for notes, indicating a key with no sharps or flats. The overall style is that of a contemporary piano composition.

76



79



82



85



88

