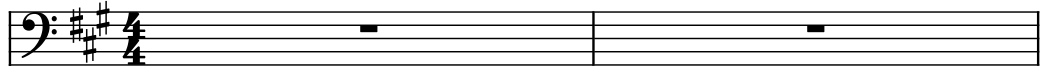


♩ = 127

Bass Synthesizer, BASS

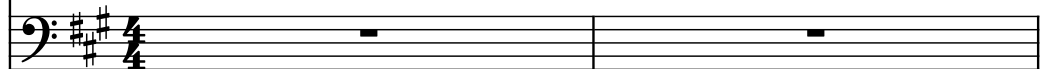


Saw Synthesizer, STAB

http://www.nonstop2k.com  
NS2K Member: djrenco

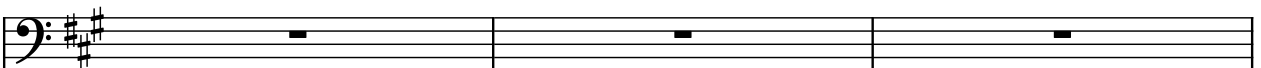
Two staves in treble and bass clefs with a key signature of two sharps (F# and C#) and a 4/4 time signature. The treble staff contains a repeating eighth-note melody. The bass staff contains a complex accompaniment with dotted eighth notes and sixteenth notes. The first measure is split into two parts by the text overlay.

Pad Synthesizer, PADS



3

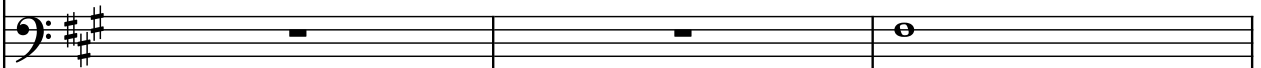
Synth.



Synth.

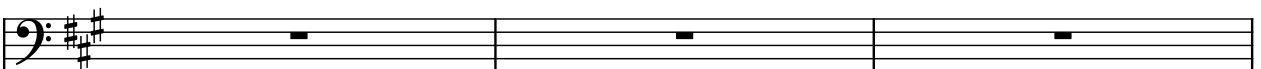
Two staves in treble and bass clefs with a key signature of two sharps (F# and C#). The treble staff contains a repeating eighth-note melody. The bass staff contains a complex accompaniment with dotted eighth notes and sixteenth notes.

Synth.



6

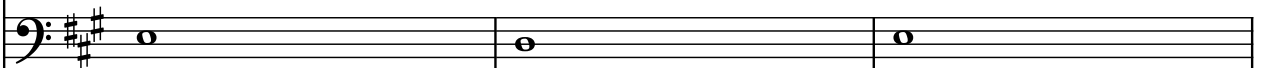
Synth.



Synth.

Two staves in treble and bass clefs with a key signature of two sharps (F# and C#). The treble staff contains a repeating eighth-note melody. The bass staff contains a complex accompaniment with dotted eighth notes and sixteenth notes.

Synth.



9

Synth.

Synth.

Synth.

12

Synth.

Synth.

Synth.

15

Synth.

Synth.

Synth.