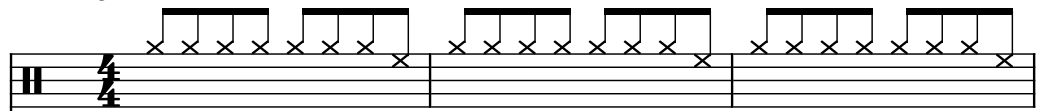


♩ = 147

Drumset, Staff-1



Drumset, Staff-2



Bass Guitar, Staff-3



By Chris Rada

Electric Guitar, Staff-4

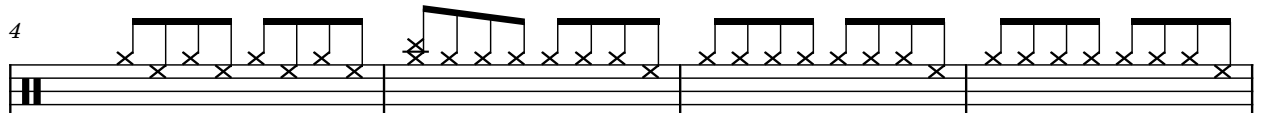


Brass Synthesizer, Staff-5



4

D. Set



D. Set



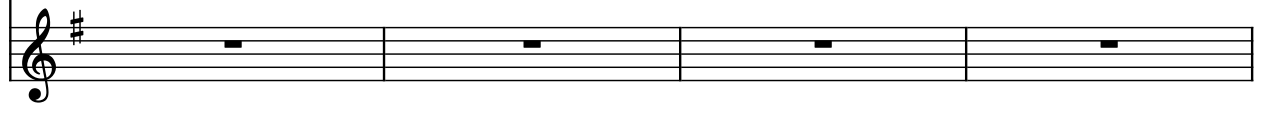
B. Guit.



El. Guit.



Synth.



8

D. Set

D. Set

B. Guit.

El. Guit.

Synth.

12

D. Set

D. Set

B. Guit.

El. Guit.

Synth.

16

D. Set

D. Set

B. Guit.

El. Guit.

Synth.

20

D. Set

D. Set

B. Guit.

El. Guit.

Synth.

24

24

D. Set

D. Set

B. Guit.

El. Guit.

Synth.

This system contains measures 24 through 27. The D. Set (top two staves) features a rhythmic pattern of eighth notes with 'x' marks above them. The B. Guit. (third staff) plays a complex bass line with eighth notes and rests. The El. Guit. (fourth staff) has a sustained chord with a tremolo effect. The Synth. (bottom staff) plays a sequence of eighth notes.

28

28

D. Set

D. Set

B. Guit.

El. Guit.

Synth.

This system contains measures 28 through 31. The D. Set (top two staves) continues the rhythmic pattern. The B. Guit. (third staff) continues its complex bass line. The El. Guit. (fourth staff) has a sustained chord with a tremolo effect. The Synth. (bottom staff) plays a sequence of eighth notes.

32

D. Set

D. Set

B. Guit.

El. Guit.

Synth.

36

D. Set

D. Set

B. Guit.

El. Guit.

Synth.

40

D. Set

D. Set

B. Guit.

El. Guit.

Synth.

44

D. Set

D. Set

B. Guit.

El. Guit.

Synth.

48

D. Set

D. Set

B. Guit.

El. Guit.

Synth.

52

D. Set

D. Set

B. Guit.

El. Guit.

Synth.

57

D. Set

D. Set

B. Guit.

El. Guit.

Synth.

Measures 57-60: The D. Set parts play a rhythmic pattern of eighth notes. The B. Guit. and El. Guit. parts are mostly rests. The Synth. part has a melodic line with eighth notes and rests.

61

D. Set

D. Set

B. Guit.

El. Guit.

Synth.

Measures 61-64: The D. Set parts continue with rhythmic patterns. The B. Guit. part has a more active line with eighth notes and rests. The El. Guit. part has a sustained chord with a tremolo effect. The Synth. part has a melodic line with eighth notes and rests.



64

D. Set

D. Set

B. Guit.

El. Guit.

Synth.

This system contains measures 64, 65, and 66. The D. Set (top two staves) features a rhythmic pattern of eighth notes marked with 'x' on the first staff and a melodic line with eighth notes and rests on the second staff. The B. Guit. (third staff) plays a complex eighth-note pattern. The El. Guit. (fourth staff) has a sustained chord with a tremolo effect. The Synth. (bottom staff) plays a sequence of eighth notes.

67

D. Set

D. Set

B. Guit.

El. Guit.

Synth.

This system contains measures 67, 68, and 69. The D. Set (top two staves) continues the rhythmic and melodic patterns from the previous system. The B. Guit. (third staff) maintains its eighth-note pattern. The El. Guit. (fourth staff) has a sustained chord with a tremolo effect. The Synth. (bottom staff) plays a sequence of eighth notes.

70

D. Set

D. Set

B. Guit.

El. Guit.

Synth.

70

73

D. Set

D. Set

B. Guit.

El. Guit.

Synth.

73

76

D. Set

D. Set

B. Guit.

El. Guit.

Synth.