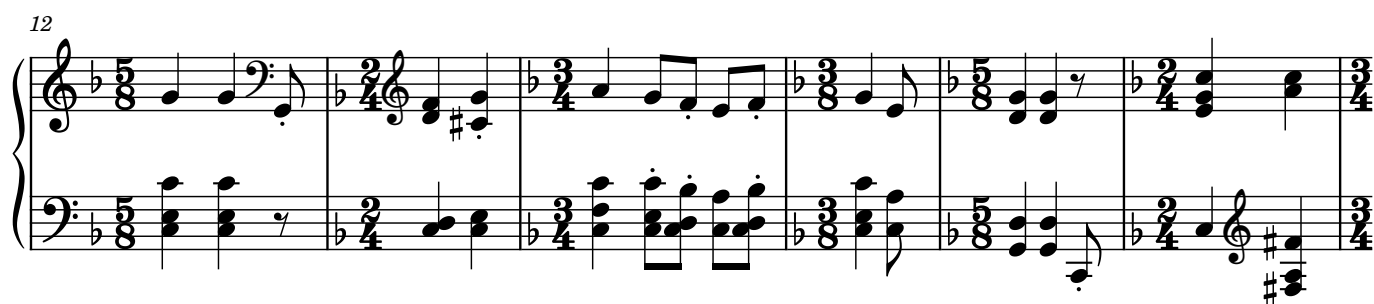


♩ = 154



28

Measures 28-31 of a musical score. The system consists of two staves. The upper staff is in treble clef with a key signature of one flat (B-flat). It contains eighth and sixteenth notes, some with grace notes, and rests. The lower staff is in bass clef with a key signature of one flat. It contains chords and eighth notes. The system concludes with a double bar line and repeat dots.

32

Measures 32-36 of a musical score. The system consists of two staves. The upper staff is in treble clef with a key signature of one flat. It features a melodic line with eighth and sixteenth notes, some beamed together, and rests. The lower staff is in bass clef with a key signature of one flat. It contains a complex accompaniment with many beamed eighth and sixteenth notes, creating a rhythmic texture. The system concludes with a double bar line and repeat dots.

37

Measures 37-40 of a musical score. The system consists of two staves. The upper staff is in treble clef with a key signature of one flat. It contains a melodic line with eighth and sixteenth notes, some beamed together, and rests. The lower staff is in bass clef with a key signature of one flat. It contains a complex accompaniment with many beamed eighth and sixteenth notes, creating a rhythmic texture. The system concludes with a double bar line and repeat dots.