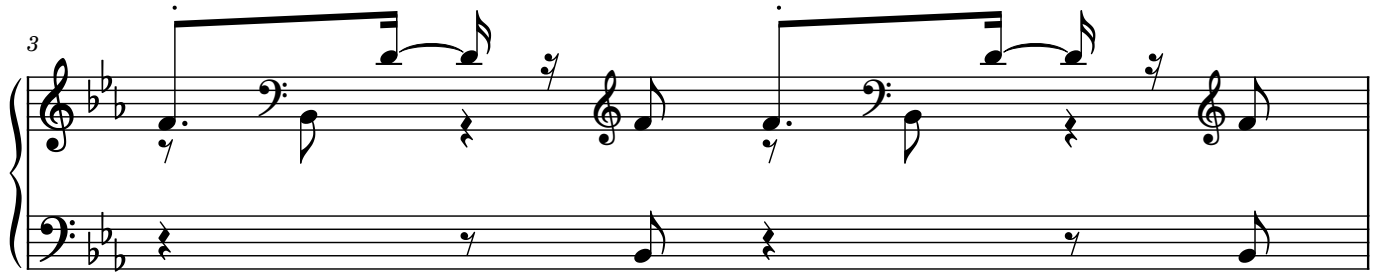


♩ = 135



2

11

Measures 11 and 12 of a musical score. The key signature has two flats (B-flat and E-flat). The melody in the right hand features eighth-note patterns with ties and rests. The left hand provides a simple accompaniment with eighth notes and rests.

12

Measures 13 and 14 of a musical score. The melody continues with eighth-note patterns and ties. The left hand accompaniment remains consistent with the previous measures.

14

Measures 15 and 16 of a musical score. The melody continues with eighth-note patterns and ties. The left hand accompaniment remains consistent with the previous measures.

16

Measures 17 and 18 of a musical score. The melody continues with eighth-note patterns and ties. The left hand accompaniment remains consistent with the previous measures. The piece concludes with a double bar line.