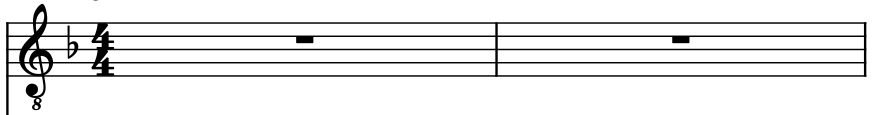
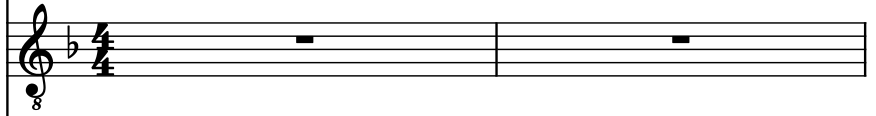


♩ = 130

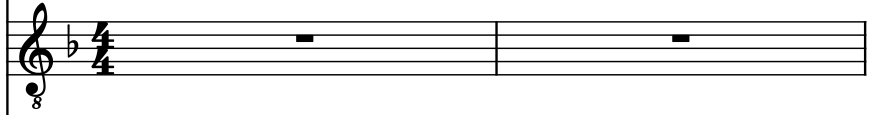
Electric Guitar, WinJammer Demo



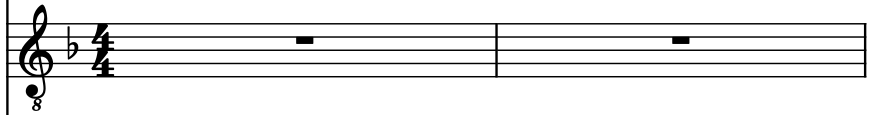
Electric Guitar, WinJammer Demo



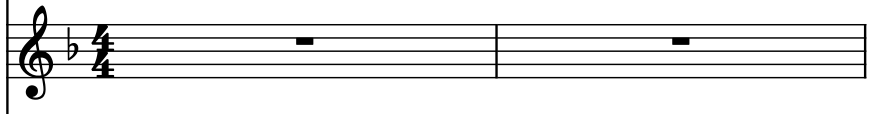
Electric Guitar, WinJammer Demo



Electric Guitar, WinJammer Demo



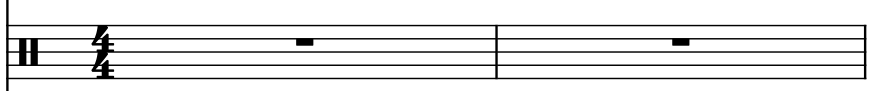
Square Synthesizer, WinJammer Demo



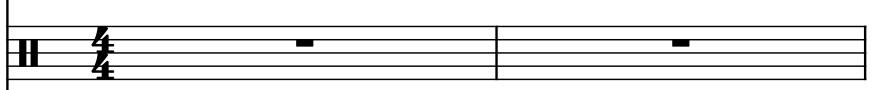
Electric Bass, WinJammer Demo



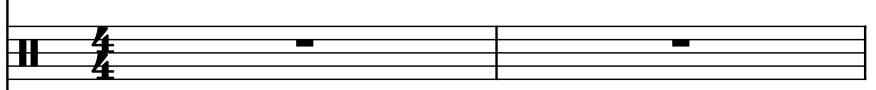
Drumset, WinJammer Demo



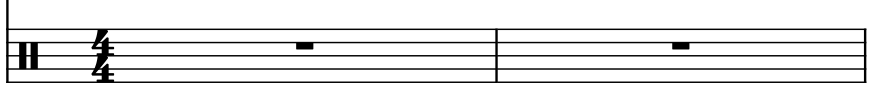
Drumset, WinJammer Demo



Drumset, WinJammer Demo



Drumset, WinJammer Demo



3

El. Guit.

El. Guit.

El. Guit.

El. Guit.

Synth.

El. B.

D. Set

D. Set

D. Set

D. Set

The musical score for page 2 consists of ten staves. The first four staves are for Electric Guitar (El. Guit.), the fifth for Synthesizer (Synth.), the sixth for Electric Bass (El. B.), and the last four for Drum Set (D. Set). The score is in 3/4 time and B-flat major. The first staff (El. Guit.) has a treble clef and a key signature of one flat, with a 3-measure rest at the beginning. The second staff (El. Guit.) has a treble clef and a key signature of one flat, with a 3-measure rest at the beginning. The third staff (El. Guit.) has a treble clef and a key signature of one flat, with a 3-measure rest at the beginning. The fourth staff (El. Guit.) has a treble clef and a key signature of one flat, with a 3-measure rest at the beginning. The fifth staff (Synth.) has a treble clef and a key signature of one flat, with a 3-measure rest at the beginning. The sixth staff (El. B.) has a bass clef and a key signature of one flat, with a 3-measure rest at the beginning. The seventh staff (D. Set) has a drum clef and a key signature of one flat, with a 3-measure rest at the beginning. The eighth staff (D. Set) has a drum clef and a key signature of one flat, with a 3-measure rest at the beginning. The ninth staff (D. Set) has a drum clef and a key signature of one flat, with a 3-measure rest at the beginning. The tenth staff (D. Set) has a drum clef and a key signature of one flat, with a 3-measure rest at the beginning.

6

El. Guit.

El. Guit.

El. Guit.

El. Guit.

Synth.

El. B.

D. Set

D. Set

D. Set

D. Set

9

El. Guit.

El. Guit.

El. Guit.

El. Guit.

Synth.

El. B.

D. Set

D. Set

D. Set

D. Set

The musical score for page 4, measures 9-11, is as follows:

- El. Guit. (Staff 1):** Treble clef, key of B-flat. Measure 9: quarter note B-flat, quarter note D, quarter note F, quarter note A. Measure 10: whole rest. Measure 11: quarter note B-flat, quarter note D, quarter note F, quarter note A.
- El. Guit. (Staff 2):** Treble clef, key of B-flat. Measure 9: eighth rest, eighth note B-flat, eighth note D, eighth note F, eighth note A, eighth note B-flat, eighth note D, eighth note F, eighth note A. Measure 10: eighth rest, eighth note B-flat, eighth note D, eighth note F, eighth note A, eighth note B-flat, eighth note D, eighth note F, eighth note A. Measure 11: eighth rest, eighth note B-flat, eighth note D, eighth note F, eighth note A, eighth note B-flat, eighth note D, eighth note F, eighth note A.
- El. Guit. (Staff 3):** Treble clef, key of B-flat. Measure 9: whole rest. Measure 10: whole rest. Measure 11: whole rest.
- El. Guit. (Staff 4):** Treble clef, key of B-flat. Measure 9: whole rest. Measure 10: whole rest. Measure 11: whole rest.
- Synth. (Staff 5):** Treble clef, key of B-flat. Measure 9: quarter note B-flat, quarter note D, quarter note F, quarter note A. Measure 10: whole rest. Measure 11: quarter note B-flat, quarter note D, quarter note F, quarter note A.
- El. B. (Staff 6):** Bass clef, key of B-flat. Measure 9: eighth note B-flat, eighth note D, eighth note F, eighth note A, eighth note B-flat, eighth note D, eighth note F, eighth note A. Measure 10: eighth note B-flat, eighth note D, eighth note F, eighth note A, eighth note B-flat, eighth note D, eighth note F, eighth note A. Measure 11: eighth note B-flat, eighth note D, eighth note F, eighth note A, eighth note B-flat, eighth note D, eighth note F, eighth note A.
- D. Set (Staff 7):** Treble clef, key of B-flat. Measure 9: quarter rest, quarter note B-flat, quarter rest, quarter note D. Measure 10: quarter rest, quarter note B-flat, quarter rest, quarter note D. Measure 11: quarter rest, quarter note B-flat, quarter rest, quarter note D.
- D. Set (Staff 8):** Treble clef, key of B-flat. Measure 9: whole rest. Measure 10: whole rest. Measure 11: whole rest.
- D. Set (Staff 9):** Treble clef, key of B-flat. Measure 9: whole rest. Measure 10: whole rest. Measure 11: whole rest.
- D. Set (Staff 10):** Treble clef, key of B-flat. Measure 9: whole rest. Measure 10: whole rest. Measure 11: whole rest.

12

El. Guit. 8

El. Guit. 8

El. Guit. 8

El. Guit. 8

Synth.

El. B.

D. Set

D. Set

D. Set

D. Set

15

El. Guit.

El. Guit.

El. Guit.

El. Guit.

Synth.

El. B.

D. Set

D. Set

D. Set

D. Set

The musical score for page 6, measures 15-17, is written for a band. The key signature has one flat (B-flat). The score includes staves for four Electric Guitars, a Synth, an Electric Bass, and four Drum Sets. Measure 15 starts with a treble clef and a key signature change to B-flat. The Electric Guitars and Synth play melodic lines, while the Electric Bass plays a steady eighth-note pattern. The Drum Sets play a simple pattern of eighth notes and rests.

18

El. Guit.

El. Guit.

El. Guit.

El. Guit.

Synth.

El. B.

D. Set

D. Set

D. Set

D. Set

21

El. Guit.

El. Guit.

El. Guit.

El. Guit.

Synth.

El. B.

D. Set

D. Set

D. Set

D. Set

8

8

8

8

8

8

8

8



24

El. Guit.

El. Guit.

El. Guit.

El. Guit.

Synth.

El. B.

D. Set

D. Set

D. Set

D. Set

27

El. Guit.

El. Guit.

El. Guit.

El. Guit.

Synth.

El. B.

D. Set

D. Set

D. Set

D. Set

30

El. Guit.

El. Guit.

El. Guit.

El. Guit.

Synth.

El. B.

D. Set

D. Set

D. Set

D. Set

The musical score for page 11, starting at measure 30, is arranged for a five-piece band. It includes five electric guitar staves, a synth staff, an electric bass staff, and four drum set staves. The key signature is one flat (B-flat). The electric guitar parts are diverse: the first staff has a melodic line with eighth notes and a final chord; the second staff has a similar melodic line with a final chord; the third staff has sustained notes; the fourth staff has sustained notes with a final chord. The synth part has a melodic line with eighth notes. The electric bass part has a steady eighth-note pattern. The drum set parts show a simple rhythmic pattern with snare and bass drum hits.

33

El. Guit.

El. Guit.

El. Guit.

El. Guit.

Synth.

El. B.

D. Set

D. Set

D. Set

D. Set

33

37

El. Guit.

El. Guit.

El. Guit.

El. Guit.

Synth.

El. B.

D. Set

D. Set

D. Set

D. Set

The musical score for page 13, starting at measure 37, is written for a multi-instrument ensemble. The key signature is one flat (B-flat). The score includes staves for four Electric Guitars (El. Guit.), a Synthesizer (Synth.), an Electric Bass (El. B.), and four Drums (D. Set). The Electric Guitars (staves 1-4) play a melodic line consisting of eighth and sixteenth notes, with some staccato markings. The Synthesizer (staff 5) is silent. The Electric Bass (staff 6) plays a rhythmic pattern of eighth and sixteenth notes. The Drums (staves 7-10) play a steady quarter-note pattern. The score is divided into four measures, each containing a repeat sign.

41

El. Guit.

El. Guit.

El. Guit.

El. Guit.

Synth.

El. B.

D. Set

D. Set

D. Set

D. Set

44

El. Guit.

El. Guit.

El. Guit.

El. Guit.

Synth.

El. B.

D. Set

D. Set

D. Set

D. Set

47

El. Guit.

El. Guit.

El. Guit.

El. Guit.

Synth.

El. B.

D. Set

D. Set

D. Set

D. Set



51

El. Guit.

El. Guit.

El. Guit.

El. Guit.

Synth.

El. B.

D. Set

D. Set

D. Set

D. Set

The musical score for page 17, measure 51, features four staves. The first four staves are for Electric Guitar (El. Guit.), the fifth for Synthesizer (Synth.), the sixth for Electric Bass (El. B.), and the last four for Drum Set (D. Set). The key signature is one flat (B-flat). The first four staves of El. Guit. show a melodic line with eighth and sixteenth notes, while the Synth. staff is silent. The El. B. staff provides a bass line with eighth and sixteenth notes. The D. Set staves show a drum pattern with eighth and sixteenth notes.

55

El. Guit.

El. Guit.

El. Guit.

El. Guit.

Synth.

El. B.

D. Set

D. Set

D. Set

D. Set

59

El. Guit.

El. Guit.

El. Guit.

El. Guit.

Synth.

El. B.

D. Set

D. Set

D. Set

D. Set

The musical score for page 19 begins at measure 59. It consists of ten staves. The first five staves are for electric guitar (El. Guit.), the sixth is for synth (Synth.), the seventh is for electric bass (El. B.), and the last four are for drum set (D. Set). The key signature has one flat (B-flat). The electric guitar parts are written in treble clef. The electric bass part is written in bass clef. The synth part is written in treble clef. The drum set parts are written in a simplified notation with vertical strokes and flags. The first staff of the drum set has a pattern of eighth notes, while the others are mostly rests.

62

El. Guit.

El. Guit.

El. Guit.

El. Guit.

Synth.

El. B.

D. Set

D. Set

D. Set

D. Set

65

El. Guit.

El. Guit.

El. Guit.

El. Guit.

Synth.

El. B.

D. Set

D. Set

D. Set

D. Set

68

El. Guit.

El. Guit.

El. Guit.

El. Guit.

Synth.

El. B.

D. Set

D. Set

D. Set

D. Set

The musical score for measures 68-70 is written for a multi-instrument ensemble. The score is organized into four systems, each containing four staves. The first system includes an electric guitar (El. Guit.) and a synthesizer (Synth.) part, both featuring melodic lines with eighth and sixteenth notes. The second system includes an electric bass (El. B.) part with a bass line of eighth notes, and a drum set (D. Set) part with a pattern of eighth notes and rests. The third and fourth systems each contain two drum set (D. Set) parts, each with a pattern of eighth notes and rests. The key signature is one flat (Bb), and the time signature is 4/4. The measure number 68 is indicated at the beginning of the first staff.

71

El. Guit.

El. Guit.

El. Guit.

El. Guit.

Synth.

El. B.

D. Set

D. Set

D. Set

D. Set

75

El. Guit.

El. Guit.

El. Guit.

El. Guit.

Synth.

El. B.

D. Set

D. Set

D. Set

D. Set



79

El. Guit.

El. Guit.

El. Guit.

El. Guit.

Synth.

El. B.

D. Set

D. Set

D. Set

D. Set

The musical score for page 25, starting at measure 79, is arranged for a five-piece band. The instrumentation includes five electric guitars, a synthesizer, an electric bass, and a drum set. The key signature is one flat (B-flat). The electric guitar parts are written in treble clef, while the electric bass is in bass clef. The drum set parts are written in a simplified notation using vertical strokes and flags. The score consists of four measures. The first measure (79) shows the beginning of the piece, with the electric guitar playing a melodic line and the electric bass playing a steady eighth-note pattern. The subsequent measures continue the melodic and rhythmic development of the piece.

83

El. Guit.

El. Guit.

El. Guit.

El. Guit.

Synth.

El. B.

D. Set

D. Set

D. Set

D. Set

86

El. Guit.

El. Guit.

El. Guit.

El. Guit.

Synth.

El. B.

D. Set

D. Set

D. Set

D. Set

The musical score for page 27, starting at measure 86, is arranged in ten staves. The first four staves are for Electric Guitar (El. Guit.), the fifth for Synthesizer (Synth.), the sixth for Electric Bass (El. B.), and the last four for Drum Set (D. Set). The Electric Guitar parts include melodic lines and arpeggiated figures. The Synthesizer part has a simple melodic line. The Electric Bass part plays a steady eighth-note pattern. The Drum Set parts show a mix of active drumming and rests.

89

El. Guit.

El. Guit.

El. Guit.

El. Guit.

Synth.

El. B.

D. Set

D. Set

D. Set

D. Set

89

El. Guit.

El. Guit.

El. Guit.

El. Guit.

Synth.

El. B.

D. Set

D. Set

D. Set

D. Set

92

El. Guit.

El. Guit.

El. Guit.

El. Guit.

Synth.

El. B.

D. Set

D. Set

D. Set

D. Set

The musical score for page 29, measures 92-94, is as follows:

- El. Guit. (Staff 1):** Treble clef, key of B-flat. Measure 92: quarter note B-flat, quarter note D, quarter note F, quarter note A. Measure 93: whole rest. Measure 94: quarter note B-flat, quarter note D, quarter note F, quarter note A.
- El. Guit. (Staff 2):** Treble clef, key of B-flat. Measure 92: eighth rest, eighth note B-flat, eighth note D, eighth note F, eighth note A, eighth note B-flat, eighth note D, eighth note F, eighth note A. Measure 93: eighth rest, eighth note B-flat, eighth note D, eighth note F, eighth note A, eighth note B-flat, eighth note D, eighth note F, eighth note A. Measure 94: eighth rest, eighth note B-flat, eighth note D, eighth note F, eighth note A, eighth note B-flat, eighth note D, eighth note F, eighth note A.
- El. Guit. (Staff 3):** Treble clef, key of B-flat. Measure 92: whole rest. Measure 93: whole rest. Measure 94: whole rest.
- El. Guit. (Staff 4):** Treble clef, key of B-flat. Measure 92: whole rest. Measure 93: whole rest. Measure 94: whole rest.
- Synth. (Staff 5):** Treble clef, key of B-flat. Measure 92: quarter note B-flat, quarter note D, quarter note F, quarter note A. Measure 93: whole rest. Measure 94: quarter note B-flat, quarter note D, quarter note F, quarter note A.
- El. B. (Staff 6):** Bass clef, key of B-flat. Measure 92: eighth note B-flat, eighth note D, eighth note F, eighth note A, eighth note B-flat, eighth note D, eighth note F, eighth note A. Measure 93: eighth note B-flat, eighth note D, eighth note F, eighth note A, eighth note B-flat, eighth note D, eighth note F, eighth note A. Measure 94: eighth note B-flat, eighth note D, eighth note F, eighth note A, eighth note B-flat, eighth note D, eighth note F, eighth note A.
- D. Set (Staff 7):** Treble clef, key of B-flat. Measure 92: quarter rest, quarter note B-flat, quarter rest, quarter note D. Measure 93: quarter rest, quarter note B-flat, quarter rest, quarter note D. Measure 94: quarter rest, quarter note B-flat, quarter rest, quarter note D.
- D. Set (Staff 8):** Treble clef, key of B-flat. Measure 92: whole rest. Measure 93: whole rest. Measure 94: whole rest.
- D. Set (Staff 9):** Treble clef, key of B-flat. Measure 92: whole rest. Measure 93: whole rest. Measure 94: whole rest.
- D. Set (Staff 10):** Treble clef, key of B-flat. Measure 92: whole rest. Measure 93: whole rest. Measure 94: whole rest.

95

El. Guit.

El. Guit.

El. Guit.

El. Guit.

Synth.

El. B.

D. Set

D. Set

D. Set

D. Set

98

El. Guit.

El. Guit.

El. Guit.

El. Guit.

Synth.

El. B.

D. Set

D. Set

D. Set

D. Set

Detailed description of the musical score: The score is for measures 98, 99, and 100. Measure 98: El. Guit. 1 (treble clef, key of Bb) plays a quarter note Bb, a dotted quarter note D, and a quarter note F. El. Guit. 2 (treble clef, key of Bb) has a whole rest, followed by a half note Bb, a half note D, and a quarter note F. Synth. (treble clef, key of Bb) plays a quarter note Bb, a dotted quarter note D, and a quarter note F. El. B. (bass clef, key of Bb) plays a half note Bb, a half note D, and a quarter note F. D. Set 1 (bass clef) has a whole rest, followed by a half note Bb, a half note D, and a quarter note F. D. Set 2, 3, and 4 have whole rests. Measure 99: El. Guit. 1 and 2 have whole rests. Synth. has a whole rest. El. B. has a whole rest. D. Set 1 has a whole rest. D. Set 2, 3, and 4 have whole rests. Measure 100: All instruments have whole rests.