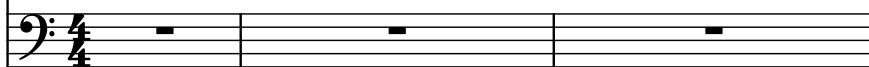


♩ = 100

Electric Bass, Bass



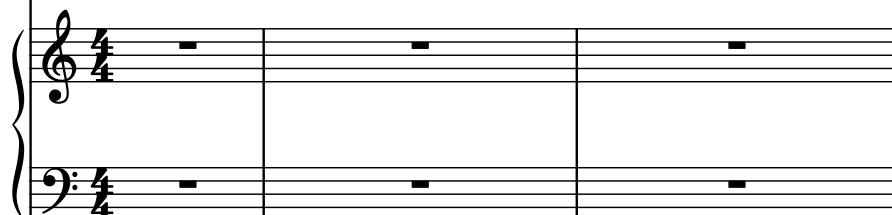
Effect Synthesizer, Synth Bass



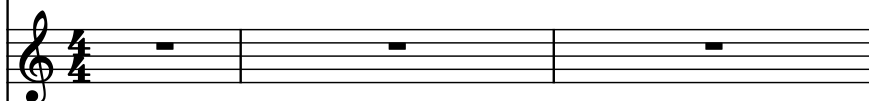
Violoncello, Pizzicato Strings



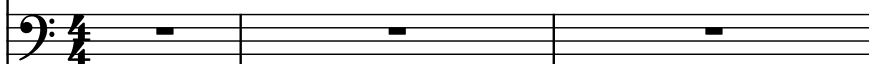
Piano, Piano



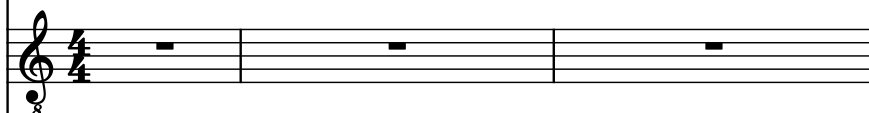
Strings, Pads



Brass Synthesizer, Orchestra Hit



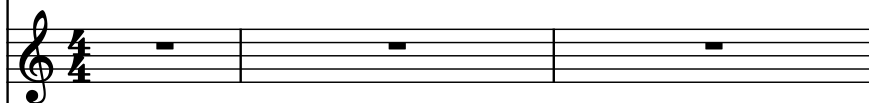
Acoustic Guitar, Muted Guitar



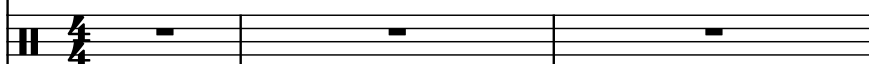
Soprano, Choir Aahs



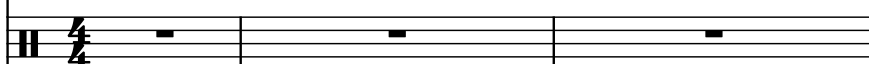
Sine Synthesizer, Melody



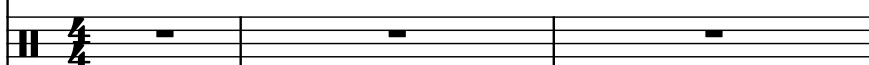
Drumset, Drums



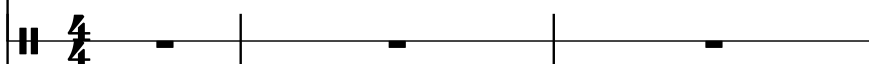
Drumset, HiHat



Drumset, High Q



Concert Snare Drum, Taiko Drums



Sine Synthesizer, Background Vocals



El. B.

Synth.

Vc.

Pno.

St.

Synth.

Guit.

S.

Synth.

D. Set

D. Set

D. Set

Con. Sn.

Synth.

The musical score for page 2, measure 4, features the following parts:

- El. B. (Electric Bass):** Bass clef. Notes: Quarter note G2, eighth note A2, eighth note B2, quarter note C3, quarter note D3, quarter note E3, quarter note F3, quarter note G3.
- Synth. (Synthesizer):** Bass clef. Rest.
- Vc. (Violoncello):** Bass clef. Notes: Quarter note G2, eighth note A2, eighth note B2, quarter note C3, quarter note D3, quarter note E3, quarter note F3, quarter note G3.
- Pno. (Piano):** Treble and Bass clefs. Rest.
- St. (Strings):** Treble clef. Rest.
- Synth. (Synthesizer):** Bass clef. Rest.
- Guit. (Guitar):** Treble clef. Notes: Quarter note G2, eighth note A2, eighth note B2, quarter note C3, quarter note D3, quarter note E3, quarter note F3, quarter note G3.
- S. (Saxophone):** Treble clef. Notes: Quarter note G2, eighth note A2, eighth note B2, quarter note C3, quarter note D3, quarter note E3, quarter note F3, quarter note G3.
- Synth. (Synthesizer):** Treble clef. Rest.
- D. Set (Drum Set):** Drum clef. Notes: Quarter note G2, eighth note A2, eighth note B2, quarter note C3, quarter note D3, quarter note E3, quarter note F3, quarter note G3.
- D. Set (Drum Set):** Drum clef. Rest.
- D. Set (Drum Set):** Drum clef. Rest.
- Con. Sn. (Contra Snare):** Drum clef. Rest.
- Synth. (Synthesizer):** Treble clef. Rest.

7

El. B.

Synth.

Vc.

Pno.

St.

Synth.

Guit.

S.

Synth.

D. Set

D. Set

D. Set

Con. Sn.

Synth.

8

El. B.

Synth.

Vc.

Pno.

St.

Synth.

Guit.

S.

Synth.

D. Set

D. Set

D. Set

Con. Sn.

Synth.

11

12

13

14

15

16

17

18

19

20

21

22

23

24

25

26

27

28

29

30

31

32

33

34

35

36

37

38

39

40

41

42

43

44

45

46

47

48

49

50

51

52

53

54

55

56

57

58

59

60

61

62

63

64

65

66

67

68

69

70

71

72

73

74

75

76

77

78

79

80

81

82

83

84

85

86

87

88

89

90

91

92

93

94

95

96

97

98

99

100

101

102

103

104

105

106

107

108

109

110

111

112

113

114

115

116

117

118

119

120

121

122

123

124

125

126

127

128

129

130

131

132

133

134

135

136

137

138

139

140

141

142

143

144

145

146

147

148

149

150

151

152

153

154

155

156

157

158

159

160

161

162

163

164

165

166

167

168

169

170

171

172

173

174

175

176

177

178

179

180

181

182

183

184

185

186

187

188

189

190

191

192

193

194

195

196

197

198

199

200

201

202

203

204

205

206

207

208

209

210

211

212

213

214

215

216

217

218

219

220

221

222

223

224

225

226

227

228

229

230

231

232

233

234

235

236

237

238

239

240

241

242

243

244

245

246

247

248

249

250

251

252

253

254

255

256

257

258

259

260

261

262

263

264

265

266

267

268

269

270

271

272

273

274

275

276

277

278

279

280

281

282

283

284

285

286

287

288

289

290

291

292

293

294

295

296

297

298

299

300

301

302

303

304

305

306

307

308

309

310

311

312

313

314

315

316

317

318

319

320

321

322

323

324

325

326

327

328

329

330

331

332

333

334

335

336

337

338

339

340

341

342

343

344

345

346

347

348

349

350

351

352

353

354

355

356

357

358

359

360

361

362

363

364

365

366

367

368

369

370

371

372

373

374

375

376

377

378

379

380

381

382

383

384

385

386

387

388

389

390

391

392

393

394

395

396

397

398

399

400

401

402

403

404

405

406

407

408

409

410

411

412

413

414

415

416

417

418

419

420

421

422

423

424

425

426

427

428

429

430

431

432

433

434

435

436

437

438

439

440

441

442

443

444

445

446

447

448

449

450

451

452

453

454

455

456

457

458

459

460

461

462

463

464

465

466

467

468

469

470

471

472

473

474

475

476

477

478

479

480

481

482

483

484

485

486

487

488

489

490

491

492

493

494

495

496

497

498

499

500

501

502

503

504

505

506

507

508

509

510

511

512

513

514

515

516

517

518

519

520

521

522

523

524

525

526

527

528

529

530

531

532

533

534

535

536

537

538

539

540

541

542

543

544

545

546

547

548

549

550

551

552

553

554

555

556

557

558

559

560

561

562

563

564

565

566

567

568

569

570

571

572

573

574

575

576

577

578

579

580

581

582

583

584

585

586

587

588

589

590

591

592

593

594

595

596

597

598

599

600

601

602

603

604

605

606

607

608

609

610

611

612

613

614

615

616

617

618

619

620

621

622

623

624

625

626

627

628

629

630

631

632

633

634

635

636

637

638

639

640

641

642

643

644

645

646

647

648

649

650

651

652

653

654

655

656

657

658

659

660

661

662

663

664

665

666

667

668

669

670

671

672

673

674

675

676

677

678

679

680

681

682

683

684

685

686

687

688

689

690

691

692

693

694

695

696

697

698

699

700

701

702

703

704

705

706

707

708

709

710

711

712

713

714

715

716

717

718

719

720

721

722

723

724

725

726

727

728

729

730

731

732

733

734

735

736

737

738

739

740

741

742

743

744

745

746

747

748

749

750

751

752

753

754

755

756

757

758

759

760

761

762

763

764

765

766

767

768

769

770

771

772

773

774

775

776

777

778

779

780

781

782

783

784

785

786

787

788

789

790

791

792

793

794

795

796

797

798

799

800

801

802

803

804

805

806

807

808

809

810

811

812

813

814

815

816

817

818

819

820

821

822

823

824

825

826

827

828

829

830

831

832

833

834

835

836

837

838

839

840

841

842

843

844

845

846

847

848

849

850

851

852

853

854

855

856

857

858

859

860

861

862

863

864

865

866

867

868

869

870

871

872

873

874

875

876

877

878

879

880

881

882

883

884

885

886

887

888

889

890

891

892

893

894

895

896

897

898

899

900

901

902

903

904

905

906

907

908

909

910

911

912

913

914

915

916

917

918

919

920

921

922

923

924

925

926

927

928

929

930

931

932

933

934

935

936

937

938

939

940

941

942

943

944

945

946

947

948

949

950

951

952

953

954

955

956

957

958

959

960

961

962

963

964

965

966

967

968

969

970

971

972

973

974

975

976

977

978

979

980

981

982

983

984

985

986

987

988

989

990

991

992

993

994

995

996

997

998

999

1000

14

El. B.

Synth.

Vc.

Pno.

St.

Synth.

Guit.

S.

Synth.

D. Set

D. Set

D. Set

Con. Sn.

Synth.

Redownload from www.midcities.com

El. B.

Synth.

Vc.

Pno.

St.

Synth.

Guit.

S.

Synth.

D. Set

D. Set

D. Set

Con. Sn.

Synth.

The musical score for page 17 is arranged in a multi-staff format. The instruments and their parts are as follows:

- El. B. (Electric Bass):** Plays a melodic line in the bass clef, featuring eighth and quarter notes with some rests.
- Synth. (Synthesizer):** Remains silent throughout the measures shown.
- Vc. (Violoncello):** Mirrors the El. B. part, playing a similar melodic line in the bass clef.
- Pno. (Piano):** Features a complex part with both treble and bass staves. The right hand plays a series of eighth notes, while the left hand plays chords and moving lines.
- St. (Strings):** Plays a sustained chord in the treble clef, with a long note value spanning multiple measures.
- Synth. (Synthesizer):** Plays a melodic line in the treble clef, consisting of eighth and quarter notes.
- Guit. (Guitar):** Remains silent throughout the measures shown.
- S. (Saxophone):** Remains silent throughout the measures shown.
- Synth. (Synthesizer):** Plays a melodic line in the treble clef, consisting of eighth and quarter notes.
- D. Set (Drum Set):** The first staff shows a pattern of eighth notes and rests, with some notes marked with an 'x'. The second staff shows a series of 'x' marks, likely representing a specific drum pattern.
- D. Set (Drum Set):** Remains silent throughout the measures shown.
- D. Set (Drum Set):** Remains silent throughout the measures shown.
- Con. Sn. (Contra Snare):** Remains silent throughout the measures shown.
- Synth. (Synthesizer):** Remains silent throughout the measures shown.

20

El. B.

Synth.

Vc.

Pno.

St.

Synth.

Guit.

S.

Synth.

D. Set

D. Set

D. Set

Con. Sn.

Synth.

Pdf downloaded from www.midicities.com

26

El. B.

Synth.

Vc.

Pno.

St.

Synth.

Guit.

S.

Synth.

D. Set

D. Set

D. Set

Con. Sn.

Synth.

The musical score for page 26 consists of 13 staves. The first staff (El. B.) and third staff (Vc.) contain a repeating eighth-note pattern. The second staff (Synth.) is empty. The fourth staff (Pno.) features a continuous eighth-note accompaniment. The fifth staff (St.) is empty. The sixth staff (Synth.) is empty. The seventh staff (Guit.) has a short eighth-note phrase followed by a rest. The eighth staff (S.) is empty. The ninth staff (Synth.) has a short eighth-note phrase followed by a rest. The tenth staff (D. Set) features a repeating eighth-note pattern with a star symbol above the first measure. The eleventh staff (D. Set) has a series of 'x' marks indicating a rhythmic pattern. The twelfth staff (D. Set) is empty. The thirteenth staff (Con. Sn.) is empty. The fourteenth staff (Synth.) is empty.

El. B.

Synth.

Vc.

Pno.

St.

Synth.

Guit.

S.

Synth.

D. Set

D. Set

D. Set

Con. Sn.

Synth.

The musical score for page 29 is arranged in a multi-staff format. The instruments and their parts are as follows:

- El. B. (Electric Bass):** Plays a rhythmic pattern of eighth notes and rests in the bass clef.
- Synth. (Synthesizer):** Silent in this section.
- Vc. (Violoncello):** Plays a rhythmic pattern of eighth notes and rests in the bass clef.
- Pno. (Piano):** Plays a complex pattern of eighth notes and rests in the treble and bass clefs.
- St. (Strings):** Silent in the first measure, then plays a few notes in the second and third measures.
- Synth. (Synthesizer):** Silent in this section.
- Guit. (Guitar):** Silent in this section.
- S. (Saxophone):** Silent in this section.
- Synth. (Synthesizer):** Plays a melodic line in the treble clef.
- D. Set (Drum Set):** Plays a rhythmic pattern of eighth notes and rests in the bass clef.
- D. Set (Drum Set):** Silent in this section.
- D. Set (Drum Set):** Silent in this section.
- Con. Sn. (Contra Snare):** Silent in this section.
- Synth. (Synthesizer):** Silent in this section.

32

El. B.

Synth.

Vc.

Pno.

St.

Synth.

Guit.

S.

Synth.

D. Set

D. Set

D. Set

Con. Sn.

Synth.

El. B. staff: Bass clef, 4/4 time. Measure 32 contains a half note G2, a quarter note A2, a quarter rest, and a quarter note B2. Measure 33 contains a whole rest. Measure 34 contains a half note G2, a quarter note A2, a quarter rest, and a quarter note B2.

Synth. staff: Bass clef. Measure 32 contains a whole rest. Measure 33 contains a whole rest. Measure 34 contains a whole rest.

Vc. staff: Bass clef, 4/4 time. Measure 32 contains a half note G2, a quarter note A2, a quarter rest, and a quarter note B2. Measure 33 contains a whole rest. Measure 34 contains a half note G2, a quarter note A2, a quarter rest, and a quarter note B2.

Pno. staff: Treble and Bass clefs. Measure 32 contains a half note G2 in the bass and a half note G4 in the treble. Measure 33 contains a whole rest in both staves. Measure 34 contains a half note G2 in the bass and a half note G4 in the treble.

St. staff: Treble clef. Measure 32 contains a whole rest. Measure 33 contains a whole rest. Measure 34 contains a whole rest.

Synth. staff: Bass clef. Measure 32 contains a whole rest. Measure 33 contains a whole rest. Measure 34 contains a half note G2, a quarter rest, and a quarter note B2.

Guit. staff: Treble clef. Measure 32 contains a whole rest. Measure 33 contains a whole rest. Measure 34 contains a whole rest.

S. staff: Treble clef. Measure 32 contains a whole rest. Measure 33 contains a whole rest. Measure 34 contains a whole rest.

Synth. staff: Treble clef. Measure 32 contains a half note G4, a quarter note A4, a quarter rest, and a quarter note B4. Measure 33 contains a half note G4, a quarter rest, and a quarter note B4. Measure 34 contains a half note G4, a quarter note A4, a quarter rest, and a quarter note B4.

D. Set staff: Treble clef. Measure 32 contains a half note G4, a quarter note A4, a quarter rest, and a quarter note B4. Measure 33 contains a half note G4, a quarter rest, and a quarter note B4. Measure 34 contains a half note G4, a quarter note A4, a quarter rest, and a quarter note B4.

D. Set staff: Treble clef. Measure 32 contains a half note G4, a quarter note A4, a quarter rest, and a quarter note B4. Measure 33 contains a half note G4, a quarter rest, and a quarter note B4. Measure 34 contains a half note G4, a quarter note A4, a quarter rest, and a quarter note B4.

D. Set staff: Treble clef. Measure 32 contains a half note G4, a quarter note A4, a quarter rest, and a quarter note B4. Measure 33 contains a half note G4, a quarter rest, and a quarter note B4. Measure 34 contains a half note G4, a quarter note A4, a quarter rest, and a quarter note B4.

Con. Sn. staff: Treble clef. Measure 32 contains a whole rest. Measure 33 contains a whole rest. Measure 34 contains a whole rest.

Synth. staff: Treble clef. Measure 32 contains a whole rest. Measure 33 contains a whole rest. Measure 34 contains a half note G4, a quarter note A4, a quarter rest, and a quarter note B4.

El. B.

Synth.

Vc.

Pno.

St.

Synth.

Guit.

S.

Synth.

D. Set

D. Set

D. Set

Con. Sn.

Synth.

The musical score for page 35 is arranged in a multi-staff format. The instruments and their parts are as follows:

- El. B. (Electric Bass):** Plays a melodic line in the bass clef, featuring eighth and quarter notes with occasional rests.
- Synth. (Synthesizer):** Remains mostly silent, with a few notes appearing in the final measure.
- Vc. (Violoncello):** Mirrors the El. B. part, playing a similar melodic line in the bass clef.
- Pno. (Piano):** Features a complex accompaniment in the treble clef, consisting of rapid sixteenth-note runs and chords.
- St. (Strings):** Plays sustained chords in the treble clef, with some movement in the final measure.
- Synth. (Synthesizer):** Remains silent throughout the piece.
- Guit. (Guitar):** Remains silent throughout the piece.
- S. (Saxophone):** Remains silent throughout the piece.
- Synth. (Synthesizer):** Plays a melodic line in the treble clef, featuring eighth and quarter notes.
- D. Set (Drum Set):** Provides a rhythmic foundation with a pattern of eighth and quarter notes, including snare and kick drum sounds.
- D. Set (Drum Set):** Provides a rhythmic foundation with a pattern of eighth and quarter notes, including snare and kick drum sounds.
- D. Set (Drum Set):** Provides a rhythmic foundation with a pattern of eighth and quarter notes, including snare and kick drum sounds.
- Con. Sn. (Contra Snare):** Remains silent throughout the piece.
- Synth. (Synthesizer):** Plays a melodic line in the treble clef, featuring eighth and quarter notes.

38

El. B.

Synth.

Vc.

Pno.

St.

Synth.

Guit.

S.

Synth.

D. Set

D. Set

D. Set

Con. Sn.

Synth.

The musical score for page 38 features a variety of instruments. The Electric Bass (El. B.), Violoncello (Vc.), and Piano (Pno.) parts are active throughout the measures. The Piano part consists of a continuous eighth-note pattern in the right hand and a block-chord pattern in the left hand. The String (St.) part features a long, sustained chord in the first measure, which is then held over into the second measure. The Synth. parts are mostly inactive, with some activity in the lower Synth. part in the first measure. The Guit. and S. parts are also inactive. The D. Set parts are active, with the top D. Set part featuring a complex rhythmic pattern and the bottom D. Set part featuring a simple rhythmic pattern. The Con. Sn. part is inactive. The Synth. part at the bottom is also inactive.

El. B.

Synth.

Vc.

Pno.

St.

Synth.

Guit.

S.

Synth.

D. Set

D. Set

D. Set

Con. Sn.

Synth.

The musical score for page 41 is arranged in a multi-staff format. The instruments and their parts are as follows:

- El. B. (Electric Bass):** Written in bass clef, featuring a melodic line with eighth and quarter notes, including a sharp sign (#).
- Synth. (Synthesizer):** Two staves, both in bass clef, containing whole rests for the duration of the measures.
- Vc. (Violoncello):** Written in bass clef, mirroring the melodic line of the Electric Bass.
- Pno. (Piano):** A grand staff with treble and bass clefs. The right hand plays a continuous eighth-note arpeggiated pattern. The left hand plays chords and moving lines, including a section with a sharp sign (#).
- St. (Strings):** Written in treble clef, featuring a sustained chord with a sharp sign (#) and a long, sweeping melodic line.
- Synth. (Synthesizer):** Written in treble clef, featuring a melodic line with eighth and quarter notes.
- Guit. (Guitar):** Written in treble clef, containing whole rests.
- S. (Saxophone):** Written in treble clef, containing whole rests.
- D. Set (Drum Set):** Three staves in percussion clef. The first staff shows a complex drum pattern with various note values and rests. The second and third staves show simpler patterns, including a section with a sharp sign (#).
- Con. Sn. (Contra Snare):** Written in percussion clef, containing whole rests.
- Synth. (Synthesizer):** Written in treble clef, containing whole rests.

44

El. B.

Synth.

Vc.

Pno.

St.

Synth.

Guit.

S.

Synth.

D. Set

D. Set

D. Set

Con. Sn.

Synth.

El. B. staff: Bass clef, 4/4 time. Measure 44: Quarter note G2, eighth note A2, eighth note B2, quarter note C3, quarter rest, quarter rest, quarter rest.

Synth. staff: Bass clef, 4/4 time. Measure 44: Quarter rest, quarter rest, eighth note D3, eighth note E3, quarter rest, quarter rest.

Vc. staff: Bass clef, 4/4 time. Measure 44: Quarter note G2, eighth note A2, eighth note B2, quarter note C3, quarter rest, quarter rest, quarter rest.

Pno. staff: Treble and Bass clefs, 4/4 time. Measure 44: Treble clef has eighth notes G4, A4, B4, C5. Bass clef has eighth notes G2, A2, B2, C3. Measure 45: Treble clef has quarter rest, Bass clef has quarter rest.

St. staff: Treble clef, 4/4 time. Measure 44: Eighth rest, eighth note G4, quarter rest, quarter rest, quarter rest, quarter rest.

Synth. staff: Bass clef, 4/4 time. Measure 44: Quarter rest, quarter rest, quarter rest, quarter rest, quarter rest, quarter rest.

Guit. staff: Treble clef, 4/4 time. Measure 44: Quarter rest, quarter rest, quarter rest, quarter rest, quarter rest, quarter rest.

S. staff: Treble clef, 4/4 time. Measure 44: Quarter rest, quarter rest, quarter rest, quarter rest, quarter rest, quarter rest.

Synth. staff: Treble clef, 4/4 time. Measure 44: Quarter note G4, eighth note A4, eighth note B4, quarter note C5, quarter rest, quarter rest, quarter rest.

D. Set staff: Drum notation, 4/4 time. Measure 44: Quarter rest, quarter note G, quarter rest, quarter note A, quarter rest, quarter note B, quarter rest, quarter note C, quarter rest.

D. Set staff: Drum notation, 4/4 time. Measure 44: Quarter rest, quarter note G, quarter rest, quarter note A, quarter rest, quarter note B, quarter rest, quarter note C, quarter rest.

D. Set staff: Drum notation, 4/4 time. Measure 44: Quarter rest, quarter note G, quarter rest, quarter note A, quarter rest, quarter note B, quarter rest, quarter note C, quarter rest.

Con. Sn. staff: Drum notation, 4/4 time. Measure 44: Quarter rest, quarter rest, quarter rest, quarter rest, quarter rest, quarter rest.

Synth. staff: Treble clef, 4/4 time. Measure 44: Quarter rest, quarter rest, quarter rest, quarter rest, quarter rest, quarter rest.

El. B.

Synth.

Vc.

Pno.

St.

Synth.

Guit.

S.

Synth.

D. Set

D. Set

D. Set

Con. Sn.

Synth.

48

49

50

51

52

53

54

55

56

57

58

59

60

61

62

63

64

65

66

67

68

69

70

71

72

73

74

75

76

77

78

79

80

81

82

83

84

85

86

87

88

89

90

91

92

93

94

95

96

97

98

99

100

101

102

103

104

105

106

107

108

109

110

111

112

113

114

115

116

117

118

119

120

121

122

123

124

125

126

127

128

129

130

131

132

133

134

135

136

137

138

139

140

141

142

143

144

145

146

147

148

149

150

151

152

153

154

155

156

157

158

159

160

161

162

163

164

165

166

167

168

169

170

171

172

173

174

175

176

177

178

179

180

181

182

183

184

185

186

187

188

189

190

191

192

193

194

195

196

197

198

199

200

201

202

203

204

205

206

207

208

209

210

211

212

213

214

215

216

217

218

219

220

221

222

223

224

225

226

227

228

229

230

231

232

233

234

235

236

237

238

239

240

241

242

243

244

245

246

247

248

249

250

251

252

253

254

255

256

257

258

259

260

261

262

263

264

265

266

267

268

269

270

271

272

273

274

275

276

277

278

279

280

281

282

283

284

285

286

287

288

289

290

291

292

293

294

295

296

297

298

299

300

301

302

303

304

305

306

307

308

309

310

311

312

313

314

315

316

317

318

319

320

321

322

323

324

325

326

327

328

329

330

331

332

333

334

335

336

337

338

339

340

341

342

343

344

345

346

347

348

349

350

351

352

353

354

355

356

357

358

359

360

361

362

363

364

365

366

367

368

369

370

371

372

373

374

375

376

377

378

379

380

381

382

383

384

385

386

387

388

389

390

391

392

393

394

395

396

397

398

399

400

401

402

403

404

405

406

407

408

409

410

411

412

413

414

415

416

417

418

419

420

421

422

423

424

425

426

427

428

429

430

431

432

433

434

435

436

437

438

439

440

441

442

443

444

445

446

447

448

449

450

451

452

453

454

455

456

457

458

459

460

461

462

463

464

465

466

467

468

469

470

471

472

473

474

475

476

477

478

479

480

481

482

483

484

485

486

487

488

489

490

491

492

493

494

495

496

497

498

499

500

501

502

503

504

505

506

507

508

509

510

511

512

513

514

515

516

517

518

519

520

521

522

523

524

525

526

527

528

529

530

531

532

533

534

535

536

537

538

539

540

541

542

543

544

545

546

547

548

549

550

551

552

553

554

555

556

557

558

559

560

561

562

563

564

565

566

567

568

569

570

571

572

573

574

575

576

577

578

579

580

581

582

583

584

585

586

587

588

589

590

591

592

593

594

595

596

597

598

599

600

601

602

603

604

605

606

607

608

609

610

611

612

613

614

615

616

617

618

619

620

621

622

623

624

625

626

627

628

629

630

631

632

633

634

635

636

637

638

639

640

641

642

643

644

645

646

647

648

649

650

651

652

653

654

655

656

657

658

659

660

661

662

663

664

665

666

667

668

669

670

671

672

673

674

675

676

677

678

679

680

681

682

683

684

685

686

687

688

689

690

691

692

693

694

695

696

697

698

699

700

701

702

703

704

705

706

707

708

709

710

711

712

713

714

715

716

717

718

719

720

721

722

723

724

725

726

727

728

729

730

731

732

733

734

735

736

737

738

739

740

741

742

743

744

745

746

747

748

749

750

751

752

753

754

755

756

757

758

759

760

761

762

763

764

765

766

767

768

769

770

771

772

773

774

775

776

777

778

779

780

781

782

783

784

785

786

787

788

789

790

791

792

793

794

795

796

797

798

799

800

801

802

803

804

805

806

807

808

809

810

811

812

813

814

815

816

817

818

819

820

821

822

823

824

825

826

827

828

829

830

831

832

833

834

835

836

837

838

839

840

841

842

843

844

845

846

847

848

849

850

851

852

853

854

855

856

857

858

859

860

861

862

863

864

865

866

867

868

869

870

871

872

873

874

875

876

877

878

879

880

881

882

883

884

885

886

887

888

889

890

891

892

893

894

895

896

897

898

899

900

901

902

903

904

905

906

907

908

909

910

911

912

913

914

915

916

917

918

919

920

921

922

923

924

925

926

927

928

929

930

931

932

933

934

935

936

937

938

939

940

941

942

943

944

945

946

947

948

949

950

951

952

953

954

955

956

957

958

959

960

961

962

963

964

965

966

967

968

969

970

971

972

973

974

975

976

977

978

979

980

981

982

983

984

985

986

987

988

989

990

991

992

993

994

995

996

997

998

999

1000

52

El. B.

Synth.

Vc.

Pno.

St.

Synth.

Guit.

S.

Synth.

D. Set

D. Set

D. Set

Con. Sn.

Synth.

El. B. staff: Bass clef, 4 measures. Measure 1: whole rest. Measure 2: whole rest. Measure 3: whole note G2. Measure 4: quarter note G2, quarter note A2.

Synth. staff: Bass clef, 4 measures. Measure 1: quarter note G2, quarter note F2, quarter note E2, quarter rest. Measure 2: whole rest. Measure 3: whole rest. Measure 4: whole rest.

Vc. staff: Bass clef, 4 measures. Measure 1: whole rest. Measure 2: whole rest. Measure 3: whole rest. Measure 4: whole rest.

Pno. staff: Grand staff (treble and bass clefs), 4 measures. Measure 1: whole rest. Measure 2: quarter rest, quarter note G2, quarter note F2, quarter note E2. Measure 3: quarter note D2, quarter note C2, quarter note B1, quarter note A1. Measure 4: quarter note G1, quarter note F1, quarter note E1, quarter note D1.

St. staff: Treble clef, 4 measures. Measure 1: whole rest. Measure 2: whole rest. Measure 3: whole note G2. Measure 4: quarter note G2, quarter note A2, quarter note B2.

Synth. staff: Bass clef, 4 measures. Measure 1: whole rest. Measure 2: whole rest. Measure 3: whole rest. Measure 4: whole rest.

Guit. staff: Treble clef, 4 measures. Measure 1: whole rest. Measure 2: whole rest. Measure 3: whole rest. Measure 4: whole rest.

S. staff: Treble clef, 4 measures. Measure 1: whole rest. Measure 2: whole rest. Measure 3: whole rest. Measure 4: whole rest.

Synth. staff: Treble clef, 4 measures. Measure 1: whole rest. Measure 2: whole rest. Measure 3: quarter note G2, quarter note F2, quarter note E2, quarter note D2. Measure 4: quarter note C2, quarter note B1, quarter note A1, quarter note G1.

D. Set staff: Treble clef, 4 measures. Measure 1: quarter note G2, quarter note F2, quarter note E2, quarter note D2. Measure 2: quarter note C2, quarter note B1, quarter note A1, quarter note G1. Measure 3: quarter note F1, quarter note E1, quarter note D1, quarter note C1. Measure 4: quarter note B1, quarter note A1, quarter note G1, quarter note F1.

D. Set staff: Treble clef, 4 measures. Measure 1: quarter note G2, quarter note F2, quarter note E2, quarter note D2. Measure 2: quarter note C2, quarter note B1, quarter note A1, quarter note G1. Measure 3: quarter note F1, quarter note E1, quarter note D1, quarter note C1. Measure 4: quarter note B1, quarter note A1, quarter note G1, quarter note F1.

D. Set staff: Treble clef, 4 measures. Measure 1: quarter note G2, quarter note F2, quarter note E2, quarter note D2. Measure 2: quarter note C2, quarter note B1, quarter note A1, quarter note G1. Measure 3: quarter note F1, quarter note E1, quarter note D1, quarter note C1. Measure 4: quarter note B1, quarter note A1, quarter note G1, quarter note F1.

Con. Sn. staff: Treble clef, 4 measures. Measure 1: whole rest. Measure 2: whole rest. Measure 3: whole rest. Measure 4: whole rest.

Synth. staff: Treble clef, 4 measures. Measure 1: whole rest. Measure 2: whole rest. Measure 3: quarter note G2, quarter note F2, quarter note E2, quarter note D2. Measure 4: quarter note C2, quarter note B1, quarter note A1, quarter note G1.

El. B.

Synth.

Vc.

Pno.

St.

Synth.

Guit.

S.

Synth.

D. Set

D. Set

D. Set

Con. Sn.

Synth.

Downloaded from www.midicities.com

59

El. B.

Synth.

Vc.

Pno.

St.

Synth.

Guit.

S.

Synth.

D. Set

D. Set

D. Set

Con. Sn.

Synth.

The musical score for page 59 features a variety of instruments. The Electric Bass (El. B.), Violoncello (Vc.), and Piano (Pno.) parts are active throughout the measures. The Piano part consists of two staves, with the right hand playing a melodic line and the left hand playing a rhythmic accompaniment. The String (St.) part features a long, sustained note in the first measure, followed by a change in the second measure. The Synth. parts are mostly silent, with some activity in the lower Synth. part in the third measure. The Guitar (Guit.) and Saxophone (S.) parts are also silent. The Drum Set (D. Set) parts are active, with the top staff showing a complex rhythmic pattern and the bottom staff showing a simpler pattern. The Conga Snare (Con. Sn.) part is silent. The Synth. part at the bottom is also silent.

62

El. B.

Synth.

Vc.

Pno.

St.

Synth.

Guit.

S.

Synth.

D. Set

D. Set

D. Set

Con. Sn.

Synth.

The musical score for page 62 features a variety of instruments. The Electric Bass (El. B.), Violoncello (Vc.), and Piano (Pno.) parts are active throughout the measures. The Piano part consists of a complex, multi-voiced texture with many notes. The String (St.) part features a long, sustained chord. The Synth. parts are mostly silent, with one Synth. part having some activity in the later measures. The Guitar (Guit.) and Saxophone (S.) parts are also silent. The Drum Set (D. Set) parts show a variety of rhythmic patterns, including a complex pattern in the first D. Set part and a simpler pattern in the second. The Con. Sn. part is silent. The final Synth. part is also silent.

El. B.

Synth.

Vc.

Pno.

St.

Synth.

Guit.

S.

Synth.

D. Set

D. Set

D. Set

Con. Sn.

Synth.

Downloaded from www.midicities.com

El. B.

Synth.

Vc.

Pno.

St.

Synth.

Guit.

S.

Synth.

D. Set

D. Set

D. Set

Con. Sn.

Synth.

The musical score for page 68 is arranged in a multi-staff format. The instruments and their parts are as follows:

- El. B. (Electric Bass):** Three measures of music in bass clef, featuring eighth and quarter notes with some accidentals.
- Synth. (Synthesizer):** Three measures of rests.
- Vc. (Violoncello):** Three measures of music in bass clef, mirroring the El. B. part.
- Pno. (Piano):** A grand staff with two staves. The right hand plays a continuous eighth-note pattern, while the left hand plays chords and single notes.
- St. (Strings):** Three measures of music in treble clef, featuring a sustained chord in the third measure.
- Synth. (Synthesizer):** Three measures of rests.
- Guit. (Guitar):** Three measures of rests.
- S. (Saxophone):** Three measures of rests.
- Synth. (Synthesizer):** Three measures of music in treble clef, featuring a melodic line with eighth notes.
- D. Set (Drum Set):** Three measures of music in treble clef, featuring a complex rhythmic pattern with many eighth notes.
- D. Set (Drum Set):** Three measures of music in treble clef, featuring a complex rhythmic pattern with many eighth notes.
- D. Set (Drum Set):** Three measures of rests.
- Con. Sn. (Contra Snare):** Three measures of rests.
- Synth. (Synthesizer):** Three measures of rests.

71

El. B.

Synth.

Vc.

Pno.

St.

Synth.

Guit.

S.

Synth.

D. Set

D. Set

D. Set

Con. Sn.

Synth.

The musical score for page 23, measure 71, is arranged in a multi-staff format. The instruments and their parts are as follows:

- El. B. (Electric Bass):** Plays a melodic line in the bass clef, starting with a dotted quarter note, followed by eighth notes and a quarter note.
- Synth. (Synthesizer):** Two staves, both showing whole rests.
- Vc. (Violoncello):** Plays a melodic line in the bass clef, mirroring the El. B. part.
- Pno. (Piano):** Two staves. The right hand plays a series of eighth notes in treble clef. The left hand plays a series of eighth notes in bass clef.
- St. (Strings):** Treble clef staff with a long, sustained note (possibly a pad or string) marked with a fermata.
- Synth. (Synthesizer):** Treble clef staff with a series of eighth notes and a quarter note.
- Guit. (Guitar):** Treble clef staff with a whole rest.
- S. (Saxophone):** Treble clef staff with a whole rest.
- Synth. (Synthesizer):** Treble clef staff with a series of eighth notes and a quarter note.
- D. Set (Drum Set):** Four staves. The first two staves show a pattern of eighth notes and quarter notes. The third and fourth staves show a pattern of eighth notes and quarter notes.
- D. Set (Drum Set):** Treble clef staff with a whole rest.
- D. Set (Drum Set):** Treble clef staff with a whole rest.
- Con. Sn. (Conga Snare):** Treble clef staff with a whole rest.
- Synth. (Synthesizer):** Treble clef staff with a whole rest.

73


 Pdf downloaded from www.midicities.com

75

El. B.

Synth.

Vc.

Pno.

St.

Synth.

Guit.

S.

Synth.

D. Set

D. Set

D. Set

Con. Sn.

Synth.

El. B.

Synth.

Vc.

Pno.

St.

Synth.

Guit.

S.

Synth.

D. Set

D. Set

D. Set

Con. Sn.

Synth.

The musical score for page 77 is arranged in a multi-staff format. The instruments and their parts are as follows:

- El. B. (Electric Bass):** Bass clef, featuring a melodic line with eighth and quarter notes, including a flat and a sharp.
- Synth. (Synthesizer):** Bass clef, with a whole rest in each of the three measures.
- Vc. (Violoncello):** Bass clef, mirroring the El. B. part with a melodic line.
- Pno. (Piano):** Treble and bass clefs. The right hand plays a continuous eighth-note arpeggiated pattern. The left hand plays a similar pattern, starting with a flat and sharp, then moving to a series of chords.
- St. (Strings):** Treble clef, featuring a chord progression with a sharp and a flat, followed by a sustained chord.
- Synth. (Synthesizer):** Bass clef, with a whole rest in each of the three measures.
- Guit. (Guitar):** Treble clef, with a whole rest in each of the three measures.
- S. (Saxophone):** Treble clef, with a whole rest in each of the three measures.
- Synth. (Synthesizer):** Treble clef, featuring a melodic line with eighth and quarter notes, including a sharp and a flat.
- D. Set (Drum Set):** Two staves. The top staff shows a pattern of eighth and quarter notes with a star symbol. The bottom staff shows a pattern of eighth notes with 'x' marks.
- D. Set (Drum Set):** Two staves, both with whole rests in each of the three measures.
- Con. Sn. (Conga Snare):** Two staves, both with whole rests in each of the three measures.
- Synth. (Synthesizer):** Treble clef, with a whole rest in each of the three measures.

Pdf downloaded from www.midicities.com