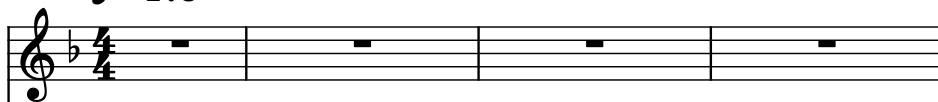
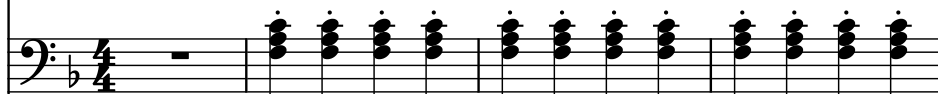


♩ = 175

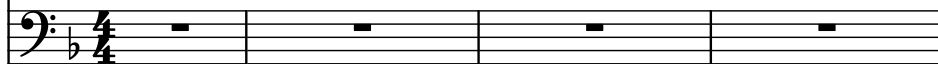
Flute, Melody



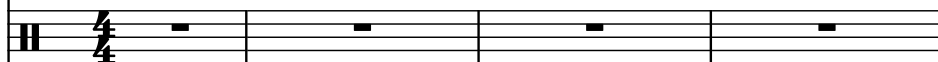
Piano, Piano



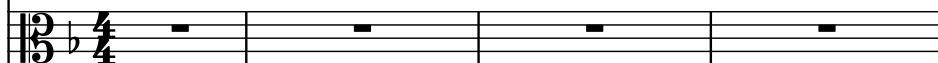
Electric Bass, Bass



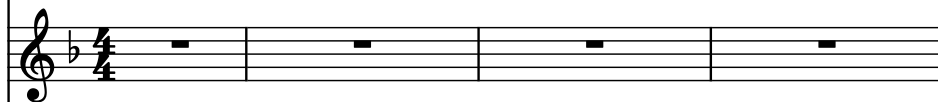
Drumset, Drums



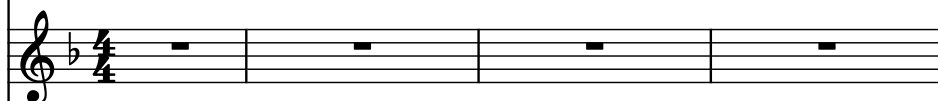
Violas, Strings



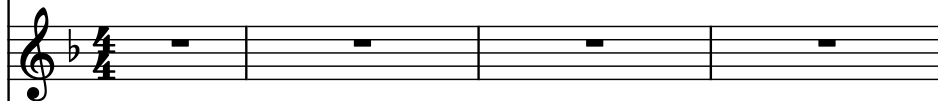
Effect Synthesizer, Caliope



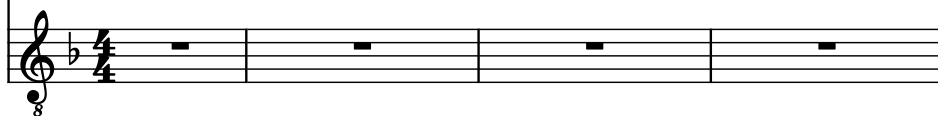
Voice, Choir



Pad Synthesizer, Blue Sky Synth



Electric Guitar, Lead Guitar



5

Fl.

Pno.

El. B.

D. Set

Vlas.

Synth.

Vo.

Synth.

El. Guit.

8

8

Fl.

Pno.

El. B.

D. Set

Vlas.

Synth.

Vo.

Synth.

El. Guit.

8

10

Fl.

Pno.

El. B.

D. Set

Vlas.

Synth.

Vo.

Synth.

El. Guit.

8

14

Fl.

Pno.

El. B.

D. Set

Vlas.

Synth.

Vo.

Synth.

El. Guit.

8

19

Fl.

Pno.

El. B.

D. Set

Vlas.

Synth.

Vo.

Synth.

El. Guit.

8

22

Fl.

Pno.

El. B.

D. Set

Vlas.

Synth.

Vo.

Synth.

El. Guit.

8

25

Fl.

Pno.

El. B.

D. Set

Vlas.

Synth.

Vo.

Synth.

El. Guit.



28

Fl.

Pno.

El. B.

D. Set

Vlas.

Synth.

Vo.

Synth.

El. Guit.

8

31

Fl.

Pno.

El. B.

D. Set

Vlas.

Synth.

Vo.

Synth.

El. Guit.

34

Fl.

Pno.

El. B.

D. Set

Vlas.

Synth.

Vo.

Synth.

El. Guit.

8

36

Fl.

Pno.

El. B.

D. Set

Vlas.

Synth.

Vo.

Synth.

El. Guit.

8

40

Fl.

Pno.

El. B.

D. Set

Vlas.

Synth.

Vo.

Synth.

El. Guit.

44

Fl.

Pno.

El. B.

D. Set

Vlas.

Synth.

Vo.

Synth.

El. Guit.

8

48

Fl.

Pno.

El. B.

D. Set

Vlas.

Synth.

Vo.

Synth.

El. Guit.

8

51

Fl.

Pno.

El. B.

D. Set

Vlas.

Synth.

Vo.

Synth.

El. Guit.

8



54

Fl.

Pno.

El. B.

D. Set

Vlas.

Synth.

Vo.

Synth.

El. Guit.

8

56

Fl.

Pno.

El. B.

D. Set

Vlas.

Synth.

Vo.

Synth.

El. Guit.

8

Detailed description: This musical score page contains measures 56, 57, and 58. The instruments are arranged in a standard orchestral layout. The Flute (Fl.) and two Synthesizer (Synth.) parts are in the upper staves, mostly containing whole rests. The Piano (Pno.) and Violoncello (Vlas.) parts play complex chords and arpeggios. The Electric Bass (El. B.) provides a steady bass line. The Drum Set (D. Set) features a mix of eighth and sixteenth notes. The Voice (Vo.) part is silent. The Electric Guitar (El. Guit.) plays a melodic line with a final sustained note in measure 58.

59

Fl.

Pno.

El. B.

D. Set

Vlas.

Synth.

Vo.

Synth.

El. Guit.

8

62

Fl.

Pno.

El. B.

D. Set

Vlas.

Synth.

Vo.

Synth.

El. Guit.

8

Detailed description: This page contains a musical score for measures 62 and 63. The score is written for nine instruments: Flute (Fl.), Piano (Pno.), Electric Bass (El. B.), Drums (D. Set), Violas (Vlas.), Synthesizer (Synth.), Voice (Vo.), another Synthesizer (Synth.), and Electric Guitar (El. Guit.). The key signature has one flat (B-flat). The Flute, Voice, and the second Synthesizer parts are mostly silent, indicated by whole rests. The Piano and Violas parts play a complex harmonic texture with chords and moving lines. The Electric Bass part provides a steady rhythmic foundation with eighth notes. The Drums part features a complex pattern with various note values and rests. The Electric Guitar part plays a simple melody of eighth notes. The page number 62 is at the top left, and a small '8' is at the bottom left of the Electric Guitar staff.

64

Fl.

Pno.

El. B.

D. Set

Vlas.

Synth.

Vo.

Synth.

El. Guit.

8

Detailed description: This musical score page contains measures 64 through 67. The instruments are arranged in a standard orchestral layout. The Flute (Fl.) part has rests in measures 64-66 and a quarter note G4 in measure 67. The Piano (Pno.) part features dense block chords in measures 64-66 and a descending eighth-note scale in measure 67. The Electric Bass (El. B.) part plays a steady eighth-note bass line. The Drum Set (D. Set) part includes a mix of eighth and sixteenth notes with some rests. The Violas (Vlas.) part plays block chords. The Synthesizer (Synth.) and Voice (Vo.) parts have whole rests. The second Synthesizer (Synth.) part also has whole rests. The Electric Guitar (El. Guit.) part has a quarter note G4 in measure 64, a half note G4 in measure 65, and a quarter note G4 in measure 66, with a whole rest in measure 67. A rehearsal mark '8' is located below the Electric Guitar staff.

68

Fl.

Pno.

El. B.

D. Set

Vlas.

Synth.

Vo.

Synth.

El. Guit.

8

71

Fl.

Pno.

El. B.

D. Set

Vlas.

Synth.

Vo.

Synth.

El. Guit.

8

75

Fl.

Pno.

El. B.

D. Set

Vlas.

Synth.

Vo.

Synth.

El. Guit.

8

Detailed description: This musical score page contains measures 75 through 78. The instruments are arranged in a standard orchestral layout. The Flute (Fl.) part begins in measure 75 with a half note G4, followed by quarter notes A4, B4, and C5, then a half note D5, and ends with a quarter rest. The Piano (Pno.) part features a complex texture with chords and moving lines. The Electric Bass (El. B.) part plays a steady eighth-note pattern. The Drum Set (D. Set) part includes a mix of quarter and eighth notes, with a snare drum hit marked with an 'x' in measure 77. The Violoncello (Vlas.) part plays a similar eighth-note pattern to the bass. The Synthesizer (Synth.) and Voice (Vo.) parts are silent throughout these measures. The second Synthesizer and Electric Guitar (El. Guit.) parts also remain silent. The page is numbered 24 at the top left and 75 at the top center. A small number 8 is located at the bottom left of the Electric Guitar staff.



79

Fl.

Pno.

El. B.

D. Set

Vlas.

Synth.

Vo.

Synth.

El. Guit.

8

82

Fl.

Pno.

El. B.

D. Set

Vlas.

Synth.

Vo.

Synth.

El. Guit.

86

Fl.

Pno.

El. B.

D. Set

Vlas.

Synth.

Vo.

Synth.

El. Guit.

8

Detailed description: This page of a musical score contains measures 86, 87, and 88. The instruments are Flute (Fl.), Piano (Pno.), Electric Bass (El. B.), Drums (D. Set), Violas (Vlas.), Synthesizer (Synth.), Voice (Vo.), another Synthesizer (Synth.), and Electric Guitar (El. Guit.). The key signature has one flat (B-flat). The Flute part has a melodic line starting in measure 87. The Piano part plays a series of chords in measure 86. The Electric Bass part has a simple line. The Drums part shows a complex pattern in measure 86. The Violas part plays chords. The Synthesizer parts are silent. The Voice part is silent. The Electric Guitar part is silent. The page number 86 is at the top left, and the page number 27 is at the top right. A small number 8 is at the bottom left.

89

Fl.

Pno.

El. B.

D. Set

Vlas.

Synth.

Vo.

Synth.

El. Guit.

8

92

Fl.

Pno.

El. B.

D. Set

Vlas.

Synth.

Vo.

Synth.

El. Guit.

8

Detailed description: This musical score page shows measures 92 and 93 for a multi-instrument ensemble. The instruments are Flute (Fl.), Piano (Pno.), Electric Bass (El. B.), Drums (D. Set), Violas (Vlas.), Synthesizer 1 (Synth.), Voice (Vo.), Synthesizer 2 (Synth.), and Electric Guitar (El. Guit.). The key signature has one flat (B-flat). The Flute part in measure 92 consists of a half note B-flat, followed by a quarter note A, a quarter note G, and a half note F. In measure 93, it continues with a half note E, a quarter note D, a quarter note C, and a half note B. The Piano, Electric Bass, Voice, Synthesizer 1, Synthesizer 2, and Electric Guitar parts are silent in both measures, indicated by whole rests. The Drums part features a complex rhythmic pattern in measure 92, including eighth and sixteenth notes with various articulations like accents and slurs. In measure 93, the drum pattern continues with similar rhythmic elements. The Viola part in measure 92 has a half note B-flat, a quarter note A, a quarter note G, and a half note F. In measure 93, it has a half note E, a quarter note D, a quarter note C, and a half note B. The Electric Bass part in measure 92 has a half note B-flat, a quarter note A, a quarter note G, and a half note F. In measure 93, it has a half note E, a quarter note D, a quarter note C, and a half note B. The Synthesizer 1 and Synthesizer 2 parts are silent in both measures, indicated by whole rests. The Voice part is also silent in both measures, indicated by whole rests. The Electric Guitar part is silent in both measures, indicated by whole rests. The page number 92 is at the top left, and the page number 29 is at the top right. The instrument labels are on the left, and the measure numbers 92 and 93 are at the top of the staves.

94

Fl.

Pno.

El. B.

D. Set

Vlas.

Synth.

Vo.

Synth.

El. Guit.

8

Detailed description: This musical score page contains measures 94 through 97. The instruments are arranged in a stack from top to bottom: Flute (Fl.), Piano (Pno.), Electric Bass (El. B.), Drums (D. Set), Violas (Vlas.), Synthesizer (Synth.), Voice (Vo.), another Synthesizer (Synth.), and Electric Guitar (El. Guit.). The key signature has one flat (B-flat). The Flute part in measure 94 starts with a quarter note B-flat, followed by eighth notes A-flat and G, then a quarter rest. In measure 95, it has a half note F, a half note E, and then eighth notes D, C, B, and A. In measure 96, it has eighth notes G, F, E, and D, followed by a quarter rest. In measure 97, it has eighth notes C, B, A, and G, followed by a quarter note F. The Piano, Voice, and both Synthesizer parts are silent throughout these measures, indicated by whole rests. The Electric Bass part in measure 94 has a quarter note B-flat, followed by quarter notes A-flat and G. In measure 95, it has a quarter rest, followed by eighth notes F and E, then a quarter note D. In measure 96, it has a quarter note C, followed by a quarter rest. In measure 97, it has a quarter note B, followed by eighth notes A and G, then a quarter note F. The Drums part shows a pattern of eighth notes with 'x' marks, likely representing cymbals, in measures 94 and 95. The Violas part in measure 94 has a half note B-flat, followed by a half note A-flat. In measure 95, it has a half note G, followed by a half note F. In measure 96, it has a half note E, followed by a half note D. In measure 97, it has a half note C, followed by a half note B. The Electric Guitar part is silent throughout these measures, indicated by whole rests. A small number '8' is written below the Electric Guitar staff in measure 94.

98

Fl.

Pno.

El. B.

D. Set

Vlas.

Synth.

Vo.

Synth.

El. Guit.

8

103

Fl.

Pno.

El. B.

D. Set

Vlas.

Synth.

Vo.

Synth.

El. Guit.



106

Fl.

Pno.

El. B.

D. Set

Vlas.

Synth.

Vo.

Synth.

El. Guit.

8

110

Fl.

Pno.

El. B.

D. Set

Vlas.

Synth.

Vo.

Synth.

El. Guit.

8

113

Fl.

Pno.

El. B.

D. Set

Vlas.

Synth.

Vo.

Synth.

El. Guit.

118

Fl.

Pno.

El. B.

D. Set

Vlas.

Synth.

Vo.

Synth.

El. Guit.

8

121

Fl.

Pno.

El. B.

D. Set

Vlas.

Synth.

Vo.

Synth.

El. Guit.

124

Fl.

Pno.

El. B.

D. Set

Vlas.

Synth.

Vo.

Synth.

El. Guit.

8

128

Fl.

Pno.

El. B.

D. Set

Vlas.

Synth.

Vo.

Synth.

El. Guit.

8

Detailed description: This page contains a musical score for measures 128 through 131. The score is written for eight instruments: Flute (Fl.), Piano (Pno.), Electric Bass (El. B.), Drums (D. Set), Violas (Vlas.), Synthesizer (Synth.), Voice (Vo.), and Electric Guitar (El. Guit.). The key signature is B-flat major (two flats). The time signature is 4/4. Measure 128 starts with a rehearsal mark. The Flute part has a melodic line with eighth and sixteenth notes. The Piano part plays chords. The Electric Bass part has a simple bass line. The Drums part includes a snare drum and a cymbal. The Violas part has a melodic line with eighth and sixteenth notes. The Synthesizer part is silent. The Voice part has a vocal line. The Electric Guitar part is silent. The score ends with a double bar line and a fermata over the final measure.

132

Fl.

Pno.

El. B.

D. Set

Vlas.

Synth.

Vo.

Synth.

El. Guit.

8



136

Fl.

Pno.

El. B.

D. Set

Vlas.

Synth.

Vo.

Synth.

El. Guit.

8

141

Fl.

Pno.

El. B.

D. Set

Vlas.

Synth.

Vo.

Synth.

El. Guit.

8

144

Fl.

Pno.

El. B.

D. Set

Vlas.

Synth.

Vo.

Synth.

El. Guit.

8

147

Fl.

Pno.

El. B.

D. Set

Vlas.

Synth.

Vo.

Synth.

El. Guit.

8

152

Fl.

Pno.

El. B.

D. Set

Vlas.

Synth.

Vo.

Synth.

El. Guit.

8

157

Fl.

Pno.

El. B.

D. Set

Vlas.

Synth.

Vo.

Synth.

El. Guit.

8

162

Fl.

Pno.

El. B.

D. Set

Vlas.

Synth.

Vo.

Synth.

El. Guit.