

♩ = 118

System 1, measures 1-4. The piece is in 4/4 time with a key signature of one flat (B-flat). The right hand features a melodic line with eighth and sixteenth notes, while the left hand provides a steady bass line of quarter notes.

5

System 2, measures 5-8. The right hand continues the melodic pattern, and the left hand maintains the quarter-note bass line.

9

System 3, measures 9-10. The right hand has a more active melodic line with eighth notes, and the left hand continues with the quarter-note bass line.

11

System 4, measures 11-13. The right hand features a melodic line with some rests, and the left hand continues with the quarter-note bass line.

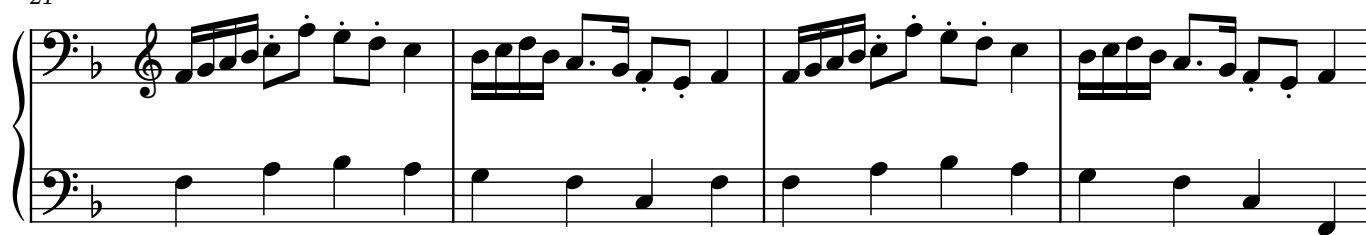
14

System 5, measures 14-16. The right hand has a melodic line with some rests, and the left hand continues with the quarter-note bass line.

17

System 6, measures 17-20. The right hand features a melodic line with eighth and sixteenth notes, and the left hand continues with the quarter-note bass line.

21



25



29



32



36



40

