

♩ = 140

2

3

5

7

9

11

Measures 11 and 12 of a musical score in B-flat major (two flats). Measure 11 features a bass line with a descending eighth-note pattern (Bb, Ab, Gb, Fb) and a treble line with a descending eighth-note pattern (Bb, Ab, Gb, Fb). Measure 12 continues the bass line pattern and introduces a treble line with a descending eighth-note pattern (Bb, Ab, Gb, Fb).

13

Measures 13 and 14 of a musical score in B-flat major (two flats). Measure 13 features a treble line with a descending eighth-note pattern (Bb, Ab, Gb, Fb) and a bass line with a descending eighth-note pattern (Bb, Ab, Gb, Fb). Measure 14 continues the treble line pattern and introduces a bass line with a descending eighth-note pattern (Bb, Ab, Gb, Fb).

15

Measures 15 and 16 of a musical score in B-flat major (two flats). Measure 15 features a bass line with a descending eighth-note pattern (Bb, Ab, Gb, Fb) and a treble line with a descending eighth-note pattern (Bb, Ab, Gb, Fb). Measure 16 continues the bass line pattern and introduces a treble line with a descending eighth-note pattern (Bb, Ab, Gb, Fb).

19

Measures 19 through 28 of a musical score in B-flat major (two flats). The score consists of 10 measures of whole rests in both the treble and bass staves.

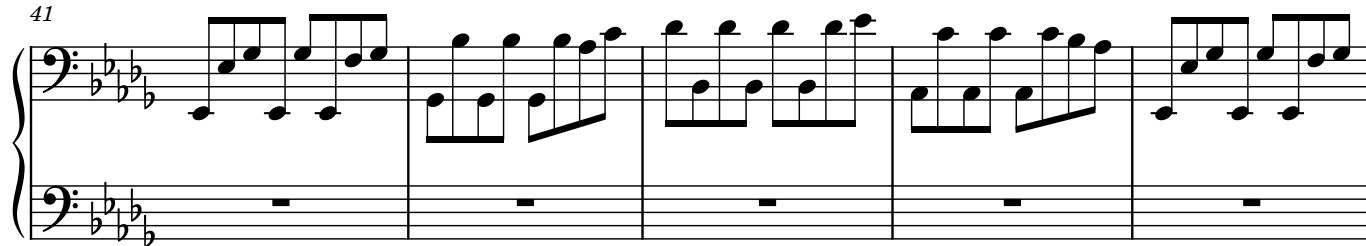
33

Measures 33 through 36 of a musical score in B-flat major (two flats). Measure 33 features a treble line with a descending eighth-note pattern (Bb, Ab, Gb, Fb) and a bass line with a descending eighth-note pattern (Bb, Ab, Gb, Fb). Measure 34 continues the treble line pattern and introduces a bass line with a descending eighth-note pattern (Bb, Ab, Gb, Fb). Measure 35 continues the treble line pattern and introduces a bass line with a descending eighth-note pattern (Bb, Ab, Gb, Fb). Measure 36 continues the treble line pattern and introduces a bass line with a descending eighth-note pattern (Bb, Ab, Gb, Fb).

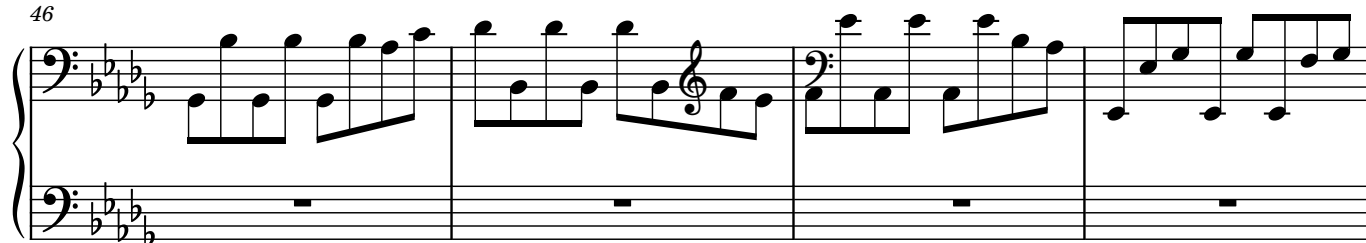
37

Measures 37 through 40 of a musical score in B-flat major (two flats). Measure 37 features a treble line with a descending eighth-note pattern (Bb, Ab, Gb, Fb) and a bass line with a descending eighth-note pattern (Bb, Ab, Gb, Fb). Measure 38 continues the treble line pattern and introduces a bass line with a descending eighth-note pattern (Bb, Ab, Gb, Fb). Measure 39 continues the treble line pattern and introduces a bass line with a descending eighth-note pattern (Bb, Ab, Gb, Fb). Measure 40 continues the treble line pattern and introduces a bass line with a descending eighth-note pattern (Bb, Ab, Gb, Fb).

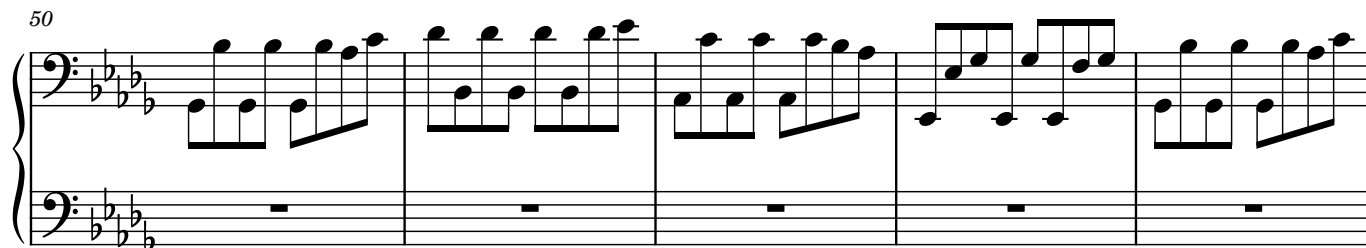
41



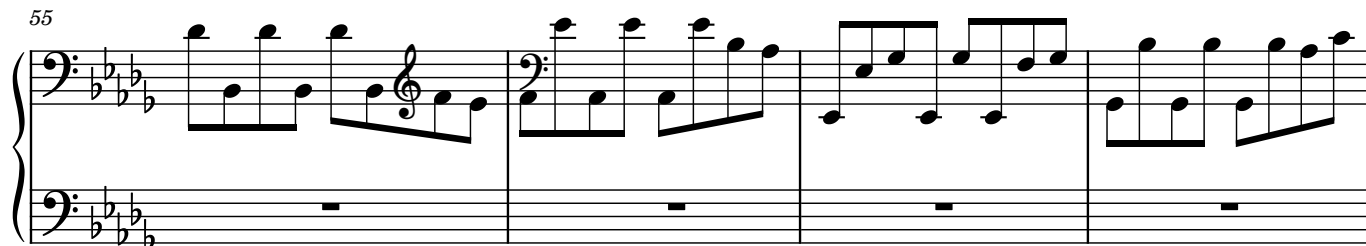
46



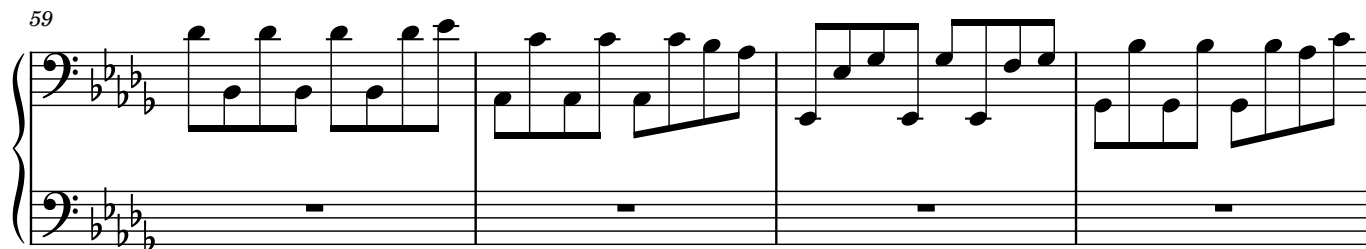
50



55



59



63

