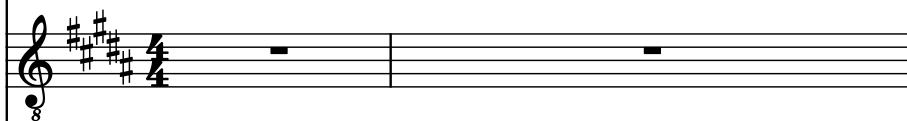


♩ = 106

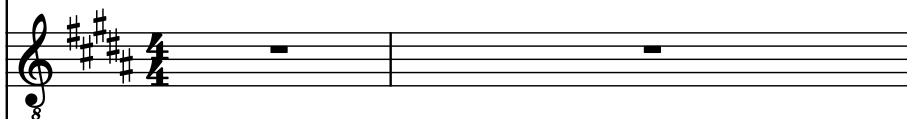
Electric Guitar, Lead Guitar



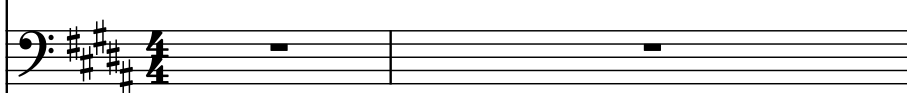
Electric Guitar, Rythem



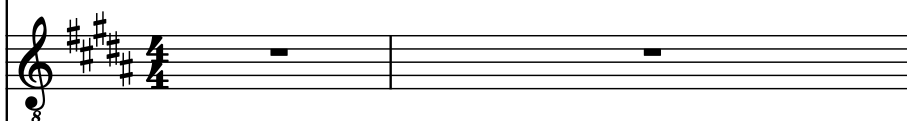
Electric Guitar, Rythem 2



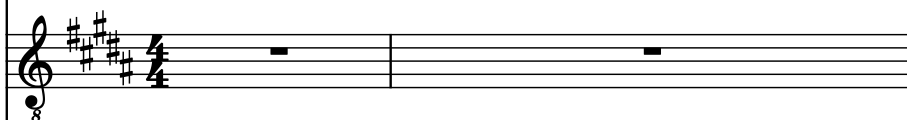
Electric Bass, Bass



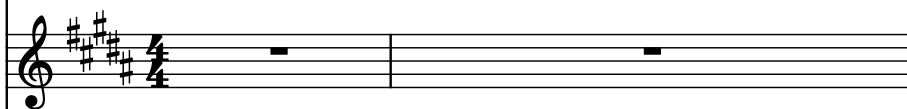
Electric Guitar, Clean Guitar



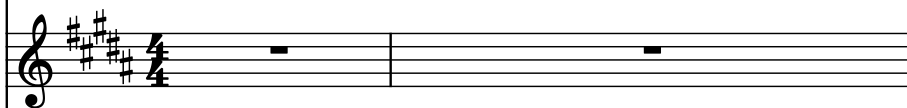
Acoustic Guitar, Muted



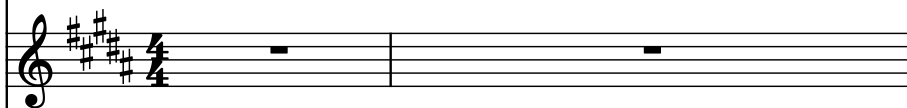
Rotary Organ, Vocals



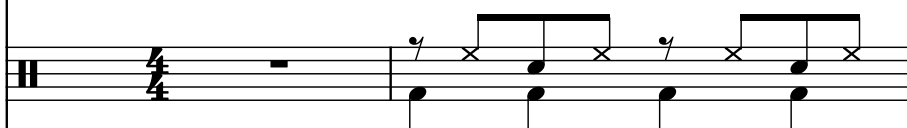
Rotary Organ, Vocals Verse/Chorus



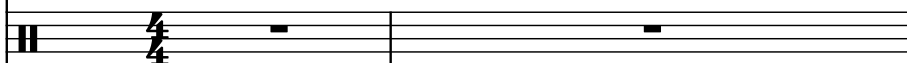
Rotary Organ, Backup Vocals



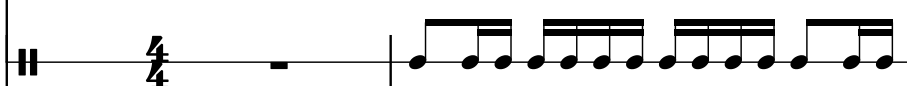
Drumset, Beginning Drums



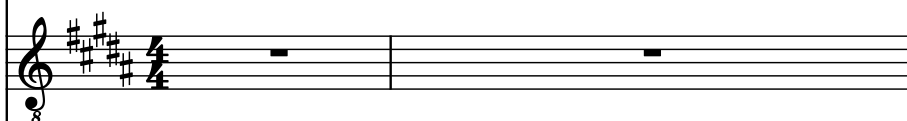
Drumset, Drums



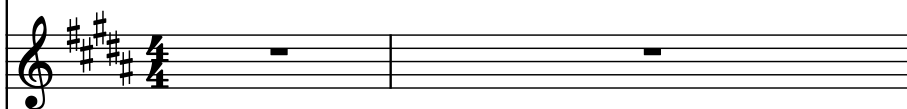
Metal Wind Chimes, Shaker



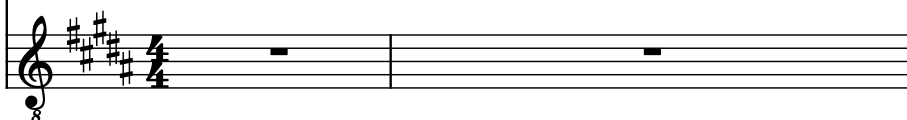
Electric Guitar, Rythem 2



Percussive Organ, Organ Thingie



Electric Guitar, Solo Guitar



3

El. Guit.

El. Guit.

El. Guit.

El. B.

El. Guit.

Guit.

Rot. Org.

Rot. Org.

Rot. Org.

D. Set

D. Set

Met. Wn Ch.

El. Guit.

Perc. Org.

El. Guit.

5

El. Guit.

El. Guit.

El. Guit.

El. B.

El. Guit.

Guit.

Rot. Org.

Rot. Org.

Rot. Org.

D. Set

D. Set

Met. Wn Ch.

El. Guit.

Perc. Org.

El. Guit.

7

El. Guit.

El. Guit.

El. Guit.

El. B.

El. Guit.

Guit.

Rot. Org.

Rot. Org.

Rot. Org.

D. Set

D. Set

Met. Wn Ch.

El. Guit.

Perc. Org.

El. Guit.

8

9

El. Guit.

El. Guit.

El. Guit.

El. B.

El. Guit.

Guit.

Rot. Org.

Rot. Org.

Rot. Org.

D. Set

D. Set

Met. Wn Ch.

El. Guit.

Perc. Org.

El. Guit.

8

11

El. Guit.

El. Guit.

El. Guit.

El. B.

El. Guit.

Guit.

Rot. Org.

Rot. Org.

Rot. Org.

D. Set

D. Set

Met. Wn Ch.

El. Guit.

Perc. Org.

El. Guit.

13

El. Guit.

El. Guit.

El. Guit.

El. B.

El. Guit.

Guit.

Rot. Org.

Rot. Org.

Rot. Org.

D. Set

D. Set

Met. Wn Ch.

El. Guit.

Perc. Org.

El. Guit.

15

El. Guit.

El. Guit.

El. Guit.

El. B.

El. Guit.

Guit.

Rot. Org.

Rot. Org.

Rot. Org.

D. Set

D. Set

Met. Wn Ch.

El. Guit.

Perc. Org.

El. Guit.



18

El. Guit.

El. Guit.

El. Guit.

El. B.

El. Guit.

Guit.

Rot. Org.

Rot. Org.

Rot. Org.

D. Set

D. Set

Met. Wn Ch.

El. Guit.

Perc. Org.

El. Guit.

21

El. Guit.

El. Guit.

El. Guit.

El. B.

El. Guit.

Guit.

Rot. Org.

Rot. Org.

Rot. Org.

D. Set

D. Set

Met. Wn Ch.

El. Guit.

Perc. Org.

El. Guit.

Pdf downloaded from [www.midicities.com](http://www.midicities.com)

25

El. Guit. 8 **ch**

El. Guit. 8

El. Guit. 8

El. B.

El. Guit. 8

Guit. 8

Rot. Org.

Rot. Org.

Rot. Org.

D. Set

D. Set

Met. Wn Ch.

El. Guit. 8

Perc. Org.

El. Guit. 8

27

El. Guit.

El. Guit.

El. Guit.

El. B.

El. Guit.

Guit.

Rot. Org.

Rot. Org.

Rot. Org.

D. Set

D. Set

Met. Wn Ch.

El. Guit.

Perc. Org.

El. Guit.

29

El. Guit.

El. Guit.

El. Guit.

El. B.

El. Guit.

Guit.

Rot. Org.

Rot. Org.

Rot. Org.

D. Set

D. Set

Met. Wn Ch.

El. Guit.

Perc. Org.

El. Guit.

31

El. Guit.

El. Guit.

El. Guit.

El. B.

El. Guit.

Guit.

Rot. Org.

Rot. Org.

Rot. Org.

D. Set

D. Set

Met. Wn Ch.

El. Guit.

Perc. Org.

El. Guit.

34

El. Guit.

El. Guit.

El. Guit.

El. B.

El. Guit.

Guit.

Rot. Org.

Rot. Org.

Rot. Org.

D. Set

D. Set

Met. Wn Ch.

El. Guit.

Perc. Org.

El. Guit.



37

El. Guit.

El. Guit.

El. Guit.

El. B.

El. Guit.

Guit.

Rot. Org.

Rot. Org.

Rot. Org.

D. Set

D. Set

Met. Wn Ch.

El. Guit.

Perc. Org.

El. Guit.

39

El. Guit. 8

El. Guit. 8

El. Guit. 8

El. B.

El. Guit. 8

Guit. 8

Rot. Org.

Rot. Org.

Rot. Org.

D. Set

D. Set

Met. Wn Ch.

El. Guit. 8

Perc. Org.

El. Guit. 8

41

41

El. Guit. 8

El. Guit. 8

El. Guit. 8

El. B.

El. Guit. 8

Guit. 8

Rot. Org.

Rot. Org.

Rot. Org.

D. Set

D. Set

Met. Wn Ch.

El. Guit. 8

Perc. Org.

El. Guit. 8

The musical score for page 41 consists of 14 staves. The first three staves are for Electric Guitars (El. Guit.), each with a capo on the 8th fret. The fourth staff is for Electric Bass (El. B.). The fifth staff is for another Electric Guitar (El. Guit.) with a capo on the 8th fret. The sixth staff is for a standard Guitar (Guit.) with a capo on the 8th fret. The seventh staff is for a Rotarion Organ (Rot. Org.). The eighth and ninth staves are also for Rotarion Organ. The tenth and eleventh staves are for a Double Set (D. Set). The twelfth staff is for Metal Wrench and Chain (Met. Wn Ch.). The thirteenth staff is for an Electric Guitar (El. Guit.) with a capo on the 8th fret. The fourteenth staff is for a Percussion Organ (Perc. Org.). The score is written in a key with four sharps (F#, C#, G#, D#) and a common time signature. The first three staves for Electric Guitars and the Electric Bass staff contain whole rests. The fifth staff for Electric Guitar contains whole notes. The sixth staff for Guitar contains eighth notes and rests. The seventh staff for Rotarion Organ contains eighth notes and rests. The eighth and ninth staves for Rotarion Organ contain whole rests. The tenth and eleventh staves for Double Set contain whole rests. The twelfth staff for Metal Wrench and Chain contains whole rests. The thirteenth staff for Electric Guitar contains whole rests. The fourteenth staff for Percussion Organ contains eighth notes and rests.

44

El. Guit.

El. Guit.

El. Guit.

El. B.

El. Guit.

Guit.

Rot. Org.

Rot. Org.

Rot. Org.

D. Set

D. Set

Met. Wn Ch.

El. Guit.

Perc. Org.

El. Guit.

47

El. Guit.

El. Guit.

El. Guit.

El. B.

El. Guit.

Guit.

Rot. Org.

Rot. Org.

Rot. Org.

D. Set

D. Set

Met. Wn Ch.

El. Guit.

Perc. Org.

El. Guit.

49

El. Guit.

El. Guit.

El. Guit.

El. B.

El. Guit.

Guit.

Rot. Org.

Rot. Org.

Rot. Org.

D. Set

D. Set

Met. Wn Ch.

El. Guit.

Perc. Org.

El. Guit.

8

8

8

8

8

8

8

8

8

8

8

8

8

8

8

51

El. Guit. 8

El. Guit. 8

El. Guit. 8

El. B.

El. Guit. 8

Guit. 8

Rot. Org.

Rot. Org.

Rot. Org.

D. Set

D. Set

Met. Wn Ch.

El. Guit. 8

Perc. Org.

El. Guit. 8

53

El. Guit.

El. Guit.

El. Guit.

El. B.

El. Guit.

Guit.

Rot. Org.

Rot. Org.

Rot. Org.

D. Set

D. Set

Met. Wn Ch.

El. Guit.

Perc. Org.

El. Guit.



55

El. Guit.

El. Guit.

El. Guit.

El. B.

El. Guit.

Guit.

Rot. Org.

Rot. Org.

Rot. Org.

D. Set

D. Set

Met. Wn Ch.

El. Guit.

Perc. Org.

El. Guit.

57

El. Guit. 8

El. Guit. 8

El. Guit. 8

El. B.

El. Guit. 8

Guit. 8

Rot. Org.

Rot. Org.

Rot. Org.

D. Set

D. Set

Met. Wn Ch.

El. Guit. 8

Perc. Org.

El. Guit. 8

8

60

El. Guit.

El. Guit.

El. Guit.

El. B.

El. Guit.

Guit.

Rot. Org.

Rot. Org.

Rot. Org.

D. Set

D. Set

Met. Wn Ch.

El. Guit.

Perc. Org.

El. Guit.

63

El. Guit.

El. Guit.

El. Guit.

El. B.

El. Guit.

Guit.

Rot. Org.

Rot. Org.

Rot. Org.

D. Set

D. Set

Met. Wn Ch.

El. Guit.

Perc. Org.

El. Guit.

65

This musical score page contains measures 65 and 66. The key signature has four sharps (F#, C#, G#, D#). Measure 65 features a complex guitar arrangement with eighth-note patterns and triplets, while the bass line plays a steady eighth-note sequence. Measure 66 continues the guitar patterns and adds a drum set part with a syncopated rhythm. Other instruments like the electric bass, acoustic guitar, and three rotary organs are present but have rests in both measures. The percussion section includes a metal wench chime and a percussion organ, also with rests.

El. Guit.

El. Guit.

El. Guit.

El. B.

El. Guit.

Guit.

Rot. Org.

Rot. Org.

Rot. Org.

D. Set

D. Set

Met. Wn Ch.

El. Guit.

Perc. Org.

El. Guit.

67

El. Guit.

El. Guit.

El. Guit.

El. B.

El. Guit.

Guit.

Rot. Org.

Rot. Org.

Rot. Org.

D. Set

D. Set

Met. Wn Ch.

El. Guit.

Perc. Org.

El. Guit.

69

El. Guit.

El. Guit.

El. Guit.

El. B.

El. Guit.

Guit.

Rot. Org.

Rot. Org.

Rot. Org.

D. Set

D. Set

Met. Wn Ch.

El. Guit.

Perc. Org.

El. Guit.

7

71

El. Guit.

El. Guit.

El. Guit.

El. B.

El. Guit.

Guit.

Rot. Org.

Rot. Org.

Rot. Org.

D. Set

D. Set

Met. Wn Ch.

El. Guit.

Perc. Org.

El. Guit.



74

El. Guit.

El. Guit.

El. Guit.

El. B.

El. Guit.

Guit.

Rot. Org.

Rot. Org.

Rot. Org.

D. Set

D. Set

Met. Wn Ch.

El. Guit.

Perc. Org.

El. Guit.

Pdf downloaded from [www.midicities.com](http://www.midicities.com)

79

El. Guit.

El. Guit.

El. Guit.

El. B.

El. Guit.

Guit.

Rot. Org.

Rot. Org.

Rot. Org.

D. Set

D. Set

Met. Wn Ch.

El. Guit.

Perc. Org.

El. Guit.

81

El. Guit.

El. Guit.

El. Guit.

El. B.

El. Guit.

Guit.

Rot. Org.

Rot. Org.

Rot. Org.

D. Set

D. Set

Met. Wn Ch.

El. Guit.

Perc. Org.

El. Guit.

83

83

El. Guit.

El. Guit.

El. Guit.

El. B.

El. Guit.

Guit.

Rot. Org.

Rot. Org.

Rot. Org.

D. Set

D. Set

Met. Wn Ch.

El. Guit.

Perc. Org.

El. Guit.

8

85

El. Guit.

El. Guit.

El. Guit.

El. B.

El. Guit.

Guit.

Rot. Org.

Rot. Org.

Rot. Org.

D. Set

D. Set

Met. Wn Ch.

El. Guit.

Perc. Org.

El. Guit.

87

El. Guit.

El. Guit.

El. Guit.

El. B.

El. Guit.

Guit.

Rot. Org.

Rot. Org.

Rot. Org.

D. Set

D. Set

Met. Wn Ch.

El. Guit.

Perc. Org.

El. Guit.

88

89

El. Guit.

El. Guit.

El. Guit.

El. B.

El. Guit.

Guit.

Rot. Org.

Rot. Org.

Rot. Org.

D. Set

D. Set

Met. Wn Ch.

El. Guit.

Perc. Org.

El. Guit.



91

El. Guit.

El. Guit.

El. Guit.

El. B.

El. Guit.

Guit.

Rot. Org.

Rot. Org.

Rot. Org.

D. Set

D. Set

Met. Wn Ch.

El. Guit.

Perc. Org.

El. Guit.

94

This musical score page contains measures 94, 95, and 96. The key signature has four sharps (F#, C#, G#, D#) and the time signature is 8/8. The instruments and their parts are as follows:

- El. Guit. (1):** Measure 94 has a whole note chord (F#, C#, G#, D#) with an 8-measure rest indicated below. Measures 95 and 96 have whole rests.
- El. Guit. (2):** Measures 94, 95, and 96 have whole rests.
- El. Guit. (3):** Measure 94 has a quarter note F# followed by an 8-measure rest. Measures 95 and 96 have whole rests.
- El. B.:** Measure 94 has a half note F# followed by an 8-measure rest. Measures 95 and 96 have whole rests.
- El. Guit. (4):** Measures 94, 95, and 96 have whole rests.
- Guit.:** Measures 94, 95, and 96 have whole rests.
- Rot. Org. (1):** Measures 94, 95, and 96 have whole rests.
- Rot. Org. (2):** Measure 94 has a half note F#. Measure 95 has a half note F#. Measure 96 has a quarter note F#, followed by an 8-measure rest.
- Rot. Org. (3):** Measure 94 has a half note F# followed by an 8-measure rest. Measures 95 and 96 have whole rests.
- D. Set (1):** Measures 94, 95, and 96 have whole rests.
- D. Set (2):** Measure 94 has a quarter note F# with an 8-measure rest. Measure 95 has a quarter note F# with an 8-measure rest. Measure 96 has a quarter note F# with an 8-measure rest.
- Met. Wn Ch.:** Measures 94, 95, and 96 have whole rests.
- El. Guit. (5):** Measure 94 has a quarter note F# followed by an 8-measure rest. Measures 95 and 96 have whole rests.
- Perc. Org.:** Measures 94, 95, and 96 have whole rests.
- El. Guit. (6):** Measures 94, 95, and 96 have whole rests.

8