

♩ = 135

Drumset, Drum Set



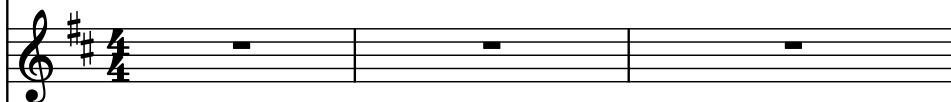
Bass Synthesizer, Bass Guitar



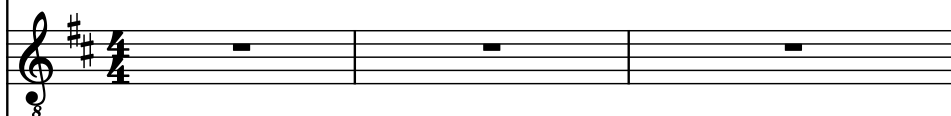
Saw Synthesizer



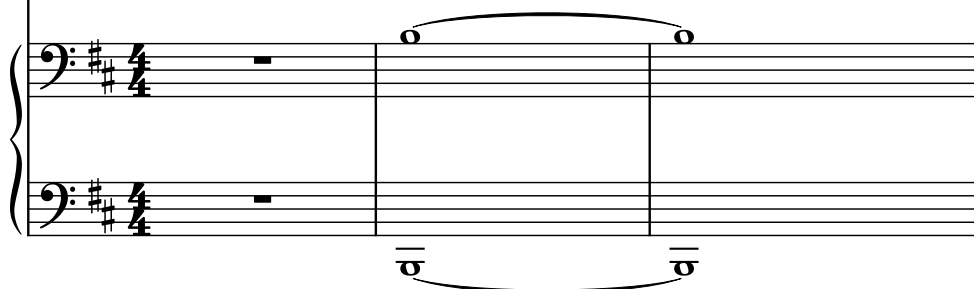
Effect Synthesizer, Flute



Acoustic Guitar, Guitar



Pad Synthesizer



D. Set

Synth.

Synth.

Synth.

Guit.

Synth.

The score is for a piece titled "D. Set". It features six staves. The first staff is for a Drum Set (D. Set) in 4/4 time, marked with a double bar line and a repeat sign. The second staff is for a Synthesizer (Synth.) in bass clef, with a key signature of two sharps (F# and C#). The third staff is for another Synthesizer (Synth.) in treble clef, also with a key signature of two sharps. The fourth staff is for a Synthesizer (Synth.) in treble clef, with a key signature of two sharps. The fifth staff is for a Guitar (Guit.) in treble clef, with a key signature of two sharps and a capo on the 8th fret. The sixth staff is for a Synthesizer (Synth.) in bass clef, with a key signature of two sharps. The score consists of four measures. The Drum Set part has a steady quarter-note rhythm. The first Synth. part has a melodic line with eighth notes. The second Synth. part has a melodic line with eighth notes and some rests. The third Synth. part has a sustained note. The fourth Synth. part has a sustained note. The Guitar part has a sustained note. The fifth Synth. part has a melodic line with eighth notes and some rests. The sixth Synth. part has a melodic line with eighth notes and some rests.

8 3

D. Set

Synth.

Synth.

Synth.

Guit.

Synth.

11

D. Set

Synth.

Synth.

Synth.

Guit.

Synth.

8

11

12

13

D. Set

Synth.

Synth.

Synth.

Guit.

Synth.

5

15

D. Set

Synth.

Synth.

Synth.

Guit.

Synth.

8

17

D. Set

Synth.

Synth.

Synth.

Guit.

Synth.

|||

9