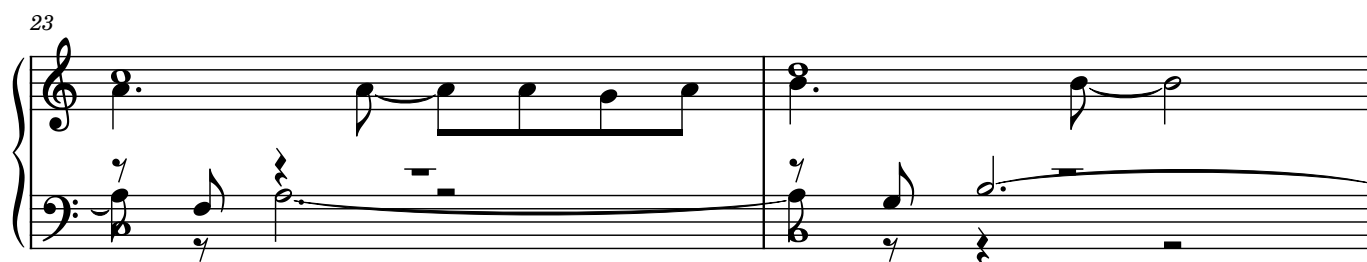
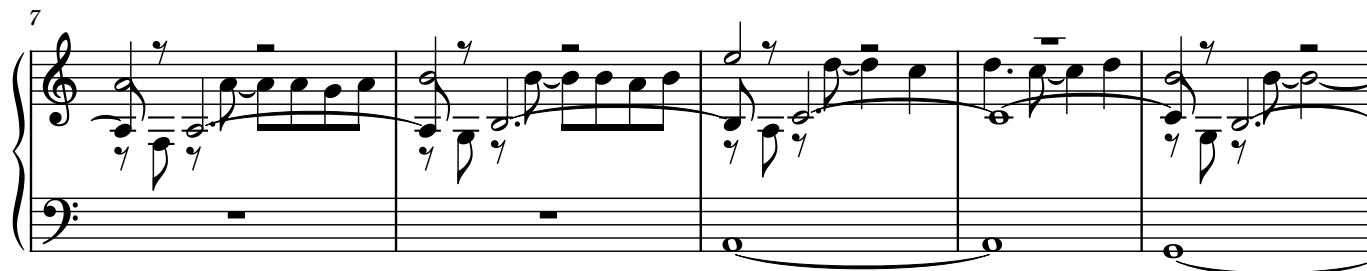


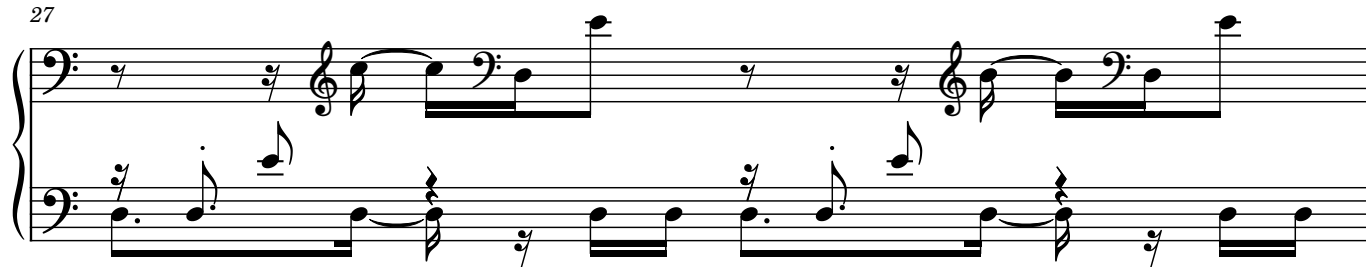
♩ = 140



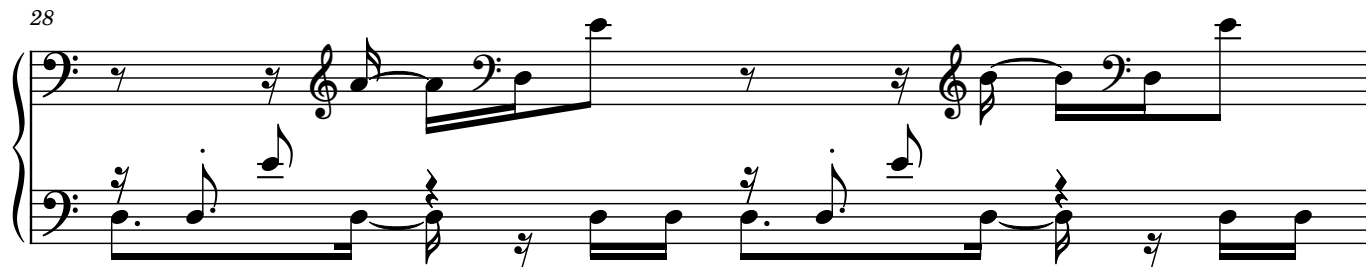
26



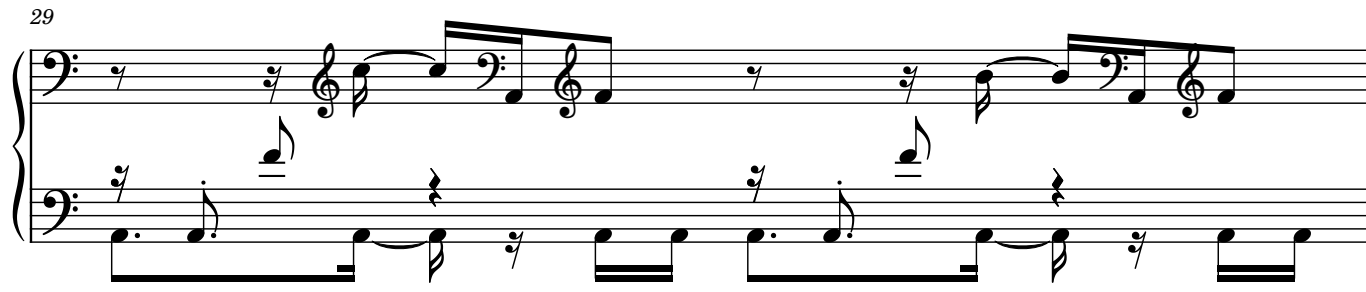
27



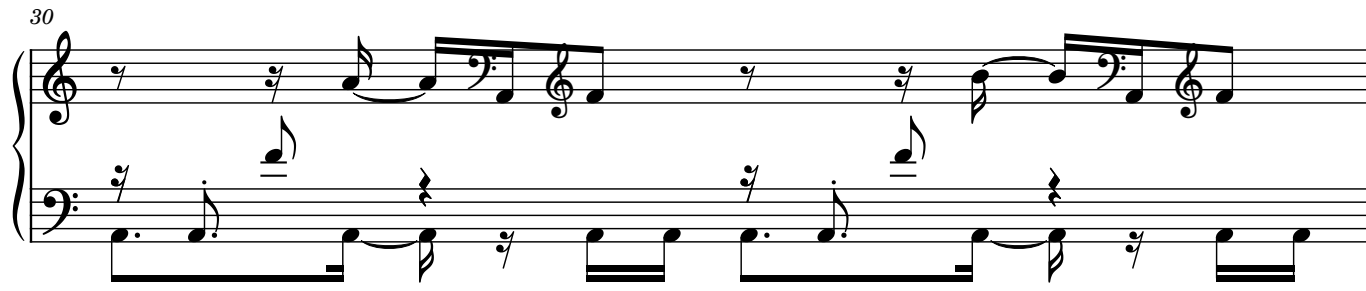
28



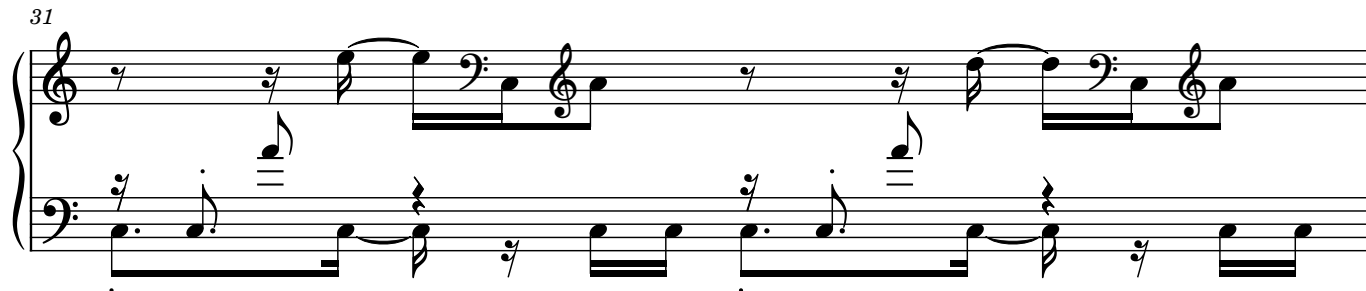
29



30



31



32

Measures 32-33: Treble clef. Measure 32: quarter rest, eighth rest, eighth note G4, quarter note A4, quarter note B4. Measure 33: quarter rest, eighth rest, eighth note G4, quarter note A4, quarter note B4. Bass clef: Measure 32: quarter note G2, eighth note A2, eighth note B2, quarter note C3. Measure 33: quarter note G2, eighth note A2, eighth note B2, quarter note C3.

33

Measures 34-35: Treble clef. Measure 34: quarter rest, eighth rest, eighth note G4, quarter note A4, quarter note B4. Measure 35: quarter rest, eighth rest, eighth note G4, quarter note A4, quarter note B4. Bass clef: Measure 34: quarter note G2, eighth note A2, eighth note B2, quarter note C3. Measure 35: quarter note G2, eighth note A2, eighth note B2, quarter note C3.

34

Measures 36-37: Treble clef. Measure 36: quarter rest, eighth rest, eighth note G4, quarter note A4, quarter note B4. Measure 37: quarter rest, eighth rest, eighth note G4, quarter note A4, quarter note B4. Bass clef: Measure 36: quarter note G2, eighth note A2, eighth note B2, quarter note C3. Measure 37: quarter note G2, eighth note A2, eighth note B2, quarter note C3.

35

Measures 38-39: Treble clef. Measure 38: quarter rest, eighth rest, eighth note G4, quarter note A4, quarter note B4. Measure 39: quarter rest, eighth rest, eighth note G4, quarter note A4, quarter note B4. Bass clef: Measure 38: quarter note G2, eighth note A2, eighth note B2, quarter note C3. Measure 39: quarter note G2, eighth note A2, eighth note B2, quarter note C3.

36

Measures 40-41: Treble clef. Measure 40: quarter rest, eighth rest, eighth note G4, quarter note A4, quarter note B4. Measure 41: quarter rest, eighth rest, eighth note G4, quarter note A4, quarter note B4. Bass clef: Measure 40: quarter note G2, eighth note A2, eighth note B2, quarter note C3. Measure 41: quarter note G2, eighth note A2, eighth note B2, quarter note C3.

37

Measures 42-43: Treble clef. Measure 42: quarter rest, eighth rest, eighth note G4, quarter note A4, quarter note B4. Measure 43: quarter rest, eighth rest, eighth note G4, quarter note A4, quarter note B4. Bass clef: Measure 42: quarter note G2, eighth note A2, eighth note B2, quarter note C3. Measure 43: quarter note G2, eighth note A2, eighth note B2, quarter note C3.

38

Handwritten musical notation for measures 38 and 39. The system consists of two staves. The upper staff is in treble clef and the lower staff is in bass clef. Measure 38 features a melody in the treble staff with eighth and sixteenth notes, and a bass line in the bass staff with eighth notes and rests. Measure 39 continues the melodic and harmonic patterns.

39

Handwritten musical notation for measures 39 and 40. The system consists of two staves. The upper staff is in treble clef and the lower staff is in bass clef. Measure 39 continues the melodic and harmonic patterns. Measure 40 features a melody in the treble staff with eighth and sixteenth notes, and a bass line in the bass staff with eighth notes and rests.

40

Handwritten musical notation for measures 40 and 41. The system consists of two staves. The upper staff is in treble clef and the lower staff is in bass clef. Measure 40 features a melody in the treble staff with eighth and sixteenth notes, and a bass line in the bass staff with eighth notes and rests. Measure 41 continues the melodic and harmonic patterns.