

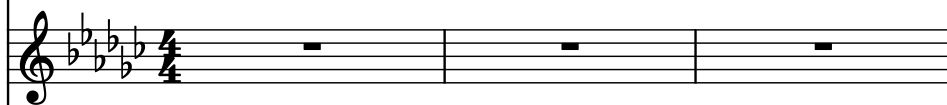
♩ = 181

Electric Guitar, Guitar 1-Head

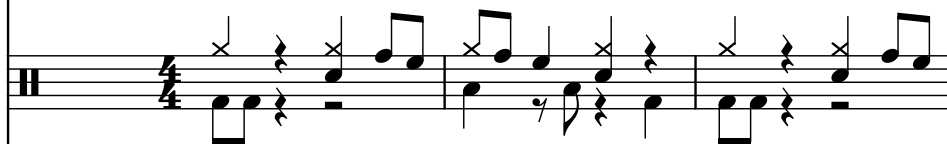


Shoots and Ladders

Voice, Vocals-Jonathan



Drumset, Drums-David



Electric Guitar, Guitar 2-Munky



5-str. Electric Bass, Bass-Fieldy

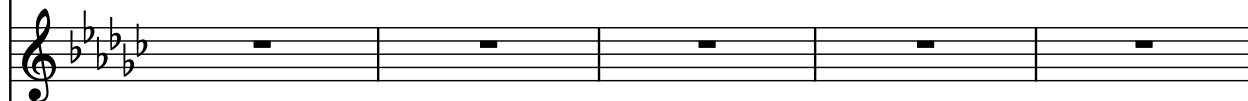


4

El. Guit.



Vo.



D. Set



El. Guit.



El. B.



9

El. Guit.

Vo.

D. Set

El. Guit.

El. B.

14

El. Guit.

Vo.

D. Set

El. Guit.

El. B.

19

El. Guit.

Vo.

D. Set

El. Guit.

El. B.

24

El. Guit.

Vo.

D. Set

El. Guit.

El. B.

29

El. Guit.

Vo.

D. Set

El. Guit.

El. B.

34

El. Guit.

Vo.

D. Set

El. Guit.

El. B.

39

El. Guit.

Vo.

D. Set

El. Guit.

El. B.

8

43

El. Guit.

Vo.

D. Set

El. Guit.

El. B.

8

48

El. Guit.

Vo.

D. Set

El. Guit.

El. B.

51

El. Guit.

Vo.

D. Set

El. Guit.

El. B.

55

El. Guit.

Vo.

D. Set

El. Guit.

El. B.

8

59

El. Guit.

Vo.

D. Set

El. Guit.

El. B.

8

63

El. Guit.

Vo.

D. Set

El. Guit.

El. B.

This system of musical notation covers measures 63 to 66. It features five staves: two for Electric Guitar (El. Guit.), one for Voice (Vo.), one for Drums (D. Set), and one for Electric Bass (El. B.). The key signature is B-flat major (two flats). The guitar parts play a melodic line with eighth and quarter notes, often tied across measures. The voice part has a vocal line with lyrics. The drums play a steady eighth-note pattern. The bass line provides a harmonic foundation with a mix of eighth and quarter notes.

67

El. Guit.

Vo.

D. Set

El. Guit.

El. B.

This system of musical notation covers measures 67 to 70. It continues the five-staff arrangement from the previous system. The guitar parts continue their melodic development. The voice part has lyrics. The drums maintain their rhythmic pattern. The bass line continues its harmonic support.



72

El. Guit.

Vo.

D. Set

El. Guit.

El. B.

77

El. Guit.

Vo.

D. Set

El. Guit.

El. B.

81

El. Guit.

Vo.

D. Set

El. Guit.

El. B.

81 82 83 84

85

El. Guit.

Vo.

D. Set

El. Guit.

El. B.

85 86 87 88

89

El. Guit.

Vo.

D. Set

El. Guit.

El. B.

93

$\text{♩} = 211$

El. Guit.

Vo.

D. Set

El. Guit.

El. B.

98

El. Guit.

Vo.

D. Set

El. Guit.

El. B.

101

El. Guit.

Vo.

D. Set

El. Guit.

El. B.

104

El. Guit.

Vo.

D. Set

El. Guit.

El. B.

107

El. Guit.

Vo.

D. Set

El. Guit.

El. B.

110

El. Guit.

Vo.

D. Set

El. Guit.

El. B.

113

El. Guit.

Vo.

D. Set

El. Guit.

El. B.

117

El. Guit.

Vo.

D. Set

El. Guit.

El. B.

120

El. Guit.

Vo.

D. Set

El. Guit.

El. B.

124

El. Guit.

Vo.

D. Set

El. Guit.

El. B.

8

127

El. Guit.

Vo.

D. Set

El. Guit.

El. B.

8



131

El. Guit.

Vo.

D. Set

El. Guit.

El. B.

134

El. Guit.

Vo.

D. Set

El. Guit.

El. B.

138  $\text{♩} = 181$

El. Guit.

Vo.

D. Set

El. Guit.

El. B.

143

El. Guit.

Vo.

D. Set

El. Guit.

El. B.

148

El. Guit.

Vo.

D. Set

El. Guit.

El. B.

8

153

El. Guit.

Vo.

D. Set

El. Guit.

El. B.

8

156

El. Guit.

Vo.

D. Set

El. Guit.

El. B.

8

160

El. Guit.

Vo.

D. Set

El. Guit.

El. B.

8

164

El. Guit.

Vo.

D. Set

El. Guit.

El. B.

168

El. Guit.

Vo.

D. Set

El. Guit.

El. B.

172

El. Guit.

Vo.

D. Set

El. Guit.

El. B.

176

El. Guit.

Vo.

D. Set

El. Guit.

El. B.