

$\text{♩} = 120$

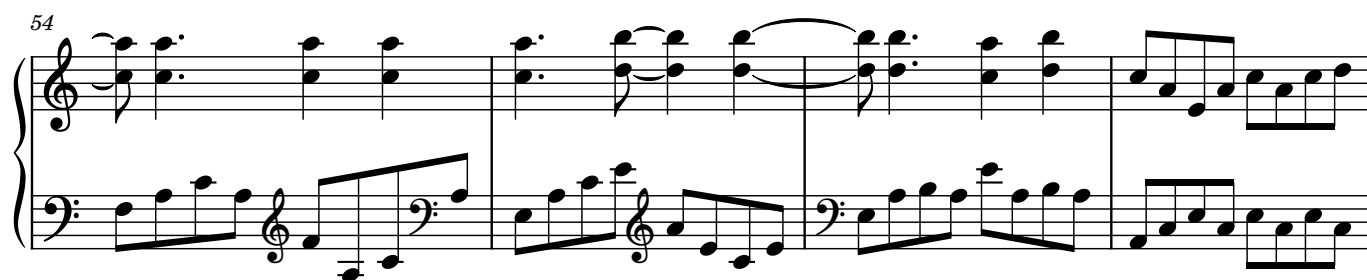
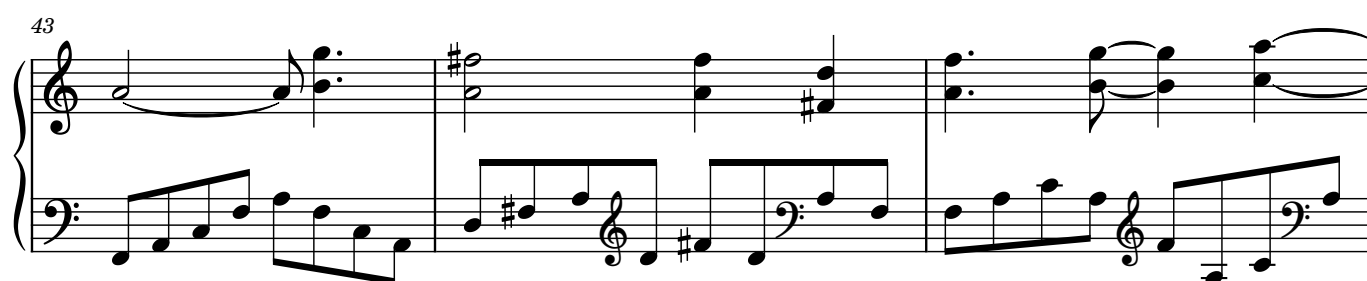
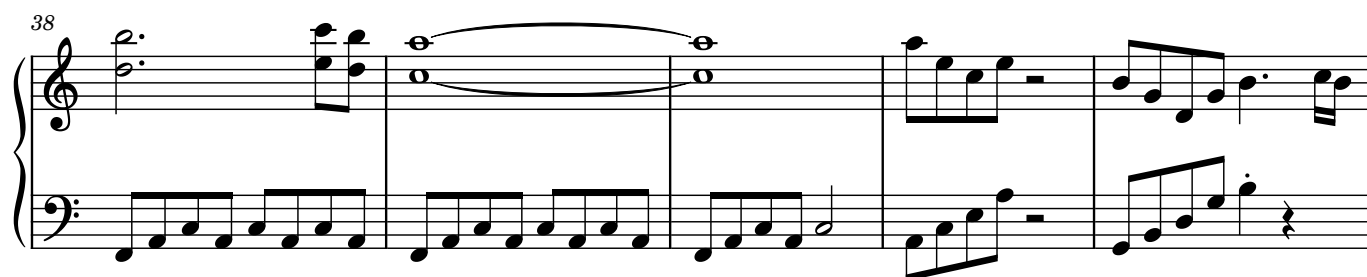
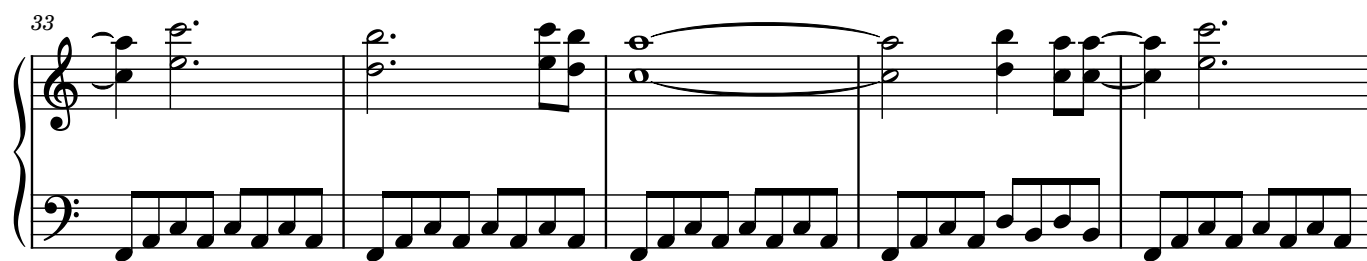
6

12

18

23

28



58

Measures 58-62: Treble and bass staves. Treble staff contains eighth and sixteenth notes, mostly ascending and then descending. Bass staff contains eighth and sixteenth notes, mostly ascending and then descending.

63

Measures 63-67: Treble and bass staves. Treble staff contains eighth and sixteenth notes, mostly ascending and then descending. Bass staff contains eighth and sixteenth notes, mostly ascending and then descending.

68

Measures 68-72: Treble and bass staves. Treble staff contains eighth and sixteenth notes, mostly ascending and then descending. Bass staff contains eighth and sixteenth notes, mostly ascending and then descending.

73

Measures 73-78: Treble staff contains eighth notes with rests. Bass staff contains chords (dyads) in each measure.

79

Measures 79-83: Treble staff contains eighth notes with rests. Bass staff contains chords in measures 79-80, then eighth notes in measures 81-83.

84

Measures 84-87: Treble staff contains chords in measures 84-85, then eighth notes in measures 86-87. Bass staff contains eighth notes in measures 84-85, then eighth notes in measures 86-87.

87

This system contains measures 87 through 90. The right hand features a melodic line with dotted rhythms and a long slur spanning measures 88 and 89. The left hand provides a steady accompaniment with eighth-note patterns.

91

This system contains measures 91 through 93. Measure 91 has a whole note in the right hand. Measure 92 includes a key signature change to one sharp (F#) in the right hand. The left hand continues with eighth-note accompaniment.

94

This system contains measures 94 through 97. The right hand has a melodic line with a slur over measures 95 and 96. The left hand maintains the eighth-note accompaniment pattern.

98

This system contains measures 98 through 102. Both hands play continuous eighth-note patterns, creating a more rhythmic texture.

103

This system contains measures 103 through 107. The eighth-note patterns in both hands continue, with some melodic variation in the right hand.

108

This system contains measures 108 through 112. The piece concludes with sustained eighth-note patterns in both hands.

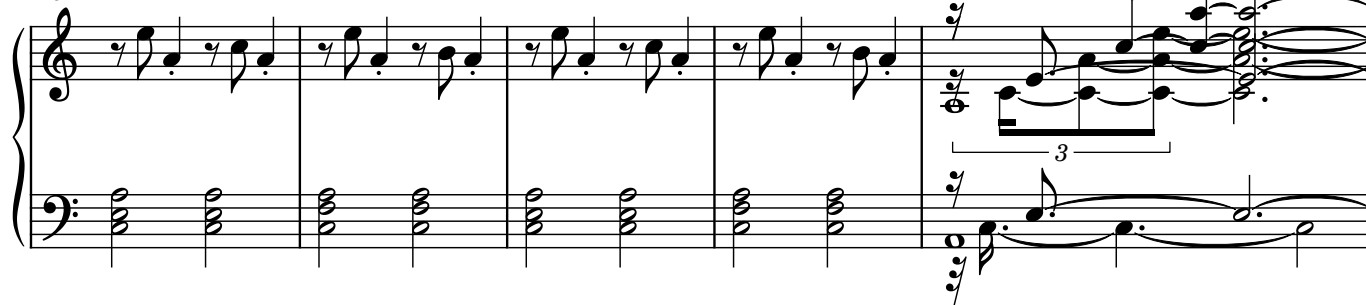
113



119



125



130

