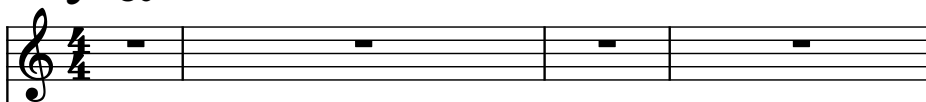
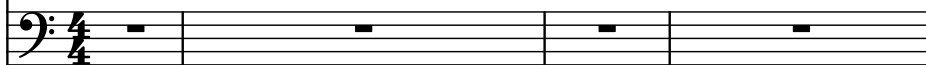


♩ = 80

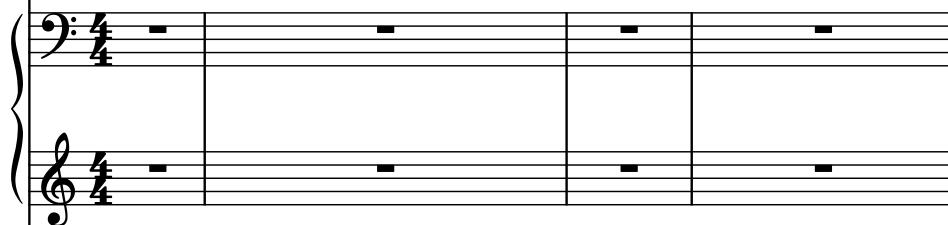
Electric Piano



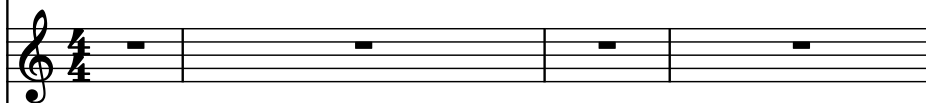
Fretless Electric Bass



Piano



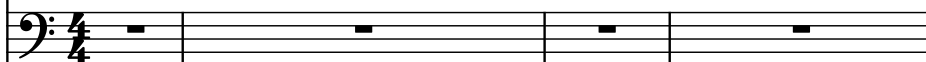
Accordion



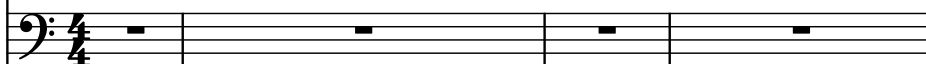
14 Hole C Chromatic Harmonica



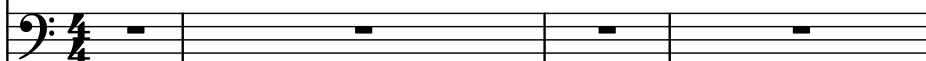
Brass



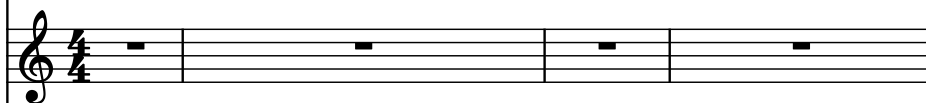
Effect Synthesizer



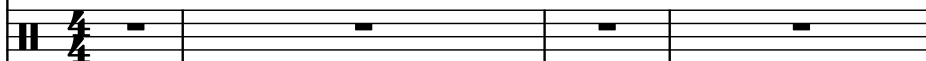
Pad Synthesizer



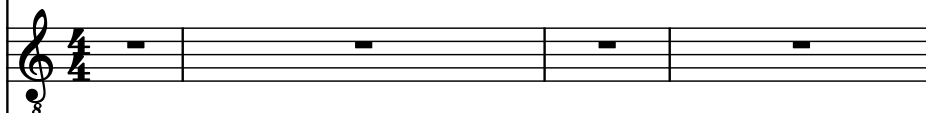
Marimba (Grand Staff)



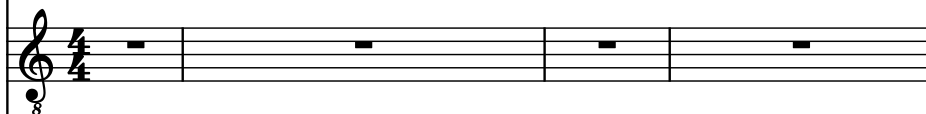
Drumset



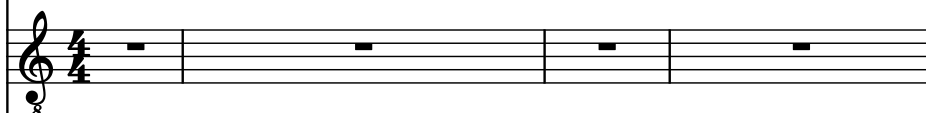
Acoustic Guitar



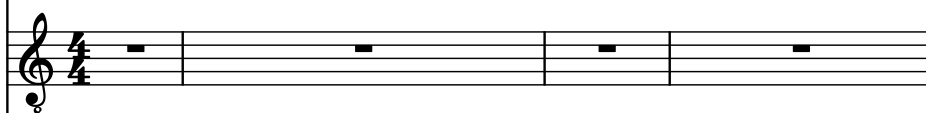
Electric Guitar



Electric Guitar



Electric Guitar



5

El. Pno.

Frtl. El. B.

Pno.

Acc.

Harm.

Br.

Synth.

Synth.

Mrm.

D. Set

Guit.

El. Guit.

El. Guit.

El. Guit.

Measures 5-9 of the musical score. The key signature has one flat (Bb). The time signature changes from 2/4 to 4/4 at measure 5. The Harm. part has a melodic line with a triplet in measure 9. The Synth. and Frtl. El. B. parts have sustained notes in measures 6-8.

10

El. Pno.

Frtl. El. B.

Pno.

Acc.

Harm.

Br.

Synth.

Synth.

Mrm.

D. Set

Guit.

El. Guit.

El. Guit.

El. Guit.

Musical score for 13 instruments across 3 measures. The instruments are: El. Pno., Frtl. El. B., Pno., Acc., Harm., Br., Synth., Synth., Mrm., D. Set, Guit., El. Guit., and El. Guit. The score is written in 4/4 time. The first measure contains musical notation for the Frtl. El. B., Harm., and Synth. parts. The second measure contains musical notation for the Frtl. El. B., Synth., and Harm. parts. The third measure contains musical notation for the Frtl. El. B., Synth., and Harm. parts. The Harm. part features a triplet of eighth notes in the second measure and a triplet of eighth notes in the third measure. The Frtl. El. B. and Synth. parts feature a half note in the first measure, a quarter note in the second measure, and a half note in the third measure. The Pno., Acc., Br., Mrm., D. Set, Guit., El. Guit., and El. Guit. parts are marked with a whole rest in all three measures.

Pdf downloaded from www.midicities.com

14

El. Pno.

Frtl. El. B.

Pno.

Acc.

Harm.

Br.

Synth.

Synth.

Mrm.

D. Set

Guit.

El. Guit.

El. Guit.

El. Guit.

15

El. Pno.

Frtl. El. B.

Pno.

Acc.

Harm.

Br.

Synth.

Synth.

Mrm.

D. Set

Guit.

El. Guit.

El. Guit.

El. Guit.

El. Pno.

Frtl. El. B.

Pno.

Acc.

Harm.

Br.

Synth.

Synth.

Mrm.

D. Set

Guit.

El. Guit.

El. Guit.

El. Guit.

16

El. Pno.

Frtl. El. B.

Pno.

Acc.

Harm.

Br.

Synth.

Synth.

Mrm.

D. Set

Guit.

El. Guit.

El. Guit.

El. Guit.

I

Redownload from www.midcities.com

17

El. Pno.

Frtl. El. B.

Pno.

Acc.

Harm.

Br.

Synth.

Synth.

Mrm.

D. Set

Guit.

El. Guit.

El. Guit.

El. Guit.

school.

8

8

8

8

18

18

El. Pno.

Frtl. El. B.

Pno.

Acc.

Harm.

Br.

Synth.

Synth.

Mrm.

D. Set

Guit.

El. Guit.

El. Guit.

El. Guit.

Downloaded from www.midcities.com

19

El. Pno.

Frtl. El. B.

Pno.

Acc.

Harm.

Br.

Synth.

Synth.

Mrm.

D. Set

Guit.

El. Guit.

El. Guit.

El. Guit.

El. Guit.

20

El. Pno.

Frtl. El. B.

Pno.

Acc.

Harm.

Br.

Synth.

Synth.

Mrm.

D. Set

Guit.

El. Guit.

El. Guit.

El. Guit.

El. Guit.

teach

5

21

El. Pno.

Frtl. El. B.

Pno.

work,

Acc.

Harm.

Br.

Synth.

Synth.

Mrm.

D. Set

Guit.

El. Guit.

El. Guit.

El. Guit.

El. Guit.

22

El. Pno.

Frtl. El. B.

Pno.

Acc.

Harm.

Br.

Synth.

Synth.

Mrm.

D. Set

Guit.

El. Guit.

El. Guit.

El. Guit.

be

5

7

3

3

23

El. Pno.

Frtl. El. B.

Pno.

Acc.

Harm.

Br.

Synth.

Synth.

Mrm.

D. Set

Guit.

El. Guit.

El. Guit.

El. Guit.

he

5

3

5

5

he

5

3

5

5

24

El. Pno.

Frtl. El. B.

Pno.

Acc.

Harm.

Br.

Synth.

Synth.

Mrm.

D. Set

Guit.

El. Guit.

El. Guit.

El. Guit.

The musical score for measures 24-26 features a variety of instruments. The first nine staves (El. Pno., Frtl. El. B., Pno., Acc., Harm., Br., Synth., Synth., Mrm.) and the D. Set staff contain rests for all three measures. The Guit. staff (measure 24) has a treble clef, key signature of one sharp (F#), and a common time signature (C). It contains a complex melodic line with triplets and slurs. The El. Guit. staff (measure 24) also has a treble clef, key signature of one sharp, and a common time signature. It contains a complex melodic line with triplets and slurs. The El. Guit. staff (measure 25) has a treble clef, key signature of one sharp, and a common time signature. It contains a complex melodic line with triplets and slurs. The El. Guit. staff (measure 26) has a treble clef, key signature of one sharp, and a common time signature. It contains a complex melodic line with triplets and slurs.

27

El. Pno.

Frtl. El. B.

Pno.

Acc.

Harm.

Br.

Synth.

Synth.

Mrm.

D. Set

Guit.

El. Guit.

El. Guit.

El. Guit.

El. Guit.

30

El. Pno.

Frtl. El. B.

Pno.

Acc.

Harm.

Br.

Synth.

Synth.

Mrm.

D. Set

Guit.

El. Guit.

El. Guit.

32

El. Pno.

Frtl. El. B.

Pno.

Acc.

Harm.

Br.

Synth.

Synth.

Mrm.

D. Set

Guit.

El. Guit.

El. Guit.

Af

5

3

8

33

33

El. Pno.

Frtl. El. B.

Pno.

park.

Acc.

Harm.

Br.

Synth.

Synth.

Mrm.

D. Set

Guit.

El. Guit.

El. Guit.

Downloaded from www.midcity5.com

34

El. Pno.

Frtl. El. B.

Pno.

don't

Acc.

Harm.

Br.

Synth.

Synth.

Mrm.

D. Set

Guit.

El. Guit.

El. Guit.

8

7

8

35

El. Pno.

Frtl. El. B.

Pno.

Acc.

Harm.

Br.

Synth.

Synth.

Mrm.

D. Set

Guit.

El. Guit.

El. Guit.

get

36

El. Pno.

Frtl. El. B.

Pno.

Acc.

Harm.

Br.

Synth.

Synth.

Mrm.

D. Set

Guit.

El. Guit.

El. Guit.

tell

8

8

37

El. Pno.

Frtl. El. B.

Pno.

life's

Acc.

Harm.

Br.

Synth.

Synth.

Mrm.

D. Set

Guit.

El. Guit.

El. Guit.

The musical score for page 23, starting at measure 37, is arranged for a large ensemble. The instruments and their parts are as follows:

- El. Pno. (Electric Piano):** A single measure with a whole rest.
- Frtl. El. B. (Fretless Electric Bass):** A line of four eighth notes, each with a dot (pedal point).
- Pno. (Piano):** A grand staff with a whole rest in both the bass and treble clefs.
- life's:** The lyrics are written above the Acc. staff.
- Acc. (Acoustic Guitar):** A line of four eighth notes, each with a dot (pedal point).
- Harm. (Harp):** A single measure with a whole rest.
- Br. (Brass):** A single measure with a whole rest.
- Synth. (Synthesizer):** Two staves, each with a single measure and a whole rest.
- Mrm. (Mellophone):** A single measure with a whole rest.
- D. Set (Drum Set):** A complex rhythmic pattern involving multiple drums, including snare, tom, and cymbal.
- Guit. (Guitar):** A line of four eighth notes, each with a dot (pedal point).
- El. Guit. (Electric Guitar):** A single measure with a whole rest.
- El. Guit. (Electric Guitar):** A line of four eighth notes, each with a dot (pedal point).

38

El. Pno.

Frtl. El. B.

Pno.

grow

Acc.

Harm.

Br.

Synth.

Synth.

Mrm.

D. Set

Guit.

El. Guit.

El. Guit.

38

39

40

41

39

El. Pno.

Frtl. El. B.

Pno.

work

Acc.

Harm.

Br.

Synth.

Synth.

Mrm.

D. Set

Guit.

El. Guit.

El. Guit.

40 $\text{♩} = 88$

El. Pno.

Frtl. El. B.

Pno.

full

Acc.

Harm.

Br.

Synth.

Synth.

Mrm.

D. Set

Guit.

El. Guit.

El. Guit.

El. Guit.

The musical score for page 26, measures 40 and 41, features a variety of instruments. The El. Pno. part in measure 40 has a tempo marking of 88 bpm. The Frtl. El. B. part plays a melodic line. The Pno. part is marked 'full'. The Acc. part plays a melodic line. The Harm. part is silent. The Br. part is silent. The Synth. parts are silent. The Mrm. part is silent. The D. Set part plays a complex rhythmic pattern. The Guit. part plays a complex rhythmic pattern. The El. Guit. parts are silent.

42

El. Pno.

Frtl. El. B.

Pno.

Acc.

Harm.

Br.

Synth.

Synth.

Mrm.

D. Set

Guit.

El. Guit.

El. Guit.

El. Guit.

43

El. Pno.

Frtl. El. B.

Pno.

Acc.

Harm.

Br.

Synth.

Synth.

Mrm.

D. Set

Guit.

El. Guit.

El. Guit.

El. Guit.

44

El. Pno.

Frtl. El. B.

Pno.

Acc.

Harm.

Br.

Synth.

Synth.

Mrm.

D. Set

Guit.

El. Guit.

El. Guit.

El. Guit.

El. Guit.

45

El. Pno.

Frtl. El. B.

Pno.

Acc.

Harm.

Br.

Synth.

Synth.

Mrm.

D. Set

Guit.

El. Guit.

El. Guit.

El. Guit.

El. Pno. staff: Measure 45 has a half note G4 and a half note F#4. Measure 46 has a half note G4 and a half note F#4. Measure 47 has a half note G4 and a half note F#4. Measure 48 has a half note G4 and a half note F#4.

Frtl. El. B. staff: Measure 45 has a whole rest. Measure 46 has a whole rest. Measure 47 has a whole rest. Measure 48 has a whole rest.

Pno. staff: Measure 45 has a whole rest. Measure 46 has a whole rest. Measure 47 has a whole rest. Measure 48 has a whole rest.

Acc. staff: Measure 45 has a whole rest. Measure 46 has a whole rest. Measure 47 has a whole rest. Measure 48 has a whole rest.

Harm. staff: Measure 45 has a whole rest. Measure 46 has a whole rest. Measure 47 has a whole rest. Measure 48 has a whole rest.

Br. staff: Measure 45 has a whole rest. Measure 46 has a whole rest. Measure 47 has a whole rest. Measure 48 has a whole rest.

Synth. staff: Measure 45 has a whole rest. Measure 46 has a whole rest. Measure 47 has a whole rest. Measure 48 has a whole rest.

Synth. staff: Measure 45 has a whole rest. Measure 46 has a whole rest. Measure 47 has a whole rest. Measure 48 has a whole rest.

Mrm. staff: Measure 45 has a whole rest. Measure 46 has a whole rest. Measure 47 has a whole rest. Measure 48 has a whole rest.

D. Set staff: Measure 45 has a half note G4 and a half note F#4. Measure 46 has a half note G4 and a half note F#4. Measure 47 has a half note G4 and a half note F#4. Measure 48 has a half note G4 and a half note F#4.

Guit. staff: Measure 45 has a whole rest. Measure 46 has a whole rest. Measure 47 has a whole rest. Measure 48 has a whole rest.

El. Guit. staff: Measure 45 has a whole rest. Measure 46 has a whole rest. Measure 47 has a whole rest. Measure 48 has a whole rest.

El. Guit. staff: Measure 45 has a whole rest. Measure 46 has a whole rest. Measure 47 has a whole rest. Measure 48 has a whole rest.

El. Guit. staff: Measure 45 has a whole rest. Measure 46 has a whole rest. Measure 47 has a whole rest. Measure 48 has a whole rest.

46

El. Pno.

Frtl. El. B.

Pno.

Acc.

Harm.

Br.

Synth.

Synth.

Mrm.

D. Set

Guit.

El. Guit.

El. Guit.

El. Guit.

8

8

8

8

47

El. Pno.

Frtl. El. B.

Pno.

Acc.

Harm.

Br.

Synth.

Synth.

Mrm.

D. Set

Guit.

El. Guit.

El. Guit.

El. Guit.

48

48

El. Pno.

Frtl. El. B.

Pno.

Acc.

Harm.

Br.

Synth.

Synth.

Mrm.

D. Set

Guit.

El. Guit.

El. Guit.

El. Guit.

El. Guit.

49

El. Pno.

Frtl. El. B.

Pno.

Acc.

Harm.

Br.

Synth.

Synth.

Mrm.

D. Set

Guit.

El. Guit.

El. Guit.

El. Guit.

El. Guit.

50

El. Pno.

Frtl. El. B.

Pno.

Acc.

Harm.

Br.

Synth.

Synth.

Mrm.

D. Set

Guit.

El. Guit.

El. Guit.

El. Guit.

51

El. Pno.

Frtl. El. B.

Pno.

Acc.

Harm.

Br.

Synth.

Synth.

Mrm.

D. Set

Guit.

El. Guit.

El. Guit.

El. Guit.

El. Pno. staff: Measure 51 contains a melodic line with eighth and sixteenth notes, including a triplet. Measure 52 contains a sustained note with a fermata.

Frtl. El. B. staff: Measure 51 contains a whole rest. Measure 52 contains a whole rest.

Pno. staff: Measure 51 contains a whole rest. Measure 52 contains a whole rest.

Acc. staff: Measure 51 contains a whole rest. Measure 52 contains a whole rest.

Harm. staff: Measure 51 contains a whole rest. Measure 52 contains a whole rest.

Br. staff: Measure 51 contains a whole rest. Measure 52 contains a whole rest.

Synth. staff: Measure 51 contains a whole rest. Measure 52 contains a whole rest.

Synth. staff: Measure 51 contains a whole rest. Measure 52 contains a whole rest.

Mrm. staff: Measure 51 contains a whole rest. Measure 52 contains a whole rest.

D. Set staff: Measure 51 contains a rhythmic pattern with eighth and sixteenth notes. Measure 52 contains a complex rhythmic pattern with eighth and sixteenth notes.

Guit. staff: Measure 51 contains a rhythmic pattern with eighth and sixteenth notes. Measure 52 contains a complex rhythmic pattern with eighth and sixteenth notes.

El. Guit. staff: Measure 51 contains a whole rest. Measure 52 contains a whole rest.

El. Guit. staff: Measure 51 contains a whole rest. Measure 52 contains a whole rest.

El. Guit. staff: Measure 51 contains a whole rest. Measure 52 contains a whole rest.

52

El. Pno.

Frtl. El. B.

Pno.

Acc.

Harm.

Br.

Synth.

Synth.

Mrm.

D. Set

Guit.

El. Guit.

El. Guit.

El. Guit.

El. Guit.

53

El. Pno.

Frtl. El. B.

Pno.

Acc.

Harm.

Br.

Synth.

Synth.

Mrm.

D. Set

Guit.

El. Guit.

El. Guit.

El. Guit.

El. Guit.

54

El. Pno.

Frtl. El. B.

Pno.

Acc.

Harm.

Br.

Synth.

Synth.

Mrm.

D. Set

Guit.

El. Guit.

El. Guit.

El. Guit.

8

8

8

55

El. Pno.

Frtl. El. B.

Pno.

Acc.

Harm.

Br.

Synth.

Synth.

Mrm.

D. Set

Guit.

El. Guit.

El. Guit.

El. Guit.

55

56

57

58

56

El. Pno.

Frtl. El. B.

Pno.

Acc.

Harm.

Br.

Synth.

Synth.

Mrm.

D. Set

Guit.

El. Guit.

El. Guit.

El. Guit.

El. Pno.

Frtl. El. B.

Pno.

Acc.

Harm.

Br.

Synth.

Synth.

Mrm.

D. Set

Guit.

El. Guit.

El. Guit.

El. Guit.

57

El. Pno.

Frtl. El. B.

Pno.

Acc.

Harm.

Br.

Synth.

Synth.

Mrm.

D. Set

Guit.

El. Guit.

El. Guit.

El. Guit.

58

El. Pno.

Frtl. El. B.

Pno.

Acc.

Harm.

Br.

Synth.

Synth.

Mrm.

D. Set

Guit.

El. Guit.

El. Guit.

El. Guit.

59

El. Pno.

Frtl. El. B.

Pno.

Acc.

Harm.

Br.

Synth.

Synth.

Mrm.

D. Set

Guit.

El. Guit.

El. Guit.

El. Guit.

Downloaded from www.midcities.com

60

El. Pno.

Frtl. El. B.

Pno.

Acc.

Harm.

Br.

Synth.

Synth.

Mrm.

D. Set

Guit.

El. Guit.

El. Guit.

El. Guit.

The musical score for page 45, starting at measure 60, is arranged for a large ensemble. The instruments and their parts are as follows:

- El. Pno.:** Active part with eighth and sixteenth notes.
- Frtl. El. B.:** Active part with eighth notes.
- Pno.:** Grand staff with active bass line and silent treble line.
- Acc., Harm., Br., Synth. (both):** Silent staves.
- Mrm.:** Active part with a short melodic phrase.
- D. Set:** Active part with a complex rhythmic pattern.
- Guit.:** Active part with eighth and sixteenth notes.
- El. Guit. (all three):** Active parts, with the last three staves featuring long sustained notes.

61

El. Pno.

Frtl. El. B.

Pno.

Acc.

Harm.

Br.

Synth.

Synth.

Mrm.

D. Set

Guit.

El. Guit.

El. Guit.

El. Guit.

El. Pno.

Frtl. El. B.

Pno.

Acc.

Harm.

Br.

Synth.

Synth.

Mrm.

D. Set

Guit.

El. Guit.

El. Guit.

El. Guit.

62

El. Pno.

Frtl. El. B.

Pno.

Acc.

Harm.

Br.

Synth.

Synth.

Mrm.

D. Set

Guit.

El. Guit.

El. Guit.

El. Guit.

El. Pno.

Frtl. El. B.

Pno.

Acc.

Harm.

Br.

Synth.

Synth.

Mrm.

D. Set

Guit.

El. Guit.

El. Guit.

El. Guit.

63

El. Pno.

Frtl. El. B.

Pno.

Acc.

Harm.

Br.

Synth.

Synth.

Mrm.

D. Set

Guit.

El. Guit.

El. Guit.

El. Guit.

64

El. Pno.

Frtl. El. B.

Pno.

Acc.

Harm.

Br.

Synth.

Synth.

Mrm.

D. Set

Guit.

El. Guit.

El. Guit.

El. Guit.

The musical score for page 49 begins at measure 64. The instrumentation includes Electric Piano (El. Pno.), Fretless Electric Bass (Frtl. El. B.), Piano (Pno.), Accordion (Acc.), Harmonica (Harm.), Brass (Br.), Synthesizer (Synth.), Maracas (Mrm.), Drums (D. Set), Guitar (Guit.), and three Electric Guitars (El. Guit.). The El. Pno. and Frtl. El. B. are the primary active instruments in this section. The Pno. plays a short, ascending phrase. The Mrm. and D. Set provide rhythmic accompaniment. The Guit. has a long, sustained note. The other instruments are silent.

65

El. Pno.

Frtl. El. B.

Pno.

Acc.

Harm.

Br.

Synth.

Synth.

Mrm.

D. Set

Guit.

El. Guit.

El. Guit.

El. Guit.

Downloaded from www.midicities.com

66 $\text{♩} = 176$

El. Pno.

Frtl. El. B.

Pno.

Acc.

Harm.

Br.

Synth.

Synth.

Mrm.

D. Set

Guit.

El. Guit.

El. Guit.

El. Guit.

The musical score for page 51, measures 66-69, is presented in a multi-staff format. The tempo is marked as 176 BPM. The instruments included are El. Pno., Frtl. El. B., Pno., Acc., Harm., Br., Synth., Synth., Mrm., D. Set, Guit., El. Guit., El. Guit., and El. Guit. The score shows a variety of musical notations, including notes, rests, and dynamic markings, across the different staves. The guitar part in measure 66 is particularly complex, featuring a series of chords and a melodic line. The drum set part in measure 67 is also prominent, with a variety of drum sounds and patterns. The overall arrangement is dense and features a mix of electronic and acoustic instruments.

67

El. Pno.

Frtl. El. B.

Pno.

Acc.

Harm.

Br.

Synth.

Synth.

Mrm.

D. Set

Guit.

El. Guit.

El. Guit.

El. Guit.

Downloaded from www.midicities.com

68

El. Pno.

Frtl. El. B.

Pno.

Acc.

Harm.

Br.

Synth.

Synth.

Mrm.

D. Set

Guit.

El. Guit.

El. Guit.

El. Guit.

69

El. Pno.

Frtl. El. B.

Pno.

Acc.

Harm.

Br.

Synth.

Synth.

Mrm.

D. Set

Guit.

El. Guit.

El. Guit.

El. Guit.

El. Pno. staff: Treble clef, whole note chord (C4, E4, G4) at measure 69.

Frtl. El. B. staff: Bass clef, quarter note (C2), quarter rest, eighth note (C2), eighth note (D2), quarter rest, eighth note (C2), eighth note (D2), quarter note (E2).

Pno. staff: Treble and Bass clefs. Treble: quarter note (C4), quarter rest, eighth note (C4), eighth note (D4), quarter note (E4), quarter note (F4), quarter note (G4), quarter note (A4), quarter note (B4), quarter note (C5), quarter note (B4), quarter note (A4), quarter note (G4), quarter note (F4), quarter note (E4), quarter note (D4), quarter note (C4). Bass: quarter note (C2), quarter note (D2), quarter note (E2), quarter note (F2), quarter note (G2), quarter note (A2), quarter note (B2), quarter note (C3), quarter note (B2), quarter note (A2), quarter note (G2), quarter note (F2), quarter note (E2), quarter note (D2), quarter note (C2).

Acc. staff: Treble clef, whole rest.

Harm. staff: Treble clef, whole rest.

Br. staff: Bass clef, whole rest.

Synth. staff: Treble clef, whole rest.

Synth. staff: Treble clef, whole rest.

Mrm. staff: Treble clef, whole rest.

D. Set staff: Treble clef, quarter note (C4), quarter note (D4), quarter note (E4), quarter note (F4), quarter note (G4), quarter note (A4), quarter note (B4), quarter note (C5), quarter note (B4), quarter note (A4), quarter note (G4), quarter note (F4), quarter note (E4), quarter note (D4), quarter note (C4). 'x' marks above notes at measures 69, 70, 71, 72.

Guit. staff: Treble clef, quarter note (C4), quarter note (D4), quarter note (E4), quarter note (F4), quarter note (G4), quarter note (A4), quarter note (B4), quarter note (C5), quarter note (B4), quarter note (A4), quarter note (G4), quarter note (F4), quarter note (E4), quarter note (D4), quarter note (C4). 'x' marks above notes at measures 69, 70, 71, 72.

El. Guit. staff: Treble clef, whole rest.

El. Guit. staff: Treble clef, whole rest.

El. Guit. staff: Treble clef, whole rest.

70

El. Pno.

Frtrl. El. B.

Pno.

Acc.

Harm.

Br.

Synth.

Synth.

Mrm.

D. Set

Guit.

El. Guit.

El. Guit.

El. Guit.

The musical score for page 55, measures 70-71, features a variety of instruments. The Electric Piano (El. Pno.) and Fretless Electric Bass (Frtrl. El. B.) play a melodic line. The Piano (Pno.) part is split into two staves, with the right hand playing a complex, fast-moving melody and the left hand providing a rhythmic accompaniment. The Accordion (Acc.), Harmonica (Harm.), and Brass (Br.) parts are silent. The Synth. parts are also silent. The Mrm. part is silent. The D. Set part features a drum kit notation. The Guit. part includes a guitar solo. The El. Guit. parts are electric guitar staves.

72

El. Pno.

Frtl. El. B.

Pno.

Acc.

Harm.

Br.

Synth.

Synth.

Mrm.

D. Set

Guit.

El. Guit.

El. Guit.

73

El. Pno.

Frtl. El. B.

Pno.

Acc.

Harm.

Br.

Synth.

Synth.

Mrm.

D. Set

Guit.

El. Guit.

El. Guit.

El. Guit.

The musical score for page 57, starting at measure 73, is arranged for a large ensemble. The instruments and their parts are as follows:

- El. Pno.:** Plays a sustained chord in the right hand.
- Frtl. El. B.:** Plays a melodic line in the bass clef, featuring a half note and a quarter note.
- Pno.:** Features a complex accompaniment with a long sustain across the entire measure.
- Acc.:** Silent.
- Harm.:** Silent.
- Br.:** Silent.
- Synth.:** Two staves, both silent.
- Mrm.:** Silent.
- D. Set:** Features a complex drum pattern with various rhythms and accents.
- Guit.:** Features a complex guitar part with various rhythms and accents.
- El. Guit.:** Three staves, all silent.

74

El. Pno.

Frtl. El. B.

Pno.

Acc.

Harm.

Br.

Synth.

Synth.

Mrm.

D. Set

Guit.

El. Guit.

El. Guit.

El. Guit.

75

El. Pno.

Frtl. El. B.

Pno.

Acc.

Harm.

Br.

Synth.

Synth.

Mrm.

D. Set

Guit.

El. Guit.

El. Guit.

El. Guit.

76

El. Pno.

Frtl. El. B.

Pno.

Acc.

Harm.

Br.

Synth.

Synth.

Mrm.

D. Set

Guit.

El. Guit.

El. Guit.

El. Guit.

El. Guit.

77

El. Pno.

Frtl. El. B.

Pno.

Acc.

Harm.

Br.

Synth.

Synth.

Mrm.

D. Set

Guit.

El. Guit.

El. Guit.

El. Guit.

78

El. Pno.

Frtl. El. B.

Pno.

Acc.

Harm.

Br.

Synth.

Synth.

Mrm.

D. Set

Guit.

El. Guit.

El. Guit.

El. Pno. staff: Treble clef, starting with a rest, then a series of chords and a melodic line.

Frtl. El. B. staff: Bass clef, starting with a rest, then a series of chords and a melodic line.

Pno. staff: Grand staff (Treble and Bass clefs), featuring complex chords and melodic lines.

Acc. staff: Treble clef, starting with a rest, then a series of chords and a melodic line.

Harm. staff: Treble clef, starting with a rest, then a series of chords and a melodic line.

Br. staff: Bass clef, starting with a rest, then a series of chords and a melodic line.

Synth. staff: Treble clef, starting with a rest, then a series of chords and a melodic line.

Synth. staff: Treble clef, starting with a rest, then a series of chords and a melodic line.

Mrm. staff: Treble clef, starting with a rest, then a series of chords and a melodic line.

D. Set staff: Percussion clef, featuring various rhythmic patterns and rests.

Guit. staff: Treble clef, featuring a series of chords and a melodic line.

El. Guit. staff: Treble clef, starting with a rest, then a series of chords and a melodic line.

El. Guit. staff: Treble clef, starting with a rest, then a series of chords and a melodic line.

79

El. Pno.

Frtl. El. B.

Pno.

Acc.

Harm.

Br.

Synth.

Synth.

Mrm.

D. Set

Guit.

El. Guit.

El. Guit.

El. Guit.

80

El. Pno.

Frtl. El. B.

Pno.

Acc.

Harm.

Br.

Synth.

Synth.

Mrm.

D. Set

Guit.

El. Guit.

El. Guit.

8

8

8

81

El. Pno.

Frtl. El. B.

Pno.

Acc.

Harm.

Br.

Synth.

Synth.

Mrm.

D. Set

Guit.

El. Guit.

El. Guit.

El. Guit.

82

El. Pno.

Frtl. El. B.

Pno.

Acc.

Harm.

Br.

Synth.

Synth.

Mrm.

D. Set

Guit.

El. Guit.

El. Guit.

El. Guit.

83

El. Pno.

Frtl. El. B.

Pno.

Acc.

Harm.

Br.

Synth.

Synth.

Mrm.

D. Set

Guit.

El. Guit.

El. Guit.

El. Guit.

84

El. Pno.

Frtl. El. B.

Pno.

Acc.

Harm.

Br.

Synth.

Synth.

Mrm.

D. Set

Guit.

El. Guit.

El. Guit.

El. Guit.

Downloaded from www.midcities.com

85

El. Pno.

Frtl. El. B.

Pno.

Acc.

Harm.

Br.

Synth.

Synth.

Mrm.

D. Set

Guit.

El. Guit.

El. Guit.

El. Guit.

86

El. Pno.

Frtl. El. B.

Pno.

Acc.

Harm.

Br.

Synth.

Synth.

Mrm.

D. Set

Guit.

El. Guit.

El. Guit.

El. Guit.

Detailed description of the musical score: The score is for measures 86 through 89.
Measure 86: El. Pno. has a half note chord (F4, A4). Frtl. El. B. has a half note (F2). Pno. has a half note chord (F4, A4) in the right hand and a half note (F4) in the left hand.
Measure 87: El. Pno. has a half note chord (F4, A4). Frtl. El. B. has a half note (F2). Pno. has a half note chord (F4, A4) in the right hand and a half note (F4) in the left hand.
Measure 88: El. Pno. has a half note chord (F4, A4). Frtl. El. B. has a half note (F2). Pno. has a half note chord (F4, A4) in the right hand and a half note (F4) in the left hand.
Measure 89: El. Pno. has a half note chord (F4, A4). Frtl. El. B. has a half note (F2). Pno. has a half note chord (F4, A4) in the right hand and a half note (F4) in the left hand.
Measures 90-93: All staves have whole rests.

87

El. Pno.

Frtl. El. B.

Pno.

Acc.

Harm.

Br.

Synth.

Synth.

Mrm.

D. Set

Guit.

El. Guit.

El. Guit.

El. Guit.

88

El. Pno.

Frtl. El. B.

Pno.

Acc.

Harm.

Br.

Synth.

Synth.

Mrm.

D. Set

Guit.

El. Guit.

El. Guit.

El. Guit.

88 89 90 91 92

89

El. Pno.

Frtl. El. B.

Pno.

Acc.

Harm.

Br.

Synth.

Synth.

Mrm.

D. Set

Guit.

El. Guit.

El. Guit.

El. Guit.

The musical score for page 73, starting at measure 89, is arranged for a large ensemble. The staves from top to bottom are: El. Pno., Frtl. El. B., Pno. (with a brace indicating two staves), Acc., Harm., Br., Synth., Synth., Mrm., D. Set, Guit., El. Guit., El. Guit., and El. Guit. The Piano part is the most active, featuring a complex melody in the right hand and a bass line in the left hand. The Electric Bass and Electric Piano parts are also active. The Drum Set and Guitar parts provide rhythmic support. The Electric Guitar parts are present but mostly silent. The Accordion, Harmonica, Brass, Synth., and Maracas parts are also present but mostly silent.

90

El. Pno.

Frtl. El. B.

Pno.

Acc.

Harm.

Br.

Synth.

Synth.

Mrm.

D. Set

Guit.

El. Guit.

El. Guit.

El. Guit.

91

El. Pno.

Frtl. El. B.

Pno.

Acc.

Harm.

Br.

Synth.

Synth.

Mrm.

D. Set

Guit.

El. Guit.

El. Guit.

El. Guit.

92

El. Pno.

Frtl. El. B.

Pno.

Acc.

Harm.

Br.

Synth.

Synth.

Mrm.

D. Set

Guit.

El. Guit.

El. Guit.

El. Guit.

Measure 92: El. Pno. has a half note G4. Frtl. El. B. has a half note G2. Pno. has a half note G4. Acc. has a half note G4. Harm. has a half note G4. Br. has a half note G2. Synth. has a half note G4. Synth. has a half note G4. Mrm. has a half note G4. D. Set has a half note G4. Guit. has a half note G4. El. Guit. has a half note G4. El. Guit. has a half note G4. El. Guit. has a half note G4.

Measure 93: El. Pno. has a half note G4. Frtl. El. B. has a half note G2. Pno. has a half note G4. Acc. has a half note G4. Harm. has a half note G4. Br. has a half note G2. Synth. has a half note G4. Synth. has a half note G4. Mrm. has a half note G4. D. Set has a half note G4. Guit. has a half note G4. El. Guit. has a half note G4. El. Guit. has a half note G4. El. Guit. has a half note G4.

Measure 94: El. Pno. has a half note G4. Frtl. El. B. has a half note G2. Pno. has a half note G4. Acc. has a half note G4. Harm. has a half note G4. Br. has a half note G2. Synth. has a half note G4. Synth. has a half note G4. Mrm. has a half note G4. D. Set has a half note G4. Guit. has a half note G4. El. Guit. has a half note G4. El. Guit. has a half note G4. El. Guit. has a half note G4.

Measure 95: El. Pno. has a half note G4. Frtl. El. B. has a half note G2. Pno. has a half note G4. Acc. has a half note G4. Harm. has a half note G4. Br. has a half note G2. Synth. has a half note G4. Synth. has a half note G4. Mrm. has a half note G4. D. Set has a half note G4. Guit. has a half note G4. El. Guit. has a half note G4. El. Guit. has a half note G4. El. Guit. has a half note G4.

93

El. Pno.

Frtl. El. B.

Pno.

Acc.

Harm.

Br.

Synth.

Synth.

Mrm.

D. Set

Guit.

El. Guit.

El. Guit.

El. Guit.

Detailed description of the musical score: The score is for a multi-instrumental piece. Measure 93 is the starting point. The El. Pno. staff has a treble clef and contains a few notes. The Frtl. El. B. staff has a bass clef and contains a few notes, including a triplet of eighth notes. The Pno. staff is written in grand staff notation (treble and bass clefs). The Acc., Harm., Br., Synth., and Synth. staves are empty. The Mrm. staff has a treble clef and contains a rhythmic pattern of eighth notes. The D. Set staff has a drum clef and contains a complex rhythmic pattern with many 'x' marks. The Guit. staff has a treble clef and contains a melodic line. The three El. Guit. staves are empty.

94

El. Pno.

Frtl. El. B.

Pno.

Acc.

Harm.

Br.

Synth.

Synth.

Mrm.

D. Set

Guit.

El. Guit.

El. Guit.

The musical score for page 78, measures 94-97, features the following instruments and parts:

- El. Pno.:** Treble clef, measures 94-97.
- Frtl. El. B.:** Bass clef, measures 94-97, including triplet markings.
- Pno.:** Grand staff (treble and bass clefs), measures 94-97.
- Acc.:** Treble clef, measures 94-97.
- Harm.:** Treble clef, measures 94-97.
- Br.:** Bass clef, measures 94-97.
- Synth.:** Treble clef, measures 94-97.
- Synth.:** Treble clef, measures 94-97.
- Mrm.:** Treble clef, measures 94-97.
- D. Set:** Percussion staff, measures 94-97.
- Guit.:** Treble clef, measures 94-97.
- El. Guit.:** Treble clef, measures 94-97.
- El. Guit.:** Treble clef, measures 94-97.

95

El. Pno.

Frtl. El. B.

Pno.

Acc.

Harm.

Br.

Synth.

Synth.

Mrm.

D. Set

Guit.

El. Guit.

El. Guit.

El. Guit.

96

El. Pno.

Frtl. El. B.

Pno.

Acc.

Harm.

Br.

Synth.

Synth.

Mrm.

D. Set

Guit.

El. Guit.

El. Guit.

El. Guit.

El. Pno. staff: Treble clef, measures 96-99. Measure 96 has a long note with a slur. Measure 97 has a long note with a slur. Measure 98 has a triplet of eighth notes. Measure 99 has a long note with a slur.

Frtl. El. B. staff: Bass clef, measures 96-99. Measure 96 has a long note with a slur. Measure 97 has a long note with a slur. Measure 98 has a triplet of eighth notes. Measure 99 has a long note with a slur.

Pno. staff: Treble and Bass clefs, measures 96-99. Measure 96 has a long note with a slur. Measure 97 has a long note with a slur. Measure 98 has a triplet of eighth notes. Measure 99 has a long note with a slur.

Acc. staff: Treble clef, measures 96-99. Measure 96 has a long note with a slur. Measure 97 has a long note with a slur. Measure 98 has a triplet of eighth notes. Measure 99 has a long note with a slur.

Harm. staff: Treble clef, measures 96-99. Measure 96 has a long note with a slur. Measure 97 has a long note with a slur. Measure 98 has a triplet of eighth notes. Measure 99 has a long note with a slur.

Br. staff: Bass clef, measures 96-99. Measure 96 has a long note with a slur. Measure 97 has a long note with a slur. Measure 98 has a triplet of eighth notes. Measure 99 has a long note with a slur.

Synth. staff: Treble clef, measures 96-99. Measure 96 has a long note with a slur. Measure 97 has a long note with a slur. Measure 98 has a triplet of eighth notes. Measure 99 has a long note with a slur.

Synth. staff: Treble clef, measures 96-99. Measure 96 has a long note with a slur. Measure 97 has a long note with a slur. Measure 98 has a triplet of eighth notes. Measure 99 has a long note with a slur.

Mrm. staff: Treble clef, measures 96-99. Measure 96 has a long note with a slur. Measure 97 has a long note with a slur. Measure 98 has a triplet of eighth notes. Measure 99 has a long note with a slur.

D. Set staff: Treble clef, measures 96-99. Measure 96 has a long note with a slur. Measure 97 has a long note with a slur. Measure 98 has a triplet of eighth notes. Measure 99 has a long note with a slur.

Guit. staff: Treble clef, measures 96-99. Measure 96 has a long note with a slur. Measure 97 has a long note with a slur. Measure 98 has a triplet of eighth notes. Measure 99 has a long note with a slur.

El. Guit. staff: Treble clef, measures 96-99. Measure 96 has a long note with a slur. Measure 97 has a long note with a slur. Measure 98 has a triplet of eighth notes. Measure 99 has a long note with a slur.

El. Guit. staff: Treble clef, measures 96-99. Measure 96 has a long note with a slur. Measure 97 has a long note with a slur. Measure 98 has a triplet of eighth notes. Measure 99 has a long note with a slur.

El. Guit. staff: Treble clef, measures 96-99. Measure 96 has a long note with a slur. Measure 97 has a long note with a slur. Measure 98 has a triplet of eighth notes. Measure 99 has a long note with a slur.

97

El. Pno.

Frtl. El. B.

Pno.

Acc.

Harm.

Br.

Synth.

Synth.

Mrm.

D. Set

Guit.

El. Guit.

El. Guit.

El. Guit.

El. Pno.

Frtl. El. B.

Pno.

Acc.

Harm.

Br.

Synth.

Synth.

Mrm.

D. Set

Guit.

El. Guit.

El. Guit.

El. Guit.

98

El. Pno.

Frtl. El. B.

Pno.

Acc.

Harm.

Br.

Synth.

Synth.

Mrm.

D. Set

Guit.

El. Guit.

El. Guit.

El. Guit.

The musical score for page 82, measures 98-101, features the following instruments and parts:

- El. Pno.:** Treble clef, measures 98-101 with notes and rests.
- Frtl. El. B.:** Bass clef, measures 98-101 with notes and rests.
- Pno.:** Grand staff (treble and bass clefs), measures 98-101 with notes and rests.
- Acc.:** Treble clef, measures 98-101 with rests.
- Harm.:** Treble clef, measures 98-101 with rests.
- Br.:** Bass clef, measures 98-101 with rests.
- Synth.:** Treble clef, measures 98-101 with rests.
- Synth.:** Treble clef, measures 98-101 with notes and rests.
- Mrm.:** Treble clef, measures 98-101 with rests.
- D. Set:** Treble clef, measures 98-101 with notes and rests.
- Guit.:** Treble clef, measures 98-101 with notes and rests.
- El. Guit.:** Treble clef, measures 98-101 with rests.
- El. Guit.:** Treble clef, measures 98-101 with rests.
- El. Guit.:** Treble clef, measures 98-101 with rests.

99

El. Pno.

Frtl. El. B.

Pno.

Acc.

Harm.

Br.

Synth.

Synth.

Mrm.

D. Set

Guit.

El. Guit.

El. Guit.

El. Guit.

El. Guit.

100

El. Pno.

Frtl. El. B.

Pno.

Acc.

Harm.

Br.

Synth.

Synth.

Mrm.

D. Set

Guit.

El. Guit.

El. Guit.

El. Guit.

g

g

g

101

El. Pno.

Frtl. El. B.

Pno.

Acc.

Harm.

Br.

Synth.

Synth.

Mrm.

D. Set

Guit.

El. Guit.

El. Guit.

El. Guit.

102

El. Pno.

Frtl. El. B.

Pno.

Acc.

Harm.

Br.

Synth.

Synth.

Mrm.

D. Set

Guit.

El. Guit.

El. Guit.

El. Guit.

103

El. Pno.

Frtl. El. B.

Pno.

Acc.

Harm.

Br.

Synth.

Synth.

Mrm.

D. Set

Guit.

El. Guit.

El. Guit.

El. Guit.

El. Pno.

Frtl. El. B.

Pno.

Acc.

Harm.

Br.

Synth.

Synth.

Mrm.

D. Set

Guit.

El. Guit.

El. Guit.

El. Guit.

104

El. Pno.

Frtl. El. B.

Pno.

Acc.

Harm.

Br.

Synth.

Synth.

Mrm.

D. Set

Guit.

El. Guit.

El. Guit.

El. Guit.

El. Pno. staff: Treble clef, key signature of one sharp (F#), measures 104-107.

Frtl. El. B. staff: Bass clef, measures 104-107.

Pno. staff: Grand staff (treble and bass clefs), measures 104-107.

Acc. staff: Treble clef, measures 104-107.

Harm. staff: Treble clef, measures 104-107.

Br. staff: Bass clef, measures 104-107.

Synth. staff: Treble clef, measures 104-107.

Synth. staff: Treble clef, measures 104-107.

Mrm. staff: Treble clef, measures 104-107.

D. Set staff: Drum kit notation, measures 104-107.

Guit. staff: Treble clef, 8-measure rest, measures 104-107.

El. Guit. staff: Treble clef, 8-measure rest, measures 104-107.

El. Guit. staff: Treble clef, 8-measure rest, measures 104-107.

El. Guit. staff: Treble clef, 8-measure rest, measures 104-107.

105

El. Pno.

Frtl. El. B.

Pno.

Acc.

Harm.

Br.

Synth.

Synth.

Mrm.

D. Set

Guit.

El. Guit.

El. Guit.

El. Guit.

106

El. Pno.

Frtl. El. B.

Pno.

Acc.

Harm.

Br.

Synth.

Synth.

Mrm.

D. Set

Guit.

El. Guit.

El. Guit.

El. Guit.

The musical score for page 90, measures 106-109, is arranged for a large ensemble. The staves are as follows:

- El. Pno.:** Treble clef. Measures 106-109 show a melodic line with eighth and sixteenth notes, including a triplet in measure 107.
- Frtl. El. B.:** Bass clef. Measures 106-109 show a melodic line with eighth and sixteenth notes, including a triplet in measure 107.
- Pno.:** Grand staff (treble and bass clefs). Measures 106-109 show a complex arrangement of chords and melodic lines, with a triplet in measure 107.
- Acc.:** Treble clef. Measures 106-109 show a whole rest.
- Harm.:** Treble clef. Measures 106-109 show a whole rest.
- Br.:** Bass clef. Measures 106-109 show a whole rest.
- Synth. (top):** Treble clef. Measures 106-109 show a whole rest.
- Synth. (bottom):** Treble clef. Measures 106-109 show a whole rest.
- Mrm.:** Treble clef. Measures 106-109 show a whole rest.
- D. Set:** Percussion clef. Measures 106-109 show a complex rhythmic pattern with various drum symbols.
- Guit.:** Treble clef. Measures 106-109 show a melodic line with eighth and sixteenth notes, including a triplet in measure 107.
- El. Guit. (top):** Treble clef. Measures 106-109 show a whole rest.
- El. Guit. (middle):** Treble clef. Measures 106-109 show a whole rest.
- El. Guit. (bottom):** Treble clef. Measures 106-109 show a whole rest.

107

El. Pno.

Frtl. El. B.

Pno.

Acc.

Harm.

Br.

Synth.

Synth.

Mrm.

D. Set

Guit.

El. Guit.

El. Guit.

El. Guit.

108

El. Pno.

Frtl. El. B.

Pno.

Acc.

Harm.

Br.

Synth.

Synth.

Mrm.

D. Set

Guit.

El. Guit.

El. Guit.

El. Guit.

109

El. Pno.

Frtl. El. B.

Pno.

Acc.

Harm.

Br.

Synth.

Synth.

Mrm.

D. Set

Guit.

El. Guit.

El. Guit.

El. Guit.

El. Pno. staff: Treble clef, starting with a half note G4, followed by a half note F#4, then a half note E4, and a half note D4, all tied together. The staff ends with a double bar line and a repeat sign.

Frtl. El. B. staff: Bass clef, starting with a half note G2, followed by a half note F#2, then a half note E2, and a half note D2, all tied together. The staff ends with a double bar line and a repeat sign.

Pno. staff: Grand staff (Treble and Bass clefs). The right hand starts with a half note G4, followed by a half note F#4, then a half note E4, and a half note D4, all tied together. The left hand starts with a half note G2, followed by a half note F#2, then a half note E2, and a half note D2, all tied together. The staff ends with a double bar line and a repeat sign.

Acc. staff: Treble clef, starting with a half note G4, followed by a half note F#4, then a half note E4, and a half note D4, all tied together. The staff ends with a double bar line and a repeat sign.

Harm. staff: Treble clef, starting with a half note G4, followed by a half note F#4, then a half note E4, and a half note D4, all tied together. The staff ends with a double bar line and a repeat sign.

Br. staff: Bass clef, starting with a half note G2, followed by a half note F#2, then a half note E2, and a half note D2, all tied together. The staff ends with a double bar line and a repeat sign.

Synth. staff: Treble clef, starting with a half note G4, followed by a half note F#4, then a half note E4, and a half note D4, all tied together. The staff ends with a double bar line and a repeat sign.

Synth. staff: Treble clef, starting with a half note G4, followed by a half note F#4, then a half note E4, and a half note D4, all tied together. The staff ends with a double bar line and a repeat sign.

Mrm. staff: Treble clef, starting with a half note G4, followed by a half note F#4, then a half note E4, and a half note D4, all tied together. The staff ends with a double bar line and a repeat sign.

D. Set staff: Percussion clef, starting with a half note G4, followed by a half note F#4, then a half note E4, and a half note D4, all tied together. The staff ends with a double bar line and a repeat sign.

Guit. staff: Treble clef, starting with a half note G4, followed by a half note F#4, then a half note E4, and a half note D4, all tied together. The staff ends with a double bar line and a repeat sign.

El. Guit. staff: Treble clef, starting with a half note G4, followed by a half note F#4, then a half note E4, and a half note D4, all tied together. The staff ends with a double bar line and a repeat sign.

El. Guit. staff: Treble clef, starting with a half note G4, followed by a half note F#4, then a half note E4, and a half note D4, all tied together. The staff ends with a double bar line and a repeat sign.

El. Guit. staff: Treble clef, starting with a half note G4, followed by a half note F#4, then a half note E4, and a half note D4, all tied together. The staff ends with a double bar line and a repeat sign.

110

El. Pno.

Frtl. El. B.

Pno.

Acc.

Harm.

Br.

Synth.

Synth.

Mrm.

D. Set

Guit.

El. Guit.

El. Guit.

111

111

El. Pno.

Frtl. El. B.

Pno.

Acc.

Harm.

Br.

Synth.

Synth.

Mrm.

D. Set

Guit.

El. Guit.

El. Guit.

El. Guit.

112

El. Pno.

Frtl. El. B.

Pno.

Acc.

Harm.

Br.

Synth.

Synth.

Mrm.

D. Set

Guit.

El. Guit.

El. Guit.

El. Guit.

113

El. Pno.

Frtl. El. B.

Pno.

Acc.

Harm.

Br.

Synth.

Synth.

Mrm.

D. Set

Guit.

El. Guit.

El. Guit.

El. Pno.

Frtl. El. B.

Pno.

Acc.

Harm.

Br.

Synth.

Synth.

Mrm.

D. Set

Guit.

El. Guit.

El. Guit.

114

El. Pno.

Frtl. El. B.

Pno.

Don't do this

Acc.

Harm.

Br.

Synth.

Synth.

Mrm.

D. Set

Guit.

El. Guit.

El. Guit.

El. Guit.

3

115

El. Pno.

Frtl. El. B.

Pno.

Acc.

Harm.

Br.

Synth.

Synth.

Mrm.

D. Set

Guit.

El. Guit.

El. Guit.

El. Guit.

116

El. Pno.

Frtl. El. B.

Pno.

don't do that.

Acc.

Harm.

Br.

Synth.

Synth.

Mrm.

D. Set

Guit.

El. Guit.

El. Guit.

El. Guit.

8

8

8

3

3

117

El. Pno.

Frtl. El. B.

Pno.

Acc.

Harm.

Br.

Synth.

Synth.

Mrm.

D. Set

Guit.

El. Guit.

El. Guit.

El. Guit.

Downloaded from www.midcities.com

118

El. Pno.

Frtl. El. B.

Pno.

What Make

Acc.

Harm.

Br.

Synth.

Synth.

Mrm.

D. Set

Guit.

El. Guit.

El. Guit.

El. Guit.

El. Pno.

Frtl. El. B.

Pno.

What Make

Acc.

Harm.

Br.

Synth.

Synth.

Mrm.

D. Set

Guit.

El. Guit.

El. Guit.

El. Guit.

120

El. Pno.

Frtl. El. B.

Pno.

do know at?

Acc.

Harm.

Br.

Synth.

Synth.

Mrm.

D. Set

Guit.

El. Guit.

El. Guit.

El. Guit.

do know at?

121

El. Pno.

Frtl. El. B.

Pno.

Don't

Acc.

Harm.

Br.

Synth.

Synth.

Mrm.

D. Set

Guit.

El. Guit.

El. Guit.

El. Guit.

El. Pno.

Frtl. El. B.

Pno.

Don't

Acc.

Harm.

Br.

Synth.

Synth.

Mrm.

D. Set

Guit.

El. Guit.

El. Guit.

El. Guit.

122

122

El. Pno.

Frtl. El. B.

Pno.

crit i cise,

Acc.

Harm.

Br.

Synth.

Synth.

Mrm.

D. Set

Guit.

El. Guit.

El. Guit.

El. Guit.

Downloaded from www.midicties.com

123

El. Pno.

Frtl. El. B.

Pno.

Acc.

Harm.

Br.

Synth.

Synth.

Mrm.

D. Set

Guit.

El. Guit.

El. Guit.

El. Guit.

Red downloaded from www.midcities.com

124

El. Pno.

Frtl. El. B.

Pno.

old and wise.

Acc.

Harm.

Br.

Synth.

Synth.

Mrm.

D. Set

Guit.

El. Guit.

El. Guit.

El. Guit.

old and wise.

3

125

El. Pno.

Frtl. El. B.

Pno.

Acc.

Harm.

Br.

Synth.

Synth.

Mrm.

D. Set

Guit.

El. Guit.

El. Guit.

El. Guit.

El. Guit.

126

El. Pno.

Frtl. El. B.

Pno.

Do Don't

Acc.

Harm.

Br.

Synth.

Synth.

Mrm.

D. Set

Guit.

El. Guit.

El. Guit.

El. Guit.

128

El. Pno.

Frtl. El. B.

Pno.

come out eyes.

Acc.

Harm.

Br.

Synth.

Synth.

Mrm.

D. Set

Guit.

El. Guit.

El. Guit.

8

8

8

129

El. Pno.

Frtl. El. B.

Pno.

Acc.

Harm.

Br.

Synth.

Synth.

Mrm.

D. Set

Guit.

El. Guit.

El. Guit.

The musical score for page 111, starting at measure 129, is arranged for a large ensemble. The instruments and their parts are as follows:

- El. Pno.:** Silent throughout the section.
- Frtl. El. B.:** Plays a melodic line in the bass register, featuring eighth and sixteenth notes.
- Pno.:** Features a complex accompaniment with a treble clef staff playing a melodic line and a bass clef staff playing a rhythmic pattern of chords.
- Acc.:** Sustained notes in the treble clef.
- Harm.:** Sustained notes in the treble clef.
- Br.:** Sustained notes in the treble clef.
- Synth.:** Two silent synthesizer staves.
- Mrm.:** Silent throughout the section.
- D. Set:** Drum set part with various rhythmic patterns, including a triplet marked '3'.
- Guit.:** Electric guitar part with a melodic line in the treble clef.
- El. Guit.:** Two silent electric guitar staves.

The score concludes with a double bar line and a repeat sign.

130

El. Pno.

Frtl. El. B.

Pno.

Acc.

Harm.

Br.

Synth.

Synth.

Mrm.

D. Set

Guit.

El. Guit.

El. Guit.

El. Guit.

131

El. Pno.

Frtl. El. B.

Pno.

Acc.

Harm.

Br.

Synth.

Synth.

Mrm.

D. Set

Guit.

El. Guit.

El. Guit.

El. Guit.

El. Pno.

Frtl. El. B.

Pno.

Acc.

Harm.

Br.

Synth.

Synth.

Mrm.

D. Set

Guit.

El. Guit.

El. Guit.

El. Guit.

132

El. Pno.

Frtl. El. B.

Pno.

Acc.

Harm.

Br.

Synth.

Synth.

Mrm.

D. Set

Guit.

El. Guit.

El. Guit.

El. Guit.

The musical score for page 114, measures 132-135, is arranged for a large ensemble. The staves are as follows:

- El. Pno.:** Treble clef, mostly rests with some activity in measure 135.
- Frtl. El. B.:** Bass clef, mostly rests with some activity in measure 135.
- Pno.:** Grand staff (treble and bass clefs), featuring chords and moving lines.
- Acc.:** Treble clef, mostly rests.
- Harm.:** Treble clef, mostly rests.
- Br.:** Treble clef, mostly rests.
- Synth.:** Treble clef, mostly rests.
- Synth.:** Treble clef, mostly rests.
- Mrm.:** Treble clef, mostly rests.
- D. Set:** Percussion staff with various rhythmic patterns and accents.
- Guit.:** Treble clef, featuring a triplet in measure 133 and various melodic lines.
- El. Guit.:** Treble clef, mostly rests.
- El. Guit.:** Treble clef, featuring a melodic line with a crescendo.
- El. Guit.:** Treble clef, featuring a melodic line with a crescendo.

133

El. Pno.

Frtl. El. B.

Pno.

Acc.

Harm.

Br.

Synth.

Synth.

Mrm.

D. Set

Guit.

El. Guit.

El. Guit.

El. Guit.

El. Guit.

134

El. Pno.

Frtl. El. B.

Pno.

Acc.

Harm.

Br.

Synth.

Synth.

Mrm.

D. Set

Guit.

El. Guit.

El. Guit.

Downloaded from www.midwestties.com

135

El. Pno.

Frtl. El. B.

Pno.

Acc.

Harm.

Br.

Synth.

Synth.

Mrm.

D. Set

Guit.

El. Guit.

El. Guit.

El. Guit.

Downloaded from www.midcities.com

136

El. Pno.

Frtl. El. B.

Pno.

Acc.

Harm.

Br.

Synth.

Synth.

Mrm.

D. Set

Guit.

El. Guit.

El. Guit.

El. Guit.

El. Pno.

Frtl. El. B.

Pno.

Acc.

Harm.

Br.

Synth.

Synth.

Mrm.

D. Set

Guit.

El. Guit.

El. Guit.

El. Guit.

137 $\text{♩} = 88$

El. Pno.

Frtl. El. B.

Pno.

May be I'm mis tak en ex

Acc.

Harm.

Br.

Synth.

Synth.

Mrm.

D. Set

Guit.

El. Guit.

El. Guit.

The musical score for page 119, measures 137-140, is presented. The tempo is marked as 88 bpm. The score includes parts for El. Pno., Frtl. El. B., Pno., Acc., Harm., Br., Synth., Mrm., D. Set, Guit., El. Guit., and another El. Guit. The lyrics 'May be I'm mis tak en ex' are under the vocal line. The guitar parts feature complex chordal textures and effects.

138

El. Pno.

Frtl. El. B.

Pno.

you to fight; or

Acc.

Harm.

Br.

Synth.

Synth.

Mrm.

D. Set

Guit.

El. Guit.

El. Guit.

PDF downloaded from www.midcities.com

139

El. Pno.

Frtl. El. B.

Pno.

may be I'm just cra I don't know

Acc.

Harm.

Br.

Synth.

Synth.

Mrm.

D. Set

Guit.

El. Guit.

El. Guit.

140

El. Pno.

Frtl. El. B.

Pno.

Acc.

Harm.

Br.

Synth.

Synth.

Mrm.

D. Set

Guit.

El. Guit.

El. Guit.

wrong from right.

141

El. Pno.

Frtl. El. B.

Pno.

But while I'm still liv ing, I've

Acc.

Harm.

Br.

Synth.

Synth.

Mrm.

D. Set

Guit.

El. Guit.

El. Guit.

142

El. Pno.

Frtl. El. B.

Pno.

Acc.

Harm.

Br.

Synth.

Synth.

Mrm.

D. Set

Guit.

El. Guit.

El. Guit.

this it's

5

8

142

143

143

El. Pno.

Frtl. El. B.

Pno.

al ways up to you you wan na

Acc.

Harm.

Br.

Synth.

Synth.

Mrm.

D. Set

Guit.

El. Guit.

El. Guit.

144

El. Pno.

Frtl. El. B.

Pno.

that, wan na see that, wan na

Acc.

Harm.

Br.

Synth.

Synth.

Mrm.

D. Set

Guit.

El. Guit.

El. Guit.

145

El. Pno.

Frtl. El. B.

Pno.

see that way.

Acc.

Harm.

Br.

Synth.

Synth.

Mrm.

D. Set

Guit.

El. Guit.

El. Guit.

147

El. Pno.

Frtl. El. B.

Pno.

Acc.

Harm.

Br.

Synth.

Synth.

Mrm.

D. Set

Guit.

El. Guit.

El. Guit.

El. Guit.

El. Guit.

148

El. Pno.

Frtl. El. B.

Pno.

Acc.

Harm.

Br.

Synth.

Synth.

Mrm.

D. Set

Guit.

El. Guit.

El. Guit.

El. Guit.

Downloaded from www.midcities.com

130

149

El. Pno.

Frtrl. El. B.

Pno.

Acc.

Harm.

Br.

Synth.

Synth.

Mrm.

D. Set

Guit.

El. Guit.

El. Guit.

El. Guit.

Downloaded from www.pianofiles.com

150

El. Pno.

Frtl. El. B.

Pno.

Acc.

Harm.

Br.

Synth.

Synth.

Mrm.

D. Set

Guit.

El. Guit.

El. Guit.

El. Guit.

El. Guit.