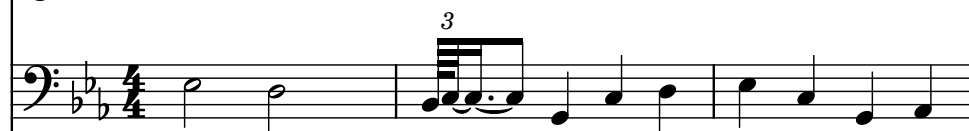


♩ = 120

B♭ Trumpet, trumpet



Tuba, tuba



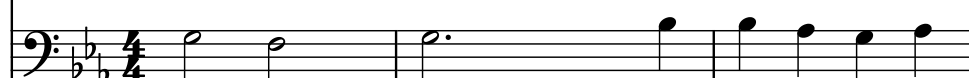
Horn in F, french horn



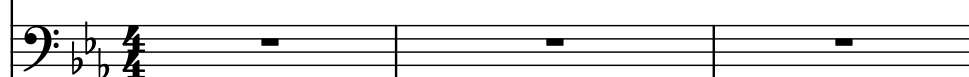
B♭ Trumpet, trumpet2



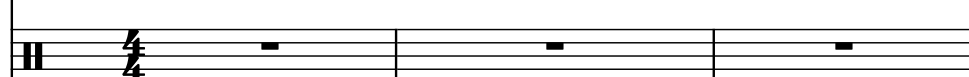
Trombone, trombone



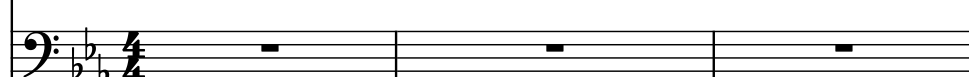
Trombone, bass trombone



Drumset, cymbals



Timpani, tympani



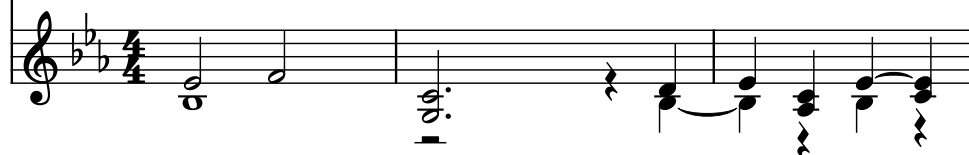
Contrabasses, strings (bass)



Violins, strings (melody)



Strings, strings (alto/tenor)



4

Bb Tpt.

Tba.

F Hn.

Bb Tpt.

Tbn.

Tbn.

D. Set

Timp.

Cbs.

Vlins.

St.

7

Bb Tpt.

Tba.

F Hn.

Bb Tpt.

Tbn.

Tbn.

D. Set

Timp.

Cbs.

Vlms.

St.

9

Bb Tpt.

Tba.

F Hn.

Bb Tpt.

Tbn.

Tbn.

D. Set

Timp.

Cbs.

Vlms.

St.

3

12

B \flat Tpt.

Tba.

F Hn.

B \flat Tpt.

Tbn.

Tbn.

D. Set

Timp.

Cbs.

Vlins.

St.

3

14

Bb Tpt.

Tba.

F Hn.

Bb Tpt.

Tbn.

Tbn.

D. Set

Timp.

Cbs.

Vlms.

St.

Detailed description: This page contains measures 14, 15, and 16 of a musical score. The key signature has two flats (B-flat major or D-flat minor), and the time signature is 4/4. The instruments and their parts are as follows: Bb Tpt. (first and second), Tba. (Trombone), F Hn. (French Horn), Tbn. (Trombone), D. Set (Drum Set), Timp. (Timpani), Cbs. (Cymbals), Vlms. (Violins), and St. (Strings). Measure 14 shows various melodic and harmonic lines. Measure 15 features a prominent timpani roll and cymbal activity. Measure 16 concludes the sequence with sustained notes and a final chord.

17

B \flat Tpt.

Tba.

F Hn.

B \flat Tpt.

Tbn.

Tbn.

D. Set

Timp.

Cbs.

Vlms.

St.

The musical score for measures 17-19 is written for a large ensemble. The key signature has three flats (B \flat , E \flat , A \flat). Measure 17 features a B \flat Tpt. melody, a Tba. line with a triplet of eighth notes, and an F Hn. line with a triplet of eighth notes. Measure 18 continues the B \flat Tpt. melody, with Tbn. and Tbn. lines providing harmonic support. Measure 19 features a B \flat Tpt. melody, a Tba. line with a triplet of eighth notes, and an F Hn. line with a triplet of eighth notes. The D. Set part includes a snare drum pattern. The Timp. part includes a triplet of eighth notes. The Cbs. part includes a triplet of eighth notes. The Vlms. part includes a triplet of eighth notes. The St. part includes a triplet of eighth notes.

20

B \flat Tpt. Tba. F Hn. B \flat Tpt. Tbn. Tbn. D. Set Timp. Cbs. Vlms. St.

3 3 3

8

23

B \flat Tpt.

Tba.

F Hn.

B \flat Tpt.

Tbn.

Tbn.

D. Set

Timp.

Cbs.

Vlins.

St.

Detailed description: This is a page of a musical score, page 9, starting at measure 23. The score is for a large ensemble and is written in B-flat major (two flats) and 4/4 time. The instruments listed on the left are B-flat Trumpet (B \flat Tpt.), Tuba (Tba.), Flute (F Hn.), B-flat Trumpet (B \flat Tpt.), Trombone (Tbn.), Trombone (Tbn.), Double Bass (D. Set), Timpani (Timp.), Cello (Cbs.), Violins (Vlins.), and Strings (St.). The score consists of four measures. Measure 23 shows the B \flat Tpt. and Tba. playing a half note G \flat , while the F Hn. and the second B \flat Tpt. play a half note A \flat . The Tbn. and the second Tbn. play a half note B \flat . The D. Set is silent. The Timp. plays a half note C \flat . The Cbs. play a half note D \flat . The Vlins. play a half note E \flat . The St. play a half note F \flat . Measure 24 shows the B \flat Tpt. and Tba. playing a half note A \flat , while the F Hn. and the second B \flat Tpt. play a half note B \flat . The Tbn. and the second Tbn. play a half note C \flat . The D. Set is silent. The Timp. plays a half note D \flat . The Cbs. play a half note E \flat . The Vlins. play a half note F \flat . The St. play a half note G \flat . Measure 25 shows the B \flat Tpt. and Tba. playing a half note B \flat , while the F Hn. and the second B \flat Tpt. play a half note C \flat . The Tbn. and the second Tbn. play a half note D \flat . The D. Set is silent. The Timp. plays a half note E \flat . The Cbs. play a half note F \flat . The Vlins. play a half note G \flat . The St. play a half note A \flat . Measure 26 shows the B \flat Tpt. and Tba. playing a half note C \flat , while the F Hn. and the second B \flat Tpt. play a half note D \flat . The Tbn. and the second Tbn. play a half note E \flat . The D. Set is silent. The Timp. plays a half note F \flat . The Cbs. play a half note G \flat . The Vlins. play a half note A \flat . The St. play a half note B \flat .

27

Bb Tpt.

Tba.

F Hn.

Bb Tpt.

Tbn.

Tbn.

D. Set

Timp.

Cbs.

Vlms.

St.

Detailed description: This page contains the musical notation for measures 27 and 28 of a symphony. The score is written for a large ensemble. The key signature has two flats (B-flat major or D-flat minor), and the time signature is 4/4. Measure 27 begins with a double bar line. The instruments and their parts are as follows: Bb Tpt. (first and second staves) play a half note G4 and a half note F#4. Tba. (third staff) plays a half note G2. F Hn. (fourth staff) plays a half note G4. Bb Tpt. (fifth staff) plays a half note G4. Tbn. (sixth staff) plays a half note G2. Tbn. (seventh staff) plays a half note G2. D. Set (eighth staff) has a rest. Timp. (ninth staff) plays a half note G2. Cbs. (tenth staff) plays a half note G2. Vlms. (eleventh staff) play a half note G4. St. (twelfth staff) plays a half note G2. Measure 28 begins with a double bar line. The instruments and their parts are as follows: Bb Tpt. (first and second staves) play a half note G4. Tba. (third staff) plays a half note G2. F Hn. (fourth staff) plays a half note G4. Bb Tpt. (fifth staff) plays a half note G4. Tbn. (sixth staff) plays a half note G2. Tbn. (seventh staff) plays a half note G2. D. Set (eighth staff) has a rest. Timp. (ninth staff) plays a half note G2. Cbs. (tenth staff) plays a half note G2. Vlms. (eleventh staff) play a half note G4. St. (twelfth staff) plays a half note G2.