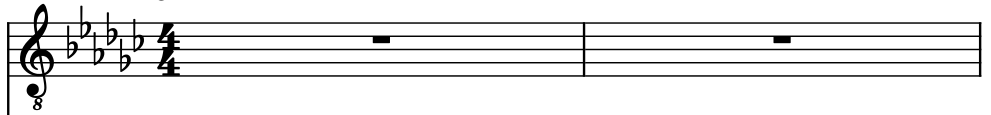
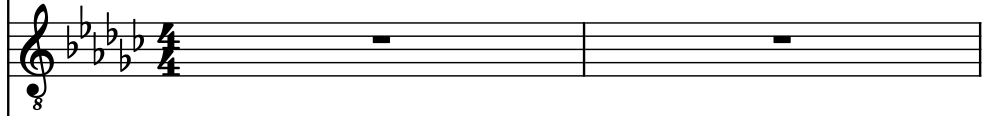


♩ = 180

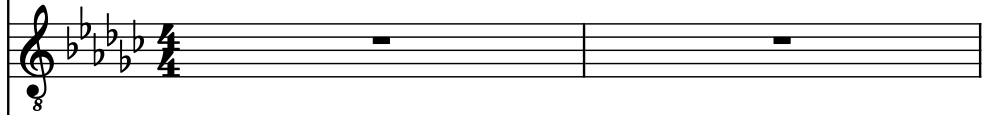
Electric Guitar, Lead Guitar



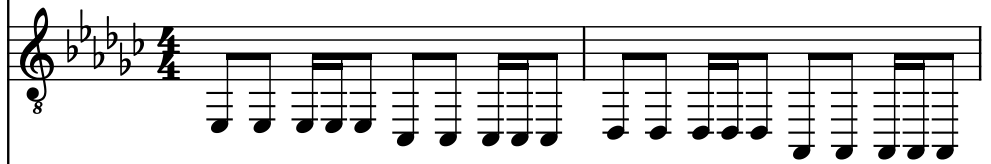
Electric Guitar



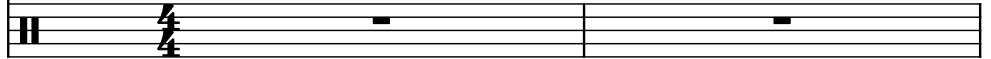
Electric Guitar, Rythm Guitar



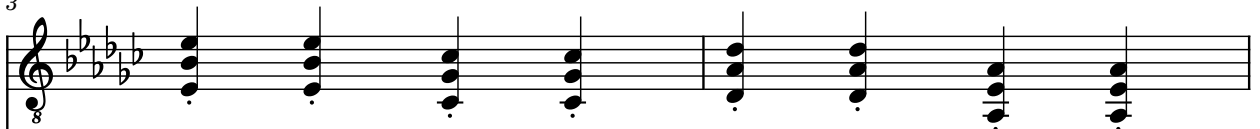
Electric Guitar, Bass



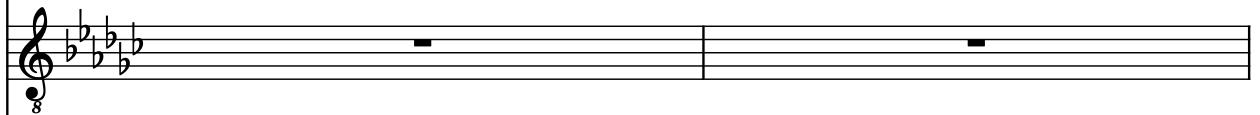
Drumset, Percussion



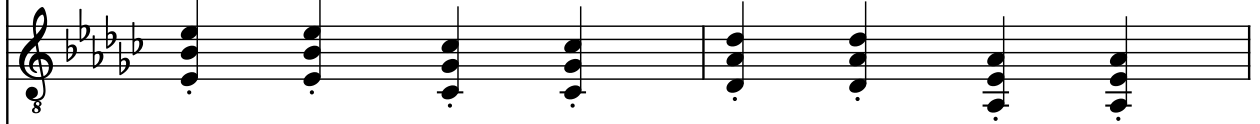
3
El. Guit.



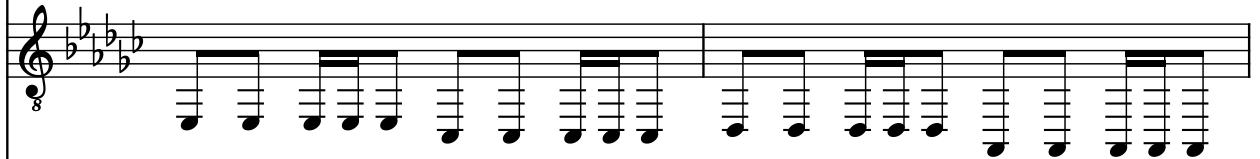
El. Guit.



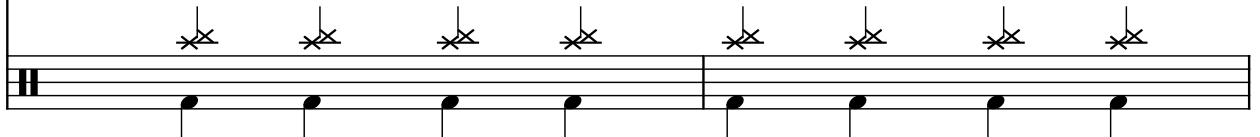
El. Guit.



El. Guit.



D. Set



5

El. Guit.

El. Guit.

El. Guit.

El. Guit.

D. Set

7

El. Guit.

El. Guit.

El. Guit.

El. Guit.

D. Set

9

El. Guit.

El. Guit.

El. Guit.

El. Guit.

D. Set

11

El. Guit.

El. Guit.

El. Guit.

El. Guit.

D. Set

13

El. Guit.

El. Guit.

El. Guit.

El. Guit.

D. Set

15

El. Guit.

El. Guit.

El. Guit.

El. Guit.

D. Set

17

El. Guit.

El. Guit.

El. Guit.

El. Guit.

D. Set

19

El. Guit.

El. Guit.

El. Guit.

El. Guit.

D. Set

21

El. Guit.

El. Guit.

El. Guit.

El. Guit.

D. Set

8

8

8

8

8

23

El. Guit.

El. Guit.

El. Guit.

El. Guit.

D. Set

8

8

8

8

8

25

El. Guit.

El. Guit.

El. Guit.

El. Guit.

D. Set

El. Guit.

El. Guit.

El. Guit.

El. Guit.

D. Set

27

El. Guit.

El. Guit.

El. Guit.

El. Guit.

D. Set

El. Guit.

El. Guit.

El. Guit.

El. Guit.

D. Set

30

El. Guit.

El. Guit.

El. Guit.

El. Guit.

D. Set

The musical score for measures 30-31 features four electric guitar staves and one double bass staff. The key signature has four flats (B-flat, E-flat, A-flat, D-flat). Measure 30 shows a progression of chords: a B-flat major triad (B-flat, D-flat, F) in the first two guitars, and a B-flat major triad (B-flat, D-flat, F) in the third and fourth guitars. The double bass staff plays a melodic line: B-flat, D-flat, F, A-flat, B-flat, D-flat, F, A-flat. Measure 31 shows a progression of chords: a B-flat major triad (B-flat, D-flat, F) in the first two guitars, and a B-flat major triad (B-flat, D-flat, F) in the third and fourth guitars. The double bass staff plays a melodic line: B-flat, D-flat, F, A-flat, B-flat, D-flat, F, A-flat.

32

El. Guit.

El. Guit.

El. Guit.

El. Guit.

D. Set

The musical score for measures 32-34 features four electric guitar staves and one double bass staff. The key signature has four flats (B-flat, E-flat, A-flat, D-flat). Measure 32 shows a progression of chords: a B-flat major triad (B-flat, D-flat, F) in the first two guitars, and a B-flat major triad (B-flat, D-flat, F) in the third and fourth guitars. The double bass staff plays a melodic line: B-flat, D-flat, F, A-flat, B-flat, D-flat, F, A-flat. Measure 33 shows a progression of chords: a B-flat major triad (B-flat, D-flat, F) in the first two guitars, and a B-flat major triad (B-flat, D-flat, F) in the third and fourth guitars. The double bass staff plays a melodic line: B-flat, D-flat, F, A-flat, B-flat, D-flat, F, A-flat. Measure 34 shows a progression of chords: a B-flat major triad (B-flat, D-flat, F) in the first two guitars, and a B-flat major triad (B-flat, D-flat, F) in the third and fourth guitars. The double bass staff plays a melodic line: B-flat, D-flat, F, A-flat, B-flat, D-flat, F, A-flat.

35

El. Guit.

El. Guit.

El. Guit.

El. Guit.

D. Set

38

El. Guit.

El. Guit.

El. Guit.

El. Guit.

D. Set

41

El. Guit.

El. Guit.

El. Guit.

El. Guit.

D. Set

8

8

8

8

44

El. Guit.

El. Guit.

El. Guit.

El. Guit.

D. Set

8

8

8

8

47

El. Guit.

El. Guit.

El. Guit.

El. Guit.

D. Set

49

El. Guit.

El. Guit.

El. Guit.

El. Guit.

D. Set

51

El. Guit.

El. Guit.

El. Guit.

El. Guit.

D. Set

54

El. Guit.

El. Guit.

El. Guit.

El. Guit.

D. Set

57

El. Guit.

El. Guit.

El. Guit.

El. Guit.

D. Set

60

El. Guit.

El. Guit.

El. Guit.

El. Guit.

D. Set

63

El. Guit.

El. Guit.

El. Guit.

El. Guit.

D. Set

8

8

8

8

8

64

El. Guit.

El. Guit.

El. Guit.

El. Guit.

D. Set

8

8

8

8

8

65

El. Guit.

El. Guit.

El. Guit.

El. Guit.

D. Set

67

El. Guit.

El. Guit.

El. Guit.

El. Guit.

D. Set

70

El. Guit.

El. Guit.

El. Guit.

El. Guit.

D. Set

8

72

El. Guit.

El. Guit.

El. Guit.

El. Guit.

D. Set

8

74

El. Guit.

El. Guit.

El. Guit.

El. Guit.

D. Set

76

El. Guit.

El. Guit.

El. Guit.

El. Guit.

D. Set

78

El. Guit.

El. Guit.

El. Guit.

El. Guit.

D. Set

8

8

8

8

8

80

El. Guit.

El. Guit.

El. Guit.

El. Guit.

D. Set

8

8

8

8

8

82

El. Guit.

El. Guit.

El. Guit.

El. Guit.

D. Set

84

El. Guit.

El. Guit.

El. Guit.

El. Guit.

D. Set

86

El. Guit.

El. Guit.

El. Guit.

El. Guit.

D. Set

88

El. Guit.

El. Guit.

El. Guit.

El. Guit.

D. Set

90

El. Guit.

El. Guit.

El. Guit.

El. Guit.

D. Set

92

El. Guit.

El. Guit.

El. Guit.

El. Guit.

D. Set

94

El. Guit.

El. Guit.

El. Guit.

El. Guit.

D. Set

8

97

El. Guit.

El. Guit.

El. Guit.

El. Guit.

D. Set

8

99

El. Guit.

El. Guit.

El. Guit.

El. Guit.

D. Set

101

El. Guit.

El. Guit.

El. Guit.

El. Guit.

D. Set

102

El. Guit.

El. Guit.

El. Guit.

El. Guit.

D. Set

8

8

8

8

104

El. Guit.

El. Guit.

El. Guit.

El. Guit.

D. Set

8

3

3

3

3

3

3

3

3

8

8

8

8

106

El. Guit.

El. Guit.

El. Guit.

El. Guit.

D. Set

108

El. Guit.

El. Guit.

El. Guit.

El. Guit.

D. Set

110

El. Guit.

El. Guit.

El. Guit.

El. Guit.

D. Set

111

El. Guit.

El. Guit.

El. Guit.

El. Guit.

D. Set

112

El. Guit.

El. Guit.

El. Guit.

El. Guit.

D. Set

113

El. Guit.

El. Guit.

El. Guit.

El. Guit.

D. Set

114

El. Guit.

El. Guit.

El. Guit.

El. Guit.

D. Set

8

8

8

8

115

El. Guit.

El. Guit.

El. Guit.

El. Guit.

D. Set

8

8

8

8

118

El. Guit.

El. Guit.

El. Guit.

El. Guit.

D. Set

8

8

8

8

120

El. Guit.

El. Guit.

El. Guit.

El. Guit.

D. Set

8

8

8

8

122

El. Guit.

El. Guit.

El. Guit.

El. Guit.

D. Set

124

El. Guit.

El. Guit.

El. Guit.

El. Guit.

D. Set

126

El. Guit.

El. Guit.

El. Guit.

El. Guit.

D. Set

128

El. Guit.

El. Guit.

El. Guit.

El. Guit.

D. Set

130

El. Guit.

El. Guit.

El. Guit.

El. Guit.

D. Set

132

El. Guit.

El. Guit.

El. Guit.

El. Guit.

D. Set

134

El. Guit.

El. Guit.

El. Guit.

El. Guit.

D. Set

8

8

8

8

136

El. Guit.

El. Guit.

El. Guit.

El. Guit.

D. Set

8

8

8

8

138

El. Guit.

El. Guit.

El. Guit.

El. Guit.

D. Set

140

El. Guit.

El. Guit.

El. Guit.

El. Guit.

D. Set

142

El. Guit.

El. Guit.

El. Guit.

El. Guit.

D. Set

144

El. Guit.

El. Guit.

El. Guit.

El. Guit.

D. Set

147

El. Guit.

El. Guit.

El. Guit.

El. Guit.

D. Set

150

El. Guit.

El. Guit.

El. Guit.

El. Guit.

D. Set

153

El. Guit.

El. Guit.

El. Guit.

El. Guit.

D. Set

159

El. Guit.

El. Guit.

El. Guit.

El. Guit.

D. Set

8

8

8

8

162

El. Guit.

El. Guit.

El. Guit.

El. Guit.

D. Set

8

8

8

8

165

El. Guit.

El. Guit.

El. Guit.

El. Guit.

D. Set

168

El. Guit.

El. Guit.

El. Guit.

El. Guit.

D. Set

171

El. Guit.

El. Guit.

El. Guit.

El. Guit.

D. Set

174

El. Guit.

El. Guit.

El. Guit.

El. Guit.

D. Set

177

El. Guit.

El. Guit.

El. Guit.

El. Guit.

D. Set

The musical score for measures 177-180 consists of five staves. The first four staves are for electric guitar (El. Guit.) and the fifth is for double bass (D. Set). The key signature has four flats (B-flat, E-flat, A-flat, D-flat) and the time signature is 8/8. Measure 177: The first guitar staff has a whole rest. The second guitar staff has a whole note chord (B-flat, E-flat, A-flat, D-flat). The third and fourth guitar staves have a whole note chord (B-flat, E-flat, A-flat, D-flat). The double bass staff has a whole note chord (B-flat, E-flat, A-flat, D-flat). Measure 178: The first guitar staff has a whole rest. The second guitar staff has a whole note chord (B-flat, E-flat, A-flat, D-flat). The third and fourth guitar staves have a whole note chord (B-flat, E-flat, A-flat, D-flat). The double bass staff has a whole note chord (B-flat, E-flat, A-flat, D-flat). Measure 179: The first guitar staff has a whole rest. The second guitar staff has a whole note chord (B-flat, E-flat, A-flat, D-flat). The third and fourth guitar staves have a whole note chord (B-flat, E-flat, A-flat, D-flat). The double bass staff has a whole note chord (B-flat, E-flat, A-flat, D-flat). Measure 180: The first guitar staff has a whole rest. The second guitar staff has a whole note chord (B-flat, E-flat, A-flat, D-flat). The third and fourth guitar staves have a whole note chord (B-flat, E-flat, A-flat, D-flat). The double bass staff has a whole note chord (B-flat, E-flat, A-flat, D-flat).