

$\text{♩} = 153$

4

6

8

10

12

14

16

18

20

The image displays a page of musical notation for a piano piece, consisting of five systems of staves numbered 12 through 20. The music is written in a key with two flats (B-flat and E-flat) and a 3/4 time signature. Each system consists of a grand staff with a treble and bass clef. The notation includes various musical symbols such as notes, rests, and dynamic markings. The piece features a mix of eighth and sixteenth notes, often beamed together, and includes some complex rhythmic patterns. The overall style is that of a classical or romantic-era piano composition.

22



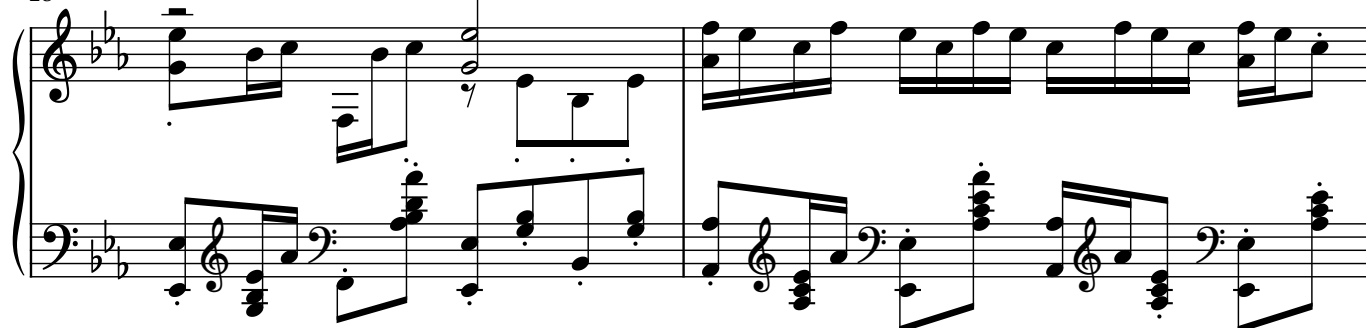
24



26



28



30



32



34

36

38

40

42

44

Measures 44 and 45 of a piano piece. The key signature has two flats (B-flat and E-flat). Measure 44 features a treble staff with a descending eighth-note scale and a bass staff with a descending eighth-note scale. Measure 45 features a treble staff with a descending eighth-note scale and a bass staff with a descending eighth-note scale.

46

Measures 46 and 47 of a piano piece. The key signature has two flats (B-flat and E-flat). Measure 46 features a treble staff with a descending eighth-note scale and a bass staff with a descending eighth-note scale. Measure 47 features a treble staff with a descending eighth-note scale and a bass staff with a descending eighth-note scale.

48

Measures 48 and 49 of a piano piece. The key signature has two flats (B-flat and E-flat). Measure 48 features a treble staff with a descending eighth-note scale and a bass staff with a descending eighth-note scale. Measure 49 features a treble staff with a descending eighth-note scale and a bass staff with a descending eighth-note scale.

50

Measures 50 and 51 of a piano piece. The key signature has two flats (B-flat and E-flat). Measure 50 features a treble staff with a descending eighth-note scale and a bass staff with a descending eighth-note scale. Measure 51 features a treble staff with a descending eighth-note scale and a bass staff with a descending eighth-note scale.

52

Measures 52 and 53 of a piano piece. The key signature has two flats (B-flat and E-flat). Measure 52 features a treble staff with a descending eighth-note scale and a bass staff with a descending eighth-note scale. Measure 53 features a treble staff with a descending eighth-note scale and a bass staff with a descending eighth-note scale.

54

Measures 54 and 55 of a musical score in B-flat major (two flats). Measure 54 features a treble staff with a half note G4, a quarter note A4, and a half note Bb4, followed by a whole rest. The bass staff has a half note G2, a quarter note A2, and a half note Bb2, followed by a whole rest. Measure 55 features a treble staff with a half note G4, a quarter note A4, and a half note Bb4, followed by a whole rest. The bass staff has a half note G2, a quarter note A2, and a half note Bb2, followed by a whole rest.

56

Measures 56 and 57 of a musical score in B-flat major (two flats). Measure 56 features a treble staff with a half note G4, a quarter note A4, and a half note Bb4, followed by a whole rest. The bass staff has a half note G2, a quarter note A2, and a half note Bb2, followed by a whole rest. Measure 57 features a treble staff with a half note G4, a quarter note A4, and a half note Bb4, followed by a whole rest. The bass staff has a half note G2, a quarter note A2, and a half note Bb2, followed by a whole rest.

58

Measures 58 and 59 of a musical score in B-flat major (two flats). Measure 58 features a treble staff with a half note G4, a quarter note A4, and a half note Bb4, followed by a whole rest. The bass staff has a half note G2, a quarter note A2, and a half note Bb2, followed by a whole rest. Measure 59 features a treble staff with a half note G4, a quarter note A4, and a half note Bb4, followed by a whole rest. The bass staff has a half note G2, a quarter note A2, and a half note Bb2, followed by a whole rest.

60

Measures 60 and 61 of a musical score in B-flat major (two flats). Measure 60 features a treble staff with a half note G4, a quarter note A4, and a half note Bb4, followed by a whole rest. The bass staff has a half note G2, a quarter note A2, and a half note Bb2, followed by a whole rest. Measure 61 features a treble staff with a half note G4, a quarter note A4, and a half note Bb4, followed by a whole rest. The bass staff has a half note G2, a quarter note A2, and a half note Bb2, followed by a whole rest.