

$\text{♩} = 120$

5

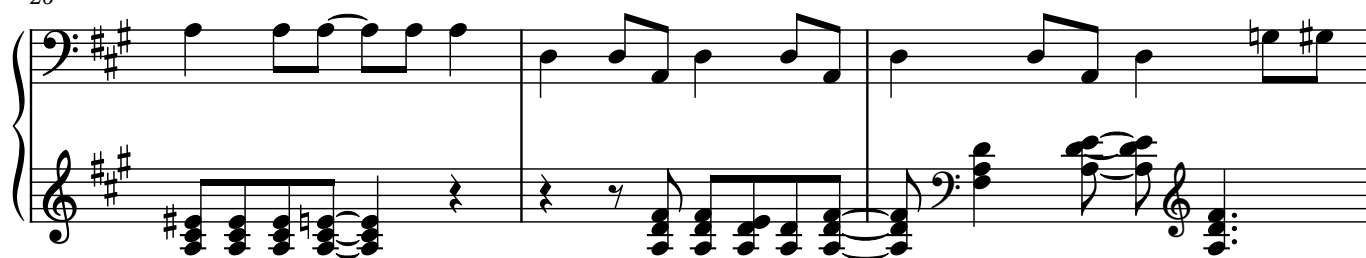
10

14

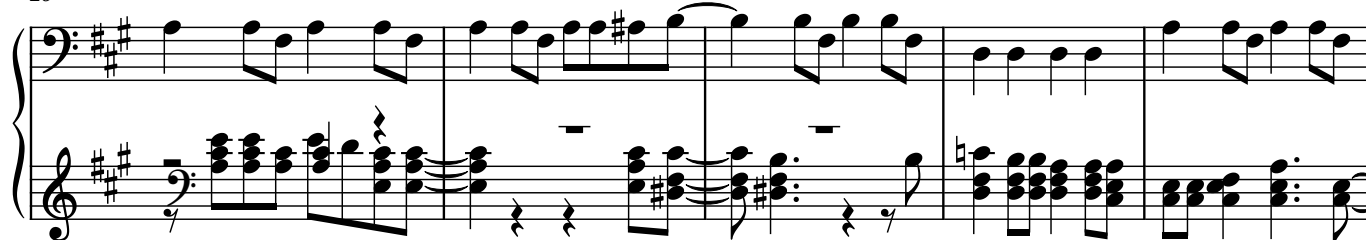
18

22

26



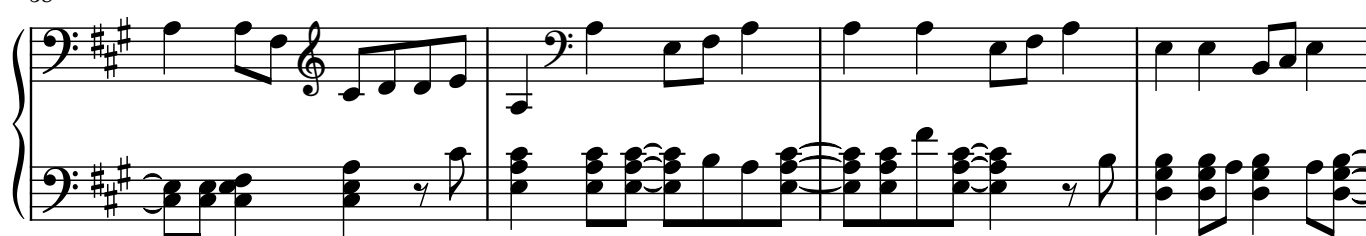
29



34



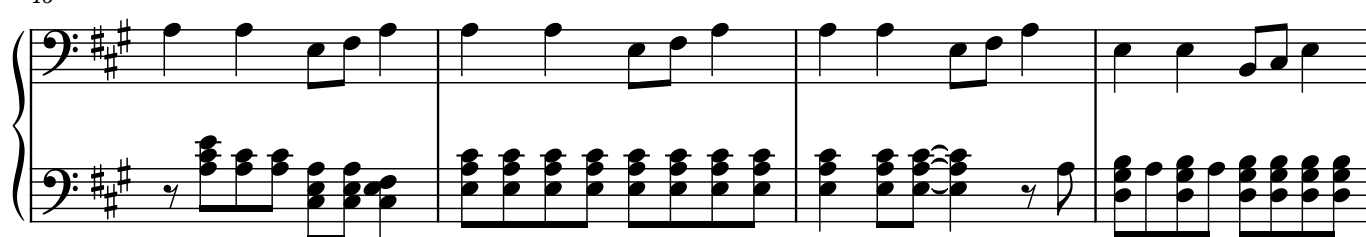
38



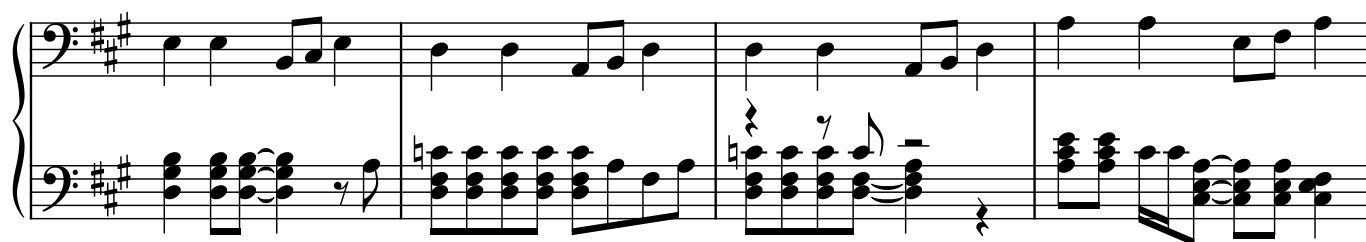
42



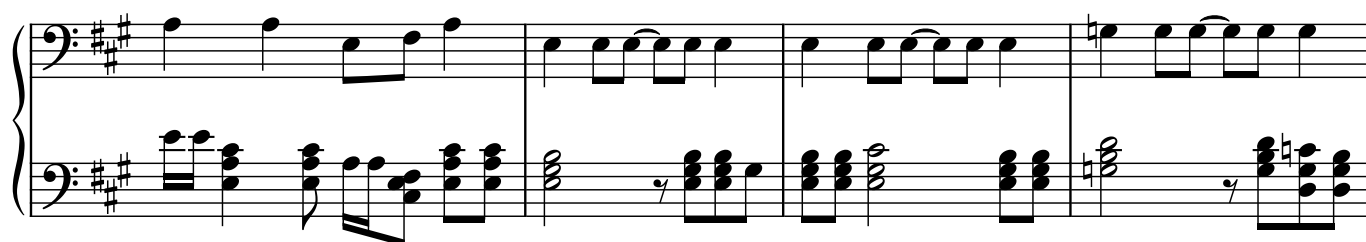
46



50



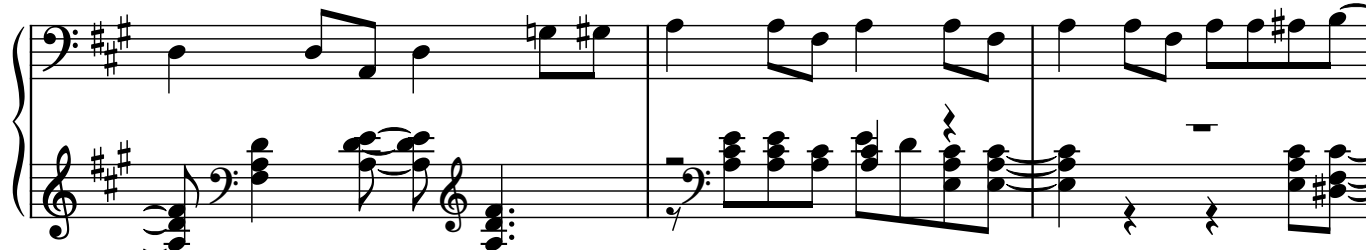
54



58



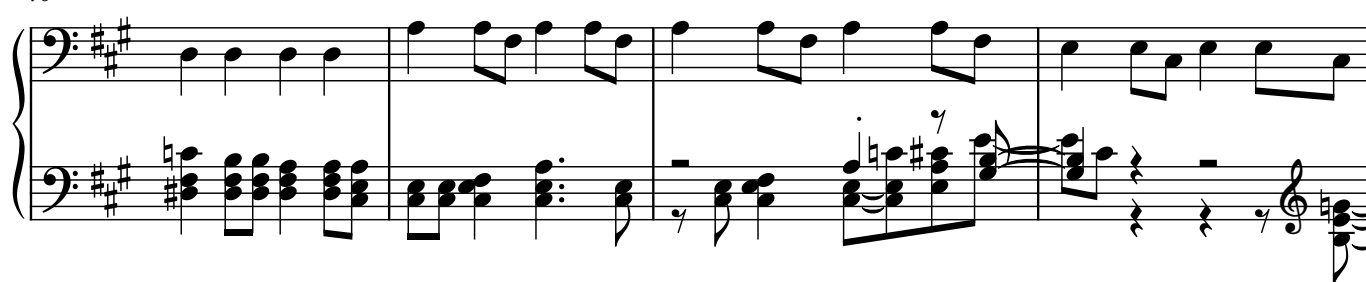
62



65



70



Measures 74-77 of a musical score in D major (two sharps). The bass staff features a steady eighth-note melody. The treble staff contains complex chords and arpeggiated figures, including a prominent triplet of eighth notes in measure 75.

Measures 78-81. The bass staff continues its eighth-note pattern. The treble staff shows a series of chords in measures 78 and 79, followed by a more active line in measure 80, and a final chord in measure 81.

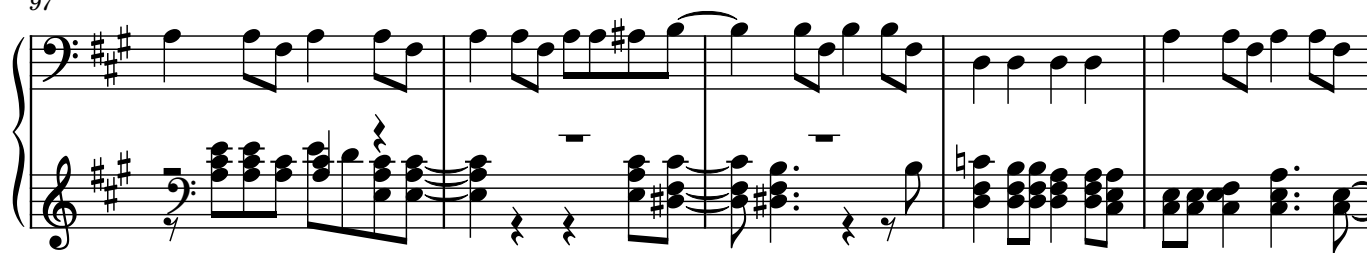
Measures 82-85. The bass staff maintains the eighth-note melody. The treble staff consists of sustained chords in measures 82 and 83, with a more active line in measure 84, and a final chord in measure 85.

Measures 86-89. The bass staff continues the eighth-note pattern. The treble staff features a series of chords in measures 86 and 87, followed by a more active line in measure 88, and a final chord in measure 89.

Measures 90-93. The bass staff continues the eighth-note pattern. The treble staff features a series of chords in measures 90 and 91, followed by a more active line in measure 92, and a final chord in measure 93.

Measures 94-97. The bass staff continues the eighth-note pattern. The treble staff features a series of chords in measures 94 and 95, followed by a more active line in measure 96, and a final chord in measure 97.

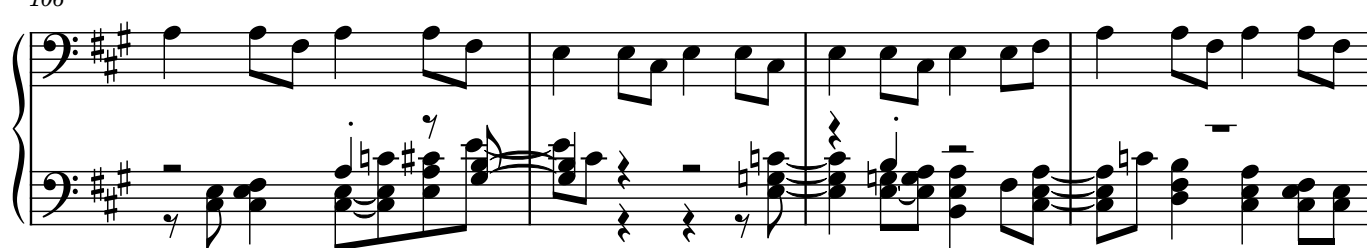
97



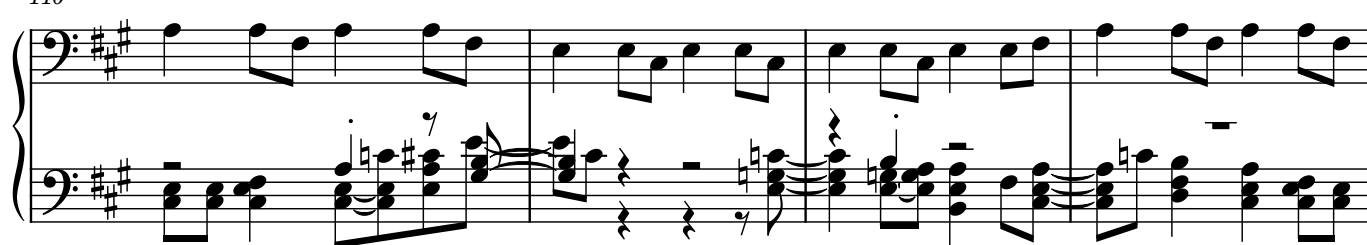
102



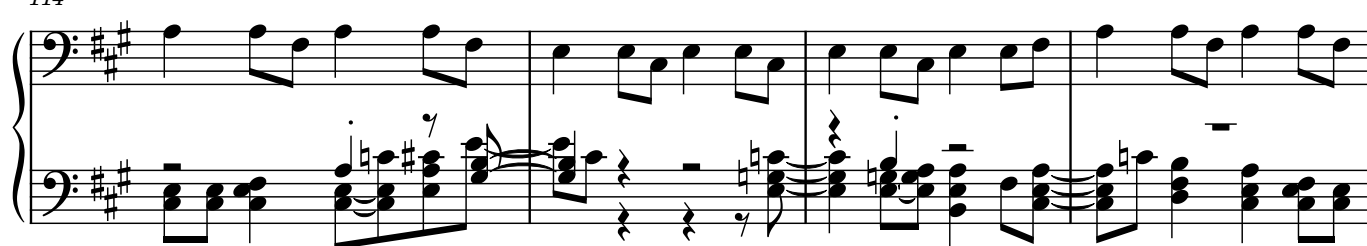
106



110



114



118

