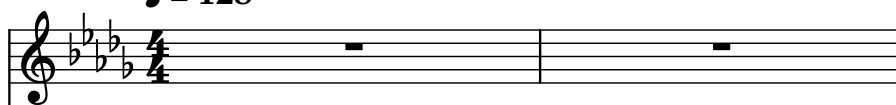
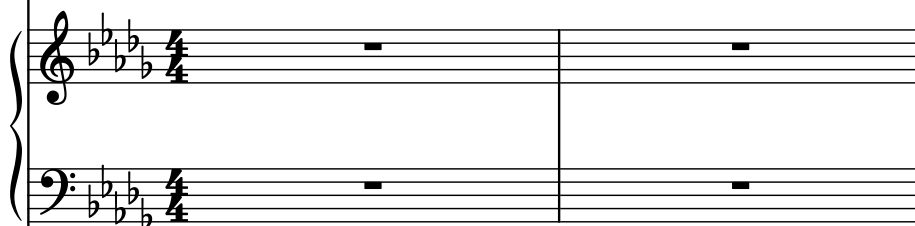


♩ = 128

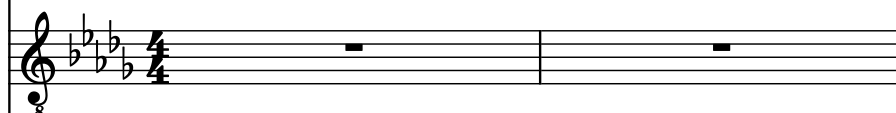
Pad Synthesizer, MIDI out #10



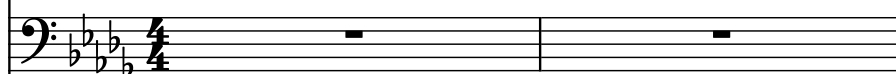
Organ, MIDI out



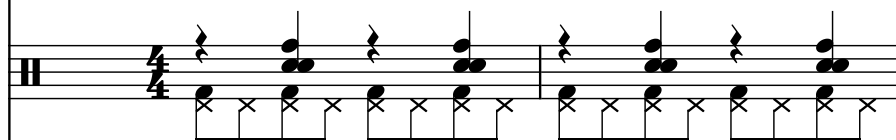
Electric Guitar, MIDI out #7



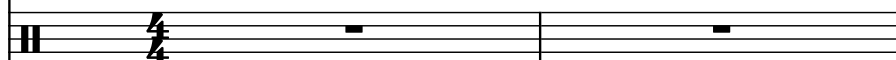
Fretless Electric Bass, MIDI out #9



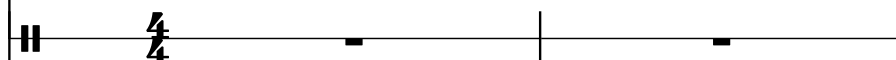
Drumset, MIDI out #2



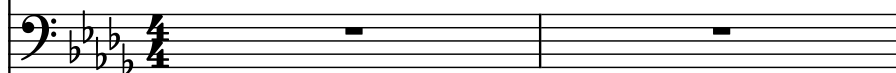
Drumset, MIDI out #3



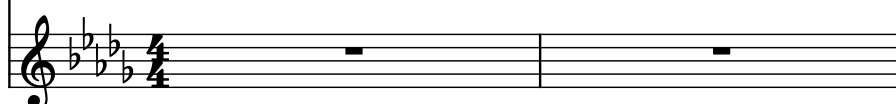
Concert Snare Drum, MIDI out #4



Bass Synthesizer, MIDI out #5



Violins, MIDI out #8



3

Synth.

Org.

El. Guit.

Frtl. El. B.

D. Set

D. Set

Con. Sn.

Synth.

Vlns.

The musical score for page 2, measures 3-5, is as follows:

- Synth. (top):** Treble clef, four flats key signature. Measures 3-5 contain whole rests.
- Org.:** Grand staff (treble and bass clefs), four flats key signature. Measures 3-5 contain whole rests.
- El. Guit.:** Treble clef, four flats key signature. Measures 3-5 contain whole rests.
- Frtl. El. B.:** Bass clef, four flats key signature. Measures 3-5 contain whole rests.
- D. Set (first):** Percussion staff. Measures 3-5 contain a complex rhythmic pattern: eighth notes with accents, followed by eighth notes with 'x' marks, and then quarter notes with 'x' marks.
- D. Set (second):** Percussion staff. Measures 3-5 contain whole rests.
- Con. Sn.:** Percussion staff. Measures 3-5 contain whole rests.
- Synth. (bottom):** Bass clef, four flats key signature. Measures 3-5 contain whole rests.
- Vlns.:** Treble clef, four flats key signature. Measures 3-5 contain whole rests.

6

Synth.

Org.

El. Guit.

Frtl. El. B.

D. Set

D. Set

Con. Sn.

Synth.

Vlns.

The musical score for page 3, measure 6, features the following parts and notation:

- Synth.:** Treble clef, four flats key signature, whole rest.
- Org.:** Grand staff (treble and bass clefs), four flats key signature, whole rests.
- El. Guit.:** Treble clef, four flats key signature, whole rest.
- Frtl. El. B.:** Bass clef, four flats key signature, whole rest.
- D. Set (first):** Two staves. The top staff has a whole rest. The bottom staff has a series of eighth notes with 'x' marks, indicating a specific drum pattern.
- D. Set (second):** Two staves. The top staff has a whole rest. The bottom staff has a whole rest followed by a quarter rest.
- Con. Sn.:** Two staves. The top staff has a whole rest. The bottom staff has a whole rest followed by a quarter rest and a dotted half note.
- Synth.:** Bass clef, four flats key signature, whole rest.
- Vlns.:** Treble clef, four flats key signature, whole rest.

9

Synth.

Org.

El. Guit.

Frtl. El. B.

D. Set

D. Set

Con. Sn.

Synth.

Vlins.

12

Synth.

Org.

El. Guit.

Frtl. El. B.

D. Set

D. Set

Con. Sn.

Synth.

Vlns.

15

Synth.

Org.

El. Guit.

Frtl. El. B.

D. Set

D. Set

Con. Sn.

Synth.

Vlns.

19

Synth.

Org.

El. Guit.

Frtl. El. B.

D. Set

D. Set

Con. Sn.

Synth.

Vlns.

The musical score for page 19 is written for a multi-instrument ensemble. The key signature consists of three flats (B-flat, E-flat, A-flat), and the time signature is 4/4. The instruments and their parts are as follows:

- Synth. (top):** Features whole rests in all measures.
- Org. (Organ):** The right hand plays complex chords and melodic lines, while the left hand plays a steady bass line with eighth and sixteenth notes.
- El. Guit. (Electric Guitar):** The right hand plays a series of chords and single notes, while the left hand plays a bass line with eighth and sixteenth notes.
- Frtl. El. B. (Fretless Electric Bass):** The right hand plays a series of chords and single notes, while the left hand plays a bass line with eighth and sixteenth notes.
- D. Set (Drum Set):** The top staff shows a pattern of hits marked with 'x' symbols. The bottom staff shows a pattern of hits marked with 'x' symbols.
- Con. Sn. (Conga Snare):** Features a single hit in the final measure.
- Synth. (bottom):** Features whole rests in all measures.
- Vlns. (Violins):** Features whole rests in all measures.

25

Synth.

Org.

El. Guit.

Frtl. El. B.

D. Set

D. Set

Con. Sn.

Synth.

Vlns.

The musical score for measures 25-27 is written for a multi-instrument ensemble. The key signature is B-flat major (two flats). The instruments are Synth., Org., El. Guit., Frtl. El. B., two D. Set parts, Con. Sn., and Vlns. The score is organized into three measures. Measure 25 shows Synth. and Vlns. with rests, Org. with a sustained chord, El. Guit. with a sustained chord, Frtl. El. B. with a sustained chord, and the first D. Set with a complex rhythmic pattern. Measure 26 shows Synth. and Vlns. with rests, Org. with a sustained chord, El. Guit. with a sustained chord, Frtl. El. B. with a sustained chord, the first D. Set with a complex rhythmic pattern, and the second D. Set with a single note. Measure 27 shows Synth. and Vlns. with rests, Org. with a sustained chord, El. Guit. with a sustained chord, Frtl. El. B. with a sustained chord, the first D. Set with a complex rhythmic pattern, and the second D. Set with a single note.



28

Synth.

Org.

El. Guit.

Frtl. El. B.

D. Set

D. Set

Con. Sn.

Synth.

Vlins.

31

Synth.

Org.

El. Guit.

Frtl. El. B.

D. Set

D. Set

Con. Sn.

Synth.

Vlins.

34

Synth.

Org.

El. Guit.

Frtl. El. B.

D. Set

D. Set

Con. Sn.

Synth.

Vlins.

37

Synth.

Org.

El. Guit.

Frtl. El. B.

D. Set

D. Set

Con. Sn.

Synth.

Vlins.

40

The musical score for measures 40-42 is written for a multi-instrument ensemble. The key signature has four flats (B-flat, E-flat, A-flat, D-flat), and the time signature is 4/4. The instruments and their parts are as follows:

- Synth. (top):** Treble clef. Measures 40-42 contain whole rests.
- Org.:** Grand staff (treble and bass clefs). Measure 40 has whole rests. Measure 41 has a whole chord in the treble and a whole note in the bass. Measure 42 has a half note in the treble and a half note in the bass, both with triplets.
- El. Guit.:** Treble clef. Measure 40 has a whole rest. Measure 41 has a whole chord. Measure 42 has a half note with a triplet, followed by a quarter note with a triplet.
- Frtl. El. B.:** Bass clef. Measure 40 has a whole rest. Measure 41 has a whole note. Measure 42 has a half note with a triplet, followed by a quarter note with a triplet.
- D. Set (first):** Two staves. Measure 40 has eighth notes with accents. Measure 41 has eighth notes with accents. Measure 42 has eighth notes with accents.
- D. Set (second):** Two staves. Measures 40-42 contain whole rests.
- Con. Sn.:** Two staves. Measures 40-42 contain whole rests.
- Synth. (bottom):** Bass clef. Measure 40 has a half note with a triplet, followed by a quarter note with a triplet. Measures 41-42 contain whole rests.
- Vlins.:** Treble clef. Measures 40-42 contain whole rests.

43

Synth.

Org.

El. Guit.

Frtrl. El. B.

D. Set

D. Set

Con. Sn.

Synth.

Vlns.

46

Synth.

Org.

El. Guit.

Frtl. El. B.

D. Set

D. Set

Con. Sn.

Synth.

Vlins.

49

Synth.

Org.

El. Guit.

Frtl. El. B.

D. Set

D. Set

Con. Sn.

Synth.

Vlins.



52

Synth.

Org.

El. Guit.

Frtl. El. B.

D. Set

D. Set

Con. Sn.

Synth.

Vlins.

55

Synth.

Org.

El. Guit.

Frtl. El. B.

D. Set

D. Set

Con. Sn.

Synth.

Vlins.

59

Synth.

Org.

El. Guit.

Frtl. El. B.

D. Set

D. Set

Con. Sn.

Synth.

Vlns.

The musical score for page 19, starting at measure 59, is arranged in nine staves. The key signature is B-flat major (two flats). The Synth. part at the top has a simple pattern of eighth notes. The Org. part has a complex texture with many beamed notes and ties. The El. Guit. part has a similar complex texture with many beamed notes and ties. The Frtl. El. B. part has a simpler texture with fewer notes. The D. Set parts have a rhythmic pattern of eighth notes. The Con. Sn. part has a simple pattern of eighth notes. The Synth. part at the bottom has a simple pattern of eighth notes. The Vlns. part at the bottom has a simple pattern of eighth notes.

65

Synth.

Org.

El. Guit.

Frtl. El. B.

D. Set

D. Set

Con. Sn.

Synth.

Vlns.

68

Synth.

Org.

El. Guit.

Frtl. El. B.

D. Set

D. Set

Con. Sn.

Synth.

Vlns.

71

Synth.

Org.

El. Guit.

Frtl. El. B.

D. Set

D. Set

Con. Sn.

Synth.

Vlns.

74

Synth.

Org.

El. Guit.

Frtl. El. B.

D. Set

D. Set

Con. Sn.

Synth.

Vlns.

77

Synth.

Org.

El. Guit.

Frtl. El. B.

D. Set

D. Set

Con. Sn.

Synth.

Vlns.

The musical score for measures 77-79 is written for a multi-instrument ensemble. The key signature is three flats (B-flat, E-flat, A-flat). Measure 77 begins with a synth lead in the treble clef, playing eighth notes. The organ and electric guitar play chords in the treble clef, while the fretless electric bass plays a line in the bass clef. Measure 78 continues the synth lead and organ/guitar chords. Measure 79 features a sustained synth lead, organ and guitar chords, and a fretless electric bass line. The percussion parts (D. Set, Con. Sn.) are marked with rests throughout the measures.



80

Synth.

Org.

El. Guit.

Frtl. El. B.

D. Set

D. Set

Con. Sn.

Synth.

Vlns.

83

Synth.

Org.

El. Guit.

Frtl. El. B.

D. Set

D. Set

Con. Sn.

Synth.

Vlins.

86

Synth.

Org.

El. Guit.

Frtl. El. B.

D. Set

D. Set

Con. Sn.

Synth.

Vlins.

89

Synth.

Org.

El. Guit.

Frtl. El. B.

D. Set

D. Set

Con. Sn.

Synth.

Vlins.

92

Synth.

Org.

El. Guit.

Frtl. El. B.

D. Set

D. Set

Con. Sn.

Synth.

Vlins.

95

This musical score page contains measures 95, 96, and 97. The instruments and their parts are as follows:

- Synth. (top):** Treble clef, key of B-flat major. Measures 95-97 contain whole rests.
- Org.:** Grand staff (treble and bass clefs). Measure 95 has a whole rest in the treble and a half note G2 in the bass. Measure 96 has whole rests in both staves. Measure 97 has a whole note chord (F3, A3, C4, E4) in the treble and a whole note G2 in the bass.
- El. Guit.:** Treble clef, key of B-flat major. Measure 95 has a whole rest. Measure 96 has a whole rest. Measure 97 has a whole note chord (F3, A3, C4, E4).
- Frtl. El. B.:** Bass clef, key of B-flat major. Measure 95 has a whole rest. Measure 96 has a whole rest. Measure 97 has a whole note G2.
- D. Set (first):** Drum set notation. Measures 95-97 feature a consistent pattern of snare and hi-hat hits.
- D. Set (second):** Drum set notation. Measures 95-97 contain whole rests.
- Con. Sn.:** Conga notation. Measures 95-97 contain whole rests.
- Synth. (bottom):** Bass clef, key of B-flat major. Measure 95 has a whole rest. Measure 96 has a half note G1. Measure 97 has a whole rest.
- Vlns.:** Treble clef, key of B-flat major. Measures 95-97 contain whole rests.

98

Synth.

Org.

El. Guit.

Frtl. El. B.

D. Set

D. Set

Con. Sn.

Synth.

Vlins.

101

Synth.

Org.

El. Guit.

Frtl. El. B.

D. Set

D. Set

Con. Sn.

Synth.

Vlins.



104

Synth.

Org.

El. Guit.

Frtl. El. B.

D. Set

D. Set

Con. Sn.

Synth.

Vlns.

This musical score page contains measures 104 through 107. The instruments and their parts are as follows:

- Synth. (top):** Treble clef, key of B-flat major. Measure 104 has a whole rest. Measure 105 has a descending eighth-note scale (F4, E4, D4, C4, B3, A3, G3). Measure 106 has a dotted quarter note (F4), an eighth note (E4), a quarter note (D4), and a half note (C4). Measure 107 has a dotted quarter note (F4), an eighth note (E4), a quarter note (D4), and a half note (C4).
- Org. (middle):** Grand staff. Measure 104 has a whole rest in the treble and a half note (F3) in the bass. Measure 105 has a whole rest in the treble and a half note (F3) in the bass. Measure 106 has a dotted quarter note (F4) in the treble and a quarter note (F3) in the bass. Measure 107 has a dotted quarter note (F4) in the treble and a quarter note (F3) in the bass.
- El. Guit. (middle):** Treble clef, key of B-flat major. Measure 104 has a whole rest. Measure 105 has a whole rest. Measure 106 has a dotted quarter note (F4), an eighth note (E4), a quarter note (D4), and a half note (C4). Measure 107 has a dotted quarter note (F4), an eighth note (E4), a quarter note (D4), and a half note (C4).
- Frtl. El. B. (middle):** Bass clef, key of B-flat major. Measure 104 has a whole rest. Measure 105 has a whole rest. Measure 106 has a dotted quarter note (F3), an eighth note (E3), a quarter note (D3), and a half note (C3). Measure 107 has a dotted quarter note (F3), an eighth note (E3), a quarter note (D3), and a half note (C3).
- D. Set (bottom):** Two staves. The top staff has a whole rest in measure 104, followed by a whole rest in measures 105-107. The bottom staff has a whole rest in measure 104, followed by a whole rest in measures 105-107.
- Con. Sn. (bottom):** Bass clef, key of B-flat major. Measure 104 has a whole rest. Measure 105 has a whole rest. Measure 106 has a dotted quarter note (F3), an eighth note (E3), a quarter note (D3), and a half note (C3). Measure 107 has a dotted quarter note (F3), an eighth note (E3), a quarter note (D3), and a half note (C3).
- Synth. (bottom):** Bass clef, key of B-flat major. Measure 104 has a whole rest. Measure 105 has a whole rest. Measure 106 has a dotted quarter note (F3), an eighth note (E3), a quarter note (D3), and a half note (C3). Measure 107 has a dotted quarter note (F3), an eighth note (E3), a quarter note (D3), and a half note (C3).
- Vlns. (bottom):** Treble clef, key of B-flat major. Measure 104 has a whole rest. Measure 105 has a whole rest. Measure 106 has a dotted quarter note (F4), an eighth note (E4), a quarter note (D4), and a half note (C4). Measure 107 has a dotted quarter note (F4), an eighth note (E4), a quarter note (D4), and a half note (C4).

108

Synth.

Org.

El. Guit.

Frtl. El. B.

D. Set

D. Set

Con. Sn.

Synth.

Vlns.

The musical score for measures 108-112 is written for a multi-instrument ensemble. The key signature is B-flat major (three flats). The score includes parts for Synth., Org., El. Guit., Frtl. El. B., D. Set (two staves), Con. Sn., Synth., and Vlns. Measure 108 starts with a synth lead in the treble and a bass line in the bass. The organ and electric guitar play chords. The first drum set has a steady quarter-note pattern. The second drum set has a pattern of four eighth notes followed by a quarter note. The conga snare has a single note in measure 112. The synth and violin parts are silent throughout the measures.

113

Synth.

Org.

El. Guit.

Frtl. El. B.

D. Set

D. Set

Con. Sn.

Synth.

Vlms.

116

Synth.

Org.

El. Guit.

Frtl. El. B.

D. Set

D. Set

Con. Sn.

Synth.

Vlns.

119

Synth.

Org.

El. Guit.

Frtl. El. B.

D. Set

D. Set

Con. Sn.

Synth.

Vlns.

122

Synth.

Org.

El. Guit.

Frtl. El. B.

D. Set

D. Set

Con. Sn.

Synth.

Vlins.

125

Synth.

Org.

El. Guit.

Frtl. El. B.

D. Set

D. Set

Con. Sn.

Synth.

Vlins.

128

Synth.

Org.

El. Guit.

Frtl. El. B.

D. Set

D. Set

Con. Sn.

Synth.

Vlins.



131

Synth.

Org.

El. Guit.

Frtl. El. B.

D. Set

D. Set

Con. Sn.

Synth.

Vlns.

134

Synth.

Org.

El. Guit.

Frtl. El. B.

D. Set

D. Set

Con. Sn.

Synth.

Vlns.

The musical score for measures 134-136 is written for a multi-instrument ensemble. The key signature is B-flat major (three flats). The score includes parts for Synth., Org., El. Guit., Frtl. El. B., D. Set, Con. Sn., and Vlns. The Org. and El. Guit. parts feature complex chordal textures with many tied notes across the three measures. The Frtl. El. B. part has a similar texture. The D. Set parts show a rhythmic pattern of eighth notes with 'x' marks. The Con. Sn. part has a simple pattern of eighth notes. The Synth. and Vlns. parts are mostly silent, indicated by rests.

137

Synth.

Org.

El. Guit.

Frtl. El. B.

D. Set

D. Set

Con. Sn.

Synth.

Vlns.

The musical score for page 43, starting at measure 137, is arranged for the following instruments:

- Synth.**: Features a melodic line in the treble clef, starting with a series of eighth notes and quarter notes.
- Org.**: Features block chords in the treble clef and a bass line in the bass clef.
- El. Guit.**: Features block chords in the treble clef and a bass line in the bass clef.
- Frtl. El. B.**: Features a bass line in the bass clef with eighth notes.
- D. Set**: Features a drum pattern in the treble clef with eighth notes and rests.
- D. Set**: Features a drum pattern in the treble clef with eighth notes and rests.
- Con. Sn.**: Features a simple drum pattern in the treble clef.
- Synth.**: Features a bass line in the bass clef with rests.
- Vlns.**: Features a treble clef with rests.

140

Synth.

Org.

El. Guit.

Frtl. El. B.

D. Set

D. Set

Con. Sn.

Synth.

Vlns.

141

142

143

Synth.

Org.

El. Guit.

Frtl. El. B.

D. Set

D. Set

Con. Sn.

Synth.

Vlns.

146

Synth.

Org.

El. Guit.

Frtl. El. B.

D. Set

D. Set

Con. Sn.

Synth.

Vlns.

The musical score for measures 146-148 is written for a multi-instrument ensemble. The key signature is three flats (B-flat, E-flat, A-flat). Measure 146 features a Synth. part with a melodic line, and the Org., El. Guit., and Frtl. El. B. parts with sustained chords. Measure 147 shows the D. Set parts with a rhythmic pattern of eighth notes and rests. Measure 148 shows the Vlns. part with a melodic line. The Synth. part in measure 148 has a whole note chord.

149

Synth.

Org.

El. Guit.

Frtl. El. B.

D. Set

D. Set

Con. Sn.

Synth.

Vlins.

152

Synth.

Org.

El. Guit.

Frtl. El. B.

D. Set

D. Set

Con. Sn.

Synth.

Vlns.



155

Synth.

Org.

El. Guit.

Frtl. El. B.

D. Set

D. Set

Con. Sn.

Synth.

Vlns.

158

Synth.

Org.

El. Guit.

Frtrl. El. B.

D. Set

D. Set

Con. Sn.

Synth.

Vlns.

161

Synth.

Org.

El. Guit.

Frtl. El. B.

D. Set

D. Set

Con. Sn.

Synth.

Vlins.

164

Synth.

Org.

El. Guit.

Frtl. El. B.

D. Set

D. Set

Con. Sn.

Synth.

Vlns.

The musical score for measures 164-166 is written for a multi-instrument ensemble. The key signature is B-flat major (two flats). The score includes parts for Synth., Org., El. Guit., Frtl. El. B., D. Set, Con. Sn., and Vlns. The Org. and El. Guit. parts feature complex chordal textures and melodic lines. The D. Set parts show a rhythmic pattern of eighth notes with 'x' marks. The Synth. and Vlns. parts are mostly silent, indicated by a horizontal line with a dash. The Con. Sn. part shows a single hit in measure 165.

167

Synth.

Org.

El. Guit.

Frtl. El. B.

D. Set

D. Set

Con. Sn.

Synth.

Vlins.

170

Synth.

Org.

El. Guit.

Frtl. El. B.

D. Set

D. Set

Con. Sn.

Synth.

Vlns.

173

Synth.

Org.

El. Guit.

Frtl. El. B.

D. Set

D. Set

Con. Sn.

Synth.

Vlins.

176

Synth.

Org.

El. Guit.

Frtl. El. B.

D. Set

D. Set

Con. Sn.

Synth.

Vlins.

Detailed description: This page contains a musical score for measures 176 through 179. The score is arranged in a multi-staff format. The top staff is for Synth. (Synthesizer) in treble clef, which remains silent throughout. The second staff is for Org. (Organ) in treble and bass clefs, featuring complex chordal textures and melodic lines. The third staff is for El. Guit. (Electric Guitar) in treble clef, with a '8' indicating an octave shift, playing sustained chords. The fourth staff is for Frtl. El. B. (Fretless Electric Bass) in bass clef, providing a melodic bass line. The fifth staff is for D. Set (Drum Set) in a simplified notation, showing a consistent rhythmic pattern of eighth notes. The sixth staff is another D. Set staff, which is silent. The seventh staff is for Con. Sn. (Conga Snare) in a simplified notation, showing a consistent rhythmic pattern. The eighth staff is for Synth. (Synthesizer) in bass clef, which remains silent. The bottom staff is for Vlins. (Violins) in treble clef, which remains silent. The key signature is B-flat major (two flats), and the time signature is 4/4.



180

Synth.

Org.

El. Guit.

Frtl. El. B.

D. Set

D. Set

Con. Sn.

Synth.

Vlins.

185

Synth.

Org.

El. Guit.

Frtl. El. B.

D. Set

D. Set

Con. Sn.

Synth.

Vlns.

The musical score for measures 185-189 is as follows:

- Measures 185-188:**
  - Synth., Org., El. Guit., Frtl. El. B., and Vlns.:** Silent (whole rests).
  - First D. Set:** Plays a complex pattern of eighth and sixteenth notes, primarily on the G and A strings, with occasional accents on the D and E strings.
  - Second D. Set:** Silent.
  - Con. Sn.:** Silent.
- Measure 189:**
  - All instruments:** Play a whole note chord consisting of G4, A4, Bb4, and C5.

190

Synth.

Org.

El. Guit.

Frtl. El. B.

D. Set

D. Set

Con. Sn.

Synth.

Vlns.

The musical score for measures 190-195 is as follows:

- Synth.:** Treble clef, four flats key signature. Measures 190-195 contain whole rests.
- Org.:** Grand staff (treble and bass clefs), four flats key signature. Measures 190-195 contain whole rests.
- El. Guit.:** Treble clef, four flats key signature. Measures 190-195 contain whole rests.
- Frtl. El. B.:** Bass clef, four flats key signature. Measures 190-195 contain whole rests.
- D. Set (1):** Treble clef, four flats key signature. Measures 190-192 contain eighth-note chords (F, C, G, C). Measures 193-195 contain whole rests.
- D. Set (2):** Treble clef, four flats key signature. Measures 190-192 contain whole rests. Measure 193 contains a quarter rest. Measures 194-195 contain eighth-note patterns marked with 'x'.
- Con. Sn.:** Treble clef, four flats key signature. Measures 190-191 contain whole rests. Measure 192 contains a quarter rest followed by a dotted half note. Measures 193-195 contain whole rests.
- Synth. (2):** Bass clef, four flats key signature. Measures 190-195 contain whole rests.
- Vlns.:** Treble clef, four flats key signature. Measures 190-195 contain whole rests.

196

Synth.

Org.

El. Guit.

Frtl. El. B.

D. Set

D. Set

Con. Sn.

Synth.

Vlns.