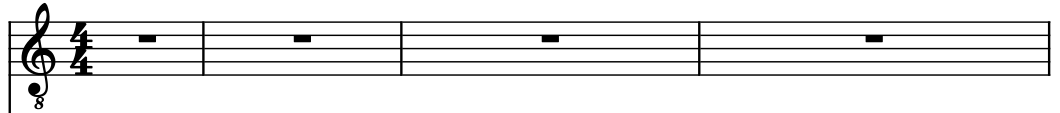


♩ = 107
♩ = 120

Electric Guitar, tk1



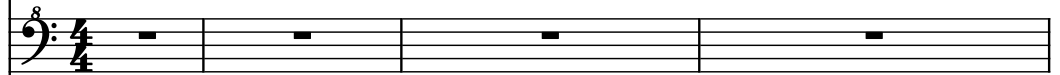
Steel Drums, tk2



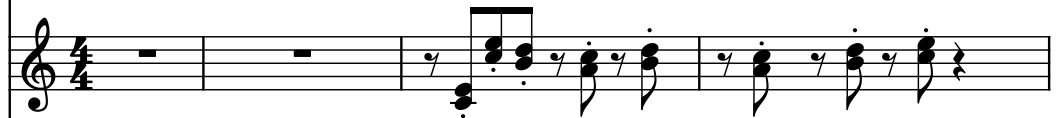
5-str. Electric Bass, tk3



Bass Recorder, tk4



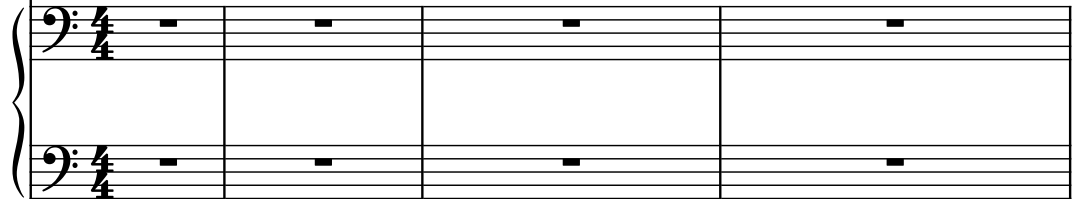
Effect Synthesizer, tk5



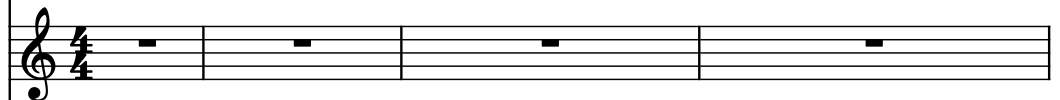
Percussive Organ, tk6



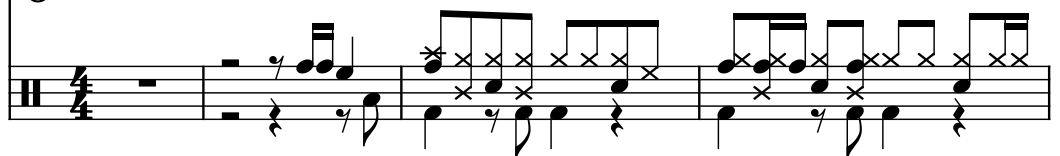
Honky Tonk Piano, tk7



Brass, tk8



Drumset, tk10



5

El. Guit.

St. Dr.

El. B.

B. Rec.

Synth.

Perc. Org.

Hnk. Pno.

Br.

D. Set

8

El. Guit.

St. Dr.

El. B.

B. Rec.

Synth.

Perc. Org.

Hnk. Pno.

Br.

D. Set

11

El. Guit.

St. Dr.

El. B.

B. Rec.

Synth.

Perc. Org.

Hnk. Pno.

Br.

D. Set

14

El. Guit.

St. Dr.

El. B.

B. Rec.

Synth.

Perc. Org.

Hnk. Pno.

Br.

D. Set

16

El. Guit.

St. Dr.

El. B.

B. Rec.

Synth.

Perc. Org.

Hnk. Pno.

Br.

D. Set

18

El. Guit.

St. Dr.

El. B.

B. Rec.

Synth.

Perc. Org.

Hnk. Pno.

Br.

D. Set

20

El. Guit.

St. Dr.

El. B.

B. Rec.

Synth.

Perc. Org.

Hnk. Pno.

Br.

D. Set

22

El. Guit.

St. Dr.

El. B.

B. Rec.

Synth.

Perc. Org.

Hnk. Pno.

Br.

D. Set

Detailed description: This musical score page contains measures 22 and 23. The instruments are arranged vertically: El. Guit., St. Dr., El. B., B. Rec., Synth., Perc. Org., Hnk. Pno., Br., and D. Set. Measures 22 and 23 are indicated by a '22' at the top left. El. Guit. has a whole rest in measure 22 and a dotted quarter note followed by an eighth rest in measure 23. St. Dr. has whole rests in both measures. El. B. has a quarter note, eighth rest, quarter note, quarter note, quarter note, eighth rest, quarter note, quarter note, quarter note, quarter note in measure 22, and a quarter note, eighth rest, quarter note, quarter note, quarter note, quarter note, quarter note, quarter note in measure 23. B. Rec. has a quarter note, eighth rest, quarter note, quarter note, quarter note, eighth rest, quarter note, quarter note, quarter note, quarter note in measure 22, and a quarter note, eighth rest, quarter note, quarter note, quarter note, eighth rest, quarter note, quarter note, quarter note, quarter note in measure 23. Synth. has whole rests in both measures. Perc. Org. has whole rests in both measures. Hnk. Pno. has a complex melodic line in measure 22 and a more active line in measure 23. Br. has whole rests in both measures. D. Set has a complex rhythmic pattern in measure 22 and a more active line in measure 23.

24

El. Guit.

St. Dr.

El. B.

B. Rec.

Synth.

Perc. Org.

Hnk. Pno.

Br.

D. Set

26

El. Guit.

St. Dr.

El. B.

B. Rec.

Synth.

Perc. Org.

Hnk. Pno.

Br.

D. Set

29

El. Guit.

St. Dr.

El. B.

B. Rec.

Synth.

Perc. Org.

Hnk. Pno.

Br.

D. Set

31

El. Guit.

St. Dr.

El. B.

B. Rec.

Synth.

Perc. Org.

Hnk. Pno.

Br.

D. Set

33

El. Guit.

St. Dr.

El. B.

B. Rec.

Synth.

Perc. Org.

Hnk. Pno.

Br.

D. Set

35

El. Guit.

St. Dr.

El. B.

B. Rec.

Synth.

Perc. Org.

Hnk. Pno.

Br.

D. Set

Detailed description: This musical score page contains measures 35 and 36. The instruments are arranged vertically: El. Guit., St. Dr., El. B., B. Rec., Synth., Perc. Org., Hnk. Pno. (with grand staff), Br., and D. Set. In measure 35, El. Guit. has a whole rest followed by a quarter note G4, an eighth note A4, and a quarter note G4 with a slash. St. Dr. has a whole rest. El. B. has a half note G2, an eighth note A2, a quarter note G2, an eighth note F2, and a quarter note E2. B. Rec. has a half note G2, an eighth note A2, a quarter note G2, an eighth note F2, and a quarter note E2. Synth. has a whole rest. Perc. Org. has a whole rest. Hnk. Pno. has a complex melodic line in the right hand and a bass line in the left hand. Br. has a whole rest. D. Set has a half note G2, an eighth note A2, a quarter note G2, an eighth note F2, and a quarter note E2. In measure 36, El. Guit. has a whole rest. St. Dr. has a whole rest. El. B. has a half note G2, an eighth note A2, a quarter note G2, an eighth note F2, and a quarter note E2. B. Rec. has a half note G2, an eighth note A2, a quarter note G2, an eighth note F2, and a quarter note E2. Synth. has a whole rest. Perc. Org. has a whole rest. Hnk. Pno. has a complex melodic line in the right hand and a bass line in the left hand. Br. has a whole rest. D. Set has a half note G2, an eighth note A2, a quarter note G2, an eighth note F2, and a quarter note E2.

37

El. Guit.

St. Dr.

El. B.

B. Rec.

Synth.

Perc. Org.

Hnk. Pno.

Br.

D. Set

Detailed description: This musical score page contains measures 37 and 38. The instruments and their parts are as follows:
- **El. Guit.**: Treble clef, measure 37 has a whole rest, measure 38 has a dotted quarter note followed by an eighth note.
- **St. Dr.**: Treble clef, measure 37 has a whole rest, measure 38 has a whole rest.
- **El. B.**: Bass clef, measure 37 has a dotted quarter note, eighth note, quarter note, and eighth note. Measure 38 has a dotted quarter note, eighth note, quarter note, and eighth note.
- **B. Rec.**: Bass clef, measure 37 has a quarter rest, eighth note, eighth note, quarter note, and eighth note. Measure 38 has a dotted quarter note, eighth note, quarter note, and eighth note.
- **Synth.**: Treble clef, measure 37 has a whole rest, measure 38 has a whole rest.
- **Perc. Org.**: Treble clef, measure 37 has a whole rest, measure 38 has a whole rest.
- **Hnk. Pno.**: Grand staff, measure 37 has a complex melodic line in the right hand and a bass line in the left hand. Measure 38 continues the melodic line in the right hand and has a bass line in the left hand.
- **Br.**: Treble clef, measure 37 has a whole rest, measure 38 has a whole rest.
- **D. Set**: Treble clef, measure 37 has a series of eighth notes with 'x' marks above them. Measure 38 has a series of eighth notes with 'x' marks above them.

39

El. Guit.

St. Dr.

El. B.

B. Rec.

Synth.

Perc. Org.

Hnk. Pno.

Br.

D. Set

41

El. Guit.

St. Dr.

El. B.

B. Rec.

Synth.

Perc. Org.

Hnk. Pno.

Br.

D. Set

44

El. Guit.

St. Dr.

El. B.

B. Rec.

Synth.

Perc. Org.

Hnk. Pno.

Br.

D. Set

47

El. Guit.

St. Dr.

El. B.

B. Rec.

Synth.

Perc. Org.

Hnk. Pno.

Br.

D. Set

Detailed description: This musical score page contains measures 47 and 48 for a multi-instrument ensemble. The instruments are arranged vertically: El. Guit., St. Dr., El. B., B. Rec., Synth., Perc. Org., Hnk. Pno. (grand staff), Br., and D. Set. Measure 47 shows El. Guit. and St. Dr. with whole rests, while El. B., Synth., Perc. Org., and B. Rec. play chords. Measure 48 features more complex rhythmic patterns for El. B., B. Rec., Hnk. Pno., and D. Set, with El. Guit., St. Dr., and Br. remaining at rest.

49

El. Guit.

St. Dr.

El. B.

B. Rec.

Synth.

Perc. Org.

Hnk. Pno.

Br.

D. Set

51

El. Guit.

St. Dr.

El. B.

B. Rec.

Synth.

Perc. Org.

Hnk. Pno.

Br.

D. Set

Detailed description: This musical score page contains measures 51 and 52. The instruments are arranged vertically: El. Guit., St. Dr., El. B., B. Rec., Synth., Perc. Org., Hnk. Pno., Br., and D. Set. Measures 51 and 52 are indicated by a '51' at the top left. El. Guit. and St. Dr. have whole rests in both measures. El. B. and B. Rec. play a melodic line starting on a half note in measure 51, moving to a quarter note in measure 52. Synth. has whole rests. Perc. Org. has a melodic line with a triplet in measure 52. Hnk. Pno. has a complex melodic line in measure 51 and a sustained chord in measure 52. Br. has whole rests. D. Set has a rhythmic pattern of eighth notes and rests in both measures.

53

El. Guit.

St. Dr.

El. B.

B. Rec.

Synth.

Perc. Org.

Hnk. Pno.

Br.

D. Set

55

El. Guit.

St. Dr.

El. B.

B. Rec.

Synth.

Perc. Org.

Hnk. Pno.

Br.

D. Set

Detailed description: This musical score page contains measures 55 through 58. The instruments are arranged vertically: El. Guit., St. Dr., El. B., B. Rec., Synth., Perc. Org., Hnk. Pno., Br., and D. Set. Measures 55 and 56 are mostly rests for the guitar, drums, and synth, while the electric bass and baritone saxophone play a steady eighth-note pattern. The percussion organ and double bass enter in measure 55 with a triplet of eighth notes. In measure 57, the guitar and drums join the eighth-note pattern. The percussion organ continues with a more complex eighth-note melody. The double bass plays a descending eighth-note line. In measure 58, the guitar and drums continue their patterns, while the percussion organ and double bass play chords. The double bass part includes a triplet of eighth notes in measure 55 and a triplet of eighth notes in measure 58.

56

El. Guit.

St. Dr.

El. B.

B. Rec.

Synth.

Perc. Org.

Hnk. Pno.

Br.

D. Set

3

58

El. Guit.

St. Dr.

El. B.

B. Rec.

Synth.

Perc. Org.

Hnk. Pno.

Br.

D. Set

60

El. Guit.

St. Dr.

El. B.

B. Rec.

Synth.

Perc. Org.

Hnk. Pno.

Br.

D. Set

62

El. Guit.

St. Dr.

El. B.

B. Rec.

Synth.

Perc. Org.

Hnk. Pno.

Br.

D. Set

Detailed description: This page contains a musical score for measures 62 and 63. The score is written for nine instruments: Electric Guitar, Snare Drum, Electric Bass, Baritone Saxophone, Synthesizer, Percussion Organ, Horns/Keyboard Piano, Brass, and Double Bass. Measures 62 and 63 are indicated at the top. The Electric Guitar, Snare Drum, and Synthesizer parts are mostly silent, with rests. The Electric Bass part has a rhythmic pattern of eighth and quarter notes. The Baritone Saxophone part has a melodic line with slurs. The Percussion Organ part has a long, sustained note with a crescendo line. The Horns/Keyboard Piano part has a complex rhythmic pattern with many beamed notes. The Brass part is silent. The Double Bass part has a rhythmic pattern with many beamed notes.

64

El. Guit.

St. Dr.

El. B.

B. Rec.

Synth.

Perc. Org.

Hnk. Pno.

Br.

D. Set

7

3

3

65

El. Guit.

St. Dr.

El. B.

B. Rec.

Synth.

Perc. Org.

Hnk. Pno.

Br.

D. Set

Detailed description: This page contains a musical score for measures 65 and 66. The score is written for nine instruments: Electric Guitar (El. Guit.), Studio Drums (St. Dr.), Electric Bass (El. B.), Baritone Saxophone (B. Rec.), Synthesizer (Synth.), Percussion Organ (Perc. Org.), Horn and Piano (Hnk. Pno.), Brass (Br.), and Drum Set (D. Set). Measure 65 begins with a key signature change to one flat (Bb) and a common time signature. The Electric Guitar and Baritone Saxophone play a melodic line starting on G4, moving to A4, Bb4, and C5. The Electric Bass and Percussion Organ play a rhythmic line starting on G2, moving to A2, Bb2, and C3. The Horn and Piano part features a complex melodic line in the right hand and a supporting bass line in the left hand. The Brass and Drum Set parts provide harmonic and rhythmic support. The score is written in standard musical notation with treble and bass clefs, and includes various musical symbols such as notes, rests, and accidentals.

67

El. Guit.

St. Dr.

El. B.

B. Rec.

Synth.

Perc. Org.

Hnk. Pno.

Br.

D. Set

Detailed description: This page contains a musical score for measures 67 and 68. The score is written for nine instruments: Electric Guitar (El. Guit.), Studio Drums (St. Dr.), Electric Bass (El. B.), Baritone Saxophone (B. Rec.), Synthesizer (Synth.), Percussion Organ (Perc. Org.), Horn and Piano (Hnk. Pno.), Brass (Br.), and Double Bass (D. Set). Measure 67 begins with a treble clef and a key signature of one sharp (F#). The Electric Guitar and Studio Drums have whole rests. The Electric Bass and Baritone Saxophone play a descending eighth-note line. The Synthesizer has a whole rest. The Percussion Organ plays a triplet of eighth notes (F#, G, A) followed by a quarter note (B). The Horn and Piano part consists of two staves; the upper staff has a whole rest, and the lower staff has a whole note chord (F, B, D). The Brass instrument has a whole rest. The Double Bass plays a rhythmic pattern of eighth and sixteenth notes. Measure 68 continues the patterns from measure 67, with the Electric Bass and Baritone Saxophone playing a descending eighth-note line, the Percussion Organ playing a triplet of eighth notes (B, C, D) followed by a quarter note (E), and the Double Bass playing a rhythmic pattern of eighth and sixteenth notes.

69

El. Guit.

St. Dr.

El. B.

B. Rec.

Synth.

Perc. Org.

Hnk. Pno.

Br.

D. Set

71

El. Guit.

St. Dr.

El. B.

B. Rec.

Synth.

Perc. Org.

Hnk. Pno.

Br.

D. Set

Detailed description: This page of a musical score contains measures 71 and 72. The score is for a multi-instrument ensemble. Measure 71 features a melodic line in the Electric Guitar (El. Guit.) and Bass (El. B.) parts, with a similar line in the Baritone Saxophone (B. Rec.). The Percussion Organ (Perc. Org.) plays a triplet of eighth notes. The Horns and Piano (Hnk. Pno.) section provides harmonic support with chords and moving lines. The Drums (D. Set) play a complex rhythmic pattern. Measure 72 continues the melodic themes, with the Electric Bass (El. B.) and Baritone Saxophone (B. Rec.) parts showing more development. The Percussion Organ (Perc. Org.) has a whole note chord. The Horns and Piano (Hnk. Pno.) section continues with sustained chords and moving lines. The Drums (D. Set) maintain their rhythmic pattern.

73

El. Guit.

St. Dr.

El. B.

B. Rec.

Synth.

Perc. Org.

Hnk. Pno.

Br.

D. Set

Detailed description: This page contains a musical score for measures 73 and 74. The score is written for nine instruments: Electric Guitar (El. Guit.), Snare Drum (St. Dr.), Electric Bass (El. B.), Baritone Saxophone (B. Rec.), Synthesizer (Synth.), Percussion Organ (Perc. Org.), Horn and Piano (Hnk. Pno.), Trumpet (Br.), and Double Bass (D. Set). Measure 73 begins with a treble clef and a key signature of one sharp (F#). The Electric Guitar part has an 8-measure rest. The Snare Drum part has a whole rest. The Electric Bass part plays a sequence of notes: G2, F#2, E2, D2, C2, B1, A1, G1. The Baritone Saxophone part plays a sequence of notes: G2, F#2, E2, D2, C2, B1, A1, G1. The Synthesizer part has a whole rest. The Percussion Organ part plays a sequence of notes: G2, F#2, E2, D2, C2, B1, A1, G1. The Horn and Piano part plays a sequence of notes: G2, F#2, E2, D2, C2, B1, A1, G1. The Trumpet part has a whole rest. The Double Bass part plays a sequence of notes: G2, F#2, E2, D2, C2, B1, A1, G1. Measure 74 continues the same patterns for all instruments.

75

El. Guit.

St. Dr.

El. B.

B. Rec.

Synth.

Perc. Org.

Hnk. Pno.

Br.

D. Set

Detailed description: This musical score page contains measures 75 through 78. The instruments and their parts are as follows: El. Guit. (Electric Guitar) in treble clef, measure 75 has a dotted quarter note on G4, measure 76 has a half note on A4, and measures 77-78 have a whole note on B4. St. Dr. (Steel Drums) in treble clef, measure 75 has a whole rest, and measures 76-78 have whole notes on G4, A4, and B4 respectively. El. B. (Electric Bass) in bass clef, measure 75 has a dotted quarter note on G2, measure 76 has a quarter note on A2, and measures 77-78 have a half note on B2. B. Rec. (Baritone Saxophone) in bass clef, measure 75 has a dotted quarter note on G2, measure 76 has a half note on A2, and measures 77-78 have a whole note on B2. Synth. (Synthesizer) in treble clef, measure 75 has a whole rest, and measures 76-78 have whole notes on G4, A4, and B4. Perc. Org. (Percussion Organ) in treble clef, measure 75 has a whole rest, and measures 76-78 have a complex melodic line with eighth and sixteenth notes. Hnk. Pno. (Honky-tonk Piano) in grand staff (treble and bass clefs), measure 75 has a whole note chord on G4 and A4 in the treble and a dotted quarter note on G2 in the bass, measure 76 has a whole note chord on A4 and B4 in the treble and a quarter note on A2 in the bass, and measures 77-78 have a whole note chord on B4 and C5 in the treble and a half note on B2 in the bass. Br. (Trumpet) in treble clef, measure 75 has a whole rest, and measures 76-78 have whole notes on G4, A4, and B4. D. Set (Drum Set) in bass clef, measure 75 has a quarter note on G2, measure 76 has a quarter note on A2, and measures 77-78 have a half note on B2.

76

El. Guit.

St. Dr.

El. B.

B. Rec.

Synth.

Perc. Org.

Hnk. Pno.

Br.

D. Set

Detailed description: This musical score page contains measures 76 through 79. The instruments are arranged in a vertical stack. El. Guit., St. Dr., B. Rec., Synth., and Br. have whole rests in all measures. El. B. plays a descending eighth-note line in measure 76, followed by a half-note in 77, and a descending eighth-note line in 78 and 79. Perc. Org. plays a chord in measure 76 and rests in the others. Hnk. Pno. has a complex melodic and harmonic line across all measures, with a key signature change to one flat in measure 78. D. Set plays a rhythmic pattern of eighth and sixteenth notes with 'x' marks above them, indicating specific articulation or effects.

77

El. Guit.

St. Dr.

El. B.

B. Rec.

Synth.

Perc. Org.

Hnk. Pno.

Br.

D. Set

79

El. Guit.

St. Dr.

El. B.

B. Rec.

Synth.

Perc. Org.

Hnk. Pno.

Br.

D. Set

81

El. Guit.

St. Dr.

El. B.

B. Rec.

Synth.

Perc. Org.

Hnk. Pno.

Br.

D. Set

83

El. Guit.

St. Dr.

El. B.

B. Rec.

Synth.

Perc. Org.

Hnk. Pno.

Br.

D. Set

85

El. Guit.

St. Dr.

El. B.

B. Rec.

Synth.

Perc. Org.

Hnk. Pno.

Br.

D. Set

Detailed description: This musical score page contains measures 85 and 86. The instruments are arranged vertically: El. Guit., St. Dr., El. B., B. Rec., Synth., Perc. Org., Hnk. Pno., Br., and D. Set. Measures 85 and 86 are indicated by a bracket above the first staff. El. Guit. and St. Dr. have whole rests in both measures. El. B. plays a rhythmic pattern of eighth and sixteenth notes. B. Rec. plays a melodic line with eighth notes and a half note. Synth. has whole rests. Perc. Org. has a whole rest in measure 85 and a melodic line in measure 86, including a five-measure rest. Hnk. Pno. has a complex melodic and harmonic part in both measures. Br. has whole rests. D. Set plays a complex rhythmic pattern with many 'x' marks indicating specific drum hits.

87

El. Guit.

St. Dr.

El. B.

B. Rec.

Synth.

Perc. Org.

Hnk. Pno.

Br.

D. Set

88

El. Guit.

St. Dr.

El. B.

B. Rec.

Synth.

Perc. Org.

Hnk. Pno.

Br.

D. Set

Detailed description: This musical score page contains measures 88 through 91. The instruments are arranged vertically: El. Guit. (Electric Guitar), St. Dr. (Steel Drums), El. B. (Electric Bass), B. Rec. (Baritone Saxophone), Synth. (Synthesizer), Perc. Org. (Percussion Organ), Hnk. Pno. (Honky-tonk Piano), Br. (Trumpet), and D. Set (Drum Set). Measure 88 features a half note G4 on El. Guit. and B. Rec., and a half note G2 on El. B. Measure 89 has a whole rest on St. Dr. and Synth., and a half note G2 on El. B. Measure 90 includes a complex Perc. Org. part with sixteenth notes and a triplet of eighth notes (F#4, G4, A4), a half note G4 on El. Guit. and B. Rec., and a half note G2 on El. B. Measure 91 continues with a half note G4 on El. Guit. and B. Rec., and a half note G2 on El. B. The Hnk. Pno. part consists of a series of chords and single notes across the measures.

89

El. Guit.

St. Dr.

El. B.

B. Rec.

Synth.

Perc. Org.

Hnk. Pno.

Br.

D. Set

91

El. Guit.

St. Dr.

El. B.

B. Rec.

Synth.

Perc. Org.

Hnk. Pno.

Br.

D. Set

Detailed description: This musical score page contains measures 91 and 92. The instruments are arranged vertically: El. Guit. (Electric Guitar), St. Dr. (Steel Drums), El. B. (Electric Bass), B. Rec. (Baritone Saxophone), Synth. (Synthesizer), Perc. Org. (Percussion Organ), Hnk. Pno. (Honky-tonk Piano), Br. (Trumpet), and D. Set (Drum Set). Measure 91 shows the El. Guit. and St. Dr. with whole rests, while the El. B. and B. Rec. play eighth-note patterns. The Synth. has a whole rest. The Perc. Org. plays a melodic line with a trill. The Hnk. Pno. has a complex accompaniment with many beamed sixteenth notes. The Br. has a whole rest. The D. Set plays a rhythmic pattern with 'x' marks for cymbals. Measure 92 continues these patterns, with the El. B. and B. Rec. playing a descending eighth-note line, the Perc. Org. playing a triplet, and the Hnk. Pno. playing a descending eighth-note line. The Br. has a whole rest. The D. Set continues its rhythmic pattern.

93

El. Guit.

St. Dr.

El. B.

B. Rec.

Synth.

Perc. Org.

Hnk. Pno.

Br.

D. Set

Detailed description: This page contains a musical score for measures 93 through 96. The score is arranged in nine staves. The first two staves, El. Guit. and St. Dr., have whole rests in measure 93. The El. B. staff begins in measure 94 with a dotted quarter note, followed by an eighth note, a quarter note, and a half note. The B. Rec. staff begins in measure 94 with a quarter rest, followed by a half note, a quarter note, a half note, and a quarter note. The Synth. staff has a whole rest in measure 93. The Perc. Org. staff has a quarter rest in measure 93, followed by a half note, a quarter note, a half note, and a quarter note. The Hnk. Pno. staff has a quarter rest in measure 93, followed by a half note, a quarter note, a half note, and a quarter note. The Br. staff has a quarter rest in measure 93, followed by a half note, a quarter note, a half note, and a quarter note. The D. Set staff has a quarter rest in measure 93, followed by a half note, a quarter note, a half note, and a quarter note. The Perc. Org. staff has a triplet of eighth notes in measure 95, followed by a quarter note, a half note, and a quarter note. The Hnk. Pno. staff has a quarter rest in measure 95, followed by a half note, a quarter note, a half note, and a quarter note. The Br. staff has a quarter rest in measure 95, followed by a half note, a quarter note, a half note, and a quarter note. The D. Set staff has a quarter rest in measure 95, followed by a half note, a quarter note, a half note, and a quarter note.

94

El. Guit.

St. Dr.

El. B.

B. Rec.

Synth.

Perc. Org.

Hnk. Pno.

Br.

D. Set

Detailed description: This page of a musical score contains measures 94 and 95. The score is for a multi-instrument ensemble. Measure 94 features a melodic line in the Electric Guitar (El. Guit.) and Electric Bass (El. B.), with the Bass also playing a triplet. The Baritone Saxophone (B. Rec.) and Percussion Organ (Perc. Org.) also have parts in this measure. Measure 95 continues the melodic themes, with the Percussion Organ playing a triplet. The Horns and Piano (Hnk. Pno.) and Drums (D. Set) provide harmonic support and rhythm throughout both measures. The score is written in standard musical notation with various clefs and time signatures.

96

El. Guit.

St. Dr.

El. B.

B. Rec.

Synth.

Perc. Org.

Hnk. Pno.

Br.

D. Set

Detailed description: This page contains a musical score for measures 96 and 97. The score is written for nine instruments: Electric Guitar (El. Guit.), Steel Drums (St. Dr.), Electric Bass (El. B.), Baritone Saxophone (B. Rec.), Synthesizer (Synth.), Percussion Organ (Perc. Org.), Horn and Piano (Hnk. Pno.), Brass (Br.), and Drums (D. Set). Measures 96 and 97 are shown. The Electric Guitar and Steel Drums have rests in both measures. The Electric Bass plays a melodic line in measure 96 and a similar line in measure 97. The Baritone Saxophone plays a melodic line in measure 96 and a similar line in measure 97. The Synthesizer has rests in both measures. The Percussion Organ plays a triplet of eighth notes in measure 96 and a triplet of eighth notes in measure 97. The Horn and Piano plays a complex melodic line in measure 96 and a similar line in measure 97. The Brass has rests in both measures. The Drums play a complex rhythmic pattern in measure 96 and a similar pattern in measure 97.

98

El. Guit.

St. Dr.

El. B.

B. Rec.

Synth.

Perc. Org.

Hnk. Pno.

Br.

D. Set

Detailed description: This musical score page contains measures 98 through 101. The instruments are arranged vertically: El. Guit. (Electric Guitar), St. Dr. (Steel Drums), El. B. (Electric Bass), B. Rec. (Baritone Saxophone), Synth. (Synthesizer), Perc. Org. (Percussion Organ), Hnk. Pno. (Honky-tonk Piano), Br. (Trumpet), and D. Set (Drum Set). Measure 98 shows the El. Guit. and B. Rec. playing a half note G4, while the El. B. plays a half note G2. The St. Dr., Synth., and Perc. Org. are silent. In measure 99, the El. Guit. and B. Rec. play a half note A4, and the El. B. plays a half note A2. The St. Dr., Synth., and Perc. Org. remain silent. Measure 100 features a more complex arrangement: the El. Guit. and B. Rec. play a half note B4, the El. B. plays a half note B2, the Synth. plays a half note B4, and the Perc. Org. plays a half note B4. The Hnk. Pno. plays a half note B4. The Br. plays a half note B4. The D. Set plays a half note B4. In measure 101, the El. Guit. and B. Rec. play a half note C5, the El. B. plays a half note C2, the Synth. plays a half note C5, and the Perc. Org. plays a half note C5. The Hnk. Pno. plays a half note C5. The Br. plays a half note C5. The D. Set plays a half note C5.

99

El. Guit.

St. Dr.

El. B.

B. Rec.

Synth.

Perc. Org.

Hnk. Pno.

Br.

D. Set

101

El. Guit.

St. Dr.

El. B.

B. Rec.

Synth.

Perc. Org.

Hnk. Pno.

Br.

D. Set

104

El. Guit.

St. Dr.

El. B.

B. Rec.

Synth.

Perc. Org.

Hnk. Pno.

Br.

D. Set

8