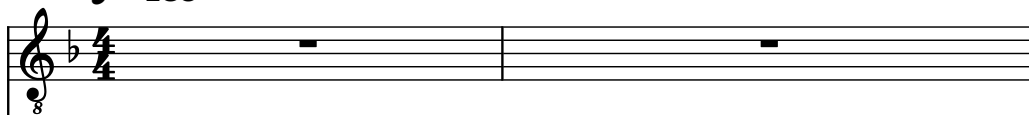
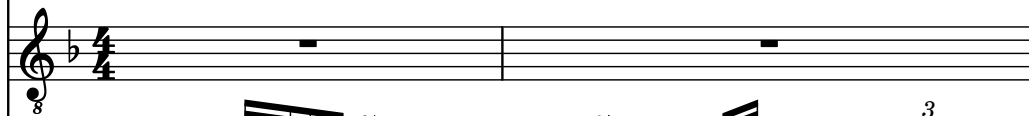


♩ = 135

Electric Guitar, cl guitar



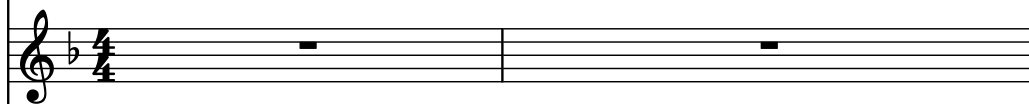
Acoustic Guitar, st guitar



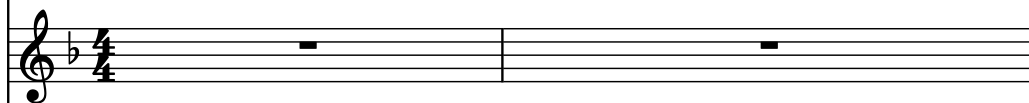
Alto Saxophone, alto sax



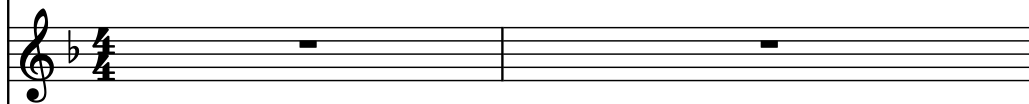
Brass, brass



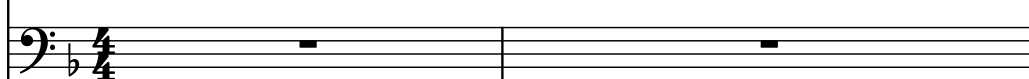
Rotary Organ, hmd organ



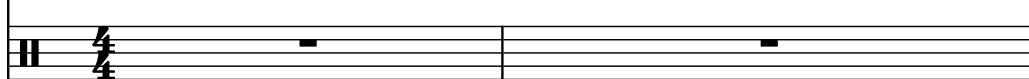
Oboe, oboe



Contrabass, bass



Drumset, drums



3

El. Guit.

Guit.

A. Sax.

Br.

Rot. Org.

Ob.

Cb.

D. Set

Measure 3: El. Guit. and Guit. play chords. A. Sax., Br., Rot. Org., and Ob. are silent.

Measure 4: El. Guit. and Guit. play chords. A. Sax. plays a melodic line. Br. plays a chord. Rot. Org. plays a chord. Ob. plays a chord. Cb. plays a melodic line. D. Set plays a rhythmic pattern.

5

El. Guit.

Guit.

A. Sax.

Br.

Rot. Org.

Ob.

Cb.

D. Set

Detailed description: This musical score page shows measures 5 through 8. The key signature has one flat (B-flat). The instruments and their parts are: Electric Guitar (El. Guit.) playing a continuous eighth-note chordal pattern; Acoustic Guitar (Guit.) playing a rhythmic pattern of eighth notes and rests; Alto Saxophone (A. Sax.) playing a single note in measure 5 and rests thereafter; Brass (Br.) playing a whole note chord in measure 5 and rests thereafter; Rotarion Organ (Rot. Org.) and Oboe (Ob.) playing whole notes in measures 6 and 7; Contrabass (Cb.) playing a melodic line of eighth and quarter notes; and Double Bass (D. Set) playing a rhythmic pattern of eighth notes and rests.

6

El. Guit.

Guit.

A. Sax.

Br.

Rot. Org.

Ob.

Cb.

D. Set

7

El. Guit.

Guit.

A. Sax.

Br.

Rot. Org.

Ob.

Cb.

D. Set

Detailed description: This musical score page contains measures 7 through 11. The instruments are arranged in a stack: El. Guit. (Electric Guitar), Guit. (Acoustic Guitar), A. Sax. (Alto Saxophone), Br. (Baritone), Rot. Org. (Rotary Organ), Ob. (Oboe), Cb. (Contrabass), and D. Set (Drum Set). The key signature has one flat (B-flat). The El. Guit. and Guit. parts feature a rhythmic pattern of eighth-note chords. The A. Sax. part has a melodic line with a slur. The Br. and Rot. Org. parts have whole rests. The Ob. part has a whole rest. The Cb. part has a melodic line with a slur. The D. Set part has a complex rhythmic pattern with various drum notations.

8

El. Guit.

Guit.

A. Sax.

Br.

Rot. Org.

Ob.

Cb.

D. Set

8

8

3

9

El. Guit.

Guit.

A. Sax.

Br.

Rot. Org.

Ob.

Cb.

D. Set

10

El. Guit.

Guit.

A. Sax.

Br.

Rot. Org.

Ob.

Cb.

D. Set

Detailed description: This musical score page contains measures 10 through 13. The instruments are arranged in a stack from top to bottom: El. Guit., Guit., A. Sax., Br., Rot. Org., Ob., Cb., and D. Set. The key signature has one flat (B-flat). The El. Guit. part features a continuous eighth-note chordal pattern. The Guit. part has a similar eighth-note pattern with occasional rests. The A. Sax. part plays a descending eighth-note line in measures 10-11, followed by a sustained note in measure 12 and a half-note in measure 13. The Br., Rot. Org., and Ob. parts are silent, indicated by whole rests. The Cb. part plays a descending eighth-note line in measures 10-11, followed by a sustained note in measure 12 and a half-note in measure 13. The D. Set part plays a complex rhythmic pattern with eighth and sixteenth notes, including a triplet in measure 12.



11

El. Guit.

Guit.

A. Sax.

Br.

Rot. Org.

Ob.

Cb.

D. Set

Detailed description: This musical score page contains measures 11 through 14. The instruments are arranged in a stack: El. Guit. (Electric Guitar), Guit. (Acoustic Guitar), A. Sax. (Alto Saxophone), Br. (Trumpet), Rot. Org. (Rotary Organ), Ob. (Oboe), Cb. (Contrabass), and D. Set (Drum Set). The key signature has one flat (B-flat). The El. Guit. part features a continuous eighth-note chordal pattern. The Guit. part has a similar pattern but with occasional rests. The A. Sax. part has a melodic line with a slur over measures 12 and 13. The Br., Rot. Org., and Ob. parts are mostly silent, with a small mark in measure 12. The Cb. part has a melodic line with a slur over measures 12 and 13. The D. Set part has a complex rhythmic pattern with many sixteenth notes.

12

El. Guit.

Guit.

A. Sax.

Br.

Rot. Org.

Ob.

Cb.

D. Set

Detailed description: This musical score page shows measures 12 through 15. The instruments are arranged in a stack from top to bottom: Electric Guitar (El. Guit.), Acoustic Guitar (Guit.), Alto Saxophone (A. Sax.), Brass (Br.), Rotarion Organ (Rot. Org.), Oboe (Ob.), Contrabass (Cb.), and Double Bass (D. Set). The key signature has one flat (B-flat). The Electric Guitar and Acoustic Guitar parts are highly active, with the Electric Guitar playing a dense, fast-moving line of chords and the Acoustic Guitar providing a rhythmic accompaniment with chords and eighth notes. The Alto Saxophone, Rotarion Organ, and Oboe parts are mostly silent, indicated by whole rests. The Brass part has some activity, including a short melodic phrase in measure 15. The Contrabass and Double Bass parts provide a steady bass line, with the Double Bass featuring some more complex rhythmic patterns and grace notes.

13

El. Guit.

Guit.

A. Sax.

Br.

Rot. Org.

Ob.

Cb.

D. Set

Detailed description: This musical score page contains measures 13 through 16. The instruments are arranged in a stack from top to bottom: El. Guit., Guit., A. Sax., Br., Rot. Org., Ob., Cb., and D. Set. The key signature has one flat (B-flat). Measure 13 starts with a rehearsal mark '13'. The El. Guit. part features a continuous eighth-note chordal pattern. The Guit. part has a similar pattern with some rests. The A. Sax. part has a melodic line with a sharp accidental. The Br. part has a melodic line with some rests. The Rot. Org. and Ob. parts are silent. The Cb. part has a melodic line. The D. Set part has a complex rhythmic pattern with many sixteenth notes and rests.

14

El. Guit.

Guit.

A. Sax.

Br.

Rot. Org.

Ob.

Cb.

D. Set

Detailed description: This musical score page contains measures 14 through 17. The instruments are arranged in eight staves. The top two staves, El. Guit. and Guit., are in treble clef with a key signature of one flat (B-flat). El. Guit. plays a continuous eighth-note chordal pattern. Guit. plays a similar pattern but with occasional rests. The middle three staves (A. Sax., Br., and Rot. Org.) are also in treble clef with a one-flat key signature. A. Sax. and Br. have sparse notes, while Rot. Org. and Ob. are mostly silent. The bottom two staves, Cb. and D. Set, are in bass clef with a one-flat key signature. Cb. plays a simple bass line. D. Set is a double-staff instrument (piano and celeste) that plays a more complex rhythmic and melodic pattern, including some grace notes and a final flourish.

15

El. Guit.

Guit.

A. Sax.

Br.

Rot. Org.

Ob.

Cb.

D. Set

Detailed description: This musical score page contains measures 15 through 18. The instruments are arranged in eight staves. The key signature has one flat (B-flat). Measure 15 is marked with a '15' above the first staff. The Electric Guitar (El. Guit.) and Guitar (Guit.) parts feature a rhythmic pattern of eighth-note chords. The Alto Saxophone (A. Sax.) and Trombone (Br.) parts have melodic lines with some rests. The Rotarion Organ (Rot. Org.) and Oboe (Ob.) parts are silent, indicated by whole rests. The Contrabass (Cb.) part has a melodic line. The Double Bass (D. Set) part includes a drum kit notation with 'x' marks for cymbals and a melodic line for the bass. The score is written in a standard musical notation style with treble and bass clefs, and various note values and rests.

16

El. Guit.

Guit.

A. Sax.

Br.

Rot. Org.

Ob.

Cb.

D. Set

This musical score page contains measures 16 through 19. The instruments and their parts are as follows:

- El. Guit. (Electric Guitar):** Plays a continuous eighth-note chordal pattern in the treble clef, starting at measure 16 and continuing through measure 19.
- Guit. (Acoustic Guitar):** Plays a rhythmic pattern in the treble clef, featuring eighth-note chords and rests, starting at measure 16 and continuing through measure 19.
- A. Sax. (Alto Saxophone):** Plays a single eighth note in measure 16, followed by rests in measures 17, 18, and 19.
- Br. (Baritone):** Plays a single eighth note in measure 16, followed by rests in measures 17 and 18, and a half note in measure 19.
- Rot. Org. (Rotary Organ):** Plays a single eighth note in measure 16, followed by rests in measures 17, 18, and 19.
- Ob. (Oboe):** Plays a single eighth note in measure 16, followed by rests in measures 17, 18, and 19.
- Cb. (Cello):** Plays a single eighth note in measure 16, followed by rests in measures 17 and 18, and a half note in measure 19.
- D. Set (Drum Set):** Plays a complex rhythmic pattern in the bass clef, featuring eighth notes, quarter notes, and rests, starting at measure 16 and continuing through measure 19.

17

El. Guit.

Guit.

A. Sax.

Br.

Rot. Org.

Ob.

Cb.

D. Set

Detailed description: This musical score page contains measures 17 through 20. The instruments are arranged in eight staves. The key signature has one flat (B-flat). Measure 17: El. Guit. plays a continuous eighth-note chordal pattern. Guit. plays a single eighth note followed by a quarter rest. A. Sax. has a whole note chord. Br. plays a half note chord. Rot. Org. and Ob. have whole rests. Cb. plays a half note. D. Set plays a complex eighth-note pattern. Measure 18: El. Guit. continues the eighth-note pattern. Guit. has a quarter rest. A. Sax. has a half note chord. Br. has a quarter rest. Rot. Org. and Ob. have whole rests. Cb. plays a half note. D. Set continues the eighth-note pattern. Measure 19: El. Guit. continues the eighth-note pattern. Guit. has a quarter rest. A. Sax. has a half note chord. Br. has a quarter rest. Rot. Org. and Ob. have whole rests. Cb. plays a half note. D. Set continues the eighth-note pattern. Measure 20: El. Guit. continues the eighth-note pattern. Guit. has a quarter rest. A. Sax. has a half note chord. Br. has a quarter rest. Rot. Org. and Ob. have whole rests. Cb. plays a half note. D. Set continues the eighth-note pattern.

18

El. Guit.

Guit.

A. Sax.

Br.

Rot. Org.

Ob.

Cb.

D. Set

The musical score for page 16, measures 18-21, is written for a band. The key signature has one flat (B-flat). The Electric Guitar (El. Guit.) and Acoustic Guitar (Guit.) parts feature a rhythmic pattern of eighth notes. The Alto Saxophone (A. Sax.) part has a long note with a grace note. The Trumpet (Br.) part has a few notes and rests. The Rotarion Organ (Rot. Org.) and Oboe (Ob.) parts have rests. The Contrabass (Cb.) part has a few notes and rests. The Drums (D. Set) part has a complex rhythmic pattern with various note values and rests.



19

El. Guit.

Guit.

A. Sax.

Br.

Rot. Org.

Ob.

Cb.

D. Set

8

8

5

20

El. Guit.

Guit.

A. Sax.

Br.

Rot. Org.

Ob.

Cb.

D. Set

21

El. Guit.

Guit.

A. Sax.

Br.

Rot. Org.

Ob.

Cb.

D. Set

Detailed description: This musical score page contains measures 21 through 24. The instruments are arranged in a stack from top to bottom: El. Guit., Guit., A. Sax., Br., Rot. Org., Ob., Cb., and D. Set. The key signature has one flat (B-flat). The El. Guit. part features a continuous eighth-note chordal pattern. The Guit. part has a similar pattern with occasional rests. The A. Sax. part has a melodic line with a sharp accidental in measure 22. The Br., Rot. Org., and Ob. parts are mostly silent, indicated by rests. The Cb. part has a melodic line with a sharp accidental in measure 22. The D. Set part has a complex rhythmic pattern with many sixteenth notes and rests.

22

El. Guit.

Guit.

A. Sax.

Br.

Rot. Org.

Ob.

Cb.

D. Set

Detailed description: This musical score page contains measures 22 through 25. The instruments are arranged in a vertical stack. The top staff, 'El. Guit.', plays a continuous eighth-note chordal pattern. The 'Guit.' staff has a similar pattern with occasional rests. The 'A. Sax.' staff has a melodic line starting in measure 23. The 'Br.', 'Rot. Org.', and 'Ob.' staves have whole rests. The 'Cb.' staff has a melodic line. The 'D. Set' staff has a complex rhythmic pattern with many beamed notes. The key signature has one flat, and the time signature is 4/4.

23

El. Guit.

Guit.

A. Sax.

Br.

Rot. Org.

Ob.

Cb.

D. Set

24

El. Guit.

Guit.

A. Sax.

Br.

Rot. Org.

Ob.

Cb.

D. Set

Detailed description: This musical score page contains measures 24 through 27. The instruments are arranged in a grand staff with the following parts from top to bottom: Electric Guitar (El. Guit.), Acoustic Guitar (Guit.), Alto Saxophone (A. Sax.), Brass (Br.), Rotarion Organ (Rot. Org.), Oboe (Ob.), Contrabass (Cb.), and Double Bass (D. Set). The key signature has one flat (B-flat). Measure 24 features a complex electric guitar solo with many beamed sixteenth notes. The acoustic guitar plays a rhythmic pattern of eighth notes. The alto saxophone has a melodic line starting with a sharp sign. The brass and rotarion organ parts have rests. The oboe part has a rest. The contrabass and double bass parts have a rhythmic pattern of eighth notes. Measure 25 continues the electric guitar solo. The acoustic guitar has a rest. The alto saxophone has a melodic line. The brass part has a rest. The rotarion organ part has a rest. The oboe part has a rest. The contrabass and double bass parts have a rhythmic pattern of eighth notes. Measure 26 continues the electric guitar solo. The acoustic guitar has a rest. The alto saxophone has a melodic line. The brass part has a rest. The rotarion organ part has a rest. The oboe part has a rest. The contrabass and double bass parts have a rhythmic pattern of eighth notes. Measure 27 continues the electric guitar solo. The acoustic guitar has a rest. The alto saxophone has a melodic line. The brass part has a rest. The rotarion organ part has a rest. The oboe part has a rest. The contrabass and double bass parts have a rhythmic pattern of eighth notes.

25

El. Guit.

Guit.

A. Sax.

Br.

Rot. Org.

Ob.

Cb.

D. Set

8

3

Detailed description: This musical score page contains measures 25 through 28. The instruments are arranged in a stack: El. Guit. (Electric Guitar), Guit. (Acoustic Guitar), A. Sax. (Alto Saxophone), Br. (Baritone), Rot. Org. (Rotary Organ), Ob. (Oboe), Cb. (Contrabass), and D. Set (Drum Set). The key signature has one flat (B-flat). The El. Guit. and Guit. parts are marked with an '8', likely indicating an octave. The A. Sax. part features a triplet of eighth notes in measure 26. The Br. and Rot. Org. parts have whole rests in measures 26 and 27. The Ob. part has a whole rest in measure 27. The Cb. part has a half note in measure 25, followed by a half note in measure 26, and a half note in measure 27. The D. Set part has a complex rhythmic pattern in measure 25, followed by a half note in measure 26, and a half note in measure 27.

26

El. Guit.

Guit.

A. Sax.

Br.

Rot. Org.

Ob.

Cb.

D. Set

This musical score page contains measures 26 through 29. The instruments and their parts are as follows:

- El. Guit. (Electric Guitar):** Measures 26-28 feature a continuous eighth-note chordal pattern. In measure 29, it plays a single chord followed by a whole rest.
- Guit. (Acoustic Guitar):** Measures 26-28 feature a rhythmic pattern of eighth notes with chords. In measure 29, it plays a single chord followed by a whole rest.
- A. Sax. (Alto Saxophone):** Measures 26-28 feature a melodic line with a triplet in measure 27. In measure 29, it plays a single note followed by a whole rest.
- Br. (Baritone):** Measures 26-28 feature a single chord in measure 26, followed by whole rests. In measure 29, it plays a single chord followed by a whole rest.
- Rot. Org. (Rotary Organ):** Measures 26-28 feature whole rests. In measure 29, it plays a single chord followed by a whole rest.
- Ob. (Oboe):** Measures 26-28 feature whole rests. In measure 29, it plays a single chord followed by a whole rest.
- Cb. (Contrabass):** Measures 26-28 feature a melodic line. In measure 29, it plays a single note followed by a whole rest.
- D. Set (Drum Set):** Measures 26-28 feature a complex rhythmic pattern with various drum sounds. In measure 29, it plays a single drum sound followed by a whole rest.



28

El. Guit.

Guit.

A. Sax.

Br.

Rot. Org.

Ob.

Cb.

D. Set

29

El. Guit.

Guit.

A. Sax.

Br.

Rot. Org.

Ob.

Cb.

D. Set

The musical score for measures 29-32 is written for a band. The Electric Guitar (El. Guit.) and Acoustic Guitar (Guit.) parts feature a rhythmic pattern of eighth notes. The Alto Saxophone (A. Sax.) part has a melodic line. The Brass (Br.) part has a rhythmic pattern of eighth notes. The Rotarion Organ (Rot. Org.) and Oboe (Ob.) parts are silent. The Contrabass (Cb.) part has a melodic line. The Drums (D. Set) part has a complex rhythmic pattern.

30

El. Guit.

Guit.

A. Sax.

Br.

Rot. Org.

Ob.

Cb.

D. Set

31

El. Guit.

Guit.

A. Sax.

Br.

Rot. Org.

Ob.

Cb.

D. Set

8

8

3

32

El. Guit.

Guit.

A. Sax.

Br.

Rot. Org.

Ob.

Cb.

D. Set

Detailed description: This musical score page contains measures 32 through 35. The instruments are arranged vertically: El. Guit., Guit., A. Sax., Br., Rot. Org., Ob., Cb., and D. Set. The key signature has one flat (B-flat). The El. Guit. part features a continuous eighth-note chordal pattern. The Guit. part has a similar eighth-note pattern with occasional rests. The A. Sax. part plays a simple melody of quarter notes. The Br. part has a melody with some rests. The Rot. Org. and Ob. parts have whole rests. The Cb. part has a simple melody of quarter notes. The D. Set part has a complex melody with many beamed sixteenth notes.

33

El. Guit.

Guit.

A. Sax.

Br.

Rot. Org.

Ob.

Cb.

D. Set

The musical score for page 30, measures 33-36, is arranged for a large ensemble. The Electric Guitar (El. Guit.) and Guitar (Guit.) parts feature a repeating eighth-note pattern. The Alto Saxophone (A. Sax.) and Brass (Br.) parts have a melodic line. The Rotarion Organ (Rot. Org.) and Oboe (Ob.) parts are silent. The Contrabass (Cb.) part has a simple bass line. The Drums (D. Set) part has a complex rhythmic pattern.

34

El. Guit.

Guit.

A. Sax.

Br.

Rot. Org.

Ob.

Cb.

D. Set

35

El. Guit.

Guit.

A. Sax.

Br.

Rot. Org.

Ob.

Cb.

D. Set

This musical score page contains measures 35 through 38. The instruments and their parts are as follows:

- El. Guit. (Electric Guitar):** Plays a continuous eighth-note chordal pattern in the treble clef, starting at measure 35 and ending at measure 38.
- Guit. (Acoustic Guitar):** Plays a rhythmic pattern in the treble clef, featuring eighth-note chords and rests, starting at measure 35 and ending at measure 38.
- A. Sax. (Alto Saxophone):** Plays a melodic line in the treble clef, starting at measure 35 and ending at measure 38.
- Br. (Baritone):** Plays a rhythmic pattern in the treble clef, featuring eighth-note chords and rests, starting at measure 35 and ending at measure 38.
- Rot. Org. (Rotary Organ):** Plays a sustained chord in the treble clef, starting at measure 35 and ending at measure 38.
- Ob. (Oboe):** Plays a sustained chord in the treble clef, starting at measure 35 and ending at measure 38.
- Cb. (Contrabass):** Plays a melodic line in the bass clef, starting at measure 35 and ending at measure 38.
- D. Set (Drum Set):** Plays a complex rhythmic pattern in the bass clef, starting at measure 35 and ending at measure 38.



36

El. Guit.

Guit.

A. Sax.

Br.

Rot. Org.

Ob.

Cb.

D. Set

Detailed description: This musical score page contains measures 36 through 39. The instruments are arranged in a stack: El. Guit. (Electric Guitar), Guit. (Acoustic Guitar), A. Sax. (Alto Saxophone), Br. (Baritone), Rot. Org. (Rotary Organ), Ob. (Oboe), Cb. (Cello), and D. Set (Drum Set). The key signature has one flat (B-flat). The El. Guit. part features a continuous eighth-note chordal pattern. The Guit. part has a similar pattern with occasional rests. The A. Sax. part has a sparse melody with eighth and quarter notes. The Br. part plays a series of chords. The Rot. Org. and Ob. parts are silent, indicated by a horizontal line. The Cb. part has a simple bass line. The D. Set part includes a variety of rhythmic patterns, including eighth notes, quarter notes, and a double bar line.

37

El. Guit.

Guit.

A. Sax.

Br.

Rot. Org.

Ob.

Cb.

D. Set

Detailed description: This page contains measures 37 through 40 of a musical score. The score is written for eight instruments: Electric Guitar (El. Guit.), Acoustic Guitar (Guit.), Alto Saxophone (A. Sax.), Brass (Br.), Rotarion Organ (Rot. Org.), Oboe (Ob.), Contrabass (Cb.), and Double Bass (D. Set). The key signature has one flat (B-flat). The time signature is 8/8. In measure 37, the Electric Guitar and Acoustic Guitar play a series of eighth-note chords. The Alto Saxophone plays a single eighth note. The Brass section plays a single eighth note. The Rotarion Organ and Oboe are silent. The Contrabass plays a single eighth note. The Double Bass plays a series of eighth-note chords. In measure 38, the Electric Guitar and Acoustic Guitar continue their eighth-note chord pattern. The Alto Saxophone plays a single eighth note. The Brass section plays a single eighth note. The Rotarion Organ and Oboe are silent. The Contrabass plays a single eighth note. The Double Bass plays a series of eighth-note chords. In measure 39, the Electric Guitar and Acoustic Guitar continue their eighth-note chord pattern. The Alto Saxophone plays a single eighth note. The Brass section plays a single eighth note. The Rotarion Organ and Oboe are silent. The Contrabass plays a single eighth note. The Double Bass plays a series of eighth-note chords. In measure 40, the Electric Guitar and Acoustic Guitar continue their eighth-note chord pattern. The Alto Saxophone plays a single eighth note. The Brass section plays a single eighth note. The Rotarion Organ and Oboe are silent. The Contrabass plays a single eighth note. The Double Bass plays a series of eighth-note chords.

38

El. Guit.

Guit.

A. Sax.

Br.

Rot. Org.

Ob.

Cb.

D. Set

The musical score for measures 38-41 is written for a band. The key signature has one flat (B-flat). The Electric Guitar (El. Guit.) and Acoustic Guitar (Guit.) parts feature a rhythmic pattern of eighth notes. The Alto Saxophone (A. Sax.) and Oboe (Ob.) parts are mostly rests. The Trumpet (Br.) part has a few notes. The Rotarion Organ (Rot. Org.) part is mostly rests. The Contrabass (Cb.) part has a few notes. The Drums (D. Set) part has a complex pattern with many notes and rests.

39

El. Guit.

Guit.

A. Sax.

Br.

Rot. Org.

Ob.

Cb.

D. Set

8

8

3

40

El. Guit.

Guit.

A. Sax.

Br.

Rot. Org.

Ob.

Cb.

D. Set

Detailed description: This musical score page contains measures 40 through 43. The instruments are arranged in a stack from top to bottom: El. Guit., Guit., A. Sax., Br., Rot. Org., Ob., Cb., and D. Set. The key signature has one flat (B-flat). The El. Guit. part features a continuous eighth-note chordal pattern. The Guit. part has a similar eighth-note pattern with occasional rests. The A. Sax. part has a single note in measure 40, followed by rests and a quarter note in measure 43. The Br. part has a single note in measure 40, followed by rests and a quarter note in measure 43. The Rot. Org. and Ob. parts have rests throughout. The Cb. part has a single note in measure 40, followed by rests and a quarter note in measure 43. The D. Set part has a complex rhythmic pattern with eighth and sixteenth notes, including a double bar line in measure 41.

41

El. Guit.

Guit.

A. Sax.

Br.

Rot. Org.

Ob.

Cb.

D. Set

The musical score for page 38, measures 41-44, is written for a band. The key signature has one flat (B-flat). The Electric Guitar (El. Guit.) and Acoustic Guitar (Guit.) parts feature a rhythmic pattern of eighth notes. The Alto Saxophone (A. Sax.) and Brass (Br.) parts have a melodic line. The Rotarion Organ (Rot. Org.) and Oboe (Ob.) parts are silent. The Contrabass (Cb.) part has a melodic line. The Drums (D. Set) part has a complex rhythmic pattern.

42

El. Guit.

Guit.

A. Sax.

Br.

Rot. Org.

Ob.

Cb.

D. Set

43

El. Guit.

Guit.

A. Sax.

Br.

Rot. Org.

Ob.

Cb.

D. Set



44

El. Guit.

Guit.

A. Sax.

Br.

Rot. Org.

Ob.

Cb.

D. Set

45

El. Guit.

Guit.

A. Sax.

Br.

Rot. Org.

Ob.

Cb.

D. Set

This musical score page contains measures 45 through 48. The instruments and their parts are as follows:

- El. Guit. (Electric Guitar):** Treble clef, key of B-flat. Measure 45 has a whole rest. Measures 46-48 feature a complex, fast-moving melodic line with many triplets and sixteenth notes.
- Guit. (Acoustic Guitar):** Treble clef, key of B-flat. Measure 45 has a whole rest. Measures 46-48 feature a complex, fast-moving melodic line with many triplets and sixteenth notes.
- A. Sax. (Alto Saxophone):** Treble clef, key of B-flat. Measure 45 has a whole rest. Measures 46-48 feature a melodic line with a triplet in measure 46 and a half note in measure 47.
- Br. (Baritone):** Treble clef, key of B-flat. Measure 45 has a whole rest. Measures 46-48 feature a melodic line with a triplet in measure 46 and a half note in measure 47.
- Rot. Org. (Rotary Organ):** Treble clef, key of B-flat. Measure 45 has a whole rest. Measures 46-48 feature a melodic line with a triplet in measure 46 and a half note in measure 47.
- Ob. (Oboe):** Treble clef, key of B-flat. Measure 45 has a whole rest. Measures 46-48 feature a melodic line with a triplet in measure 46 and a half note in measure 47.
- Cb. (Cello):** Bass clef, key of B-flat. Measure 45 has a whole rest. Measures 46-48 feature a melodic line with a triplet in measure 46 and a half note in measure 47.
- D. Set (Drum Set):** Percussion clef. Measure 45 has a whole rest. Measures 46-48 feature a complex, fast-moving melodic line with many triplets and sixteenth notes.

46

46

El. Guit.

Guit.

A. Sax.

Br.

Rot. Org.

Ob.

Cb.

D. Set

This musical score page contains measures 46 through 49. The instruments and their parts are as follows:

- El. Guit. (Electric Guitar):** Measures 46 and 47 are marked with a whole rest. In measure 48, it plays a single eighth note. In measure 49, it plays a single eighth note.
- Guit. (Guitar):** Measures 46 and 47 are marked with a whole rest. In measure 48, it plays a complex rhythmic pattern consisting of eighth notes and sixteenth notes, with a triplet of eighth notes indicated. In measure 49, it plays a similar complex rhythmic pattern.
- A. Sax. (Alto Saxophone):** Measures 46 and 47 are marked with a whole rest. In measure 48, it plays a single eighth note. In measure 49, it plays a single eighth note.
- Br. (Brass):** Measures 46 and 47 are marked with a whole rest. In measure 48, it plays a single eighth note. In measure 49, it plays a single eighth note.
- Rot. Org. (Rotarion Organ):** Measures 46 and 47 are marked with a whole rest. In measure 48, it plays a complex rhythmic pattern consisting of eighth notes and sixteenth notes, with a triplet of eighth notes indicated. In measure 49, it plays a similar complex rhythmic pattern.
- Ob. (Oboe):** Measures 46 and 47 are marked with a whole rest. In measure 48, it plays a single eighth note. In measure 49, it plays a single eighth note.
- Cb. (Contrabass):** Measures 46 and 47 are marked with a whole rest. In measure 48, it plays a single eighth note. In measure 49, it plays a single eighth note.
- D. Set (Drums):** Measures 46 and 47 are marked with a whole rest. In measure 48, it plays a complex rhythmic pattern consisting of eighth notes and sixteenth notes, with a triplet of eighth notes indicated. In measure 49, it plays a similar complex rhythmic pattern.

47

El. Guit.

Guit.

A. Sax.

Br.

Rot. Org.

Ob.

Cb.

D. Set

This musical score page contains measures 47 through 50. The instruments and their parts are as follows:

- El. Guit. (Electric Guitar):** Treble clef, key of B-flat. Measure 47 has a whole rest. Measures 48-50 are silent.
- Guit. (Acoustic Guitar):** Treble clef, key of B-flat. Measures 47-50 feature a complex, fast-paced melodic line with many beamed sixteenth and thirty-second notes. Trills are indicated in measures 48, 49, and 50.
- A. Sax. (Alto Saxophone):** Treble clef, key of B-flat. Measures 47-50 feature a melodic line with eighth and quarter notes, including triplet markings in measures 48, 49, and 50.
- Br. (Baritone):** Treble clef, key of B-flat. Measure 47 has a whole rest. Measures 48-50 are silent.
- Rot. Org. (Rotary Organ):** Treble clef, key of B-flat. Measures 47-50 feature a melodic line with eighth and quarter notes, including a triplet marking in measure 48.
- Ob. (Oboe):** Treble clef, key of B-flat. Measure 47 has a whole rest. Measures 48-50 are silent.
- Cb. (Cello):** Bass clef, key of B-flat. Measures 47-50 feature a simple harmonic line with quarter notes.
- D. Set (Double Bass):** Bass clef, key of B-flat. Measures 47-50 feature a simple harmonic line with quarter notes, including a triplet marking in measure 48.

48

El. Guit.

Guit.

A. Sax.

Br.

Rot. Org.

Ob.

Cb.

D. Set

Detailed description: This musical score page contains measures 48 through 51. The instruments are arranged in a standard orchestral layout. The guitar parts (El. Guit. and Guit.) feature complex, fast-moving lines with many beamed sixteenth and thirty-second notes. The saxophone (A. Sax.) has a melodic line with a five-measure rest in measure 49. The woodwinds (Br., Ob.) and brass (Cb.) have more sparse, sustained notes. The double bass (D. Set) provides a rhythmic foundation with eighth and sixteenth notes. Measure numbers 48, 49, 50, and 51 are indicated at the start of their respective staves.

49

El. Guit.

Guit.

A. Sax.

Br.

Rot. Org.

Ob.

Cb.

D. Set

This musical score page contains measures 49 through 52. The instruments and their parts are as follows:

- El. Guit. (Electric Guitar):** Measures 49 and 50 are marked with a whole rest. In measure 51, it plays a single eighth note. In measure 52, it plays a single eighth note.
- Guit. (Acoustic Guitar):** Measures 49 and 50 are marked with a whole rest. In measure 51, it plays a complex rhythmic pattern of eighth and sixteenth notes, including triplets. In measure 52, it continues this pattern.
- A. Sax. (Alto Saxophone):** Measures 49 and 50 are marked with a whole rest. In measure 51, it plays a triplet of eighth notes. In measure 52, it plays a single eighth note.
- Br. (Baritone):** Measures 49 and 50 are marked with a whole rest. In measure 51, it plays a triplet of eighth notes. In measure 52, it plays a single eighth note.
- Rot. Org. (Rotary Organ):** Measures 49 and 50 are marked with a whole rest. In measure 51, it plays a triplet of eighth notes. In measure 52, it plays a single eighth note.
- Ob. (Oboe):** Measures 49 and 50 are marked with a whole rest. In measure 51, it plays a triplet of eighth notes. In measure 52, it plays a single eighth note.
- Cb. (Cello):** Measures 49 and 50 are marked with a whole rest. In measure 51, it plays a single eighth note. In measure 52, it plays a single eighth note.
- D. Set (Drum Set):** Measures 49 and 50 are marked with a whole rest. In measure 51, it plays a triplet of eighth notes. In measure 52, it plays a single eighth note.

50

El. Guit.

Guit.

A. Sax.

Br.

Rot. Org.

Ob.

Cb.

D. Set

The musical score for page 50 is arranged in seven staves. The top staff, labeled 'El. Guit.', is in treble clef with a key signature of one flat and a time signature of 8. It contains a single measure with a whole rest. The second staff, 'Guit.', is also in treble clef with a key signature of one flat and a time signature of 8. It features a complex rhythmic pattern with triplets and slurs. The third staff, 'A. Sax.', is in treble clef with a key signature of one flat and a time signature of 8. It contains a single measure with a whole rest. The fourth staff, 'Br.', is in treble clef with a key signature of one flat and a time signature of 8. It contains a single measure with a whole rest. The fifth staff, 'Rot. Org.', is in treble clef with a key signature of one flat and a time signature of 8. It features a complex rhythmic pattern with triplets and slurs. The sixth staff, 'Ob.', is in treble clef with a key signature of one flat and a time signature of 8. It contains a single measure with a whole rest. The seventh staff, 'Cb.', is in bass clef with a key signature of one flat and a time signature of 8. It features a complex rhythmic pattern with triplets and slurs. The eighth staff, 'D. Set', is in bass clef with a key signature of one flat and a time signature of 8. It features a complex rhythmic pattern with triplets and slurs.

51

El. Guit.

Guit.

A. Sax.

Br.

Rot. Org.

Ob.

Cb.

D. Set



52

El. Guit.

Guit.

A. Sax.

Br.

Rot. Org.

Ob.

Cb.

D. Set

The musical score for page 52 consists of seven staves, each representing a different instrument. The staves are labeled on the left: El. Guit., Guit., A. Sax., Br., Rot. Org., Ob., and D. Set. The key signature is one flat (B-flat). The time signature is not explicitly shown but appears to be 4/4 based on the notation. The El. Guit. staff has a treble clef and a key signature of one flat. The Guit. staff has a treble clef and a key signature of one flat. The A. Sax. staff has a treble clef and a key signature of one flat. The Br. staff has a treble clef and a key signature of one flat. The Rot. Org. staff has a treble clef and a key signature of one flat. The Ob. staff has a treble clef and a key signature of one flat. The Cb. staff has a bass clef and a key signature of one flat. The D. Set staff has a bass clef and a key signature of one flat. The score includes various musical notations such as eighth notes, triplets, and rests. The El. Guit. staff features a series of eighth notes with triplets. The Guit. staff features a series of eighth notes with triplets. The A. Sax. staff features a series of eighth notes with triplets. The Br. staff features a series of eighth notes with triplets. The Rot. Org. staff features a series of eighth notes with triplets. The Ob. staff features a series of eighth notes with triplets. The Cb. staff features a series of eighth notes with triplets. The D. Set staff features a series of eighth notes with triplets.

53

El. Guit.

Guit.

A. Sax.

Br.

Rot. Org.

Ob.

Cb.

D. Set

54

El. Guit.

Guit.

A. Sax.

Br.

Rot. Org.

Ob.

Cb.

D. Set

The musical score for page 51, starting at measure 54, is written for a band. The key signature has one flat (B-flat). The score includes parts for the following instruments: Electric Guitar (El. Guit.), Guitar (Guit.), Alto Saxophone (A. Sax.), Baritone (Br.), Rotarion Organ (Rot. Org.), Oboe (Ob.), Contrabass (Cb.), and Double Bass (D. Set). The Electric Guitar and Guitar parts feature complex rhythmic patterns with triplets and sixteenth notes. The Alto Saxophone and Baritone parts are mostly rests. The Rotarion Organ part has a melodic line with triplets. The Oboe part is a rest. The Contrabass part has a simple bass line. The Double Bass part has a complex rhythmic pattern with triplets and sixteenth notes.

55

El. Guit.

Guit.

A. Sax.

Br.

Rot. Org.

Ob.

Cb.

D. Set

The musical score for page 52, measures 55-60, is written for a band. The key signature has one flat (B-flat). The score includes staves for El. Guit., Guit., A. Sax., Br., Rot. Org., Ob., Cb., and D. Set. Measure 55 starts with a treble clef and a key signature of one flat. The Guit. staff features a complex rhythmic pattern with triplets and sixteenth notes. The A. Sax. staff has a melodic line with triplets. The Rot. Org. staff has a melodic line with triplets. The D. Set staff has a bass line with triplets. The Br. and Ob. staves are empty.

56

El. Guit.

Guit.

A. Sax.

Br.

Rot. Org.

Ob.

Cb.

D. Set

This musical score page contains measures 56 through 59. The instruments are arranged in a grand staff with the following parts from top to bottom: Electric Guitar (El. Guit.), Acoustic Guitar (Guit.), Alto Saxophone (A. Sax.), Brass (Br.), Rotarion Organ (Rot. Org.), Oboe (Ob.), Contrabass (Cb.), and Double Bass (D. Set). The key signature has one flat (B-flat). Measure 56 features a guitar solo with eighth-note triplets and a melodic line in the Alto Saxophone. Measure 57 continues the guitar solo and introduces a melodic line in the Rotarion Organ. Measure 58 shows the guitar solo continuing, with the Contrabass and Double Bass providing a harmonic foundation. Measure 59 concludes the sequence with a final guitar chord and a melodic flourish in the Rotarion Organ.

57

El. Guit.

Guit.

A. Sax.

Br.

Rot. Org.

Ob.

Cb.

D. Set

This musical score page contains measures 57 through 60. The instruments are arranged in eight staves: El. Guit., Guit., A. Sax., Br., Rot. Org., Ob., Cb., and D. Set. The key signature has one flat (B-flat), and the time signature is 4/4. Measure 57 features a guitar solo with eighth-note triplets and sixteenth-note patterns. The A. Sax. and Rot. Org. play a melodic line with a triplet in measure 58. The Cb. and D. Set provide a harmonic foundation with sustained notes and a triplet in measure 59. Measure 60 continues the melodic and harmonic development.

58

58

El. Guit.

Guit.

A. Sax.

Br.

Rot. Org.

Ob.

Cb.

D. Set

This musical score page contains measures 58 through 61. The instruments and their parts are as follows:

- El. Guit. (Electric Guitar):** Plays a sustained chord in measure 58 and remains silent in measures 59-61.
- Guit. (Guitar):** Features a complex rhythmic pattern in measure 58, including triplets and sixteenth notes, which continues in measures 59-61.
- A. Sax. (Alto Saxophone):** Plays a melodic line starting in measure 58, featuring a triplet of eighth notes, and continues through measure 61.
- Br. (Brass):** Plays a sustained chord in measure 58 and remains silent in measures 59-61.
- Rot. Org. (Rotarion Organ):** Plays a melodic line in measure 58, featuring a triplet of eighth notes, and continues through measure 61.
- Ob. (Oboe):** Plays a sustained chord in measure 58 and remains silent in measures 59-61.
- Cb. (Contrabass):** Plays a melodic line in measure 58, featuring a triplet of eighth notes, and continues through measure 61.
- D. Set (Double Bass):** Plays a melodic line in measure 58, featuring a triplet of eighth notes, and continues through measure 61.

59

El. Guit.

Guit.

A. Sax.

Br.

Rot. Org.

Ob.

Cb.

D. Set



60

El. Guit.

Guit.

A. Sax.

Br.

Rot. Org.

Ob.

Cb.

D. Set

This musical score page contains measures 60 through 63. The instruments and their parts are as follows:

- El. Guit. (Electric Guitar):** Measures 60-61 feature a continuous eighth-note pattern. In measure 62, it plays a series of chords. In measure 63, it plays a series of chords.
- Guit. (Acoustic Guitar):** Measures 60-61 feature a continuous eighth-note pattern. In measure 62, it plays a series of chords. In measure 63, it plays a series of chords.
- A. Sax. (Alto Saxophone):** Measures 60-61 feature a continuous eighth-note pattern. In measure 62, it plays a series of chords. In measure 63, it plays a series of chords.
- Br. (Brass):** Measures 60-61 feature a continuous eighth-note pattern. In measure 62, it plays a series of chords. In measure 63, it plays a series of chords.
- Rot. Org. (Rotarion Organ):** Measures 60-61 feature a continuous eighth-note pattern. In measure 62, it plays a series of chords. In measure 63, it plays a series of chords.
- Ob. (Oboe):** Measures 60-61 feature a continuous eighth-note pattern. In measure 62, it plays a series of chords. In measure 63, it plays a series of chords.
- Cb. (Contrabass):** Measures 60-61 feature a continuous eighth-note pattern. In measure 62, it plays a series of chords. In measure 63, it plays a series of chords.
- D. Set (Drums):** Measures 60-61 feature a continuous eighth-note pattern. In measure 62, it plays a series of chords. In measure 63, it plays a series of chords.

61

El. Guit.

Guit.

A. Sax.

Br.

Rot. Org.

Ob.

Cb.

D. Set

The musical score for page 58, measures 61-64, is written for a band. The key signature has one flat (B-flat). Measure 61 features a dense electric guitar texture with eighth-note chords. The acoustic guitar plays a rhythmic pattern of eighth notes. The alto saxophone has a melodic line starting with a sharp sign. The brass and organ are silent. The oboe has a melodic line. The contrabass and double bass have a rhythmic pattern of eighth notes.

62

El. Guit.

Guit.

A. Sax.

Br.

Rot. Org.

Ob.

Cb.

D. Set

Detailed description: This musical score page contains measures 62 through 65. The instruments are arranged in a stack from top to bottom: Electric Guitar (El. Guit.), Acoustic Guitar (Guit.), Alto Saxophone (A. Sax.), Brass (Br.), Rotarion Organ (Rot. Org.), Oboe (Ob.), Contrabass (Cb.), and Double Bass (D. Set). The key signature has one flat (B-flat). The Electric Guitar and Acoustic Guitar parts feature a rhythmic pattern of eighth-note chords. The Alto Saxophone has a melodic line starting with a triplet of eighth notes. The Brass and Rotarion Organ parts are mostly silent, indicated by whole rests. The Oboe part has a melodic line with a long slur. The Contrabass part has a melodic line with a long slur. The Double Bass part has a complex rhythmic pattern with many beamed notes.

63

El. Guit.

Guit.

A. Sax.

Br.

Rot. Org.

Ob.

Cb.

D. Set

64

El. Guit.

Guit.

A. Sax.

Br.

Rot. Org.

Ob.

Cb.

D. Set

Detailed description: This musical score page contains measures 64 through 67. The instruments are arranged in a stack from top to bottom: Electric Guitar (El. Guit.), Acoustic Guitar (Guit.), Alto Saxophone (A. Sax.), Brass (Br.), Rotarion Organ (Rot. Org.), Oboe (Ob.), Contrabass (Cb.), and Double Bass (D. Set). The key signature has one flat (B-flat). The time signature is 8/8. The Electric Guitar and Acoustic Guitar parts feature a rhythmic pattern of eighth notes and chords. The Alto Saxophone and Oboe parts have melodic lines with slurs. The Brass and Rotarion Organ parts have rests. The Contrabass and Double Bass parts have a rhythmic pattern of eighth notes and chords.

65

El. Guit.

Guit.

A. Sax.

Br.

Rot. Org.

Ob.

Cb.

D. Set

Detailed description: This musical score page contains measures 65 through 68. The instruments are arranged in a stack from top to bottom: El. Guit., Guit., A. Sax., Br., Rot. Org., Ob., Cb., and D. Set. The key signature has one flat (B-flat). Measure 65 features a complex guitar part with eighth-note chords and a melodic line in the alto saxophone. Measure 66 continues the guitar and saxophone parts, with the saxophone playing a descending scale. Measure 67 shows the saxophone playing a sustained note with a slur. Measure 68 concludes the sequence with a final chord in the guitar and saxophone. The double bass (Cb.) and double set (D. Set) provide a steady rhythmic foundation throughout the measures.

66

El. Guit.

Guit.

A. Sax.

Br.

Rot. Org.

Ob.

Cb.

D. Set

67

El. Guit.

Guit.

A. Sax.

Br.

Rot. Org.

Ob.

Cb.

D. Set

This musical score page contains measures 67 through 70. The instruments and their parts are as follows:

- El. Guit. (Electric Guitar):** Plays a continuous eighth-note chordal pattern in the treble clef, starting on a B-flat. A '8' is written below the staff.
- Guit. (Acoustic Guitar):** Plays a rhythmic pattern in the treble clef, primarily using eighth notes and rests. A '8' is written below the staff.
- A. Sax. (Alto Saxophone):** Features a melodic line in the treble clef with slurs and ties across measures.
- Br. (Baritone):** Plays a sustained chord in the treble clef at the beginning of the measure, then rests.
- Rot. Org. (Rotary Organ):** Remains silent throughout these measures.
- Ob. (Oboe):** Plays a melodic line in the treble clef, including a half-note phrase with a slur.
- Cb. (Cello):** Plays a bass line in the bass clef, consisting of quarter and eighth notes.
- D. Set (Drum Set):** Shows a complex rhythmic pattern in the bass clef, including sixteenth-note runs and various rests.



68

El. Guit.

Guit.

A. Sax.

Br.

Rot. Org.

Ob.

Cb.

D. Set

The musical score for measures 68-71 is written for a band. The Electric Guitar (El. Guit.) and Acoustic Guitar (Guit.) parts feature a rhythmic pattern of eighth notes. The Alto Saxophone (A. Sax.) part has a melodic line with a triplet. The Brass (Br.) and Rotarion Organ (Rot. Org.) parts have a single note. The Oboe (Ob.) part has a single note. The Contrabass (Cb.) part has a melodic line. The Drums (D. Set) part has a complex rhythmic pattern.

69

El. Guit.

Guit.

A. Sax.

Br.

Rot. Org.

Ob.

Cb.

D. Set

8

8

3

70

El. Guit.

Guit.

A. Sax.

Br.

Rot. Org.

Ob.

Cb.

D. Set

71

El. Guit.

Guit.

A. Sax.

Br.

Rot. Org.

Ob.

Cb.

D. Set

The musical score for page 68, measures 71-74, is written for a band. The key signature has one flat (B-flat). The Electric Guitar (El. Guit.) and Acoustic Guitar (Guit.) parts feature a rhythmic pattern of eighth notes. The Alto Saxophone (A. Sax.) part has a melodic line with a slur. The Brass (Br.) part has rests. The Rotarion Organ (Rot. Org.) and Oboe (Ob.) parts have rests. The Contrabass (Cb.) part has a melodic line. The Drums (D. Set) part has a complex rhythmic pattern.

72

El. Guit.

Guit.

A. Sax.

Br.

Rot. Org.

Ob.

Cb.

D. Set

Detailed description: This musical score page contains measures 72 through 75. The instruments are arranged in a stack from top to bottom: El. Guit., Guit., A. Sax., Br., Rot. Org., Ob., Cb., and D. Set. The key signature has one flat (B-flat). The El. Guit. part features a continuous eighth-note chordal pattern. The Guit. part has a similar eighth-note pattern with occasional rests. The A. Sax. part has a long note in measure 72, followed by a descending line in measure 75. The Br. and Rot. Org. parts have a single note in measure 72 and a rest for the remainder of the measures. The Ob. part has a single note in measure 72 and a rest for the remainder of the measures. The Cb. part has a single note in measure 72 and a rest for the remainder of the measures. The D. Set part has a single note in measure 72 and a rest for the remainder of the measures.

73

El. Guit.

Guit.

A. Sax.

Br.

Rot. Org.

Ob.

Cb.

D. Set

This musical score page contains measures 73 through 76. The instruments are arranged in a stack from top to bottom: El. Guit., Guit., A. Sax., Br., Rot. Org., Ob., Cb., and D. Set. The key signature has one flat (B-flat). Measure 73 features a complex texture with the El. Guit. playing a rapid sixteenth-note pattern, the Guit. playing chords with grace notes, the A. Sax. playing a melodic line with a slur, the Br. playing a chord, the Rot. Org. playing a chord, the Ob. playing a melodic line with a slur, the Cb. playing a melodic line, and the D. Set playing a complex rhythmic pattern. Measures 74 and 75 continue this texture with various melodic and harmonic developments. Measure 76 concludes the section with a final chordal texture across all instruments.