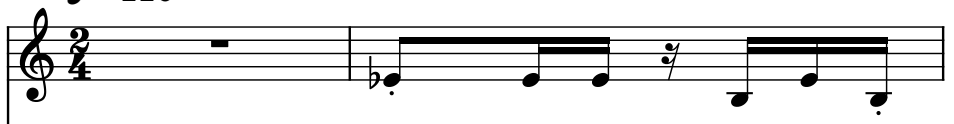
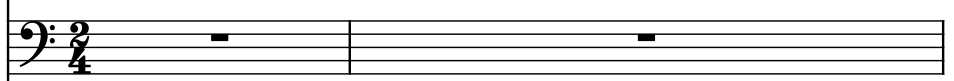


♩ = 110

B♭ Trumpet, TRUMPET



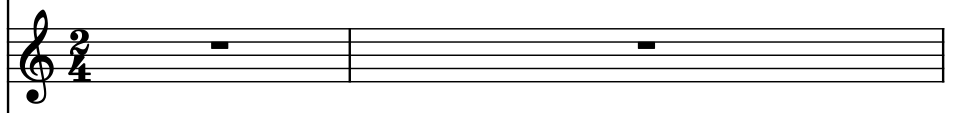
Trombone, T-BONE



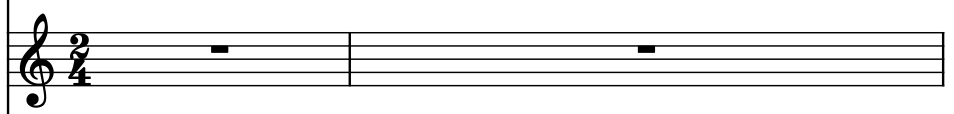
Brass, BRASS



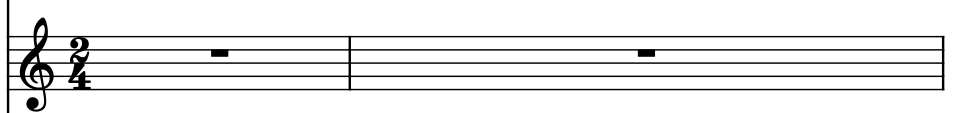
Piccolo, PICCOLO



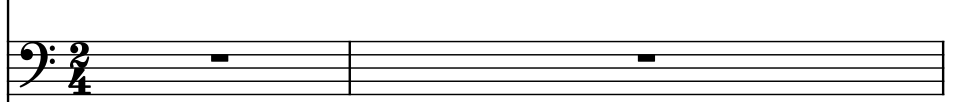
B♭ Clarinet, CLARINET



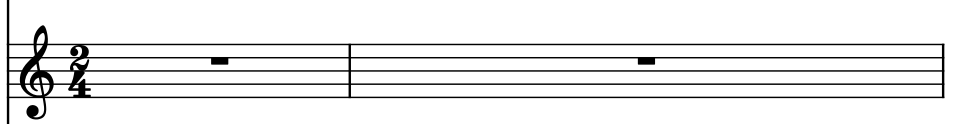
Baritone Saxophone, BARI SAX



Contrabass, ACC. BASS



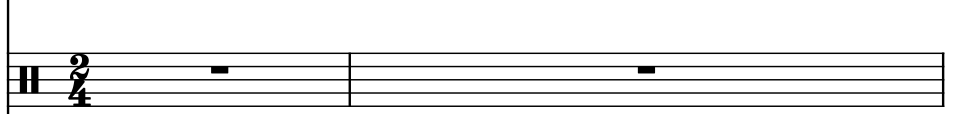
B♭ Trumpet, MUTED TRUMPET



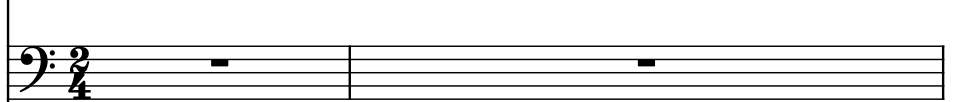
Timpani, TIMPANI



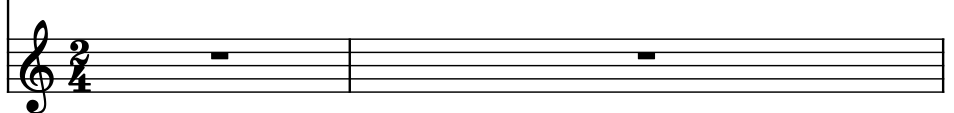
Drumset, DRUMS



Bassoon, BASSOON



Tenor Saxophone, TENOR SAX



3

B $\flat$  Tpt.

Tbn.

Br.

Picc.

B $\flat$  Cl.

Bar. Sax.

Cb.

B $\flat$  Tpt.

Timp.

D. Set

Bsn.

T. Sax.

Pdf downloaded from [www.midicities.com](http://www.midicities.com)

10

B $\flat$  Tpt.

Tbn.

Br.

Picc.

B $\flat$  Cl.

Bar. Sax.

Cb.

B $\flat$  Tpt.

Timp.

D. Set

Bsn.

T. Sax.

3

7

16

16

B $\flat$  Tpt.

Tbn.

Br.

Picc.

B $\flat$  Cl.

Bar. Sax.

Cb.

B $\flat$  Tpt.

Timp.

D. Set

Bsn.

T. Sax.

Detailed description: This musical score page contains measures 16 through 21. The instruments are arranged in a standard orchestral layout. Measures 16-20 show most instruments with whole rests, while the Baritone Saxophone, Contrabass, and Bb Trumpet have active parts. In measure 21, the Baritone Saxophone and Contrabass have whole rests, while the Bb Trumpet and Baritone Saxophone have active parts. The Drum Set (D. Set) plays a consistent pattern of eighth notes with 'x' marks above them. The Bassoon (Bsn.) has a melodic line in measures 16-20 and a whole rest in measure 21. The Tenor Saxophone (T. Sax.) has whole rests throughout.

22

B $\flat$  Tpt.

Tbn.

Br.

Picc.

B $\flat$  Cl.

Bar. Sax.

Cb.

B $\flat$  Tpt.

Timp.

D. Set

Bsn.

T. Sax.

28

28

B $\flat$  Tpt.

Tbn.

Br.

Picc.

B $\flat$  Cl.

Bar. Sax.

Cb.

B $\flat$  Tpt.

Timp.

D. Set

Bsn.

T. Sax.

35

B $\flat$  Tpt.

Tbn.

Br.

Picc.

B $\flat$  Cl.

Bar. Sax.

Cb.

B $\flat$  Tpt.

Timp.

D. Set

Bsn.

T. Sax.

3



41

B $\flat$  Tpt.

Tbn.

Br.

Picc.

B $\flat$  Cl.

Bar. Sax.

Cb.

B $\flat$  Tpt.

Timp.

D. Set

Bsn.

T. Sax.

7

46

B $\flat$  Tpt.

Tbn.

Br.

Picc.

B $\flat$  Cl.

Bar. Sax.

Cb.

B $\flat$  Tpt.

Timp.

D. Set

Bsn.

T. Sax.

51

51

B $\flat$  Tpt.

Tbn.

Br.

Picc.

B $\flat$  Cl.

Bar. Sax.

Cb.

B $\flat$  Tpt.

Timp.

D. Set

Bsn.

T. Sax.

3

57

B $\flat$  Tpt.

Tbn.

Br.

Picc.

B $\flat$  Cl.

Bar. Sax.

Cb.

B $\flat$  Tpt.

Timp.

D. Set

Bsn.

T. Sax.