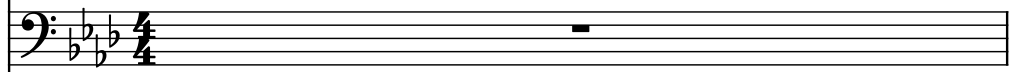


♩ = 138

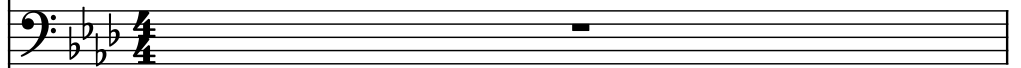
Electric Bass, bassline



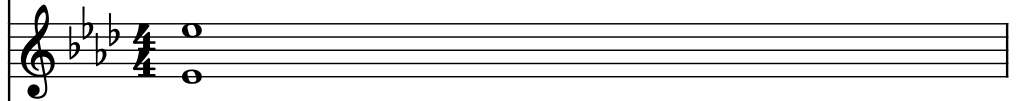
Saw Synthesizer, lead



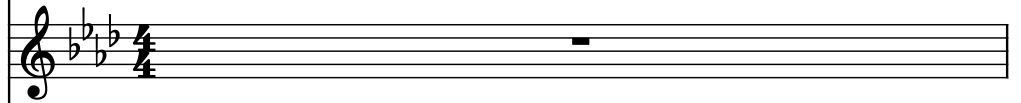
Saw Synthesizer, lead delay



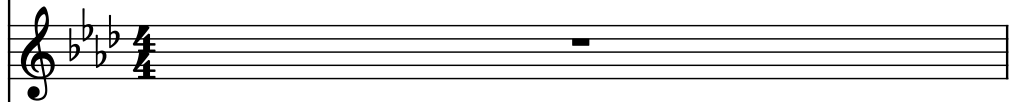
Violins, strings



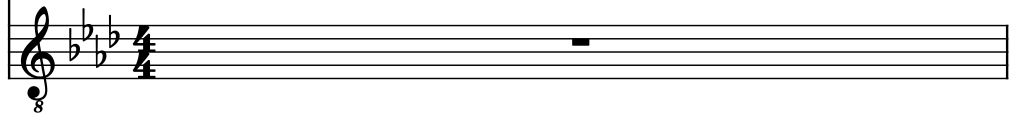
Square Synthesizer, plucks



Strings, strings 2



Contra Guitar, pulse



El. B.

Synth.

Synth.

Vlns.

Synth.

St.

C. Guit.

8

4

El. B.

Synth.

Synth.

Vlns.

Synth.

St.

C. Guit.

8

El. B.

Synth.

Synth.

Vlns.

Synth.

St.

C. Guit.

8

8

El. B.

Synth.

Synth.

Vlns.

Synth.

St.

C. Guit.

Measure 8: El. B. plays a sequence of eighth and sixteenth notes. Synth. and St. have whole rests. Vlns. play a half note chord. Synth. and C. Guit. have whole rests.

Measure 9: El. B. continues the sequence. Synth. and St. have whole rests. Vlns. play a half note chord. Synth. and C. Guit. have whole rests.

El. B.

Synth.

Synth.

Vlns.

Synth.

St.

C. Guit.

8

12

El. B.

Synth.

Synth.

Vlns.

Synth.

St.

C. Guit.

8

El. B.

Synth.

Synth.

Vlns.

Synth.

St.

C. Guit.

The musical score for measures 14 and 15 is as follows:

- El. B. (Electric Bass):** Bass clef, four flats key signature. Measure 14: eighth notes G2, F2, E2, D2, C2, B1, A1, G1. Measure 15: eighth notes F1, E1, D1, C1, B0, A0, G0, F0.
- Synth. (Synthesizer 1):** Bass clef, four flats key signature. Measures 14 and 15: whole rests.
- Synth. (Synthesizer 2):** Bass clef, four flats key signature. Measures 14 and 15: whole rests.
- Vlns. (Violins):** Treble clef, four flats key signature. Measures 14 and 15: whole notes G4 and F4, respectively, with a slur and a fermata spanning both measures.
- Synth. (Synthesizer 3):** Treble clef, four flats key signature. Measures 14 and 15: whole rests.
- St. (Strings):** Treble clef, four flats key signature. Measures 14 and 15: whole rests.
- C. Guit. (Electric Guitar):** Treble clef, four flats key signature. Measures 14 and 15: whole rests.

16

El. B.

Synth.

Synth.

Vlns.

Synth.

St.

C. Guit.

8

18

El. B.

Synth.

Synth.

Vlns.

Synth.

St.

C. Guit.

8

20

El. B.

Synth.

Synth.

Vlns.

Synth.

St.

C. Guit.

8

El. B.

Synth.

Synth.

Vlns.

Synth.

St.

C. Guit.

8

24

El. B.

Synth.

Synth.

Vlns.

Synth.

St.

C. Guit.

8

El. B.

Synth.

Synth.

Vlns.

Synth.

St.

C. Guit.

The musical score for page 26, system 14, consists of six staves. The key signature is B-flat major (two flats). The El. B. staff features a continuous eighth-note pattern. The Synth. and Vlns. staves have rests. The St. staff has a long note with a slur. The C. Guit. staff has a rest.

28

El. B.

Synth.

Synth.

Vlns.

Synth.

St.

C. Guit.

The musical score for page 15, measure 28, is written for seven instruments. The key signature is B-flat major (two flats). The El. B. staff contains a complex rhythmic pattern of eighth and sixteenth notes. The Synth. and Vlns. staves have whole rests. The St. staff has a half note followed by a dotted half note. The C. Guit. staff has a whole rest.

30

El. B.

Synth.

Synth.

Vlns.

Synth.

St.

C. Guit.

The musical score for page 16, measure 30, consists of seven staves. The key signature is B-flat major (two flats). The El. B. staff features a complex rhythmic pattern of eighth and sixteenth notes. The Synth. staves have whole rests. The Vlns. staff has a whole rest. The Synth. staff has a whole rest. The St. staff has a melodic line with eighth and sixteenth notes. The C. Guit. staff has a whole rest.

32

El. B.

Synth.

Synth.

Vlns.

Synth.

St.

C. Guit.

8

33

El. B.

Synth.

Synth.

Vlns.

Synth.

St.

C. Guit.

The musical score for measures 33-36 is arranged in six staves. The first staff, labeled 'El. B.', contains a continuous eighth-note pattern in the bass clef. The second staff, labeled 'Synth.', features a melodic line in the bass clef with some treble clef notes. The third staff, also labeled 'Synth.', has a similar melodic line. The fourth staff, labeled 'Vlns.', is mostly silent with a few notes. The fifth staff, labeled 'Synth.', is also mostly silent. The sixth staff, labeled 'St.', is mostly silent. The seventh staff, labeled 'C. Guit.', has a single note at the bottom.

34

El. B.

Synth.

Synth.

Vlns.

Synth.

St.

C. Guit.

8

35

El. B.

Synth.

Synth.

Vlns.

Synth.

St.

C. Guit.

8

36

El. B.

Synth.

Synth.

Vlns.

Synth.

St.

C. Guit.

8

El. B.

Synth.

Synth.

Vlns.

Synth.

St.

C. Guit.

8

38

El. B.

Synth.

Synth.

Vlns.

Synth.

St.

C. Guit.

8

El. B.

Synth.

Synth.

Vlns.

Synth.

St.

C. Guit.

The musical score for page 39 consists of six staves. The key signature is three flats (B-flat, E-flat, A-flat). The El. B. staff has a rhythmic pattern of eighth notes. The Synth. staves have a melodic line with some rests. The Vlns., Synth., St., and C. Guit. staves are mostly empty with a few notes and rests.

40



El. B.

Synth.

Synth.

Vlns.

Synth.

St.

C. Guit.

8

Detailed description: This musical score page contains measures 40 and 41. The key signature has four flats (B-flat, E-flat, A-flat, D-flat). The score is arranged in six staves. The first staff, labeled 'El. B.', is in bass clef and contains a repeating eighth-note pattern with a slash at the start of each measure. The second staff, labeled 'Synth.', is in bass clef and contains a melodic line with eighth and quarter notes, including a triplet in measure 40. The third staff, also labeled 'Synth.', is in treble clef and contains a melodic line with eighth and quarter notes, including a triplet in measure 40. The fourth staff, labeled 'Vlns.', is in treble clef and contains a whole rest in measure 40. The fifth staff, labeled 'Synth.', is in treble clef and contains a whole rest in measure 40. The sixth staff, labeled 'St.', is in treble clef and contains a whole rest in measure 40. The seventh staff, labeled 'C. Guit.', is in treble clef and contains a whole rest in measure 40. A page number '40' is at the top left, and a page number '25' is at the top right. A small number '8' is at the bottom left of the guitar staff.

El. B.

Synth.

Synth.

Vlns.

Synth.

St.

C. Guit.

The musical score for page 41 consists of six staves. The key signature is three flats (B-flat, E-flat, A-flat). The El. B. staff features a repeating eighth-note pattern. The Synth. and Synth. staves have complex melodic lines with triplets. The Vlns. staff has a single note. The Synth., St., and C. Guit. staves have a single note.

42

El. B.

Synth.

Synth.

Vlns.

Synth.

St.

C. Guit.

The musical score for measures 42-43 is as follows:

- El. B. (Electric Bass):** Measures 42-43. Rhythmic pattern of eighth notes: G2, F2, E2, D2, C2, B1, A1, G1.
- Synth. (Synthesizer):** Measures 42-43. Melodic line: G2, F2, E2, D2, C2, B1, A1, G1.
- Synth. (Synthesizer):** Measures 42-43. Melodic line: G2, F2, E2, D2, C2, B1, A1, G1.
- Vlns. (Violins):** Measures 42-43. Sustained chord: G2, F2, E2, D2, C2, B1, A1, G1.
- Synth. (Synthesizer):** Measures 42-43. Sustained note: G2.
- St. (Strings):** Measures 42-43. Sustained note: G2.
- C. Guit. (Coustic Guitar):** Measures 42-43. Sustained note: G2.

El. B.

Synth.

Synth.

Vlns.

Synth.

St.

C. Guit.

8

44

El. B.

Synth.

Synth.

Vlns.

Synth.

St.

C. Guit.

8

El. B.

Synth.

Synth.

Vlns.

Synth.

St.

C. Guit.

8

46

El. B.

Synth.

Synth.

Vlns.

Synth.

St.

C. Guit.

8

El. B.

Synth.

Synth.

Vlns.

Synth.

St.

C. Guit.

8

48

El. B.

Synth.

Synth.

Vlins.

Synth.

St.

C. Guit.

50

El. B.

Synth.

Synth.

Vlns.

Synth.

St.

C. Guit.

8

53

El. B.

Synth.

Synth.

Vlns.

Synth.

St.

C. Guit.

8

5

El. B.

Synth.

Synth.

Vlns.

Synth.

St.

C. Guit.

8

|||

8

55

El. B.

Synth.

Synth.

Vlns.

Synth.

St.

C. Guit.

El. B.

Synth.

Synth.

Vlns.

Synth.

St.

C. Guit.

8

57

El. B.

Synth.

Synth.

Vlns.

Synth.

St.

C. Guit.

8

Detailed description: This musical score block contains measures 57 through 60. The staves are labeled El. B., Synth., Synth., Vlns., Synth., St., and C. Guit. The key signature is three flats (B-flat, E-flat, A-flat). The time signature is 4/4. The El. B. staff features a repeating eighth-note pattern. The Synth. staves have various melodic and harmonic lines, including some with triplets. The Vlns. staff has a single note in measure 57. The Synth., St., and C. Guit. staves have rests in measures 57 and 58, followed by a single note in measure 59. A small '8' is written below the C. Guit. staff in measure 57.

El. B.

Synth.

Synth.

Vlns.

Synth.

St.

C. Guit.

The musical score for page 58 consists of six staves. The key signature is three flats (B-flat, E-flat, A-flat). The El. B. staff features a repeating eighth-note pattern. The Synth. staves have various melodic lines. The Vlns. staff has a sustained chord. The Synth., St., and C. Guit. staves have sustained notes.

59

El. B.

Synth.

Synth.

Vlns.

Synth.

St.

C. Guit.

8

El. B.

Synth.

Synth.

Vlns.

Synth.

St.

C. Guit.

8

61

El. B.

Synth.

Synth.

Vlns.

Synth.

St.

C. Guit.

8

El. B.

Synth.

Synth.

Vlns.

Synth.

St.

C. Guit.

8

63

El. B.

Synth.

Synth.

Vlns.

Synth.

St.

C. Guit.

8

64

El. B.

Synth.

Synth.

Vlns.

Synth.

St.

C. Guit.

The musical score for measures 64-65 is written for six staves. The key signature is three flats (B-flat, E-flat, A-flat). The El. B. staff has a repeating eighth-note pattern. The Synth. and Synth. staves have a melodic line with a trill. The Vlns. staff has a sustained chord. The Synth., St., and C. Guit. staves have a sustained chord.

65

El. B.

Synth.

Synth.

Vlns.

Synth.

St.

C. Guit.

8

El. B.

Synth.

Synth.

Vlns.

Synth.

St.

C. Guit.

The musical score for page 66 consists of six staves. The key signature is three flats (B-flat, E-flat, A-flat). The El. B. staff features a repeating eighth-note pattern. The first Synth. staff has a melodic line with some triplets. The second Synth. staff has a similar melodic line. The Vlns. staff has a sustained chord. The third Synth. staff has a sustained chord with a tremolo effect. The St. and C. Guit. staves have sustained chords.

67

El. B.

Synth.

Synth.

Vlns.

Synth.

St.

C. Guit.

8

El. B.

Synth.

Synth.

Vlns.

Synth.

St.

C. Guit.

8

69

El. B.

Synth.

Synth.

Vlns.

Synth.

St.

C. Guit.

8

El. B.

Synth.

Synth.

Vlns.

Synth.

St.

C. Guit.

8

71

El. B.

Synth.

Synth.

Vlns.

Synth.

St.

C. Guit.

8

El. B.

Synth.

Synth.

Vlns.

Synth.

St.

C. Guit.

8